



Thank you for purchasing a Borla Performance Cat-Back™ Exhaust System.

Precision manufactured using aircraft quality T-304 stainless steel; this system is designed to endure years of heavy use. Installing a Borla Performance Exhaust System on your vehicle will eliminate the restrictive design of the stock exhaust, allowing your engine to discharge exhaust gas easier. The result is more horsepower and torque, longer engine life, and a distinctive throaty growl- all this, with easy bolt-on installation. These installation instructions have been written to help you in the installation of your Borla Performance™ Exhaust System. Please read it completely before installing your system.

These Borla Performance Cat-Back™ Exhaust Systems (Part numbers 14894/14917/14921/14926/14927/14994) have been designed for the 2000-2004 Chrysler PT Cruiser equipped with a 2.4L engine.

Borla Performance Industries recommends that an exhaust shop or professional after market parts installer, who has all the necessary equipment, tools and experienced personnel needed for proper installation, should perform the installation of this system. However, if you decide to perform the installation, we recommend someone should help you. Ensure the installer uses all under car safety precautions including eye protection.

Please take time to read and understand the following...

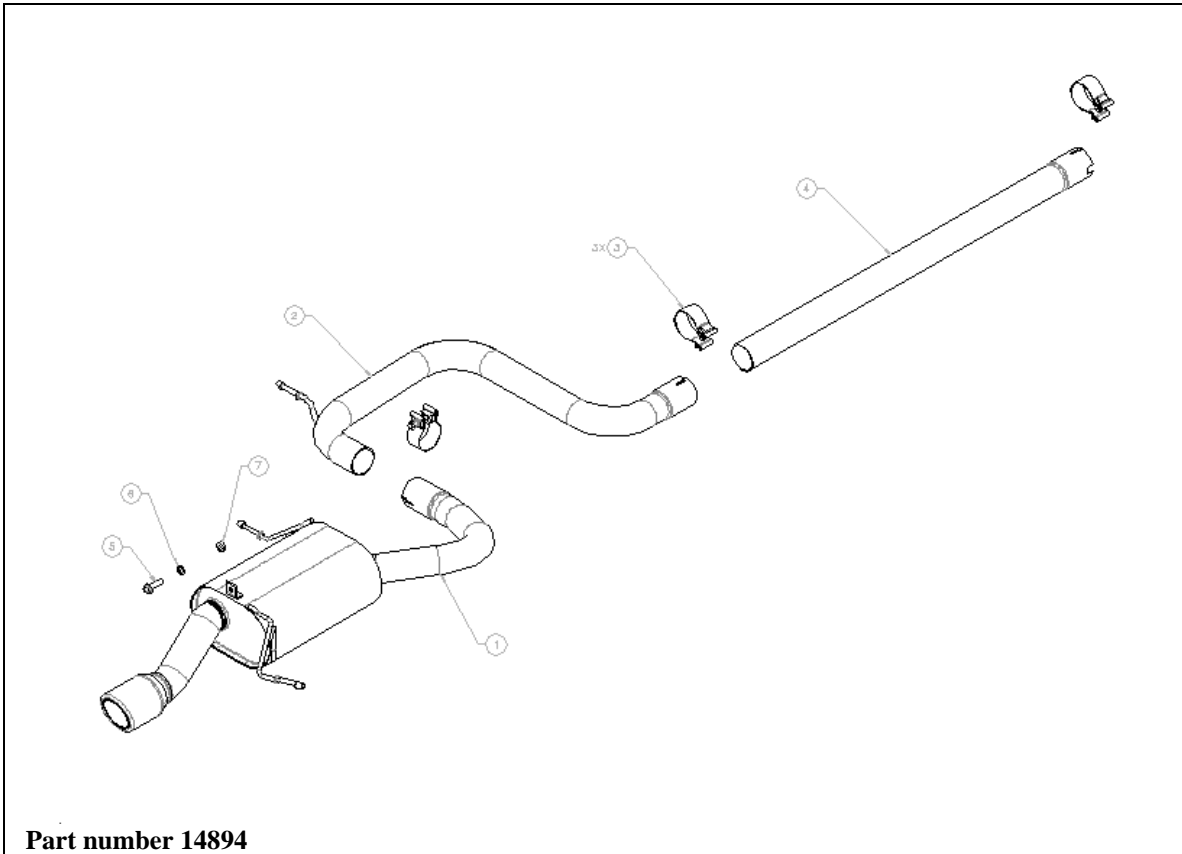
By installing your Borla Performance Exhaust System, you indicate that you have read this document and you agree with the terms stated below.

It is the responsibility of the purchaser to follow all installation instruction guidelines and safety procedures supplied with your Borla Performance Exhaust System

Borla Performance Industries assumes no responsibility for damages occurring from misuse, abuse, improper installation, improper operation, lack of responsible care, or all previously stated reasons resulting from incompatibility with other manufacturer's products and/or systems.

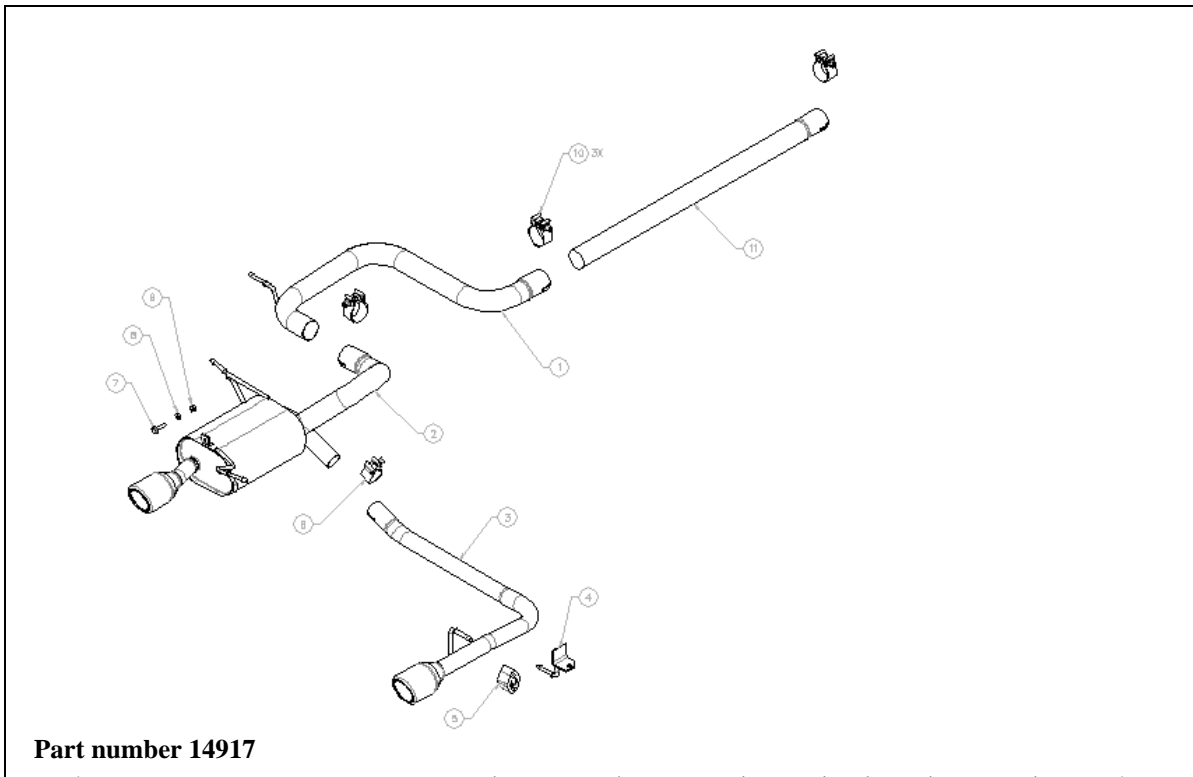
Included with your Borla Performance Exhaust System is a warranty card. Please read it carefully before you begin any work on your vehicle. If you should have any questions regarding our warranty policy, installation, or any other matter pertaining to your new Borla Performance Exhaust System, please give us a call at the number provided on the warranty card.

Borla Performance Cat-Back™ Bill of Materials

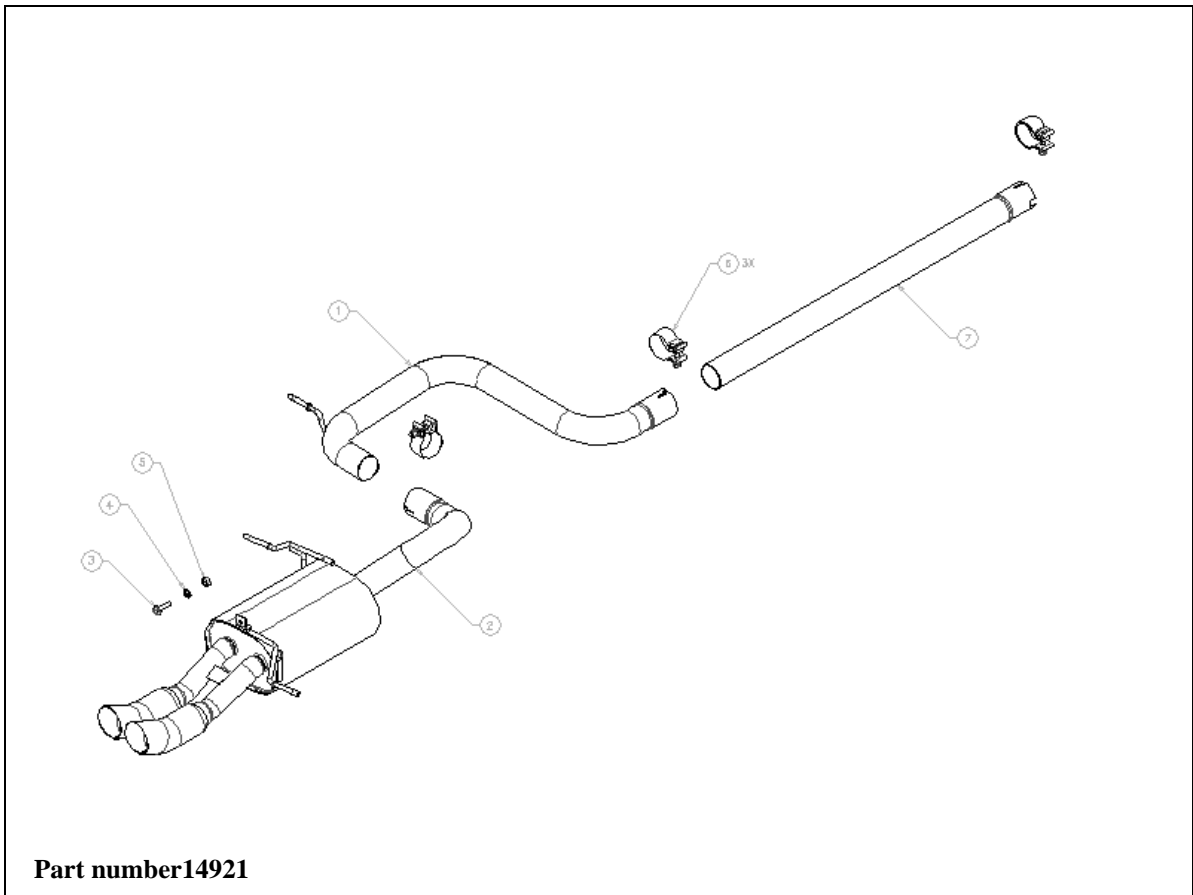


Part number 14894

1. Muffler assembly
2. Intermediate pipe assembly
3. 2.25" Accuseal™ clamp (qty 3)
4. Front pipe assembly
5. Hex head screw
6. Flat washer
7. Hex nut

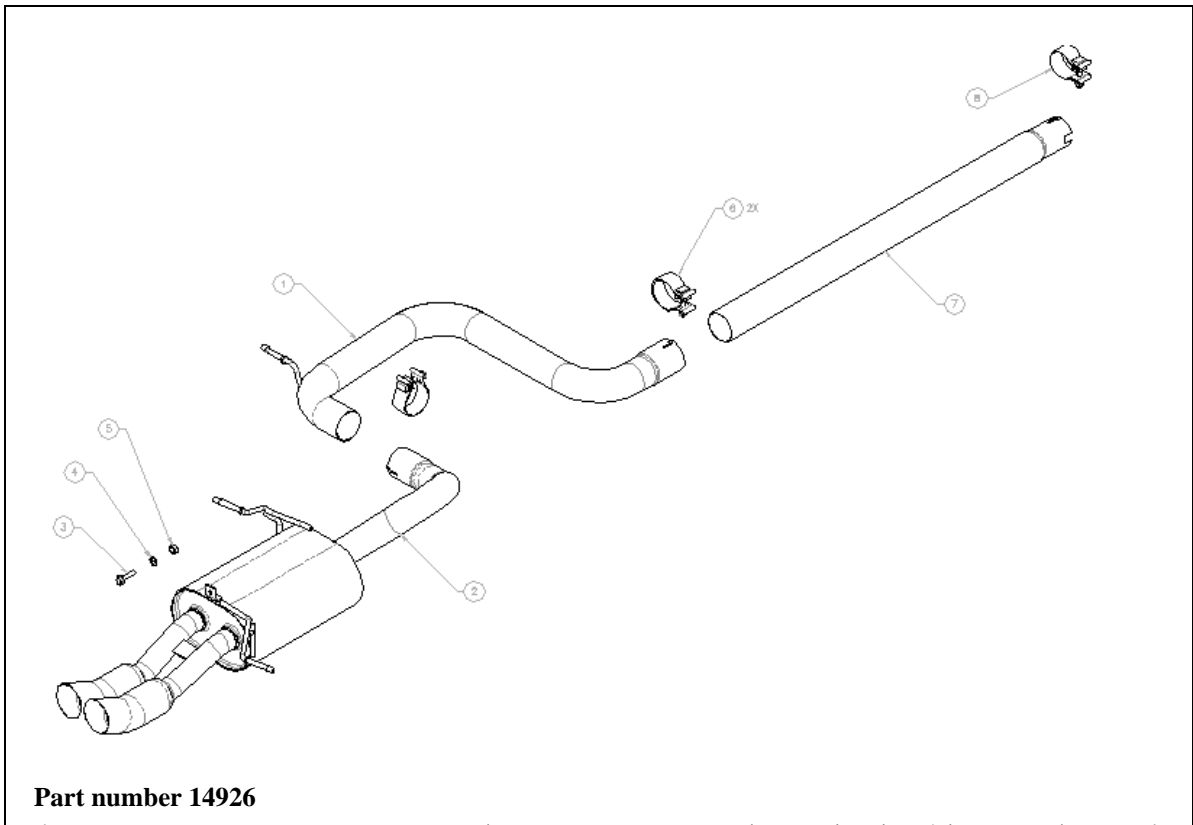


1. Intermediate pipe assembly
2. Muffler assembly
3. Tail pipe assembly
4. Hanger bracket assembly
5. Rubber mount
6. 1.75" Accuseal™ clamp
7. Hex head screw
8. Flat washer
9. Hex nut
10. 2.25" Accuseal™ clamp (qty 3)
11. Front pipe assembly

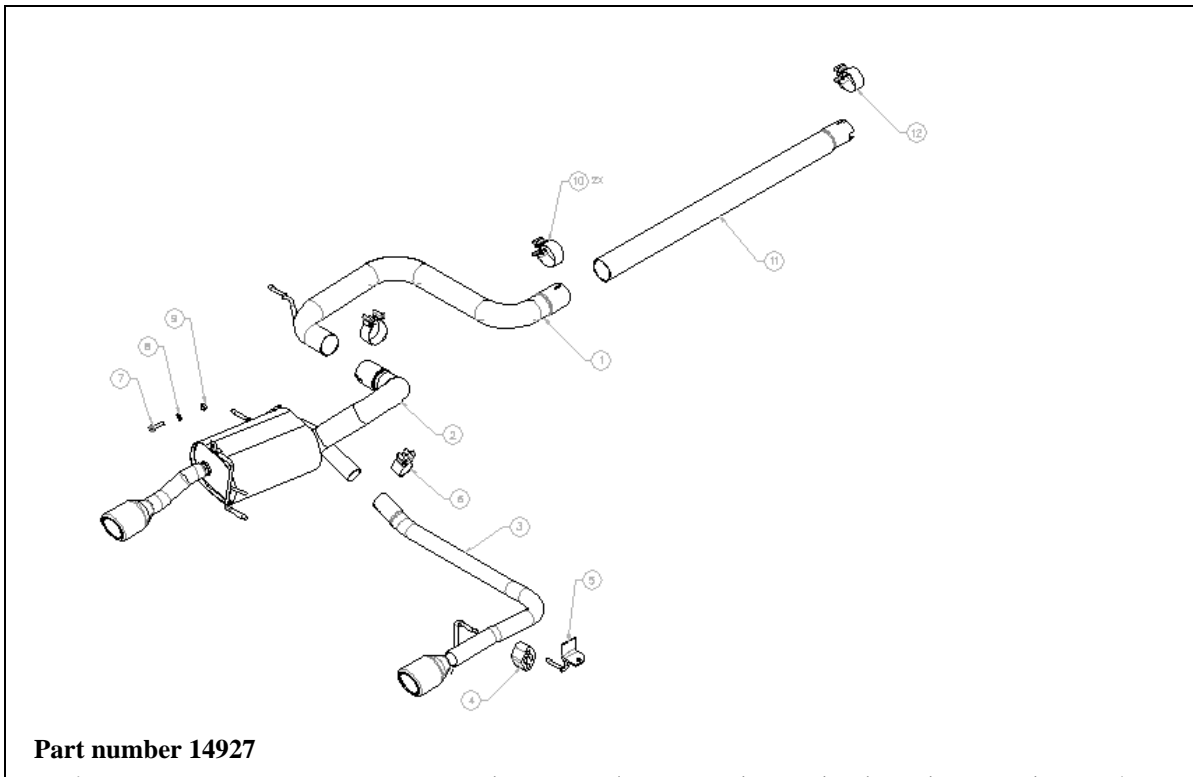


Part number 14921

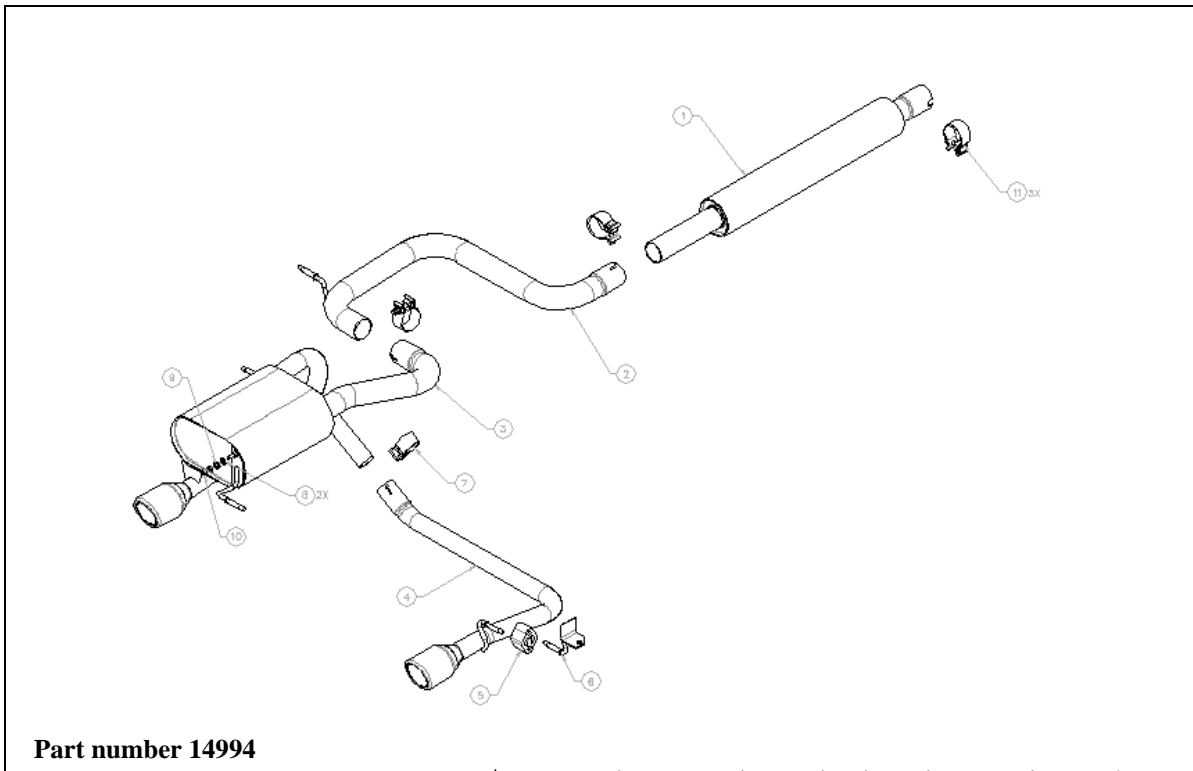
1. Intermediate pipe assembly
2. Muffler assembly
3. Hex head screw
4. Flat washer
5. Hex nut
6. 2.25" Accuseal™ clamp (qty 3)
7. Front pipe assembly



1. Intermediate pipe assembly
2. Muffler assembly
3. Hex head screw
4. Flat washer
5. Hex nut
6. 2.5" Accuseal™ clamp (qty 2)
7. Front pipe assembly
8. 2.25" Accuseal™ clamp



1. Intermediate pipe assembly
2. Muffer assembly
3. Tail pipe assembly
4. Rubber mount
5. Hanger/bracket assembly
6. 1.75" Accuseal™ clamp
7. Hex head screw
8. Flat washer
9. Hex nut
10. 2.50" Accuseal™ clamp (qty 2)
11. Front pipe assembly
12. 2.25" Accuseal™ clamp



1. Front pipe assembly
2. Intermediate pipe assembly
3. Muffler assembly
4. Tail pipe assembly
5. Rubber mount
6. Hanger/bracket assembly
7. 1.75" Accuseal™ clamp
8. Flat washer (qty 2)
9. Lock washer
10. Hex nut
11. 2.25" Accuseal™ clamp (qty 3)

Caution!!! Never work on a hot exhaust system. Serious injury in the form of burns can result If the vehicle has been in use and the exhaust system is hot, allow vehicle to cool for at least 1 hour. Always wear eye protection when working under any vehicle.

Note: It is our recommendation that you use a hoist or hydraulic lift to facilitate the installation of your new Borla Performance Cat-Back™ Exhaust System. Always wear eye protection when working under a vehicle.

Taking all under car safety precautions, lift the vehicle using a hoist or hydraulic lift. Once this has been done, you may begin the removal of your old exhaust system from your vehicle.

Note: Before removing the original exhaust system from your vehicle, please compare the parts you have received with the bill of materials provided on the previous page to assure that you have all the parts necessary for the installation of your new Borla Performance Cat-Back™ Exhaust System.

Original Exhaust System Removal

Note: With a used vehicle, we suggest a penetrating spray lubricant to be applied liberally to all exhaust fasteners and allowing a significant period of time for the chemical to lubricate the threads before attempting to disassemble.

1. Loosen the clamp located in front of the muffler/tail pipe assembly.
2. Unbolt and remove ground strap shown in figure one from the muffler/tail pipe assembly.
3. Lubricate all hangers and rubber brackets.
4. Using a muffler stand or an additional person to hold the muffler/tail pipe assembly in position, remove hangers from rubber brackets and then remove the muffler/tail pipe assembly shown in figure 2 from the vehicle.

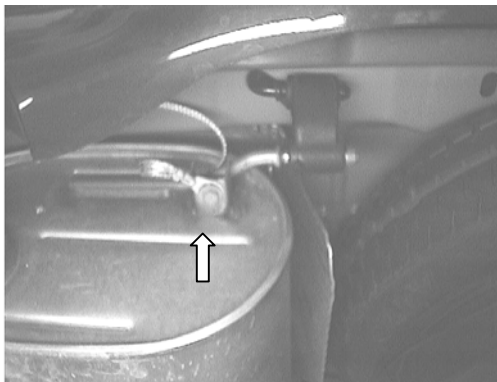


Figure 1

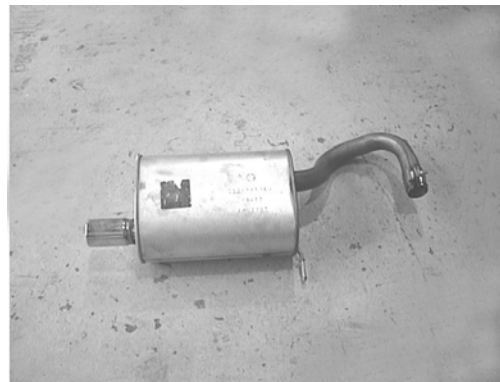


Figure 2

5. Loosen the clamp behind the catalytic converter.
6. Remove the hanger from the rubber bracket then remove the front pipe shown in figure 3 from the vehicle.



Figure 3

Borla Performance Cat-Back™ Exhaust System Installation

Warning: Use extreme caution during installation. Torque all fasteners according to manufacturer's torque values and tightening sequence. **DO NOT** use air impact tools to tighten fasteners on Borla Performance Exhaust Systems. Use of such tools may result in bent flanges or gasket contact areas leading to exhaust leaks. If any welding is performed, protect vehicle brake, fuel, vacuum or similar lines. Always check for any damage after welding has been done. Also check inside vehicle for damage to such items as carpet, inner liner, etc. Always have a class C fire extinguisher and a bucket of water available during any welding process.

1. Place a clamp over the expanded end of the front pipe assembly and push front pipe assembly into position as shown in figure 4. **DO NOT** tighten the clamp at this time. Support this section with a muffler stand or an additional person.
2. Place a clamp over the expanded end of the intermediate pipe assembly and place into position as shown in figure 5 installing the hanger into the rubber bracket.
3. Place a clamp over the expanded end of the muffler assembly and install into position. Insert the hangers into the rubber brackets located in front and rear of muffler. Attach ground strap with the supplied hardware.



Figure 4



Figure 5

4. For Cat-Back™ system part numbers 14917, 14927 and 14994, remove the front bolt holding the tow hook on passenger side under vehicle. Install the hanger/bracket assembly supplied with your system. Using the template supplied, mark and cut the rear valance.
5. For Cat-Back™ system part numbers 14917, 14927 and 14994, apply spray lubricant to rubber bracket and install onto hanger/bracket assembly.
6. For Cat-Back™ system part numbers 14917, 14927 and 14994, place a clamp over the expanded end of the tailpipe assembly and place into position. Insert hanger into rubber bracket previously installed.
7. For all Cat-Back™ systems, once position has been determined to be correct, tighten Accuseal™ clamps to 32-35 ft. lbs. from the rear of the vehicle to the front. Before starting your vehicle, make sure to check all wires, hoses, brake lines, body parts and tires for safe clearance from the exhaust system.
8. Start vehicle and check for any leaks. If any leaks are found, determine cause (such as loose or incorrectly positioned clamp) and repair as necessary.

Note: When you first start your vehicle after the installation of your new Borla Performance Exhaust System, there may be some smoke and fumes coming from the system. This is a protective oil based coating used in the manufacturing of mandrel bent performance exhaust tubing. This is not a problem and will disappear within a very short period of time after the exhaust has reached normal operating temperatures.



Congratulations!!! You have completed the installation of the world famous Borla Performance Stainless Steel Exhaust System.