



STEP 1 – PRIOR TO INSTALLATION

- A) Bushwacker only approves installing the flares according to these written instructions with the hardware provided. WARNING:** Failure to install according to these instructions will invalidate the warranty. This includes, but is not limited to using alternative installation methods, hardware, or materials. **DO NOT USE:** Loctite, SuperGlue, or similar products on the hardware or the flares.
- B) Fit:** Verify the fit of the flares to vehicle. (Some filing, sanding, or cutting may be necessary to ensure proper fit).
- C) Painting:** (Optional) if paint is desired it must be done prior to installing flares on vehicle. Clean outer surface with a good grade degreaser. **DO NOT USE LACQUER THINNER OR ENAMEL REDUCER AS A DEGREASER.** Wipe outer surface thoroughly with a tack rag prior to paint. Application of plastic adhesion promoter for ABS plastic as per your paint system manufacturer's recommendations is required. Paint flares using a high quality enamel, or polyurethane automotive paint. If painting edge trim (not recommended), use a flex additive.
- D) Performance:** Using larger Tires may increase the area required to turn the vehicle. Some Tire/Rim combinations may require lowering bump stops and or installing steering stops to prevent tire from contacting flare.
- E) Exhaust System:** Modifications may be necessary to maintain a minimum 4" clearance between flares and exhaust pipes. (Exhaust gases should not vent directly onto flares)
- F) Metal Protection:** All exposed fasteners and bare metal should be treated with rust resistant paint BEFORE installing flares. Spray inner fender wells with undercoating AFTER flare attachments have been completed.
- G) Decals:** Flares may interfere with existing decals on vehicle. If you wish, remove decals prior to installation of flares.

Jeep® Pocket Style® Extended Coverage Fender Flares Rear Pair

Rear Part #10046-02
Rev-10 10/24/2013

For complete fitment info visit : www.bushwacker.com

TOOLS FOR EASY INSTALLATION:

- Pry tool
- Flat Head Screwdriver
- Electric Drill
- 5/16" Drill Bit
- Soft Wiping Cloth
- Isopropyl Alcohol
- T45 Torx Bit
- #2 Phillips Screwdriver
- Masking Tape
- Vise Grips
- Awl

NOTE: These instructions involve cutting parts of the vehicle. It is important to read all instructions prior to cutting and installing of flares.

LIMITED LIFETIME WARRANTY AGAINST ANY MANUFACTURING DEFECTS

- To claim a warranty, you must provide Proof of Purchase.

Included in Hardware Kit:

- | | | | | | | | | | | | | | |
|----|--|----|---|-----|---|----|---|----|--|----|--|----|--|
| 1. | | 2. | | 3. | | 4. | | 5. | | 6. | | 7. | |
| | SW1-0041,
5/16 x 18 x 1"
SS Torx Screw,
16 pcs | | SW1-0057,
#14 x 3/4"
Phillips
Truss Tap Screw,
12 pcs | | NU1-0013,
#14 Black "U"
Spring Nut,
16 pcs | | NU1-0017,
5/16-18 "U" Nut,
16 pcs | | WA1-0012,
.320 x .700 x .03
SS Washer,
16 pcs | | RV1-P001,
1/4" Black Nylon
Retainer,
14 pcs | | RV1-P006,
8 x 20mm Black
Nylon Retainer,
22 pcs |
| 8. | | 9. | | 10. | | | | | | | | | |
| | GP1-0002,
Gimp Protector
Gasket Edge Trim,
140 inches | | GP1-0008,
Duro (NC02/S 70)
Edge Trim,
136 inches | | ET1-0002,
Edge Trim Tool,
1 pc | | | | | | | | |

STEP 2 - EDGE TRIM INSTALLATION

A. Peel two to three inches of red vinyl backing away from edge trim tape. Applying the adhesive side of the edge trim to the inner side of the outer flare, affix the edge trim to the top edge of the flare (the portion that comes in contact with the vehicle).

B. Press edge trim into place along the top edge of the flare in one-foot increments, pulling red vinyl backing free as you continue to work your way around the top edge of the flare.



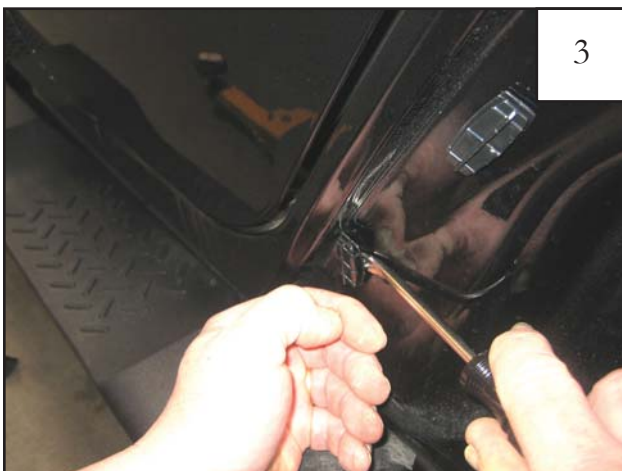
Rear Factory Flare Removal:



Using a pry tool, pliers, or flat head screwdriver, remove the six plastic fasteners from inside of splash shield.



Starting at front of flare, pull firmly to release flare and splash shield from fender, working your way to the back. You will hear popping noises as clips release. It is okay if clips break, they will be discarded.



Using a pry tool or flat head screwdriver, remove any plastic clips that have remained in fender.



Apply adhesive remover to the Cherokee emblem for ease of removal. Using a putty knife, carefully remove the Cherokee emblem, taking caution not to scratch the paint.

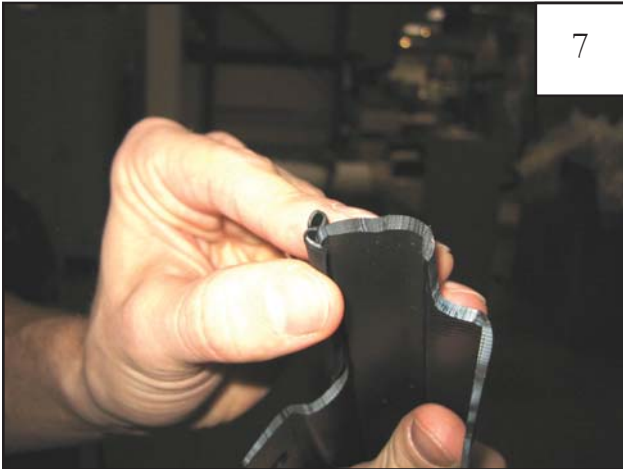
Rear Flare Installation (Driver's Side):



Clean fender area thoroughly with a soft clean cloth and isopropyl alcohol.



Make sure gimp and inner flare are clean. Peel 2" of liner from gimp (pin shape). Carefully position gimp as uniformly as possible along radius as shown, peeling liner as you go. Gimp can be repositioned as needed. NOTE: *It is better for gimp to be slightly below radius rather than above.*



When positioning gimp on narrow end of rear, fold flat edge of gimp over the edge of the part. (Gimp will continue over entire length of part.)



After gimp is properly placed, press to adhere properly and cut ends flush with ends of inner flare.



Position Inner Flare Piece on fender, aligning existing 5/16" holes in Inner Flare Piece with holes in fender. Install supplied Plastic Push Retainers (9 places).



Push Retainer locations.



11

Install supplied Threaded Clips, with the thread side in, over holes in Inner Flare Piece (8 places).



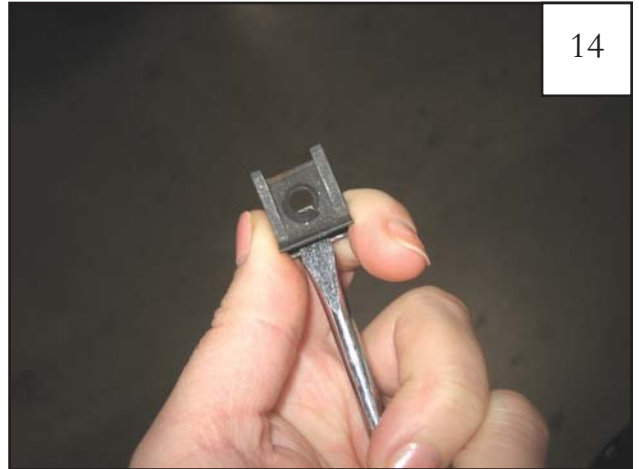
12

Threaded Clip locations.



13

On backside of splash shield, use a utility knife to trim two plastic ribs flush with splash shield surface.



14

Use a flat head screwdriver to spread supplied #14 U-Clips for ease of installation.



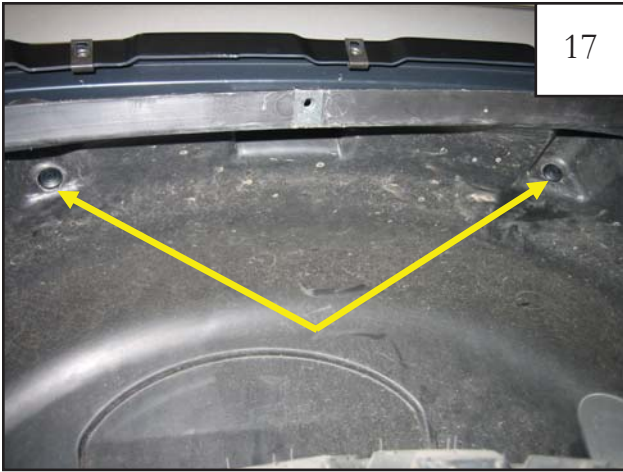
15

Install supplied #14 U-Clips over existing holes in splash shield (5 places). Flat side will be visible once splash shield is reinstalled.



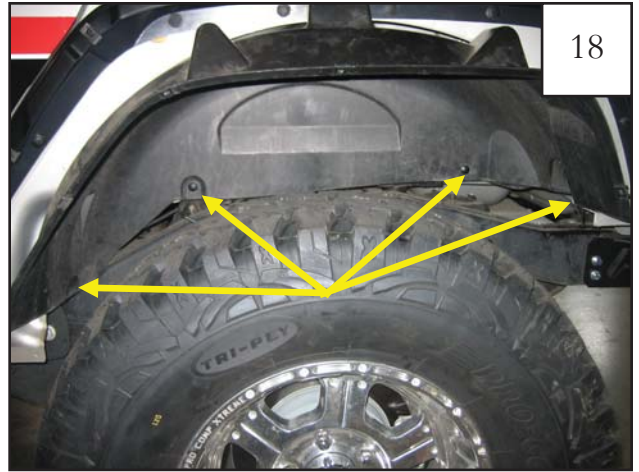
16

#14 U-Clip locations. NOTE: *The rearmost hole will NOT have a clip.*



17

Position splash shield in wheel well, and install two supplied Plastic Phillips Head Tuflocs in upper pockets using a pushing-twisting motion.



18

Install four supplied Plastic Phillips Head Tuflocs through splash shield and into vehicle body as shown.



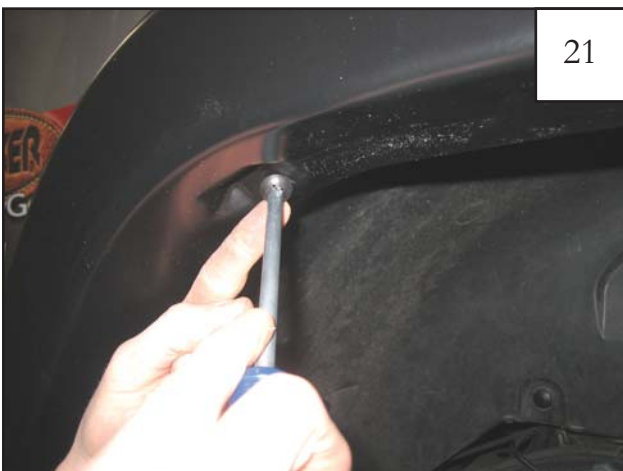
19

Position Rear Flare over Inner Flare Piece. Slide a supplied .700" Washer onto a supplied Torx Screw.



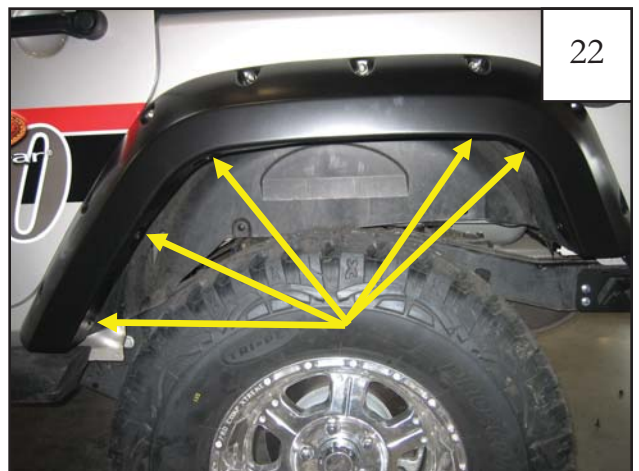
20

Start Screws/Washers through pocket holes in flare and into Threaded Clips installed in Step 11 (8 places) starting at the front and working your way to the back. Do not tighten.



21

Install supplied Truss Head Screws through holes in wheel well and into #14 U-Clips installed in Step 15 (5 places).



22

Truss Head Screw Locations.



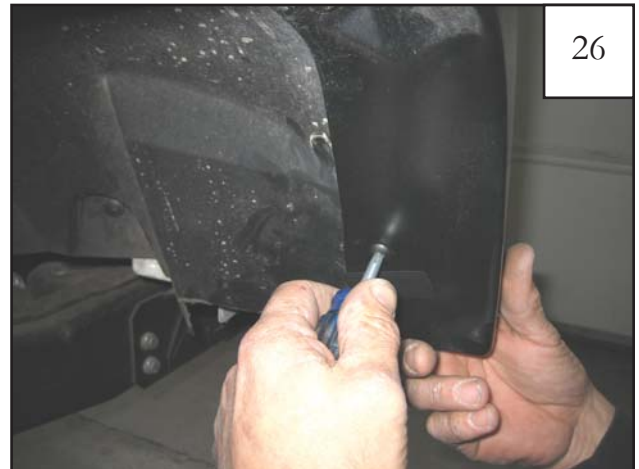
Holding the splash shield firmly, drill through rearmost hole in flare and through the splash shield using a 5/16" bit.



Remove three rearmost screws installed in Step 20.



Pull the splash shield out from behind flare and install a supplied #14 U-Clip over hole drilled in Step 23. This hole will be located slightly above existing hole in splash shield.

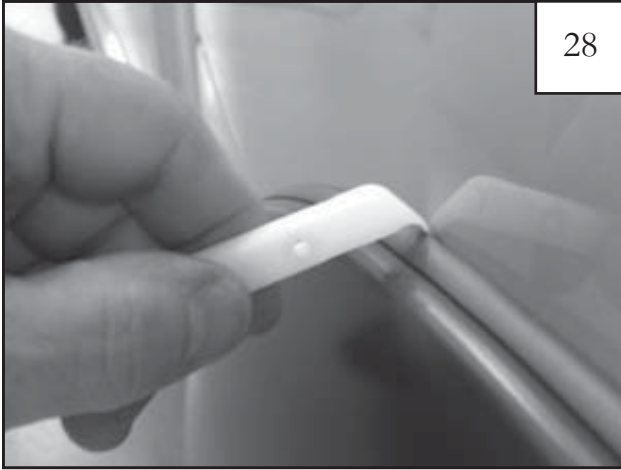


Replace splash shield, and install a supplied Truss Head Screw through rearmost hole in flare and into clip installed in Step 25. Reinstall three pocket screws removed in Step 24.



Ensure fit, and tighten all screws

Edge Trim Tool Procedures:



Using supplied Edge Trim Tool (ET1-0002), seat edge trim against vehicle by hooking curved end under edge trim at one end of flare. Next, slide around outer edge of flare to the other end.



Using supplied Edge Trim Tool (ET1-0002), seat edge trim against vehicle by hooking curved end under edge trim at one end of flare. Next, slide around outer edge of flare to the other end.