

Toyota Sequoia

For Use with Vehicles with Factory Mud
Flaps
Set Part # 30912
Rev- 1 01/06/10



Step 1:

Prior to Installation:

- A) Bushwacker only approves installing the flares according to these written instructions with the hardware provided. **WARNING:** Failure to install according to these instructions will invalidate the warranty. This includes, but is not limited to using alternative installation methods, hardware, or materials. **DO NOT USE:** Loctite, SuperGlue, or similar products on the hardware or the flares.
- B) **Fit:** Verify the fit of the flares to vehicle. **(Some filing, sanding, or cutting may be necessary to ensure proper fit).**
- C) **Painting:** (Optional) if paint is desired it must be done prior to installing flares on the vehicle clean outer surface with a good grade degreaser. **DO NOT USE LACQUER THINNER OR ENAMEL REDUCER AS A DEGREASER.** Wipe outer surface thoroughly with a tack rag prior to paint. Paint flares using a high quality enamel, or polyurethane automotive paint. (Application of a primer coat is optional) If painting edge trim (not recommended), use a flex additive.
- D) **Performance:** Using larger Tires may increase the area required to turn the vehicle. Some Tire/Rim combinations may require lowering bump stops and or installing steering stops to prevent tire from contacting flare.
- E) **Exhaust System:** Modifications may be necessary to maintain a minimum 4" clearance between flares and exhaust pipes. (Exhaust gases should not vent directly onto flares)
- F) **Metal Protection:** All exposed fasteners and bare metal should be treated with red oxide primer BEFORE installing flares. Spray inner fender wells with undercoating AFTER flare attachments have been completed.
- G) **Factory Part Removal:** Removal of factory running board may be necessary. Torque factory running board to 14 ft. lbs.

TOOLS FOR EASY INSTALLATION

- Socket Wrench
- 10mm Socket
- #2 Phillips Screwdriver
- Grease Pencil
- Awl (optional)

KIT COMPONENTS:

- 1 Set of Fender Flares
- 348" Edge Trim
- 18 Hex Bolts
- 12 Black Tabs
- 6 "S" Clips
- 6 Serrated-Flange Screws
- 4 Long "U" Clips
- 4 Pan Head Screws
- 8 Door Clips
- 8 Door Screws

FLARE INSTALLATION PROCEDURES

Step 2: Edge Trim Installation (See Illustration #1)

- A) Peel two to three inches of red vinyl backing away from edge trim tape. Applying the adhesive side of the edge trim to the inner side of the flare, affix the edge trim to the top edge of the flare (the portion that comes in contact with the vehicle). **See Illustration #1**
- B) Press edge trim into place along the top edge of the flare in one-foot increments, pulling red vinyl backing free as you continue to work your way around the top edge of the flare.



Illustration #1

Step 3: Front Flare Installation (See Photos #1 through #12)



1

Remove one factory screw located at rear of front wheel well. Discard.



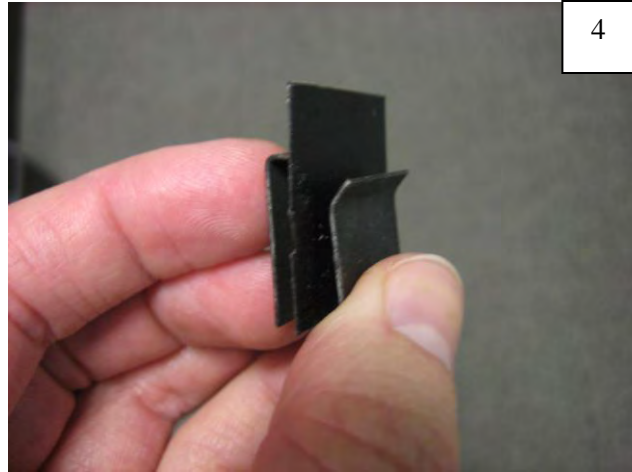
2

Use a trim tool or flathead screwdriver to remove two factory plastic fasteners located at front of front wheel well. Discard.



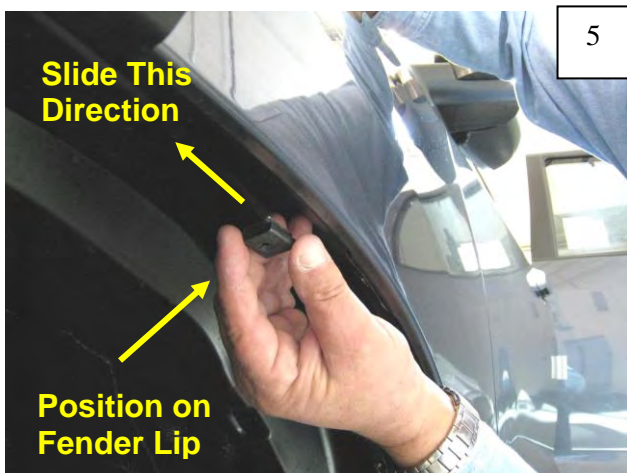
3

Remove one factory screw located at rear of mud flap area (under rocker). Discard.



4

Peel paper backing from supplied Black Tab. Adhere tab to supplied "S" Clip.



5

Position "S" Clip with Black Tab onto fender lip behind tab feature on fender, and slide forward until clip stops.



6

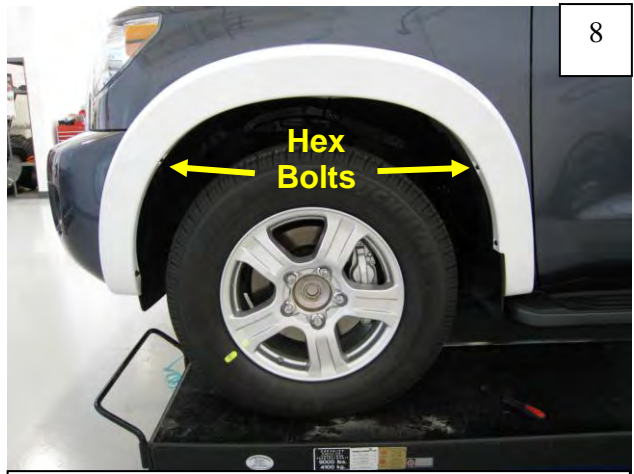
Position Front Flare on fender. Hand start supplied Hex Bolts through flare and into hole locations shown. Do not tighten.

7



Start a supplied Serrated Flange Screw through topmost hole in flare and into "S" Clip installed in Step 5. Do not tighten.

8



Hand start two supplied Hex Bolts through top rearward hole in flare and top forward hole in flare as shown. Do not tighten.

9



Slide an "S" Clip/Black Tab combination onto bumper lip, aligning with hole located at front underside of flare.

10



Start a supplied Serrated Flange Screw through flare and into "S" Clip installed in Step 9. Do not tighten.

11



Hand start a supplied Hex Bolt through hole located at rear underside of flare. Do not tighten.

12



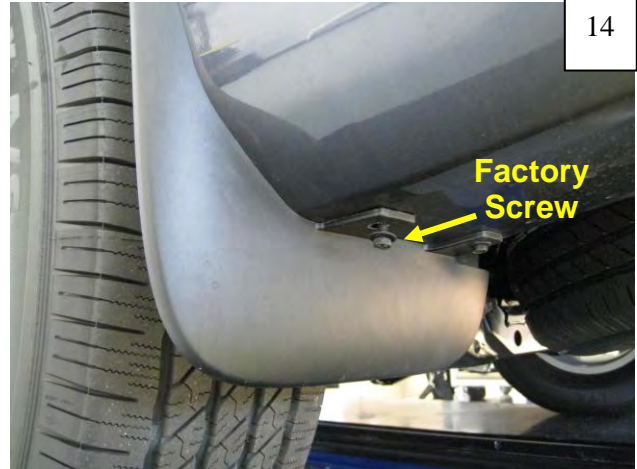
Starting at rearmost fastener, apply pressure towards vehicle at each fastening point as you tighten all screws (working your way to the front).

Step 4: Rear Main Flare Installation (See Photos #13 through #20)



13

Remove top three screws from rear of rear wheel well. Discard



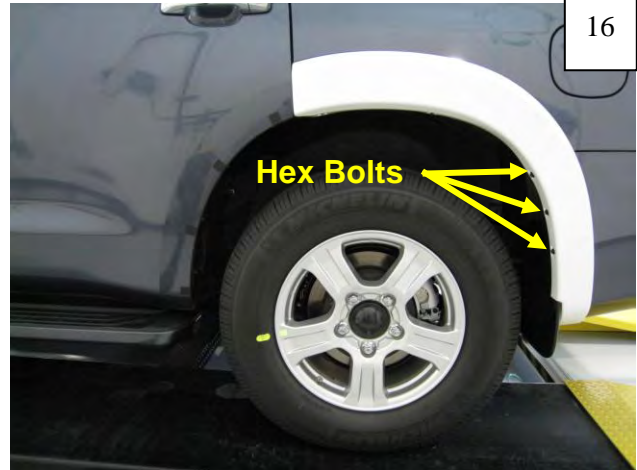
14

Remove screw from underside of mud flap. Discard.



15

Position Rear Main Flare on fender, aligning with edge of sheet metal along door, but not extending into the door seam.



16

Hand start three supplied hex bolts in rear of rear wheel well, starting with the top screw and working your way down. Do not tighten.



17

Hand start a supplied Hex bolt in underside of Rear Main Flare at mud flap area. Do not tighten.



18

Pull forward portion of flare out from fender gently, and slide two supplied Long Clips onto fender lip, aligning holes in clips with holes in flare.



19

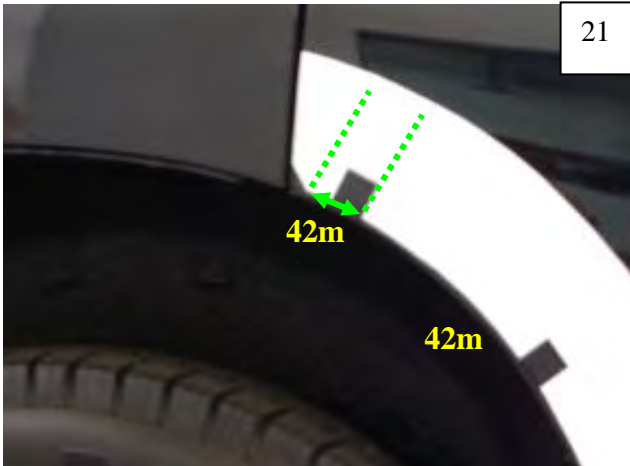
Start two supplied Pan Head Screws through holes in flare and into Long Clips. Do not tighten.



20

Starting at rearmost fastener, apply pressure towards vehicle at each fastening point as you tighten all screws (working your way to the front).

Step 4: Rear Door Piece Installation (See Photos #21 through #30)



21

Tab Placement: Measure 42mm from the edge of the door and make a mark on door edge using a grease pencil. This will be the centerline for the first Black Tab.



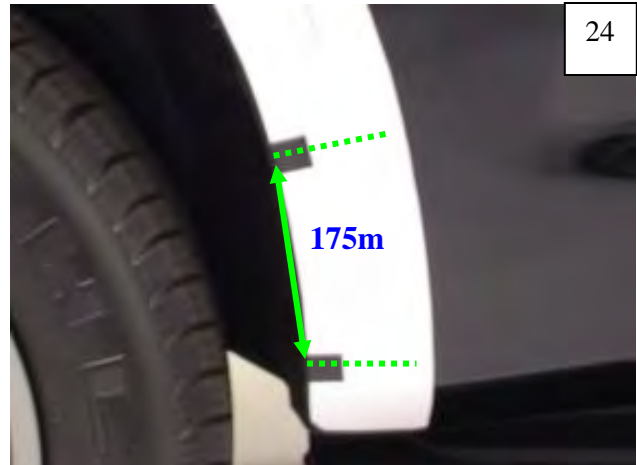
22

Measure 175mm from the centerline of the first tab, to mark the centerline of the second tab.



23

Measure 175mm from the centerline of the second tab, to mark the centerline of the third tab.



24

Measure 175mm from the centerline of the third tab, to mark the centerline of the fourth tab.



25

Center four supplied Black Tabs on marks made.



26

Open the door, and slide four supplied Door Clips over door lip, centering on Black Tabs.



27

Snap each clip shut once aligned.



28

Position Door Piece on fender, aligning with edge of sheet metal along door, but not extending into the door seam.



29

Start four supplied Door Screws. Do not tighten.



30

Once all screws have been started, apply pressure towards vehicle at each fastening point as you tighten all screws.