

Toyota Pocket Style® Fender Flares Front Pair

Front Part #31063-02

Rev-7 11/25/2013

For complete fitment info visit : www.bushwacker.com

STEP 1 – PRIOR TO INSTALLATION

- A) Bushwacker only** approves installing the flares according to these written instructions with the hardware provided. **WARNING:** Failure to install according to these instructions will invalidate the warranty. This includes, but is not limited to using alternative installation methods, hardware, or materials. **DO NOT USE:** Loctite, SuperGlue, or similar products on the hardware or the flares.
- B) Fit:** Verify the fit of the flares to vehicle. (Some filing, sanding, or cutting may be necessary to ensure proper fit).
- C) Painting:** (Optional) if paint is desired it must be done prior to installing flares on vehicle. Clean outer surface with a good grade degreaser. **DO NOT USE LACQUER THINNER OR ENAMEL REDUCER AS A DEGREASER.** Wipe outer surface thoroughly with a tack rag prior to paint. Application of plastic adhesion promoter for ABS plastic as per your paint system manufacturer's recommendations is required. Paint flares using a high quality enamel, or polyurethane automotive paint. If painting edge trim (not recommended), use a flex additive.
- D) Performance:** Using larger Tires may increase the area required to turn the vehicle. Some Tire/Rim combinations may require lowering bump stops and or installing steering stops to prevent tire from contacting flare.
- E) Exhaust System:** Modifications may be necessary to maintain a minimum 4" clearance between flares and exhaust pipes. (Exhaust gases should not vent directly onto flares)
- F) Metal Protection:** All exposed fasteners and bare metal should be treated with rust resistant paint **BEFORE** installing flares. Spray inner fender wells with undercoating **AFTER** flare attachments have been completed.
- G) Decals:** Flares may interfere with existing decals on vehicle. If you wish, remove decals prior to installation of flares.

TOOLS FOR EASY INSTALLATION:

- Utility Knife or Cutting Tool
- #2 Phillips Screwdriver
- Flat Head Screwdriver
- Socket Wrench
- 10mm Socket
- 1/2" Socket
- Electric Drill
- 5/16" Drill Bit
- Grease Pencil

LIMITED LIFETIME WARRANTY AGAINST ANY MANUFACTURING DEFECTS

- To claim a warranty, you must provide Proof of Purchase.

Included in Hardware Kit:

- | | | | | | | |
|--|---|---|---|---|---|---|
| 1. 
CL1-0022,
#10 "U" Clip,
4 pcs | 2. 
NU1-0001,
1/4-20 Zinc
Nut,
4 pcs | 3. 
SW1-0005,
1/4-20 x 3/4"
HxHd Slot Screw,
4 pcs | 4. 
SW1-0036,
M6-.3 x 20mm Hex
Magni Black Screw,
24 pcs | 5. 
SW1-0056,
#8 x 3/4"
PH Screw,
4 pcs | 6. 
WA1-0017,
1/4 x 1-1/4" Black
Fender Washer
8 pcs | 7. 
GR1-0002,
#14 Nut Plastic
Grommet,
2 pcs |
| 8. 
RV1-P003,
5/16" Nylon
Retainer,
4 pcs | 9. 
SW1-0067,
5/16 x 18 x 3/8"
SS Torx Screw,
33 pcs | 10. 
WA1-0012,
.320 x .700 x .03
SS Washer,
33 pcs | 11. 
NU1-0019,
5/16-18 Jam Fin.
Nylock Nut,
33 pcs | 12. 
SW1-0052,
T-45 Torx Bit,
1 pc | 13. 
GP1-0022,
Small Wiper Style
Edge Trim,
324 inches | 14. 
ET1-0002,
Edge Trim Tool,
1 pc |

STEP 2 - EDGE TRIM INSTALLATION

A. Peel two to three inches of red vinyl backing away from Edge Trim (GP1-0022) tape. Applying the adhesive side of the edge trim to the inner side of the flare, affix the edge trim to the top edge of the flare (the portion that comes in contact with the vehicle).

Press edge trim into place along the top edge of the flare in one-foot increments, pulling red vinyl backing free as you continue to work your way around the top edge of the flare.



Flare Pocket Hardware Installation:



Put a Washer (WA1-0012) on each Bolt (SW1-0059).

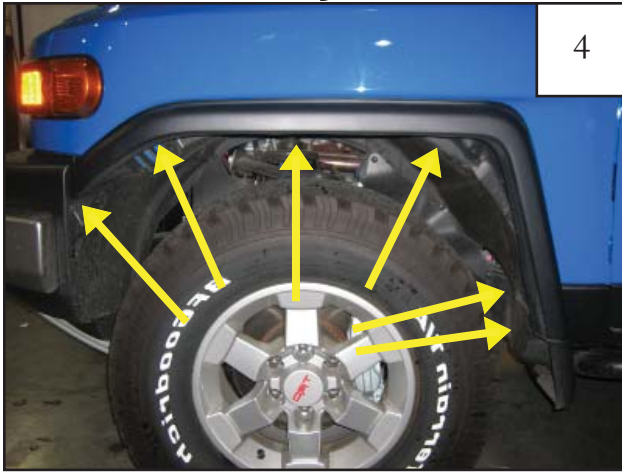


Put each Bolt/Washer combination through a pocket hole in the flare, Bolt head and Washer on the outside.



Place a Nut (NU1-0019) over the end of each Bolt and tighten, using a 1/2" wrench for the Nut and the supplied Torx Bit (SW1-0052) for the Bolt. Repeat for remaining pockets.

Front Factory Flare Removal (Driver's Side):



Remove six bolts from wheel well using a 10mm socket.



Remove two bolts connecting factory flare to rocker as shown (one plastic fastener removed in Step 4 is located here as well).



Remove three plastic fasteners using a flat head screw driver or pry tool.



Using a utility knife, cut along seam connecting factory flare to rocker. Cut down to mud flap area.



Using a utility knife, cut splash guard flush with edge of sheet metal also.



Trim an additional 3/4" from rocker, so that end of rocker is within confines of sheet metal. *NOTE: The Flare will cover this area to 1/4" from the door seam.*



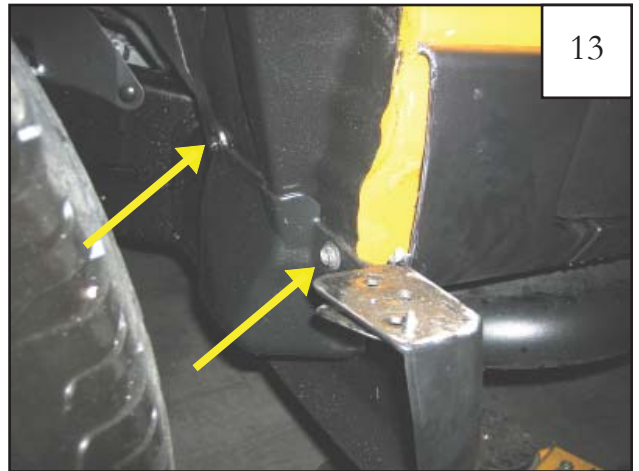
Cut front of factory flare along bumper, taking care not to cut bumper.



Trim remaining plastic flush with bumper.



Trim plastic tab along seam.



Remove mud flap bolts as shown (2 places).



Remove third mud flap bolt, and remove mud flap.

Front Flare Installation Procedures (Driver's Side):



15
Holding Front Inner Piece on front of wheel well next to bumper, use a grease pencil to mark two clip locations.



16
Remove Front Inner Piece, and drill two 5/16" holes on marks made in previous Step (2 places).



17
Slide supplied Clips (CL1-0022) over holes drilled in previous Step (2 places).



18
Position Inner Front Piece on vehicle, aligning holes in part with holes in Clips installed in previous Step. Install supplied Screws (SW1-0056).

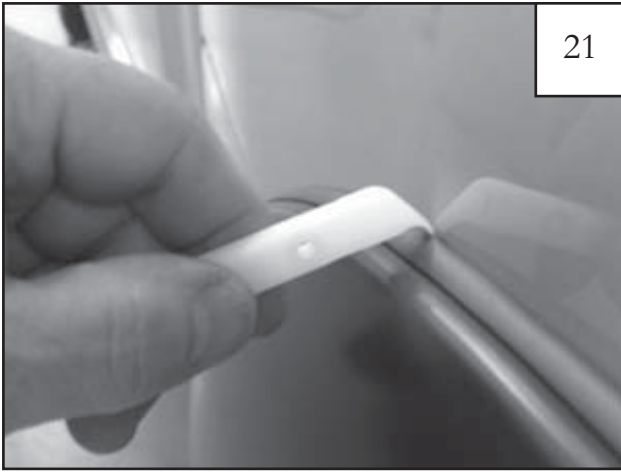


19
Position Flare on fender. Install five supplied Screws (SW1-0036). Do not tighten. *NOTE: It is helpful to install one of the top bolts first.*



20
Install one supplied Fastener (RV1-P003) in top hole. Check that Edge Trim (GP1-0001) is seated correctly, then tighten all Screws (SW1-0036) installed in previous Step..

Edge Trim Tool Procedures:



Using supplied Edge Trim Tool, seat edge trim against vehicle by hooking curved end under edge trim at one end of flare. Next, slide around outer edge of flare to the other end.



Using flat end of supplied Edge Trim Tool, seat edge trim against flare by inserting straight end between edge trim and flare at one end. Next, slide around entire edge to the other end.