

# Toyota "OE" Style® Fender Flares Rear Pair

Rear Part #31070-02

Rev-5 11/25/2013

For complete fitment info visit : [www.bushwacker.com](http://www.bushwacker.com)

## STEP 1 – PRIOR TO INSTALLATION

- A) Bushwacker only approves installing the flares according to these written instructions with the hardware provided. WARNING:** Failure to install according to these instructions will invalidate the warranty. This includes, but is not limited to using alternative installation methods, hardware, or materials. **DO NOT USE:** Loctite, SuperGlue, or similar products on the hardware or the flares.
- B) Fit:** Verify the fit of the flares to vehicle. (Some filing, sanding, or cutting may be necessary to ensure proper fit).
- C) Painting:** (Optional) if paint is desired it must be done prior to installing flares on vehicle. Clean outer surface with a good grade degreaser. **DO NOT USE LACQUER THINNER OR ENAMEL REDUCER AS A DEGREASER.** Wipe outer surface thoroughly with a tack rag prior to paint. Application of plastic adhesion promoter for ABS plastic as per your paint system manufacturer's recommendations is required. Paint flares using a high quality enamel, or polyurethane automotive paint. If painting edge trim (not recommended), use a flex additive.
- D) Performance:** Using larger Tires may increase the area required to turn the vehicle. Some Tire/Rim combinations may require lowering bump stops and or installing steering stops to prevent tire from contacting flare.
- E) Exhaust System:** Modifications may be necessary to maintain a minimum 4" clearance between flares and exhaust pipes. (Exhaust gases should not vent directly onto flares)
- F) Metal Protection:** All exposed fasteners and bare metal should be treated with rust resistant paint **BEFORE** installing flares. Spray inner fender wells with undercoating **AFTER** flare attachments have been completed.
- G) Decals:** Flares may interfere with existing decals on vehicle. If you wish, remove decals prior to installation of flares.

## TOOLS FOR EASY INSTALLATION:

- Utility Knife
- Grease Pencil
- #2 Phillips Screwdriver
- #2 Phillips Bit
- Small Ratchet
- Vise Grips
- Soft Wiping Cloth
- Safety Glasses
- Partner or Clamp (Step 16)

## LIMITED LIFETIME WARRANTY AGAINST ANY MANUFACTURING DEFECTS

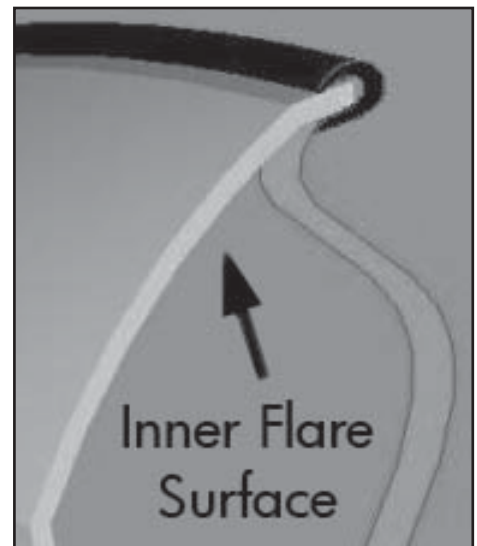
- To claim a warranty, you must provide Proof of Purchase.

## Included in Hardware Kit:

- |    |   |    |   |    |   |    |   |    |  |    |   |    |   |
|----|---|----|---|----|---|----|---|----|--|----|---|----|---|
| 1. |  | 2. |  | 3. |  | 4. |  | 5. |  | 6. |  | 7. |  |
|    | CL1-0005,<br>Dacromet "U"<br>Spring Clip,<br>8 pcs                                  |    | CL1-0020,<br>Low Profile Door<br>Snap Clip,<br>8 pcs                                |    | CL1-0021,<br>Low Profile<br>Door Clip Barb,<br>8 pcs                                |    | MT1-0014,<br>1" x1.5" x.01"<br>Black Tab,<br>16 pcs                                 |    | SW1-0050,<br>10 x 5/16 Phillips<br>Truss Screw,<br>16 pcs                            |    | GP1-0022,<br>Small Wiper Style<br>Edge Trim,<br>156 inches                            |    | ET1-0002,<br>Edge Trim Tool,<br>1 pc  |

## STEP 2 - EDGE TRIM INSTALLATION

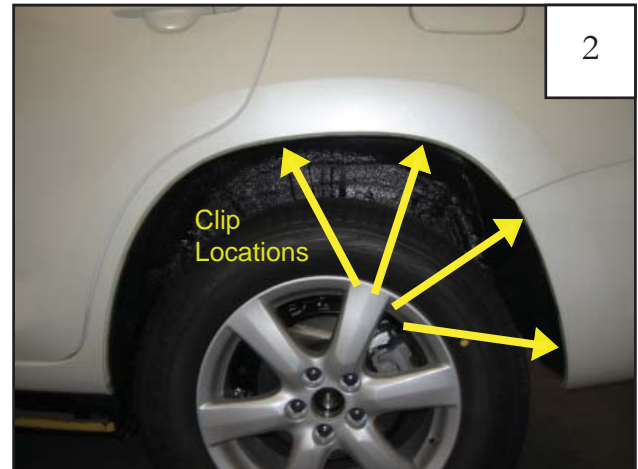
- Peel two to three inches of red vinyl backing away from Edge Trim (GP1-0022) tape. Applying the adhesive side of the edge trim to the inner side of the flare, affix the edge trim to the top edge of the flare (the portion that comes in contact with the vehicle).
- Press edge trim into place along the top edge of the flare in one-foot increments, pulling red vinyl backing free as you continue to work your way around the top edge of the flare.



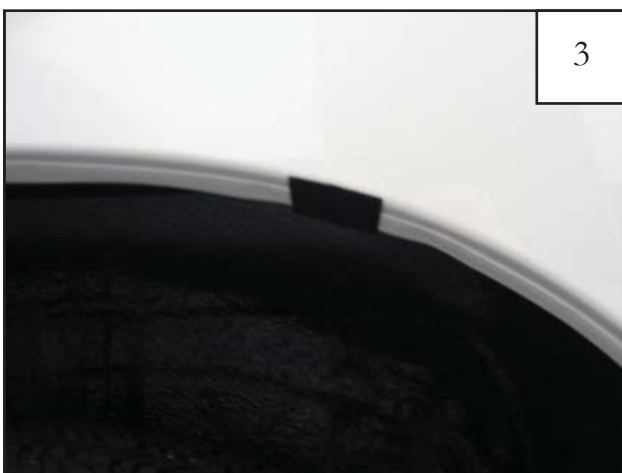
## Rear Main Flare Installation Procedures (Driver's Side):



Hold the flare firmly on the fender. Using holes in flare as a guide, mark four clip locations with a grease pencil.



Clip locations.



Remove flare from fender. Center a supplied black tab over each mark made in step 1.



Slide a supplied "S" clip over each tab installed in step 3.

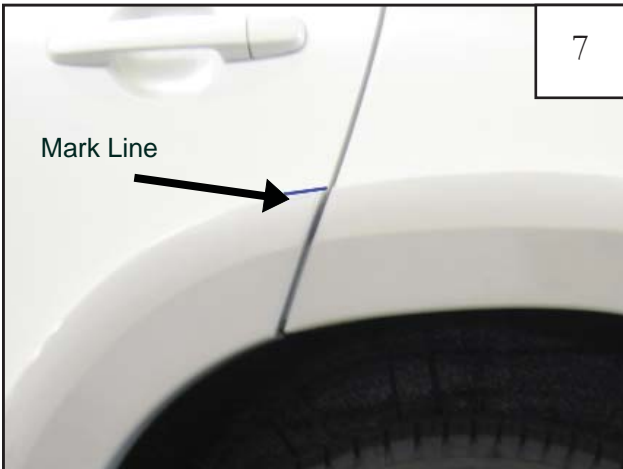


Replace flare on fender, aligning holes with holes in clips.



Start supplied serrated-flange screws through holes in flare and into the "S" clips installed in step 4. *Note: Do not tighten screws until door piece is installed.*

## Rear Door Piece Installation Procedures (Driver's Side):



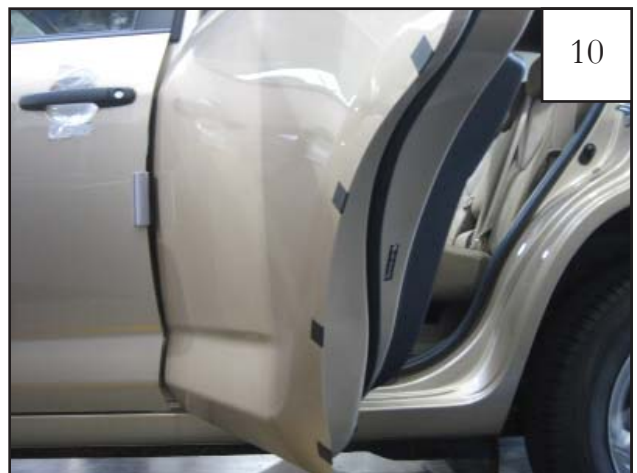
Hold the door piece firmly on the rear door. Align the top of the door piece with the top of the rear main flare and mark along the top of the door piece with a grease pencil.



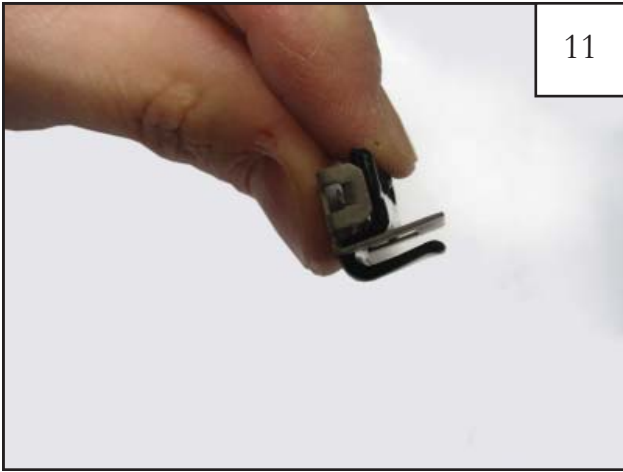
Open rear door. Make sure door piece aligns with the mark made in step 7. Using holes in door piece as a guide, mark four clip locations with a grease pencil.



Clip locations.



Remove door piece from door. Center a supplied black tab over each mark made in step 8.



11

Assemble the door clip.



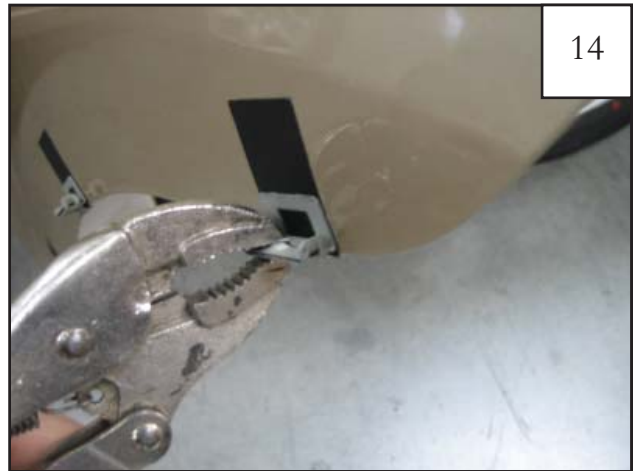
12

Install the clip over the black tabs installed in step 10.



13

Press clip into place.



14

Use vice grips to secure the clip to the sheet metal.



15

Hand start serrated-flange screws through each clip. The end of the shaft should be flush with the uppermost edge of the clip.



16

Using either a clamp or a partner, hold door piece in place so that the plastic is fully set in the clip. Starting in the two center locations, tighten screws started in step 15.



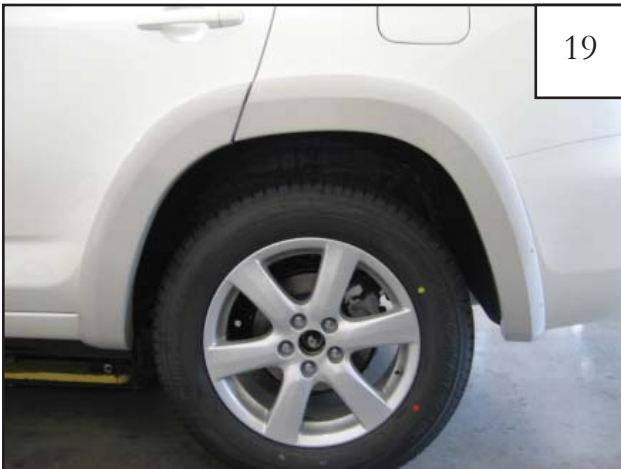
17

Once center two screws are installed, tighten the uppermost and lowermost screws. *Note: The pressure applied by the clamp or partner may have to be moved from the center so that the plastic is fully set in the clip for the uppermost and lowermost clip locations.*



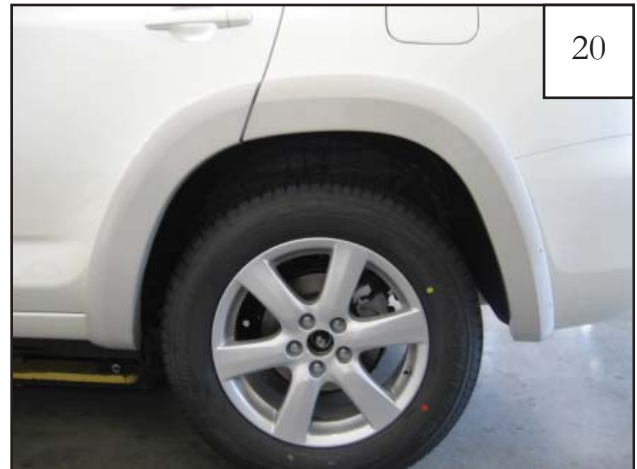
18

Tighten screws using a #2 Phillips bit and small ratchet.



19

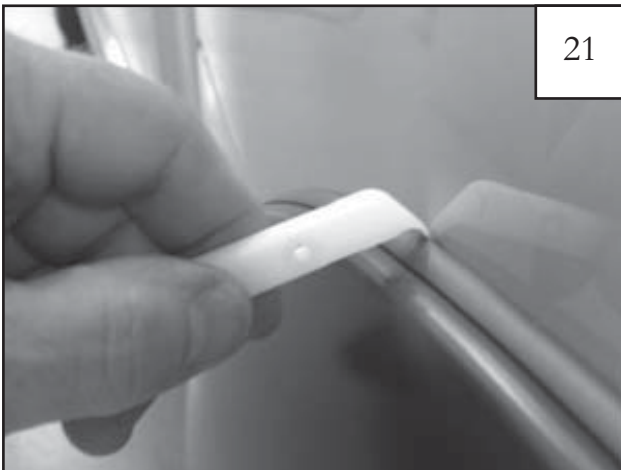
Close vehicle door and check alignment of door piece to rear main flare.



20

Adjust rear main flare for proper alignment. Once satisfied, tighten all rear main flare screws using a right angle #2 Phillips stubby screwdriver

## Edge Trim Tool Procedures:



21

Using supplied Edge Trim Tool (ET1-0002), seat edge trim against vehicle by hooking curved end under edge trim at one end of flare. Next, slide around outer edge of flare to the other end.



22

Using flat end of supplied Edge Trim Tool (ET1-0002), seat edge trim against flare by inserting straight end between edge trim and flare at one end. Next, slide around entire edge to the other end.