



## STEP 1 – PRIOR TO INSTALLATION

- A) Bushwacker only** approves installing the flares according to these written instructions with the hardware provided. **WARNING:** Failure to install according to these instructions will invalidate the warranty. This includes, but is not limited to using alternative installation methods, hardware, or materials. **DO NOT USE:** Loctite, SuperGlue, or similar products on the hardware or the flares.
- B) Fit:** Verify the fit of the flares to vehicle. (Some filing, sanding, or cutting may be necessary to ensure proper fit).
- C) Painting:** (Optional) if paint is desired it must be done prior to installing flares on vehicle. Clean outer surface with a good grade degreaser. **DO NOT USE LACQUER THINNER OR ENAMEL REDUCER AS A DEGREASER.** Wipe outer surface thoroughly with a tack rag prior to paint. Application of plastic adhesion promoter for ABS plastic as per your paint system manufacturer's recommendations is required. Paint flares using a high quality enamel, or polyurethane automotive paint. If painting edge trim (not recommended), use a flex additive.
- D) Performance:** Using larger Tires may increase the area required to turn the vehicle. Some Tire/Rim combinations may require lowering bump stops and or installing steering stops to prevent tire from contacting flare.
- E) Exhaust System:** Modifications may be necessary to maintain a minimum 4" clearance between flares and exhaust pipes. (Exhaust gases should not vent directly onto flares)
- F) Metal Protection:** All exposed fasteners and bare metal should be treated with rust resistant paint **BEFORE** installing flares. Spray inner fender wells with undercoating **AFTER** flare attachments have been completed.
- G) Decals:** Flares may interfere with existing decals on vehicle. If you wish, remove decals prior to installation of flares.

## Chevrolet Extend-A-Fender® Fender Flares Rear Pair

Set Part #40128-02

Rev-0 12/9/2013

For complete fitment info visit : [www.bushwacker.com](http://www.bushwacker.com)



### TOOLS FOR EASY INSTALLATION:

- Socket Wrench
- T-15 Torx Bit
- Electric Drill
- 3/32" Drill Bit
- #2 Phillips Screwdriver
- Grease Pencil
- Measuring Tape / Ruler
- Pry Tool
- Awl (Optional)
- Right Angle Ratchet (Optional)

### LIMITED LIFETIME WARRANTY AGAINST ANY MANUFACTURING DEFECTS

- To claim a warranty, you must provide Proof of Purchase.

## Included in Hardware Kit:

- |    |   |    |   |    |   |    |   |
|----|---|----|---|----|---|----|---|
| 1. |  | 2. |  | 3. |  | 4. |  |
|    | SW1-0066,<br>#8 x 5/8" Phillips<br>PH Drill Screw,<br>10 pcs                        |    | SW1-0056,<br>#8 x 3/4"<br>PH Screw,<br>4 pcs  |    | ET1-0002,<br>Edge Trim Tool,<br>1 pc  |    | GP1-0007,<br>Med. Wiper Style<br>Edge Trim,<br>192 inches                           |

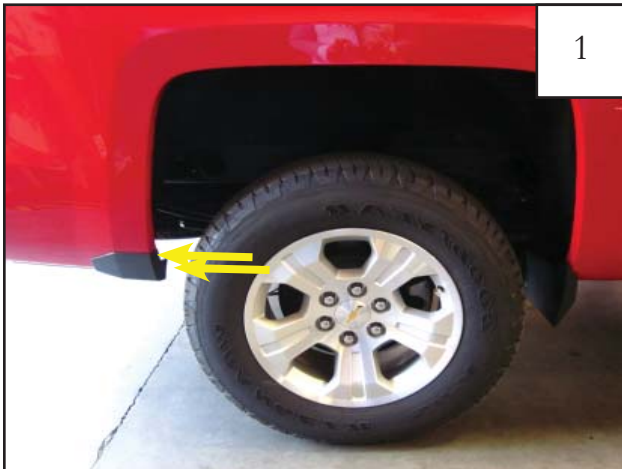
## STEP 2 - EDGE TRIM INSTALLATION

A. Applying the adhesive side of the edge trim (GP1-0007) to the inner side of the flare, affix the edge trim to the top edge of the flare (the portion that comes in contact with the vehicle).

B. Press edge trim into place along the top edge of the flare in one-inch increments.



## Rear Flare Installation Procedures (Passenger's Side):



Using a T-15 Torx bit socket wrench, remove factory installed screws from factory rear mudguard. Discard screws.



Using a pry tool, remove factory retainers in bottom of factory rear mudguard. Remove mudguard and discard.



Using a T-15 Torx bit socket wrench, remove the four factory screws from the factory forward splash guard. Remove splash guard and discard.



Re-install two factory screws into wheel well liner.



5

Hold flare firmly in place on fender. Start supplied screw (SW1-0056) at bottom most screw locations (shown). **DO NOT TIGHTEN.**



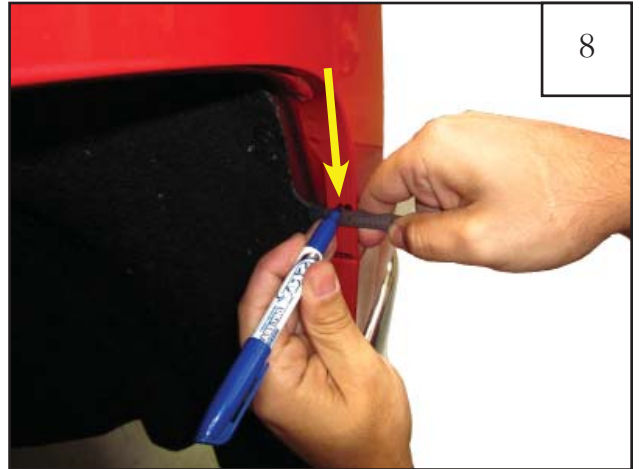
6

Using a grease pencil, mark five locations using the holes in the flare as a guide.



7

Five hole locations to be marked.



8

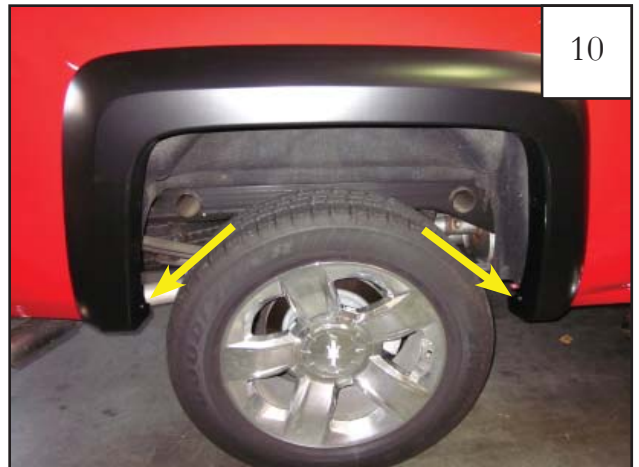
Remove the flare. At the marked locations made in Step 6, measure inward 22mm from the edge of the fender and mark with grease pencil or marker. These are the marks to be drilled.

*Note: Marks at 22mm may be on either side of the first mark.*



9

Using a 3/32" drill bit, drill pilot holes at the marks made in Step 8.



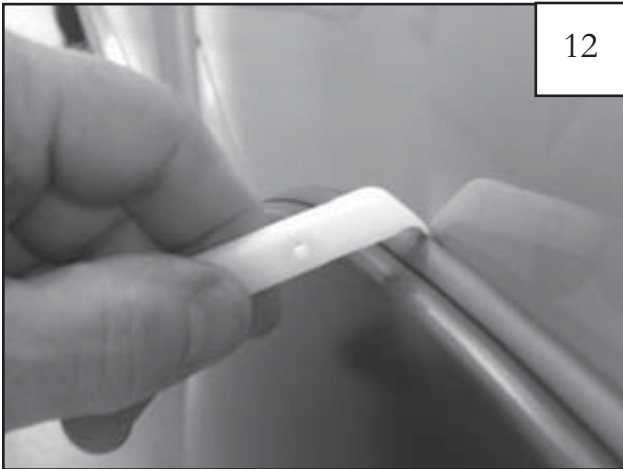
10

Re-install supplied screws (SW1-0056) into two lower most holes.



Install supplied self-tapping screws (SW1-0066) into pilot holes in the order indicated. *PRESS FLARE TOWARD VEHICLE AND TIGHTEN ALL SCREWS*

## Edge Trim Tool Procedures:



Using supplied Edge Trim Tool (ET1-0002), seat edge trim against vehicle by hooking curved end under edge trim at one end of flare. Next, slide around outer edge of flare to the other end.



Using flat end of supplied Edge Trim Tool (ET1-0002), seat edge trim against flare by inserting straight end between edge trim and flare at one end. Next, slide around entire edge to the other end.