

## STEP 1 – PRIOR TO INSTALLATION

- A) Bushwacker only** approves installing the flares according to these written instructions with the hardware provided. **WARNING:** Failure to install according to these instructions will invalidate the warranty. This includes, but is not limited to using alternative installation methods, hardware, or materials. **DO NOT USE:** Loctite, SuperGlue, or similar products on the hardware or the flares.
- B) Fit:** Verify the fit of the flares to vehicle. (Some filing, sanding, or cutting may be necessary to ensure proper fit).
- C) Painting:** (Optional) if paint is desired it must be done prior to installing flares on vehicle. Clean outer surface with a good grade degreaser. **DO NOT USE LACQUER THINNER OR ENAMEL REDUCER AS A DEGREASER.** Wipe outer surface thoroughly with a tack rag prior to paint. Application of plastic adhesion promoter for ABS plastic as per your paint system manufacturer's recommendations is required. Paint flares using a high quality enamel, or polyurethane automotive paint. If painting edge trim (not recommended), use a flex additive.
- D) Performance:** Using larger Tires may increase the area required to turn the vehicle. Some Tire/Rim combinations may require lowering bump stops and or installing steering stops to prevent tire from contacting flare.
- E) Exhaust System:** Modifications may be necessary to maintain a minimum 4" clearance between flares and exhaust pipes. (Exhaust gases should not vent directly onto flares)
- F) Metal Protection:** All exposed fasteners and bare metal should be treated with rust resistant paint **BEFORE** installing flares. Spray inner fender wells with undercoating **AFTER** flare attachments have been completed.
- G) Decals:** Flares may interfere with existing decals on vehicle. If you wish, remove decals prior to installation of flares.

## RAM "OE" Style® Fender Flares Set of 4

Set Part #50916-02

Rev-6 11/1/2013

For complete fitment info visit : [www.bushwacker.com](http://www.bushwacker.com)

### TOOLS FOR EASY INSTALLATION:

- Utility Knife
- #2 Phillips Driver
- Socket Wrench
- 8mm Socket
- 3/8" Wrench
- Awl

### LIMITED LIFETIME WARRANTY AGAINST ANY MANUFACTURING DEFECTS

- To claim a warranty, you must provide Proof of Purchase.

## Included in Hardware Kit:

- |    |   |    |   |    |   |    |   |    |  |    |   |    |   |
|----|---|----|---|----|---|----|---|----|--|----|---|----|---|
| 1. |  | 2. |  | 3. |  | 4. |  | 5. |  | 6. |  | 7. |  |
|    | CL1-0022,<br>#10 "U" Clip,  |    | ET1-0002,<br>Edge Trim Tool,  |    | GP1-0005,<br>Large Wiper Style<br>Edge Trim,  |    | NU1-0004,<br>10-24 Nylock Nut,  |    | SP1-0002,<br>1/2" x .260" x 1/8"<br>Nylon Spacer,                                    |    | SW1-0056,<br>#8 x 3/4"<br>PH Screw,   |    | SW1-0003,<br>10-24 x 3/4"<br>Phillips PH Screw,                                       |
|    | 8 pcs   |    | 1 pc  |    | 170 inches  |    | 2 pcs   |    | 2 pcs  |    | 28 pcs  |    | 2 pcs   |

## STEP 2 - EDGE TRIM INSTALLATION

- Peel two to three inches of red vinyl backing away from Edge Trim (GP1-0005) tape. Applying the adhesive side of the edge trim to the inner side of the flare, affix the edge trim to the top edge of the flare (the portion that comes in contact with the vehicle).
- Press edge trim into place along the top edge of the flare in one-foot increments, pulling red vinyl backing free as you continue to work your way around the top edge of the flare.



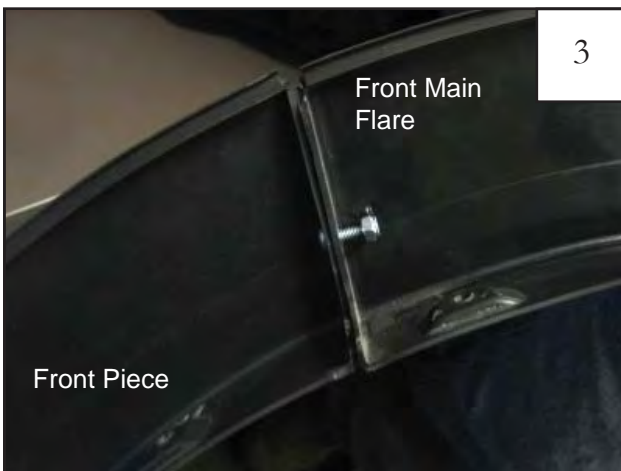
## Front Flare Installation Procedures (Driver's Side):



Determine which bumper your vehicle has, metal or plastic. For the metal bumper, use the shorter of the two front pieces. Pictured here is the metal bumper. Refer to step 10 for shorter front piece length.



For the plastic bumper, use the longer of the two front pieces. Pictured here is the plastic bumper. Refer to step 11 for longer front piece length.



Bolt front main flare and front pieces together with a supplied Phillips Pan Machine Screw (SW1-0003) and a supplied Nylock Nut (NU1-0004). Use a 3/8" wrench to hold #10-24x3/8" Nylock Nut in place.



Remove four factory installed screws with 8 mm socket wrench.



5

**2011-up Models Only (Optional):** If you encounter a fit problem, remove inner piece at bottom of front and rear wheel well.



6

**PLASTIC BUMPER ONLY:** Remove two factory installed tuflocks.



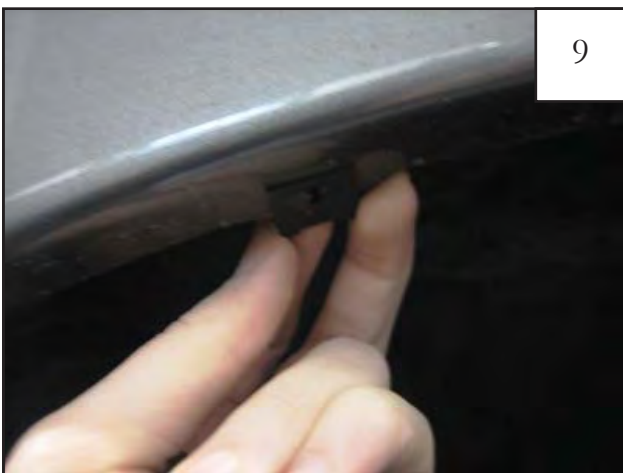
7

Install #10 U-Clips at these locations. See step 9.  
*NOTE: There are two factory holes near the rearward arrow. The correct hole for install is the one more toward the front of the vehicle.*



8

**PLASTIC BUMPER ONLY:** Install #10 U-Clips at these locations. See step 9.



9

Install #10 U-Clip over existing factory holes.



10

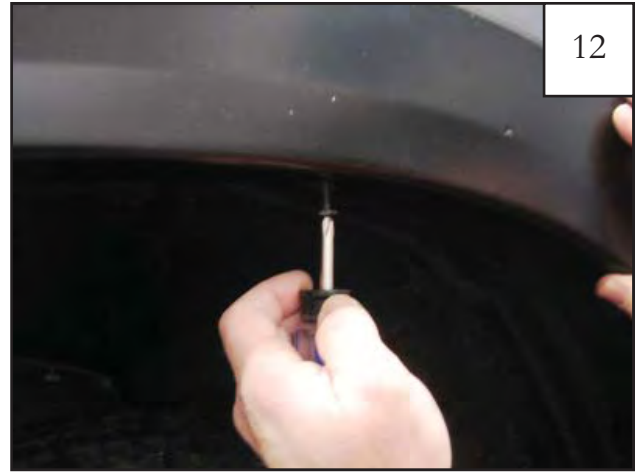
Install supplied screws at indicated locations. See Steps 12 & 13.





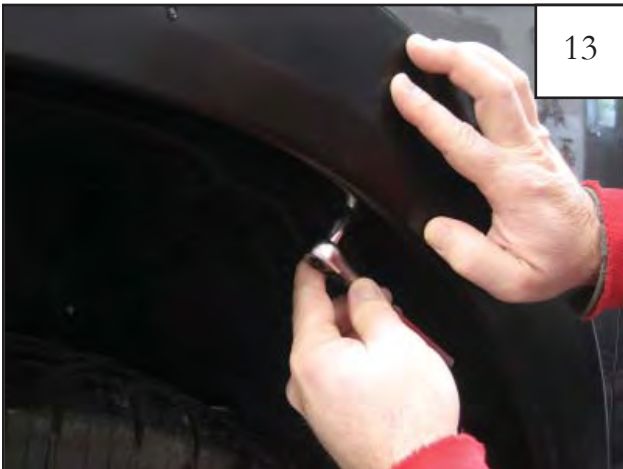
11

**PLASTIC BUMPER ONLY:** Additional supplied screw locations. See steps 12 & 13.



12

Hold flare to vehicle and start the supplied Screws (SW1-0056) with a Phillips Head Screwdriver. *Do not tighten.*



13

Hold flare to the vehicle and start the supplied screws with a #2 Phillips Head Screwdriver. *Do not tighten.*



14

**2011 Models Only (Ignore Spacer for other model years, just install screw):** For rearmost lower screw location, slide a supplied screw through hole in flare, install supplied Nylon Spacer (SP1-0002) over supplied screw, and start screw with a #2 Phillips Head Screwdriver. *Do not tighten.*



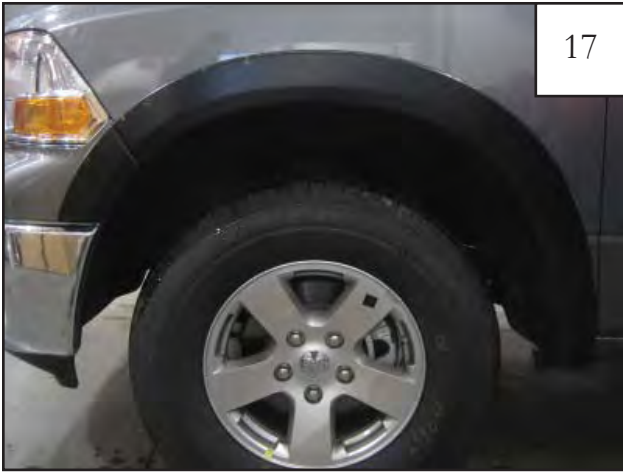
15

**METAL BUMPER ONLY:** Press firmly on flare and tighten all screws.



16

**PLASTIC BUMPER ONLY:** Press firmly on flare and tighten all screws.



**METAL BUMPER ONLY:** Completed front flare installation.



**PLASTIC BUMPER ONLY:** Completed front flare installation.

## Rear Flare Installation Procedures (Driver's Side):



Remove these five factory installed screws using an 8mm socket wrench. X's indicate a factory screw that will not be removed.



2013 Models and up : You will need to remove the plastic factory wheel well piece from the rear of the wheel well. Please follow steps 21 & 22.



Using a socket and wrench remove the two factory screws from the plastic wheel well piece.



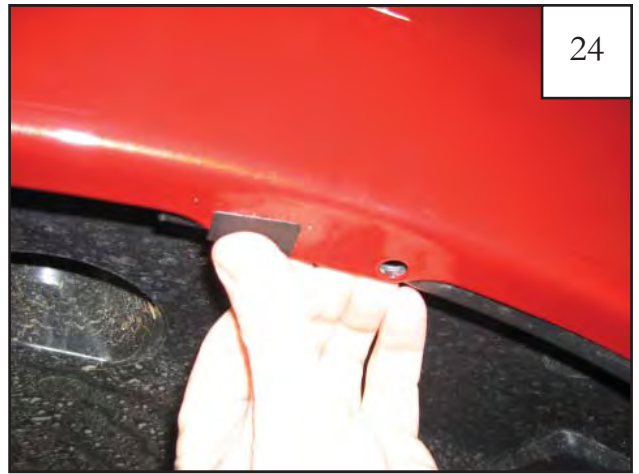
Using a screwdriver remove the two factory fasteners from the bottom side of the plastic wheel well piece. Remove plastic wheel well piece at this time.





23

Install speed clip in this location. See steps 24-26.



24

Install plastic tab over existing factory hole.



25

Install speed clip over plastic tab.



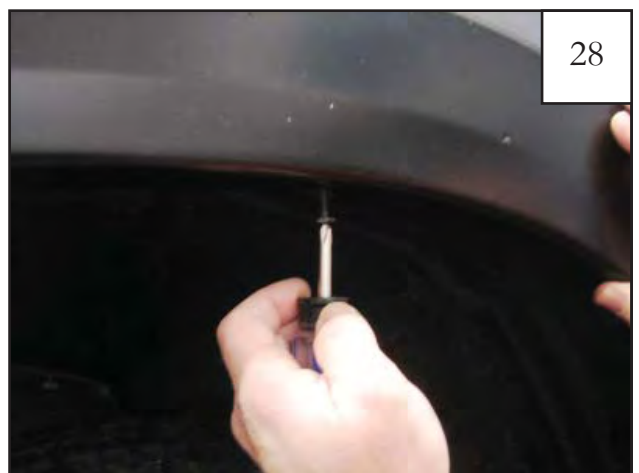
26

Using an awl or similar pointed tool, poke a hole through plastic tab using the speed clip hole as a guide.



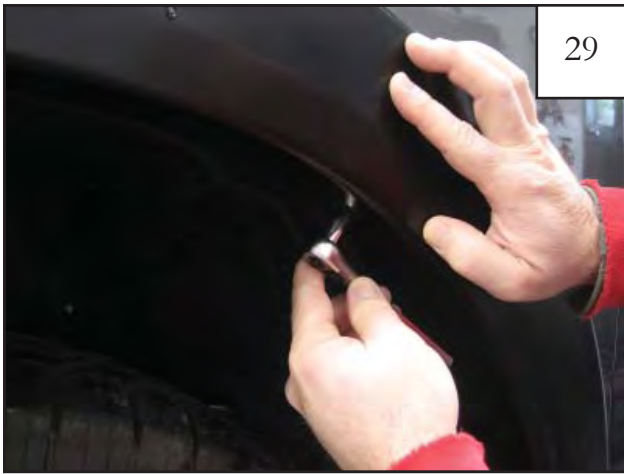
27

Supplied screw (SW1-0056) locations. See steps 28 & 29



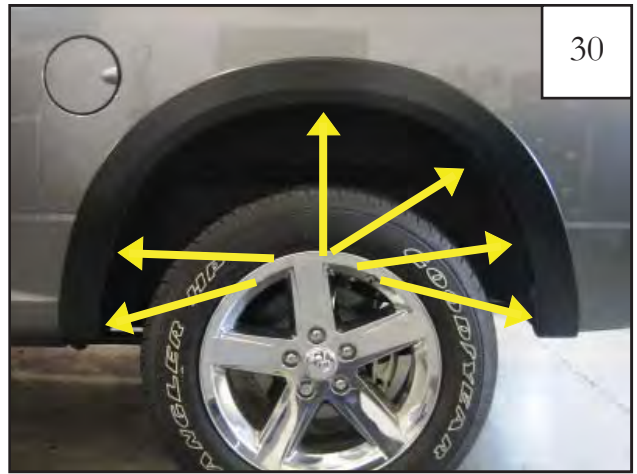
28

Start supplied screw (SW1-0056) using a Phillips head screwdriver. *Do not tighten.* Pictured here is the top center screw location of the rear wheel well.



29

Hold flare in place while you start the remaining supplied screws using an 8mm socket wrench. *Do not tighten.*



30

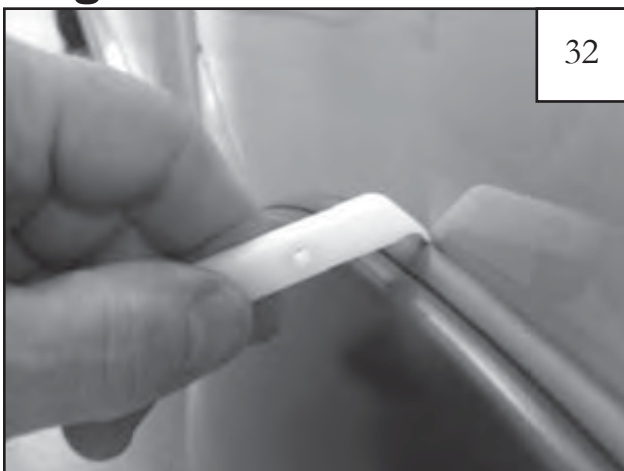
Press firmly on flare and tighten all screws.



31

Press firmly on flare and tighten all screws.

## Edge Trim Tool Procedures:



32

Using supplied Edge Trim Tool (ET1-0002), seat edge trim against vehicle by hooking curved end under edge trim at one end of flare. Next, slide around outer edge of flare to the other end.



33

Using flat end of supplied Edge Trim Tool (ET1-0002), seat edge trim against flare by inserting straight end between edge trim and flare at one end. Next, slide around entire edge to the other end.