



Chevrolet Pocket Style® Fender Flares Rear Pair

Rear Pair #40062-02

Rev-5 10/8/2014

For complete fitment info visit : www.bushwacker.com

STEP 1 – PRIOR TO INSTALLATION

- A) Bushwacker only** approves installing the flares according to these written instructions with the hardware provided. **WARNING:** Failure to install according to these instructions will invalidate the warranty. This includes, but is not limited to using alternative installation methods, hardware, or materials. **DO NOT USE:** Loctite, SuperGlue, or similar products on the hardware or the flares.
- B) Fit:** Verify the fit of the flares to vehicle. (Some filing, sanding, or cutting may be necessary to ensure proper fit).
- C) Painting:** (Optional) if paint is desired it must be done prior to installing flares on vehicle. Clean outer surface with a good grade degreaser. **DO NOT USE LACQUER THINNER OR ENAMEL REDUCER AS A DEGREASER.** Wipe outer surface thoroughly with a tack rag prior to paint. Application of plastic adhesion promoter for ABS plastic as per your paint system manufacturer's recommendations is required. Paint flares using a high quality enamel, or polyurethane automotive paint. If painting edge trim (not recommended), use a flex additive.
- D) Performance:** Using larger Tires may increase the area required to turn the vehicle. Some Tire/Rim combinations may require lowering bump stops and or installing steering stops to prevent tire from contacting flare.
- E) Exhaust System:** Modifications may be necessary to maintain a minimum 4" clearance between flares and exhaust pipes. (Exhaust gases should not vent directly onto flares)
- F) Metal Protection:** All exposed fasteners and bare metal should be treated with rust resistant paint **BEFORE** installing flares. Spray inner fender wells with undercoating **AFTER** flare attachments have been completed.
- G) Decals:** Flares may interfere with existing decals on vehicle. If you wish, remove decals prior to installation of flares.

TOOLS FOR EASY INSTALLATION:

- 1/2" Wrench
- Utility Knife
- Putty Knife
- #2 Phillips Driver
- Grease Pencil / Marker
- Awl (optional)

LIMITED LIFETIME WARRANTY AGAINST ANY MANUFACTURING DEFECTS

- To claim a warranty, you must provide Proof of Purchase.

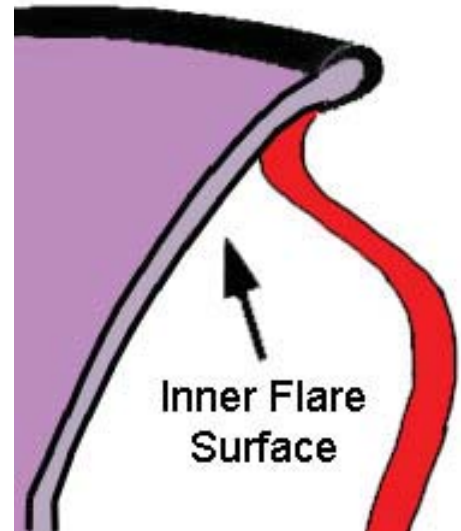
Included in Hardware Kit:

- | | | | | | | | | | | | | | |
|----|---|----|---|----|---|----|---|----|--|----|---|----|---|
| 1. |  | 2. |  | 3. |  | 4. |  | 5. |  | 6. |  | 7. |  |
| | CL1-0005,
Dacromet "U"
Spring Clip,
10 pcs | | SW1-0050,
10 x 5/16 Phillips
Truss Screw,
10 pcs | | MT1-0002,
1" x 1" x .017"
Black Tab,
10 pcs | | SW1-0067,
5/16 x 18 x 3/8"
SS Torx Screw,
20 pcs | | WA1-0012,
.320 x .700 x .03
SS Washer,
20 pcs | | NU1-0019,
5/16-18 Jam Fin.
Nylock Nut,
20 pcs | | SW1-0052,
T-45 Torx Bit,
1 pc |
| 8. |  | | | | | | | | | | | | |
| | GP1-0008,
Duro (NC02/S 70)
Edge Trim,
172 inches | | | | | | | | | | | | |

STEP 2 - EDGE TRIM INSTALLATION

A. Peel two to three inches of red vinyl backing away from Edge Trim (GP1-0008) tape. Applying the adhesive side of the edge trim to the inner side of the flare, affix the edge trim to the top edge of the flare (the portion that comes in contact with the vehicle).

B. Press edge trim into place along the top edge of the flare in one-foot increments, pulling red vinyl backing free as you continue to work your way around the top edge of the flare.



Pocket Hardware Installation Procedures:



1

Put a Washer (WA1-0012) on each Bolt (SW1-0067).



2

Put each Bolt/Washer combination through a pocket hole in the flare, Bolt head and Washer on the outside.



3

Place a Nut (NU1-0019) over the end of each Bolt and tighten, using a 1/2" wrench for the Nut and the supplied Torx Bit (SW1-0052) for the Bolt. Repeat for remaining pockets.

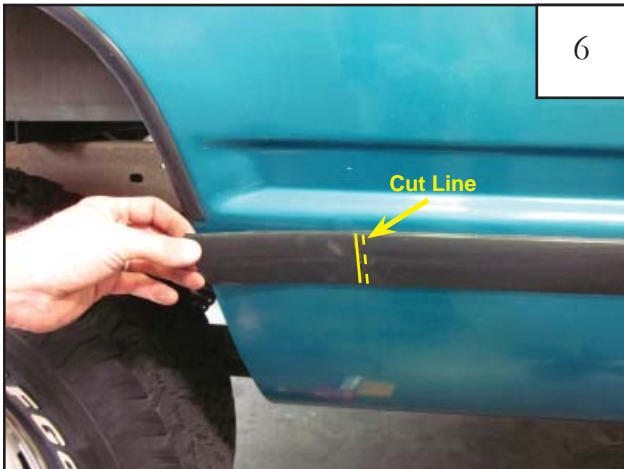
Rear Flare Installation Procedures:



4
Remove factory fender trim and mud flaps (when installed).



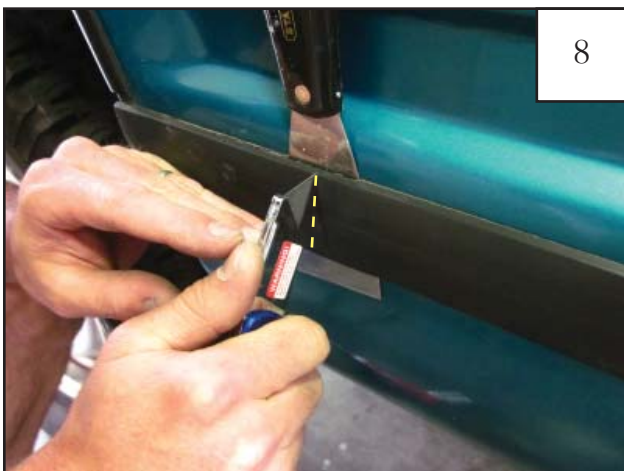
5
The factory installed body side molding (when present) will need to be trimmed to allow the flare to lay flush against the sheet metal. Hold the flare up to the wheel well opening and mark a line on the body side molding where the flare overlaps it.



6
Remove the flare and mark a cut line 1/4" beyond overlap line. Use blow dryer or heat gun to heat molding.



7
Slide putty knife between the molding and the body of the vehicle.



8
Carefully cut on marked line with a utility knife, using the putty knife as a guard against the vehicle. Sand molding to desired finished edge.



9
Hold flare in position on fender using moderate pressure. Using a grease pencil, mark five hole locations using the holes in the flare as a guide. (See Step 10)



10

Hole locations to be marked.



11

Remove flare. Center a supplied Tab (MT1-0002) over the marks made in step 10, aligning edge of tab with inside edge of fender lip (tab may extend over outside of fender).



12

Install supplied clips (CL1-0005) over each tab location.



13

Reposition flare on fender. Start supplied Screw (SW1-0050) through two corner hole locations and through each Clip (CL1-0005) installed in step 12. If needed, use awl to align holes with the installed clips.



14

Ensuring flare is properly located on fender, start supplied screws (SW1-0050) through each of the remaining holes.



15

Applying moderate pressure to outside surface of flare, tighten all screws beginning with the two corner locations and then the remaining screws.