



IMPORTANT WARRANTY & INSTALLATION INSTRUCTIONS ATTACHED

*Please Forward All Attached Information to Consumer
Warranty Not Valid Unless Returned to CORSA Exhaust*

We ask that you take a few moments to complete our warranty registration form:

TO ACTIVATE YOUR LIMITED LIFETIME WARRANTY GO TO:

CORSAPERFORMANCE.COM/WARRANTY



For Full-Color Installation Instructions, Please Visit:

CORSAPERFORMANCE.COM and Search by Part Number

Please be sure to review the enclosed instructions prior to beginning the installation process. If you have any questions about the enclosed parts, instructions or encounter a problem during Installation: **CALL CORSA PERFORMANCE TECHNICAL ASSISTANCE AT 800.486.0999**

TOOLS NEEDED: Safety glasses, 13 mm socket or wrench,
15mm socket or wrench, torque wrench

Please be sure to review the attached instructions prior to beginning the installation process. If you have any questions about the enclosed parts, instructions or encounter a problem during installation, call CORSA Performance Technical Assistance at 800.486.0999. Do not attempt to make any modifications to parts as this will void your warranty.

| Parts List: | |
|-----------------------------|-------------------------------|
| 1 Driver Side Front Pipe | 1 Passenger Side Rear Pipe |
| 1 Passenger Side Front Pipe | 1 Tube Anti-Seize |
| 1 Tunnel Muffler Assembly | 6 Torca Clamps 2.5" |
| 1 Driver Side Rear Pipe | 1 Driver Side Rear Muffler |
| | 1 Passenger Side Rear Muffler |

All Torca clamps should be tightened using a properly calibrated Torque Wrench. Using an air impact gun will damage the clamp and reduce its ability to effectively seal the joint. It may also cause the joint to separate thereby causing damage to your exhaust system and your vehicle.

CAUTION: Prior to installation, be sure your vehicle is parked on a level surface, and the exhaust system is cool. For safety purposes and ease of installation, we urge you to take your vehicle to a qualified service center or muffler installer that employs the use of a lift.

INSTALLATION NOTE: Be sure to apply the provided anti-seize lubricant to all bolts, fasteners and clamps. A pouch is included with the hardware kit. Apply the supplied anti-seize lubricant to the threads ONLY of all TORCA band clamps. Failure to follow this procedure can cause the nuts to seize on clamps and potentially damage threads. **WARNING:** Be sure to thoroughly clean hands after use. Anti-seize lubricant will tarnish stainless steel parts.

Exhaust System Removal:

- Using a 15mm socket or wrench, remove the four flange nuts (See Fig. A). **NOTE:** Be sure to save all nuts, bolts, rubber isolators and the cross brace removed from the vehicle. They will be used to install the CORSA Performance exhaust system in later steps.
- Using a 13mm socket or wrench, remove the two cross brace bolts and the cross brace (See Fig. B).
- Remove the four rubber isolators located after the rear mufflers from the factory exhaust system (See Fig. C).
- The only supports connecting the factory exhaust system to the vehicle are located at the inlet of the rear mufflers. Support the exhaust system, and keeping the rubber isolators connected to the exhaust system, slide the rubber isolators off of the vehicle (See Fig. D).
- Remove the exhaust system.

For technical assistance,
call (800) 486-0999.



FIG. A



FIG. B

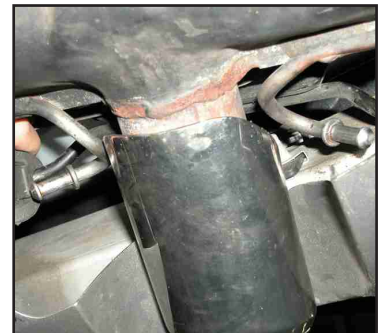


FIG. C

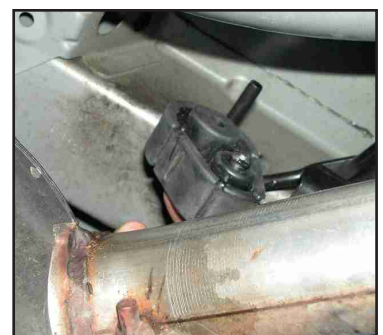


FIG. D

CORSA Performance Exhaust System Installation:

1. Remove all exhaust system components from the shipping cartons, including clamps. **NOTE: There are six 2.5-inch clamps supplied.**

NOTE: Apply the anti-seize lubricant (supplied) to the threads ONLY of all the TORCA band clamps and flange bolts. Failure to follow this procedure can cause nuts to seize on clamps and potentially destroy threads.

After applying anti-seize lubricant, be sure to thoroughly clean hands as lubricant will tarnish stainless steel.

2. Locate the driver side front pipe assembly (**See Fig. E**).
3. Place the assembly over the flange bolts after the catalytic converter, and using a 15mm socket or wrench with the nuts removed earlier; install the driver side front pipe assembly. Snug bolts (**See Fig. F**).
4. Repeat steps 2 and 3 for passenger side front pipe assembly.
5. Locate the tunnel muffler assembly and place TORCA clamps on the inlet ends of assembly (**See Fig. G**).
6. Slide the inlets of the tunnel muffler assembly over the outlets of the front pipe assemblies and snug fit clamps (**See Fig. H**).
7. Locate the driver side rear pipe and place TORCA clamp on the inlet end of pipe (**See Fig. I**).
8. Slide the inlet of the driver side rear pipe over the driver side outlet of the tunnel muffler assembly and snug fit clamp (**See Fig. J**).

For technical assistance, call (800) 486-0999.



FIG. E



FIG. F



FIG. G



FIG. H



FIG. I



FIG. J

9. Repeat steps 7 and 8 for passenger side rear pipe.
10. Locate the driver side rear muffler assembly, place TORCA clamp on inlet end of assembly, and slide one of the rubber isolators removed with the factory exhaust onto the wire hanger at the muffler inlet (See Fig. K).
11. Slide rubber isolator, now connected to the wire hanger at the muffler inlet, onto the vehicle hanger mount (See Fig. M).
12. Slide driver side rear muffler assembly inlet onto driver side rear pipe outlet. Snug fit clamp (See Fig. L).
13. Slide rubber isolators, located at the exhaust tip, onto driver side muffler assembly hangers (See Fig. N).
14. Repeat steps 10 through 13 for passenger side rear muffler assembly.
15. Reinstall the cross brace using a 13mm socket or wrench and the two cross brace bolts removed earlier.
16. Visually inspect the exhaust system position, tip alignment, clamp orientation (See Fig. O) and exhaust pipe clearances. Make any necessary adjustments at the various slip joints.



FIG. K



FIG. L



FIG. M



FIG. N

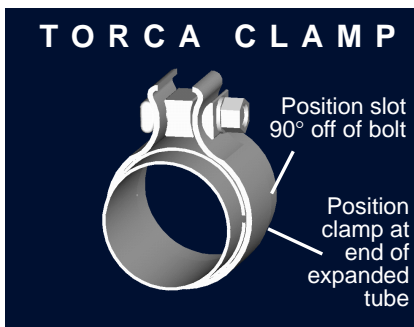


FIG. O



NOTE: IMPORTANT-Make sure that the small drain hole in the muffler faces down when installed.

For technical assistance, call (800) 486-0999.

If you have any questions about the installation process, call CORSA Performance and ask one of our Sales & Technical Service Representatives. Do not attempt to make any modifications to parts as this will void your warranty.

17. When the exhaust system is in the desired location, tighten all TORCA clamps working from the front to rear of vehicle.

Torque Setting: 45 ft.-lbs.

18. Tighten the flange bolts to the 22 ft-lbs.
19. It is **STRONGLY SUGGESTED** that all clamps be checked and tightened if necessary after road testing the vehicle once the system has cooled.

NOTE: During cold weather start-ups, you may experience an exhaust sound that is deeper and louder in tone than usual. This is temporary and will diminish to normal levels once your engine has reached its normal operating temperature.

NOTE: Immediately following the installation of your CORSA exhaust system, you may experience a trace of smoke after initial start-up. DO NOT be alarmed. The smoke is caused by the burning of a small amount of forming oil residue used in the manufacturing process.

Cadillac CTS-V Exhaust System

