



IMPORTANT WARRANTY & INSTALLATION INSTRUCTIONS ATTACHED

*Please Forward All Attached Information to Consumer
Warranty Not Valid Unless Returned to CORSA Exhaust*

We ask that you take a few moments to complete our warranty registration form:

TO ACTIVATE YOUR LIMITED LIFETIME WARRANTY GO TO:
CORSAPERFORMANCE.COM/WARRANTY



For Full-Color Installation Instructions, Please Visit:
CORSAPERFORMANCE.COM and Search by Part Number

Please be sure to review the enclosed instructions prior to beginning the installation process. If you have any questions about the enclosed parts, instructions or encounter a problem during installation:
CALL CORSA PERFORMANCE TECHNICAL ASSISTANCE AT 800.486.0999

Please take time to read and understand these installation instructions.

CORSA recommends that the installation of this system be performed by a qualified service center or professional muffler installer who has the necessary equipment, tools and experienced personnel. However, if you decide to perform this install, the use of a hoist and an additional person will be required.

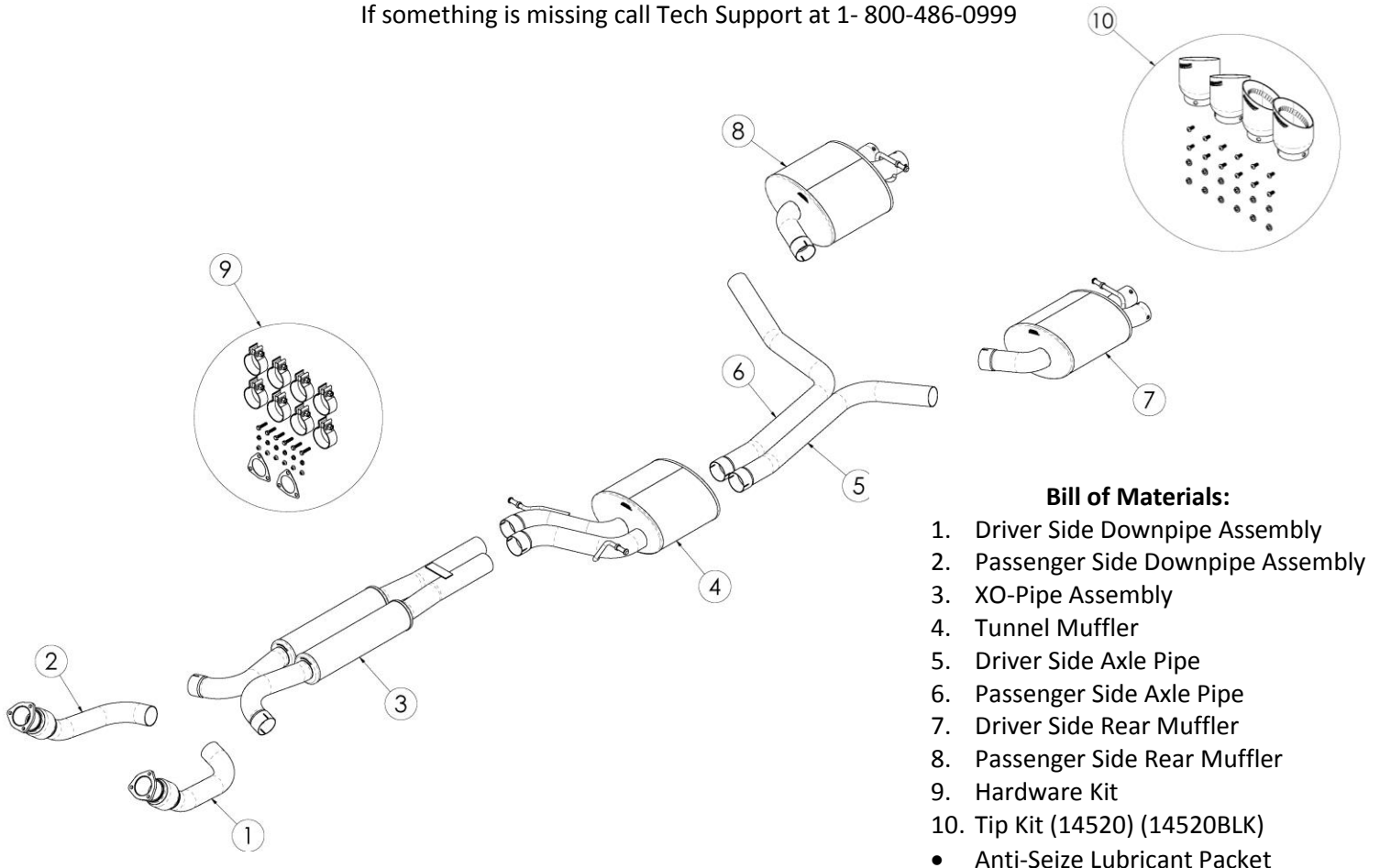
CAUTION: Never work on a hot exhaust system. Allow time for the vehicle to cool. Always wear eye protection when working under a vehicle.

Recommended Tools:

- 12 mm Wrench
- 13mm Wrench
- 13mm Socket & Ratchet
- 15 mm Socket
- 16 mm Socket
- 5/32" Hex Key
- Torque Wrench
- T25 Torx Bit Driver
- Flathead Screwdriver
- Grommet Pullers
- Soap & Water Solution
- Safety Glasses

Please confirm that all parts are present according to the bill of materials before beginning the installation.

If something is missing call Tech Support at 1- 800-486-0999



Factory Exhaust System Removal:

The stock exhaust system will be removed in three sections; the cat-back, driver, and passenger downpipe sections. Having another person to assist with removal of the cat-back section is highly recommended.

1. Using a 16mm socket and ratchet, remove the 4 bolts and the cross brace near the sleeve clamps connecting the cat-back section to the downpipes. Set the bolts and cross brace aside for reinstallation later on. **(Fig A)**
2. Using a T25 torx bit, remove the 6 torx screws holding the plastic undertray near the front of the car. Then, using a flathead screwdriver, carefully remove the 2 pushpin fasteners from the undertray. The undertray will now be free to remove from the vehicle. Set the undertray and fasteners aside for reinstallation later on. **(See Fig B, C, D)**
3. Using a 13mm socket and ratchet, loosen the bolts on the sleeve clamps connecting the cat-back section to the downpipes. **(Fig E, F)**
4. Support the front part of the cat-back section using another person or stand to keep the front of the exhaust from falling.
5. Using grommet pullers or a similar device, remove the 2 factory hangers from the factory grommets near the front of the cat-back section. **(Fig G, H)**

NOTE: The use of a soapy water solution may aid in the removal and later installation of the hangers in the rubber isolators.

6. Remove the rear muffler hangers from the factory grommets. Be careful to support the rear mufflers while removing hangers from the grommets, as the system will fall and could scratch the rear fascia. After removing both rear muffler hangers, the system can now be removed from the car. **(Fig I, J)**
7. Pull the cat-back towards the rear of the car first to separate the cat-back section from the sleeve clamps. Then lower the cat-back section and remove from the vehicle. **(Fig K)**
8. With the cat-back section out of the way, begin removing the downpipes.
9. Using a 12mm wrench, loosen the 3 flange nuts on the driver side downpipe and remove the downpipe and gasket from the car. **(Fig L)**
10. Repeat step #9 on the passenger side. **(Fig M)**
11. The stock system removal is now complete.

REMOVAL PICTURES ON NEXT PAGE 

Factory Exhaust Removal Pictures



Fig. A



Fig. B



Fig. C



Fig. D



Fig. E

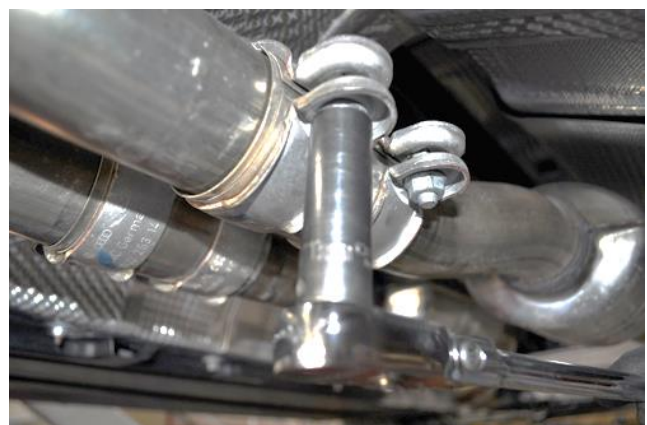


Fig. F

CONTINUES ON NEXT PAGE



Factory Exhaust Removal Pictures



Fig. G



Fig. H

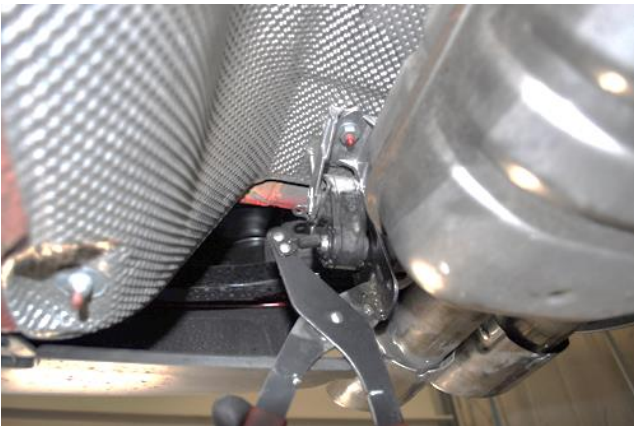


Fig. I



Fig. J



Fig. K

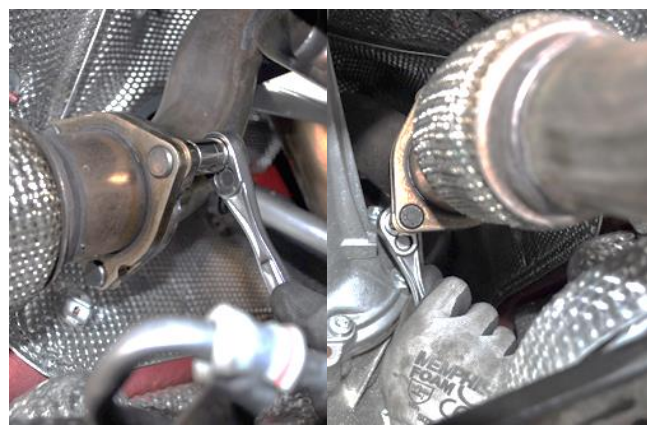


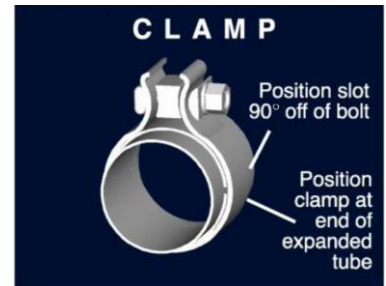
Fig. L

Fig. M

Installation of CORSA Exhaust System:

NOTE: Apply the anti-seize lubricant (*supplied*) to the threads **ONLY** of all the clamps and flange bolts. Failure to follow this procedure can cause nuts to seize on clamps and potentially destroy threads. After applying anti-seize lubricant, be sure to thoroughly clean your hands, as lubricant will tarnish stainless steel. All clamps should be tightened using a properly calibrated Torque Wrench. Using an air impact gun will damage the clamp and reduce its ability to effectively seal the joint. It may also cause the joint to separate, thereby causing damage to your exhaust system and to your vehicle.

NOTE: Align all clamps so that the center of the clamp bolt is 90 degrees from the notch in the pipe. (See Fig. CLAMP)



12. Remove all exhaust system components from the shipping carton, including the eight 2.5" exhaust clamps, and the downpipe flange gaskets, bolts, lock washers, and nuts.
13. Locate the CORSA downpipe assembly for the driver side, the flange gasket, 3 flange bolts, nuts, and lockwashers. Place the flange bolts with lockwashers through the factory bolt holes on the factory catalytic converter flange, with the head of the bolts toward the catalytic converter side. Use the bolts to align the new gasket and CORSA downpipe flange to the factory connection point. Hand-thread the three flange nuts onto the flange bolts. Using a 13mm socket and a 13mm wrench, loosely snug the flange bolts at this time. **(Fig N, O)**
14. Repeat step 13 for the passenger side downpipe assembly. **(Fig P, Q)**
15. Locate the CORSA Crossover Pipe "X-O Pipe" assembly and two 2.5" clamps. Slide one clamp over the outlet of each downpipe. While supporting the rear of the XO-Pipe using a jackstand or other support and with the XO-Pipe bracket facing up, slide the expanded ends of the XO-Pipe assembly over the outlets of the downpipes. Now, slide the clamps over the pipe expansion and loosely snug the clamps using a 15mm socket and ratchet. Keep the XO-Pipe supported until installation is complete. **(Fig R, S, T, U, V)**
16. Locate the CORSA tunnel muffler assembly and two 2.5" clamps. Slide on clamp over each inlet of the tunnel muffler assembly. Insert the hangers into the factory rubber grommets. A Soapy water solution will aid in the installation process of the hangers. While supporting the rear of the tunnel muffler, loosely snug the 2.5" clamps at the front of the tunnel muffler assembly using a 15mm socket and ratchet. Keep the tunnel muffler supported until the installation is complete. **(Fig W, X, Y, Z, AA)**
17. Locate the CORSA passenger side axle pipe and one 2.5" clamp. Slide the 2.5" clamp over the expanded end of the axle pipe and slide the expansion over the passenger side outlet of the tunnel muffler. Loosely snug the clamp using a 15mm socket and ratchet. **(Fig BB, CC)**
18. Repeat step 17 for the CORSA driver side axle pipe. **(Fig DD, EE, FF)**

CONTINUES ON NEXT PAGE



19. Locate the CORSA driver side rear muffler and one 2.5" clamp. Slide the 2.5" clamp over the expanded end of the rear muffler and slide the expansion over the driver side axle pipe outlet. Insert the hanger into the factory rubber grommet. Loosely snug the clamp using a 15mm socket and ratchet. **(Fig GG, HH, II)**
20. Repeat step 19 for the CORSA passenger side rear muffler. **(Fig JJ, KK, LL)**
21. Locate the CORSA exhaust tips and tip hardware (3 button head socket cap screws and 3 lock washers per tip). Do not remove protective covering until installation is complete. Pay close attention to each tip and its proper location, as all four are specific to driver/passenger side and inner/outer tip. Bolt-on each tip, making sure that tips are aligned rotationally and running parallel with the length of the vehicle. Do not completely tighten bolts until the entire system has been aligned and all clamps have been torqued.
22. Visually inspect the exhaust system position, tip alignment, clamp orientation, and exhaust system clearances. Make any necessary adjustments at the clamp joints.
23. Reinstall the factory underbody tray and tunnel cross brace, reusing the original factory hardware.
24. Once the exhaust system is in the desired location, starting at the front of the system, tighten all flange bolts to **20 ft-lbs**, and all TORCA exhaust clamps to **45 ft-lbs**. After all clamps have been tightened, remove support from XO-Pipe and tunnel muffler. Recheck the XO-Pipe for equal clearance between the heat shields and the tunnel cross brace on each side; loosen clamps and readjust if necessary.
25. It is strongly suggested that all clamps be checked and re-tightened (if necessary) to the recommended torque after initial road testing of the vehicle, as thermal cycling has occurred on the system. Please wait until system has fully cooled to perform this step.

NOTE: During cold weather start-ups, you may experience an exhaust sound that is deeper and louder in tone than usual. This is temporary and will diminish to normal levels once your engine has reached its normal operating temperature.

NOTE: Immediately following the installation of your exhaust system, you may experience a trace of smoke after initial start-up. DO NOT be alarmed. The smoke is caused by the burning of a small amount of forming oil residue used in the manufacturing process.

INSTALL PICTURES ON NEXT PAGE 

CORSA Exhaust Installation Pictures



Fig. N



Fig. O

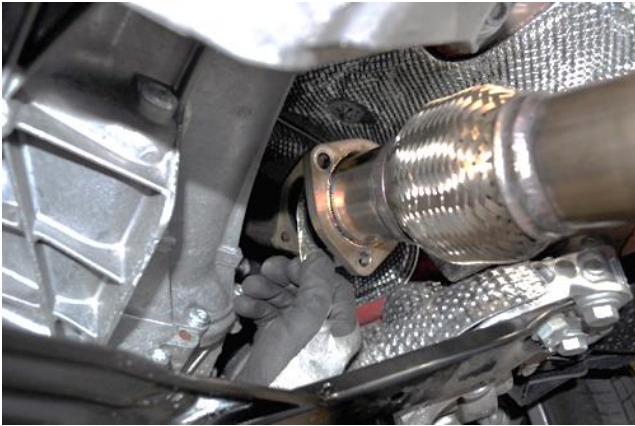


Fig. P



Fig. Q



Fig. R



Fig. S



Fig. T

CONTINUES ON NEXT PAGE 

CORSA Exhaust Installation Pictures



Fig. U



Fig. V



Fig. W



Fig. X



Fig. Y

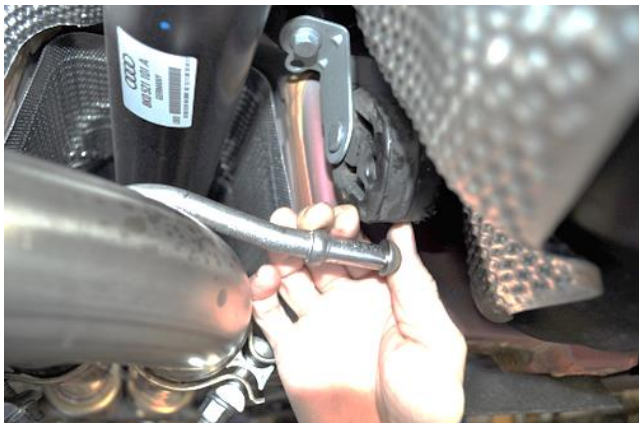


Fig. Z

CONTINUES ON NEXT PAGE 

CORSA Exhaust Installation Pictures



Fig. AA



Fig. BB



Fig. CC



Fig. DD



Fig. EE



Fig. FF

CONTINUES ON NEXT PAGE 

CORSA Exhaust Installation Pictures

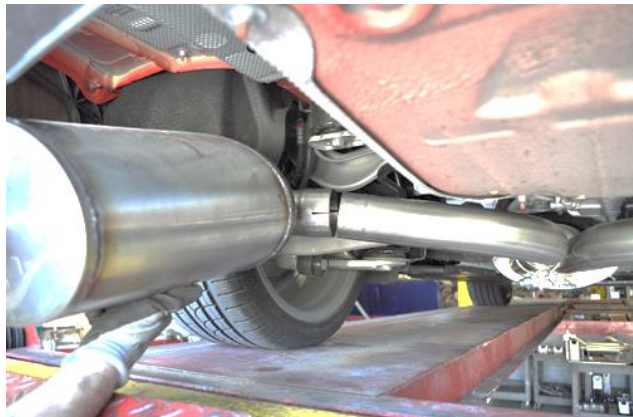


Fig. GG

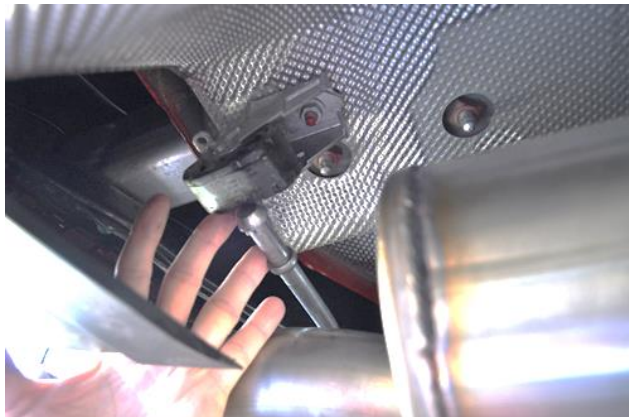


Fig. HH



Fig. II



Fig. JJ



Fig. KK



Fig. LL