



IMPORTANT WARRANTY & INSTALLATION INSTRUCTIONS ATTACHED

*Please Forward All Attached Information to Consumer. Warranty
Not Valid Unless Returned to dB Performance Exhaust*

We ask that you take a few moments to
Complete our warranty registration form.

To Activate Your 10 Year LIMITED WARRANTY, Go To:
dBexhaust.com/warranty



MADE IN THE USA



For Full-Color Installation Instructions, Please Visit:
dBexhaust.com & Search Part #

Please be sure to review the enclosed instructions prior to beginning the installation process. If you have any questions about the enclosed parts, instructions or encounter a problem during installation, **CALL dB Performance Exhaust TECHNICAL ASSISTANCE AT 800.486.0999**



**Exhaust System Installation
 Cat-Back Exhaust System
 2003-07 Dodge Ram 2500 5.9L Cummins Diesel
 QC/6.25', QC/8' & MC/6.25' Bed, SRW or Dually
 Side Exit Tip
 PART NUMBER 25029**

Please take time to read and understand these installation instructions.

We recommend that the installation of this system be performed by a qualified service center or professional muffler installer who has the necessary equipment, tools and experienced personnel. However, if you decide to perform this install, the use of a hoist and an additional person will be required.

CAUTION: Never work on a hot exhaust system. Allow time for the vehicle to cool. Always wear eye protection when working under a vehicle.

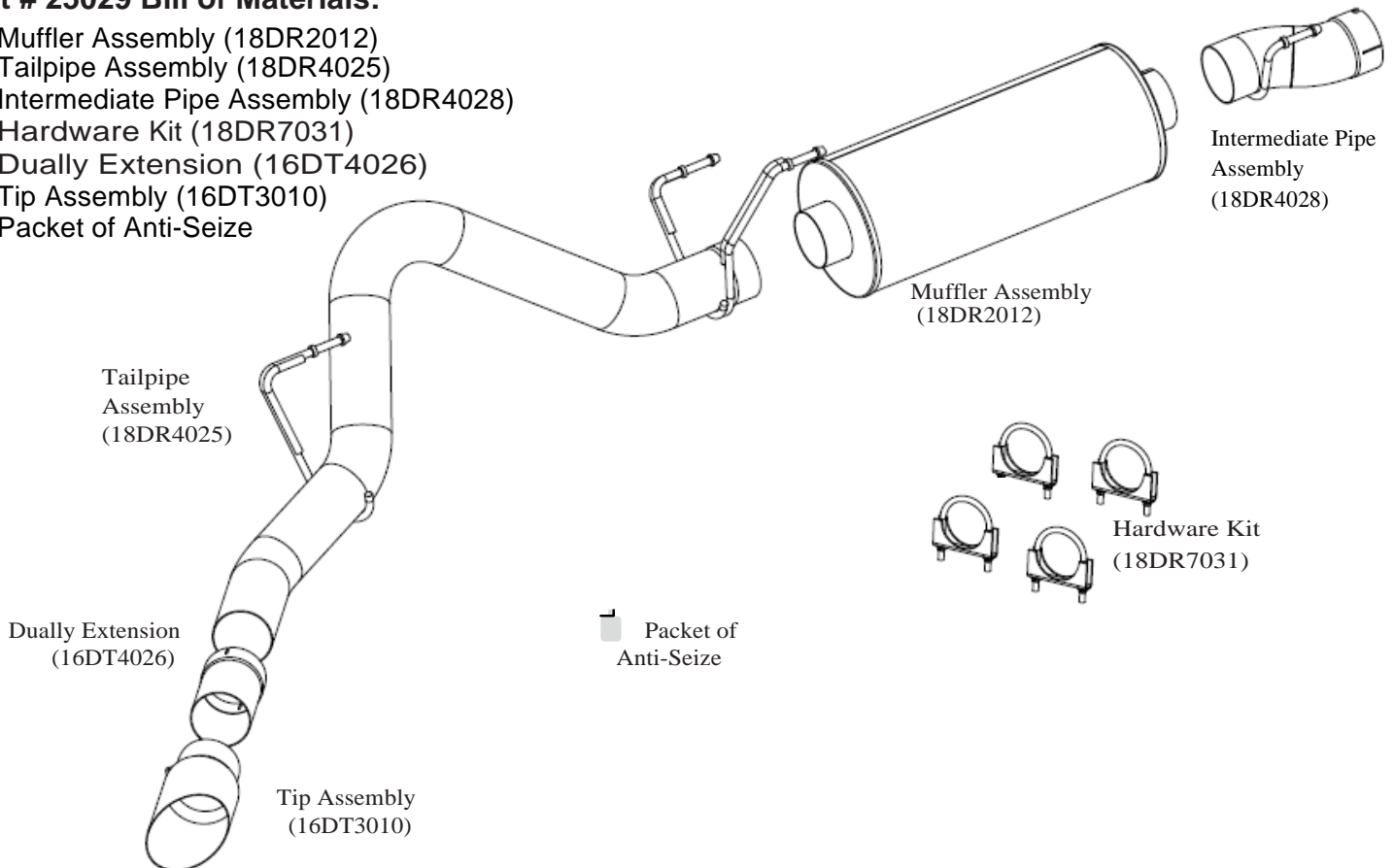
Recommended Tools:

- Tape measure
- 14mm & 15mm Socket
- 7/16" Socket
- Safety glasses
- Black marking pen
- Chain style pipe cutter
- Soapy water
- Torque Wrench

Please confirm that all parts are present before beginning the factory exhaust system removal and CORSA dB Exhaust System installation.

Part # 25029 Bill of Materials:

- 1- Muffler Assembly (18DR2012)
- 2- Tailpipe Assembly (18DR4025)
- 3- Intermediate Pipe Assembly (18DR4028)
- 4- Hardware Kit (18DR7031)
- 5- Dually Extension (16DT4026)
- 6- Tip Assembly (16DT3010)
- 7- Packet of Anti-Seize



Removal of Stock Cat-Back Exhaust System:

- 1) Using a 14mm socket loosen the nuts on the clamp just in front of the factory muffler. If the clamp is rusted use a cut off wheel to remove the clamp. **See Fig. A.**
- 2) Due to the clamping effects of the factory clamp the installer may need to use a cut off wheel to cut a slot along the inlet side of the factory muffler pipe. This will make the removal of the factory muffler easier. **See Fig. B.**
- 3) Spray a soapy water solution at the four grommet locations shown in **Fig's C, D, and E.** There is one grommet located in front of the muffler toward the frame rail and two grommets located at the rear of the factory muffler. The fourth grommet is the rearward most toward the spare tire. Spraying these grommets will make the removal much easier.
- 4) Using grommet pullers or a similar device begin to remove the grommets from the factory hanger. Start from the front of the factory system and work your way back. Leave the rearmost grommet in place to support the system.
- 5) Now slide the complete muffler system toward the rear of the vehicle until the rear most hanger slides out of the grommet, then move the muffler system toward the front of the truck and downward to remove the muffler and tailpipe assembly as one unit. The removal of the stock system is complete. **See Fig's F and G.**



FIG. A



FIG. B



FIG. C



FIG. D

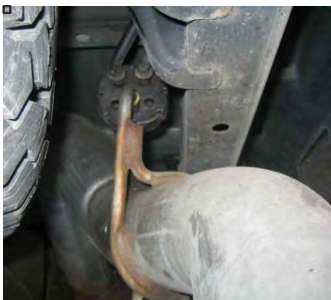


FIG. E



FIG. F



FIG. G

Installation of dB Cat-Back Exhaust System:

- 1) Locate the intermediate pipe assembly 18DR4028 and a 4" clamp. Slide the intermediate pipe onto the end of the factory cat pipe and pre-tighten the clamp using a 15mm socket at this time. Final tightening will be performed after all components are prealigned. **See Fig's H, I, and J.**
- 2) Locate the muffler 18DR2012 and a 4" clamp. Make sure that the weep hole is located in the down position when sliding the muffler onto the intermediate pipe. Support the rear end of the muffler with a stand type support. Pre-tighten the 4" clamp when the rear portion of the muffler is supported. **See Fig's K and L.**
- 3) Locate the tailpipe assembly 18DR4025 and a 4" clamp. From the rear of the truck slide the inlet side of the tailpipe over the rear axle. Align the inlet of the tailpipe with the muffler exit, and then slide the pipe assembly forward into the rear of the muffler exit. Place the factory grommets onto the hangers and pre-tighten the clamp at this time. **See Fig's M, N, O & P.**



FIG. H



FIG. I



FIG. J



FIG. K



FIG. L



**NOTE:
 IMPORTANT:
 Make sure that
 small drain hole
 in the muffler
 assembly faces
 down when
 installed.**



FIG. M



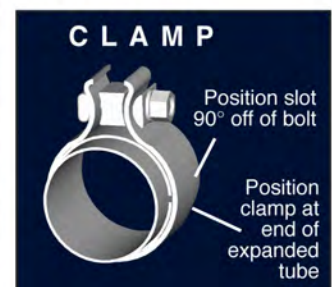
FIG. N



FIG. O



FIG. P





**Exhaust System Installation
Cat-Back Exhaust System
2003-07 Dodge Ram 2500 5.9L Cummins Diesel
QC/6.25', QC/8' & MC/6.25' Bed, SRW or Dually
Side Exit Tip
PART NUMBER 25029**

- 4) Locate tip. Slide the tip onto the end of the tailpipe and pre-tighten the clamp
- 5) Align the pipes to the final desired position. Use a torque wrench to tighten the clamps to 45 FT-LBS. Start from the front of the system and work toward the rear when performing the final tightening sequence.
- 6) It is strongly suggested that all clamps be checked and tightened after road testing the vehicle once the system has cooled.

NOTE: During cold weather start-ups, you may experience an exhaust sound that is deeper and louder in tone than usual. This is temporary and will diminish to normal levels once your engine has reached its normal operating temperature. NOTE: Immediately following the installation of your exhaust system, you may experience a trace of smoke after initial start-up. DO NOT be alarmed. The smoke is caused by the burning of a small amount of forming oil residue used in the manufacturing process.