

55333

FORD TAURUS
MERCURY SABLE

WIRING LOCATION GUIDE GUÍA DE UBICACIÓN DEL CABLEADO IDE D'EMPLACEMENT DES FILS



MUST READ FIRST!

All steps must be followed to ensure correct function of the T-Connector. To verify proper installation once installed, test by connecting a test light or properly wired trailer.

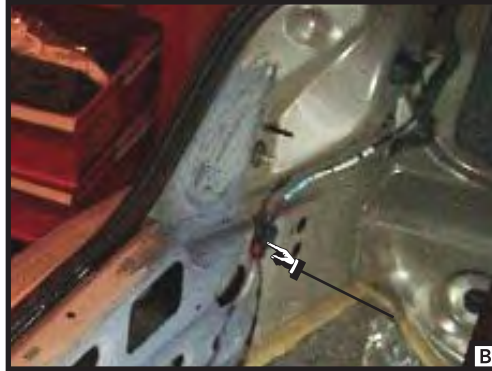
¡DEBE LEERSE PRIMERO!

Debe seguirse todos los pasos para asegurar el correcto funcionamiento del Conector-T. Para verificar la correcta instalación, pruebe conectando una luz de prueba o un remolque debidamente cableado.

À LIRE D'ABORD!

Pour assurer le bon fonctionnement du T-Connector, il faut suivre toutes les étapes. Pour vérifier que l'installation a été bien effectuée, branchez un feu de test ou une remorque correctement filéée.

5/14/09



English

1. Open the trunk and remove two plastic wing nuts on each side of the trunk holding the felt trunk in place. **[A]** Pull back on the trunk liner on each side to reveal the vehicles taillight wiring harness. The harness will have connectors that are similar to those on the T-connector harness. **[B]**

2. On the drivers side separate the connectors being sure not to damage the locking tabs. Insert the T-connector end with the yellow wire in-between the separated connectors. Make sure the connectors are fully inserted with locking tabs in place.

3. Route the T-connector end with the green wire underneath the trunk liner to the passenger side. Repeat step 2 on the passenger side using the green wire.

4. Adhere the black converter box to the frame of the car using the double-sided tape provided. Secure any loose parts of the T-connector with the cable ties provided.

5. Route the 4-flat wire to the center of the vehicle and out the trunk when in use. When not in use roll up and store in an out of the way location in the trunk.

WARNING!

Verify miscellaneous items that may be hidden behind or under any surface before drilling to avoid damage and/or personal injury.



55333