

55350 FORD BRONCO

WIRING LOCATION GUIDE GUÍA DE UBICACIÓN DEL CABLEADO IDE D'EMPLACEMENT DES FILS



MUST READ FIRST!

All steps must be followed to ensure correct function of the T-Connector. To verify proper installation once installed, test by connecting a test light or properly wired trailer.

¡DEBE LEERSE PRIMERO!

Debe seguirse todos los pasos para asegurar el correcto funcionamiento del Conector-T. Para verificar la correcta instalación, pruebe conectando una luz de prueba o un remolque debidamente cableado.

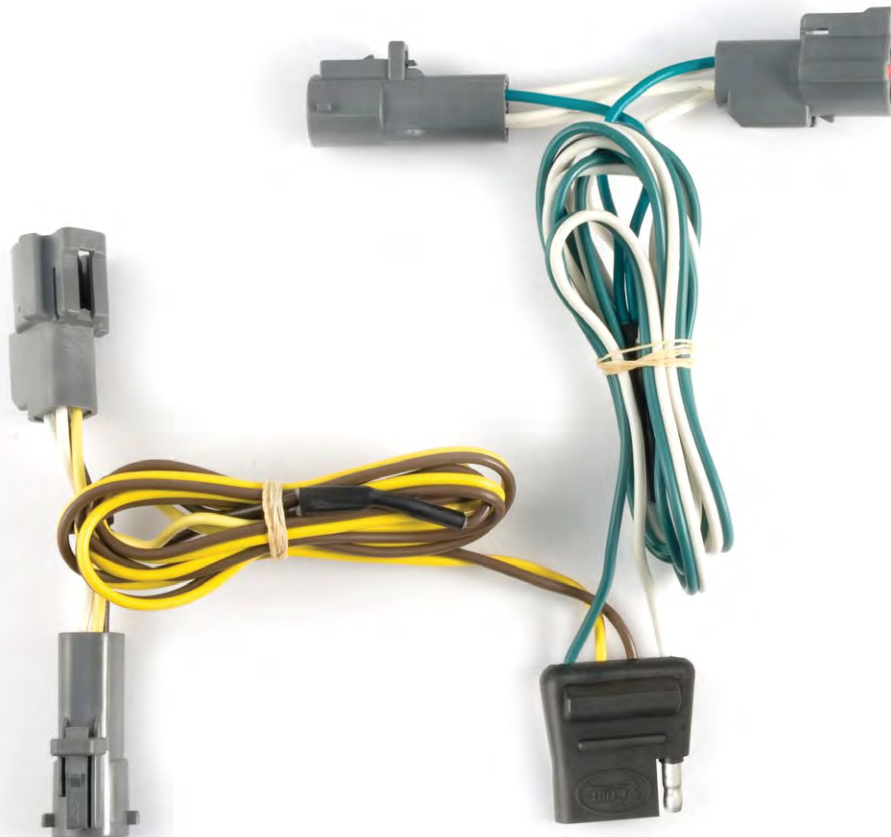
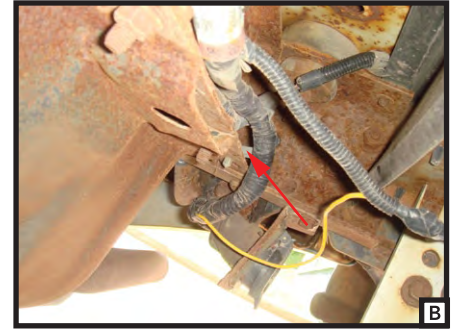
À LIRE D'ABORD!

Pour assurer le bon fonctionnement du T-Connector, il faut suivre toutes les étapes. Pour vérifier que l'installation a été bien effectuée, branchez un feu de test ou une remorque correctement filée.

10/25/10

English

1. Locate the vehicle's taillight wiring harness connectors underneath the vehicle, on the driver and passenger side behind the rear bumper (A,B). The connectors will be similar to those on the T-Connector harness.
2. Separate the driver side harness connectors, taking care not to damage the locking tabs. Insert the T-Connector harness end with the yellow wire between the separated connectors making sure the connectors are fully inserted with locking tabs in place.
3. Route the T-Connector end with the green wire across to the passenger side. Repeat Step 2 on the passenger side using the T-Connector end with the green wire.
4. Route the 4-Flat to the center of the vehicle and attach to a secure out of the way location near the hitch.



55350