

56014

FORD FOCUS CHEVROLET CORVETTE

WIRING LOCATION GUIDE GUÍA DE UBICACIÓN DEL CABLEADO IDE D'EMPLACEMENT DES FILS



MUST READ FIRST!

All steps must be followed to ensure correct function of the T-Connector. To verify proper installation once installed, test by connecting a test light or properly wired trailer.

¡DEBE LEERSE PRIMERO!

Debe seguirse todos los pasos para asegurar el correcto funcionamiento del Conector-T. Para verificar la correcta instalación, pruebe conectando una luz de prueba o un remolque debidamente cableado.

À LIRE D'ABORD!

Pour assurer le bon fonctionnement du T-Connector, il faut suivre toutes les étapes. Pour vérifier que l'installation a été bien effectuée, branchez un feu de test ou une remorque correctement filée.

2/22/2011

English

Ford Focus:

1. Open the trunk. Remove the rear scuff panel by removing the plastic fasteners holding it in place (A). On both sides of the trunk pull back on the felt trunk liner to reveal two 10mm nuts holding each taillight in place. Remove 10mm nuts and carefully pull out each taillight.

2. Behind each taillight assembly locate the black taillight wiring harness connectors. The connectors will be similar to those on the T-Connector harness. Separate the connectors taking care not to damage the locking tabs (B).

3. Route the T-Connector end with the yellow wire up from underneath the vehicle to the driver side housing. Insert the T-Connector end with the yellow wire between the separated connectors (C). Make sure the connectors are fully inserted with locking tabs in place.

4. Locate a suitable grounding point near the connector such as an existing screw with nut in the vehicle's frame or drill a 3/32" hole and secure white ground wire using ring terminal and screw provided.

5. Repeat Step 3 on the passenger side using the T-Connector end with the green wire.

6. Route the 4-Flat to the center of the vehicle and secure in an out of the way location near the hitch using the cable ties provided.

Chevrolet Corvette:

1. Remove the two taillights closest the the center of the vehicle by removing the T10 Torx screws holding each in place (D).

2. Behind each taillight assembly locate the black taillight wiring harness connectors. The connectors will be similar to those on the T-Connector harness. Separate the connectors taking care not to damage the locking tabs.

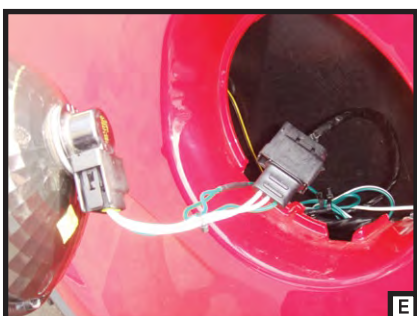
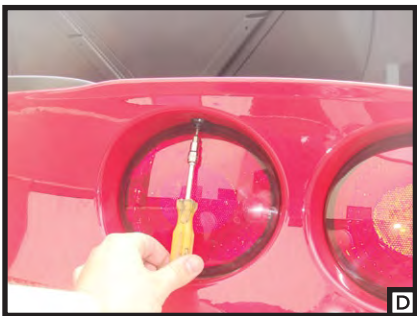
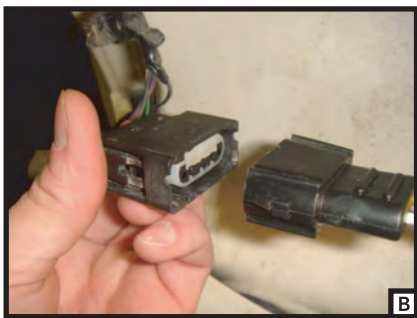
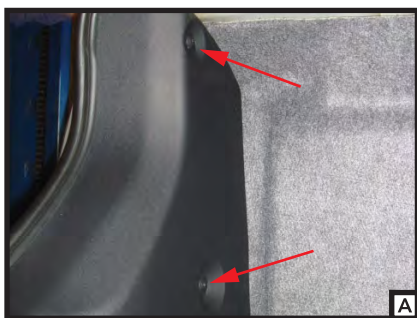
3. Route the T-Connector end with the yellow wire across from the passenger side taillight opening to the driver's side taillight opening. Insert the T-Connector end with the yellow wire between the separated connectors. Make sure the connectors are fully inserted with locking tabs in place.

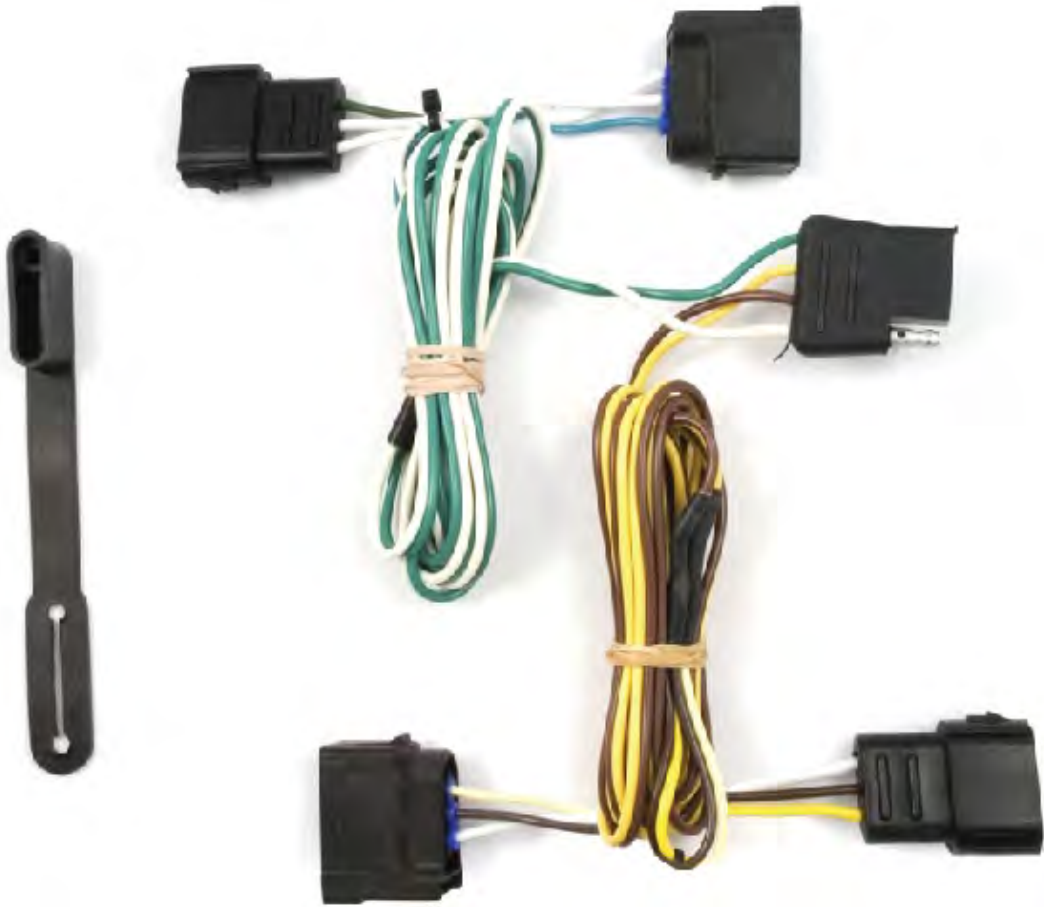
4. Repeat Step 3 on the passenger side using the T-Connector end with the green wire (B).

6. Open the trunk. On the passenger side pull back on the felt trunk liner, behind the taillight, to reveal the rubber grommet that the taillight wires run through. Remove the grommet and make a small slit from the outside to the center using a utility knife. Route the 4-Flat and white ground wire in through the slot made in the grommet. Locate a suitable grounding point near the connector such as an existing screw with nut in the vehicle's frame near the grommet (F).

7. Route the 4-Flat out from under the felt trunk liner and out of the trunk when in use. When not in use roll up and store in an out of the way location in the trunk.

INSTALLATION QUESTIONS? CALL TECHNICAL SUPPORT AT 1-800-798-0813





56014