

56054

CHRYSLER SEBRING

WIRING LOCATION GUIDE GUÍA DE UBICACIÓN DEL CABLEADO IDE D'EMPLACEMENT DES FILS



MUST READ FIRST!

All steps must be followed to ensure correct function of the T-Connector. To verify proper installation once installed, test by connecting a test light or properly wired trailer.

¡DEBE LEERSE PRIMERO!

Debe seguirse todos los pasos para asegurar el correcto funcionamiento del Conector-T. Para verificar la correcta instalación, pruebe conectando una luz de prueba o un remolque debidamente cableado.

À LIRE D'ABORD!

Pour assurer le bon fonctionnement du T-Connector, il faut suivre toutes les étapes. Pour vérifier que l'installation a été bien effectuée, branchez un feu de test ou une remorque correctement filée.

12/21/2010

English

1. Open the trunk (A). Remove two plastic fasteners holding the felt trunk liner in place in the rear of the trunk (B). Pull back on felt trunk liner behind taillights to reveal two plastic wing nuts holding the taillight in place (C). Remove wingnuts and pull taillights away from vehicle, behind the taillights locate the vehicles taillight wiring harness connectors (D). The connectors will be similar to those on the T-Connector harness. On both sides of the vehicle separate the connectors taking care not to damage the locking tabs (E).

2. On the driver side insert the T-Connector ends between the separated connectors. Make sure the connectors are fully inserted with locking tabs in place.

WARNING!

Verify miscellaneous items that may be hidden behind or under any surface before drilling to avoid damage and/or personal injury.

3. Locate a suitable grounding point near the connector such as an existing screw with nut in the vehicle's frame or drill a 3/32" hole and secure white ground wire using ring terminal and screw provided.

4. Adhere the black converter box to the frame of the vehicle using the double-sided tape provided.

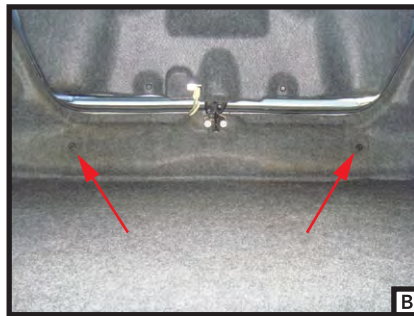
5. Review the CME-PCL-INS instruction sheet and route the black power wire from the battery to the converter as shown.

6. Route the 4-flat and the T-Connector end with the green wire down thru the opening under the taillight. Route the T-Connector end with the green wire across the backside of the bumper and up thru the opening under the passenger side taillight. Repeat Step 2 on the passenger side using the T-Connector end with the green wire.

7. Route the 4-flat wire to the center of the vehicle. Secure any loose parts of the T-Connector with the cable ties provided.

8. Reinstall all items removed during install.

INSTALLATION QUESTIONS? CALL TECHNICAL SUPPORT AT 1-800-798-0813





56054