

56105

NISSAN MURANO

WIRING LOCATION GUIDE GUÍA DE UBICACIÓN DEL CABLEADO IDE D'EMPLACEMENT DES FILS



MUST READ FIRST!

All steps must be followed to ensure correct function of the T-Connector. To verify proper installation once installed, test by connecting a test light or properly wired trailer.

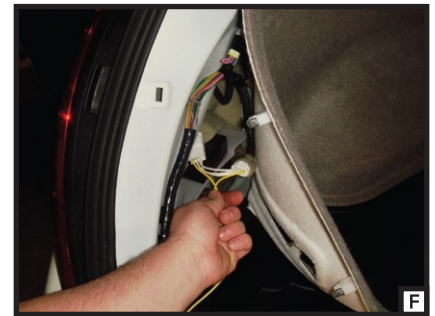
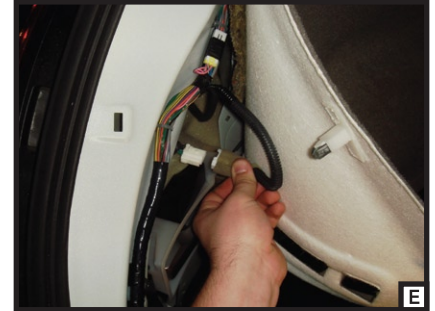
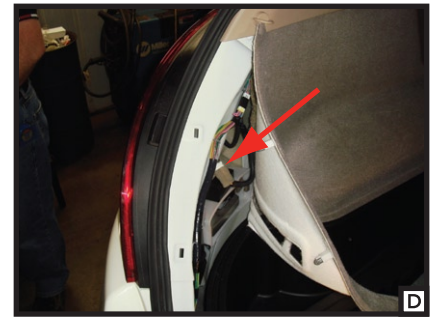
¡DEBE LEERSE PRIMERO!

Debe seguirse todos los pasos para asegurar el correcto funcionamiento del Conector-T. Para verificar la correcta instalación, pruebe conectando una luz de prueba o un remolque debidamente cableado.

À LIRE D'ABORD!

Pour assurer le bon fonctionnement du T-Connector, il faut suivre toutes les étapes. Pour vérifier que l'installation a été bien effectuée, branchez un feu de test ou une remorque correctement filéée.

9/1/2010



English

1. Open the rear hatch and remove the cargo area floor covering (A). Lift up the spare tire compartment cover and remove the plastic storage compartments on each side (B). On both sides remove the rear cargo hooks by flipping down the plastic cover and removing the bolts holding them in place (C). On both sides pull back on the rear trim panel to locate the vehicles taillight wiring harness (D). The harness will have connectors that are similar to those on the T-Connector harness.

2. Starting on the driver side separate the connectors being taking care not to damage the locking tabs (E). Insert the T-Connector end with the yellow wire between the separated connectors (F). Make sure the connectors are fully inserted with locking tabs in place.

WARNING!
Verify miscellaneous items that may be hidden behind or under any surface before drilling to avoid damage and/or personal injury.

3. Locate a suitable grounding point near the connector such as an existing screw with nut in the vehicle's frame or drill a 3/32" hole and secure white ground wire using eyelet and screw provided.

4. Locate a flat spot and adhere the black converter box to the frame of the vehicle using the double-sided tape provided.

5. Route the T-Connector end with the green wire across to the passenger side behind the rear scuff panel. Repeat Step 2 on the passenger side using the T-Connector end with the green wire.

6. Review the CME-PCL-INS instruction sheet and route the black power wire from the battery to the converter's power input lead as shown.

7. Re-install all items removed during install.



56105