

11004**06 MAZDA MX-5 MIATA CONVERTIBLE****10/3/2009****GROSS LOAD CAPACITY WHEN USED AS A WEIGHT CARRYING HITCH: 2,000 LBS. TRAILER WEIGHT & 200 LBS. TONGUE WEIGHT.**

DO NOT EXCEED VEHICLE MANUFACTURER'S RECOMMENDED TOWING CAPACITY.

WARNING: ALL NON-TRAILER LOADS APPLIED TO THIS PRODUCT MUST BE SUPPORTED BY AUXILIARY STABILIZING STRAPS.

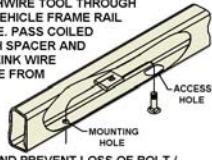
** FAILURE TO PROPERLY SUPPORT NON-TRAILER LOADS WILL VOID PRODUCT WARRANTY**

HAVING INSTALLATION QUESTIONS? CALL TECHNICAL SUPPORT AT 1-800-798-0813

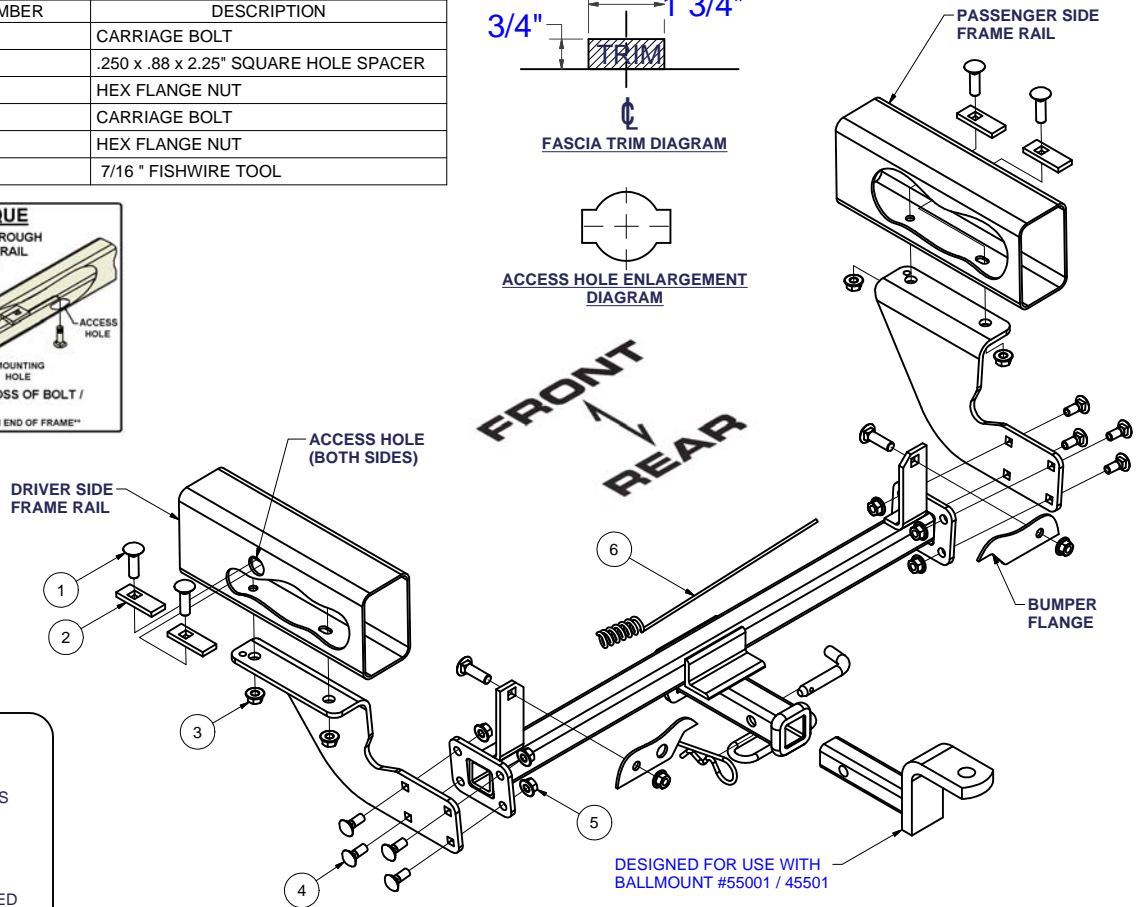
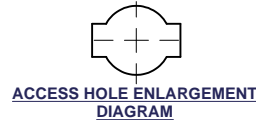
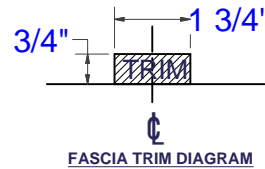
Parts List			
ITEM	QTY	PART NUMBER	DESCRIPTION
1	6	7/16-14 x 1 1/2	CARRIAGE BOLT
2	4	CM-SP2	.250 x .88 x 2.25" SQUARE HOLE SPACER
3	6	7/16-14	HEX FLANGE NUT
4	8	3/8-16 x 1 LG.	CARRIAGE BOLT
5	8	3/8-16	HEX FLANGE NUT
6	1	CM-438-FW	7/16" FISHWIRE TOOL

FISHWIRE TECHNIQUE

INSERT COILED END OF FISHWIRE TOOL THROUGH HITCH MOUNTING HOLE IN VEHICLE FRAME RAIL AND OUT THE ACCESS HOLE. PASS COILED END OF FISHWIRE THROUGH SPACER AND THREAD BOLT INTO COIL. KINK WIRE TO KEEP SPACER SEPARATE FROM BOLT AS SHOWN. PULL FISHWIRE, SPACER, AND BOLT THROUGH FRAME AND OUT MOUNTING HOLE. USE FISHWIRE TO GUIDE HITCH DURING MOUNTING AND PREVENT LOSS OF BOLT / SPACER INSIDE FRAME RAIL.



NOTE: SOME VEHICLES MAY FISHWIRE THROUGH END OF FRAME

**HITCH WEIGHT:** 26 LBS.**INSTALL TIME**

PROFESSIONAL: 90 MINUTES

NOVICE (DIY): 180 MINUTES

INSTALL NOTES:

- DRILLING REQUIRED
- FASCIA TRIMMING REQUIRED
- LOWER MUFFLER

INSTALLATION STEPS

- 1) Locate center of lower rear fascia, trim a 1 3/4" by 3/4" opening as shown in the diagram above.
- 2) Lower muffler and remove the plastic cap on the outside of each frame rail. Enlarge access holes to allow for spacers to pass through. Enlarge access holes in 2 spots to allow for plug re-installation.
- 3) Raise main body and securely install 7/16" carriage bolts and nuts into straps.
- 4) Fishwire 7/16" carriage bolts and spacers thru enlarged hole in frame rail, (both sides).
- 5) Raise muffler and loosely install passenger and driver side plate to frame. Loosely install all (8) 3/8" x 1" carriage bolts and nuts into side plates and main body.
- 6) Torque all 3/8" fasteners to 30 lb-ft.
- 7) Drill remaining holes in frame rails for 7/16" fasteners, using the hitch as a template.
- 8) Fishwire remaining fasteners into position. Re-install plastic plug removed in step 2.
- 9) Torque all 7/16" fasteners to 50 lb-ft.

PERIODICALLY CHECK THIS RECEIVER HITCH TO ENSURE THAT ALL FASTENERS ARE TIGHT AND THAT ALL STRUCTURAL COMPONENTS ARE SOUND.

Curt Manufacturing Inc., warrants this product to be free of defects in material and/or workmanship at the time of retail purchase by the original purchaser. If the product is found to be defective, Curt Manufacturing Inc., may repair or replace the product, at their option, when the product is returned, prepaid, with proof of purchase. Alteration to, misuse of, or improper installation of this product voids the warranty. Curt Manufacturing Inc.'s liability is limited to repair or replacement of products found to be defective, and specifically excludes liability for incidental or consequential loss or damage.