

11206**2002-2004 HONDA CIVIC Si**

11/30/2012

GROSS LOAD CAPACITY WHEN USED AS A WEIGHT CARRYING HITCH: 2,000 LBS. TRAILER WEIGHT & 200 LBS. TONGUE WEIGHT.

*****DO NOT EXCEED VEHICLE MANUFACTURER'S RECOMMENDED TOWING CAPACITY.*******WARNING: ALL NON-TRAILER LOADS APPLIED TO THIS PRODUCT MUST BE SUPPORTED BY AUXILIARY STABILIZING STRAPS.****** FAILURE TO PROPERLY SUPPORT NON-TRAILER LOADS WILL VOID PRODUCT WARRANTY****

HAVING INSTALLATION QUESTIONS? CALL TECHNICAL SUPPORT AT 1-800-798-0813

Parts List

ITEM	QTY	PART NUMBER	DESCRIPTION
1	1	1/2-13 x 2"	HEX BOLT
2	1	HFN 1213	HEX FLANGE NUT
3	4	3/8 - 16 x 1 1/4	HEX BOLT
4	4	3/8"	FENDER WASHER
5	4	HFN3816	HEX FLANGE NUT
6	1	CM-SP128	.375 x 1.50" SPACER

TOOLS REQUIRED

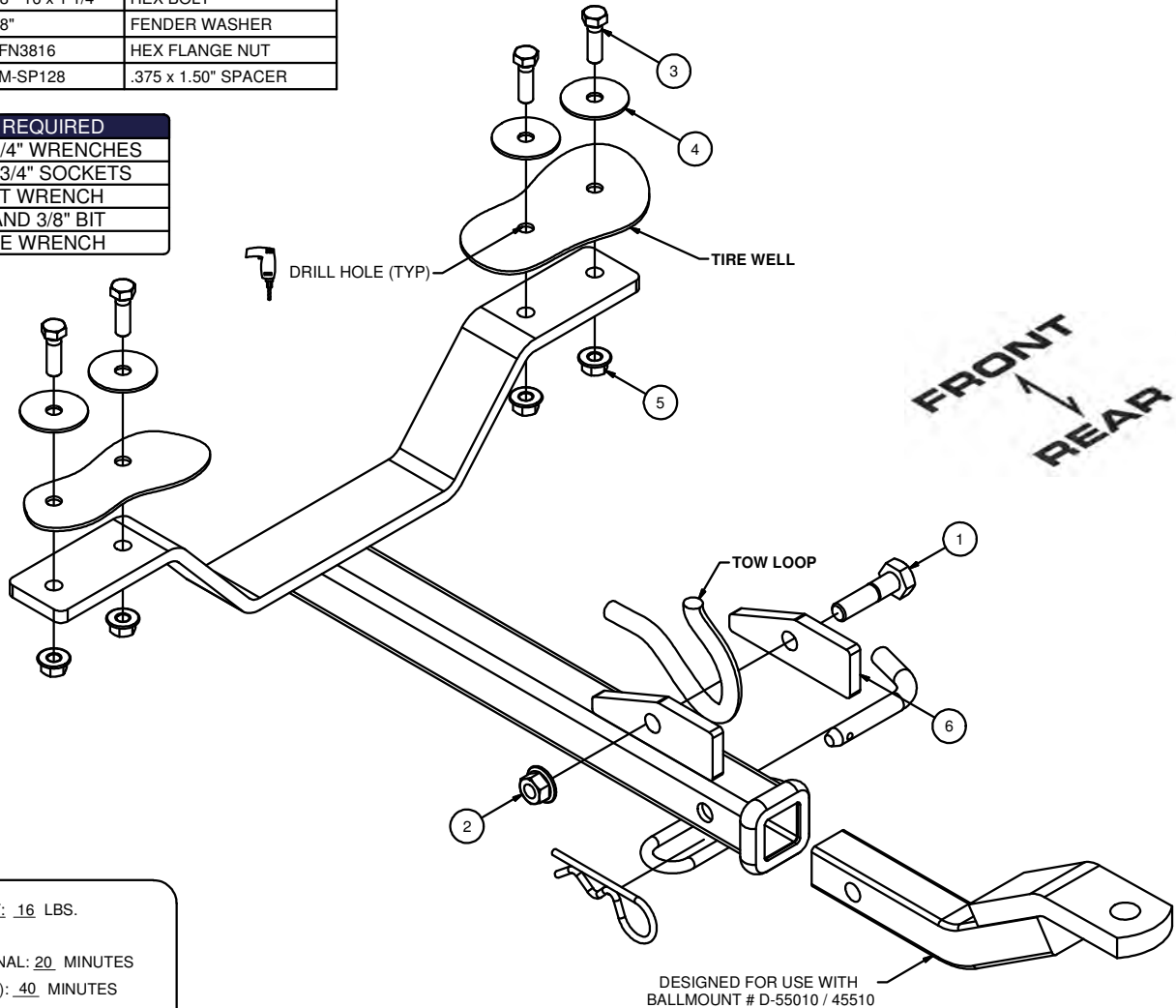
9/16" AND 3/4" WRENCHES

9/16" AND 3/4" SOCKETS

SOCKET WRENCH

DRILL AND 3/8" BIT

TORQUE WRENCH



HITCH WEIGHT: .16 LBS.

INSTALL TIME

PROFESSIONAL: 20 MINUTES

NOVICE (DIY): 40 MINUTES

INSTALL NOTES:

- DRILLING REQUIRED

INSTALLATION STEPS

1. Clear trunk and tire well area for drilling. Lift hitch into position on car with mounting tab fitting to driver side of vehicle tow loop. Install mounting plate and fastener as shown.
2. With hitch forward bracket fitting to bottom of tire well, drill tire well (4) places through bracket for 3/8" diameter bolts. Install fasteners as shown.
3. Torque all 1/2" hardware to 110 ft-lbs. Torque all 3/8" hardware to 45 ft-lbs.

PERIODICALLY CHECK THIS RECEIVER HITCH TO ENSURE THAT ALL FASTENERS ARE TIGHT AND THAT ALL STRUCTURAL COMPONENTS ARE SOUND.

Curt Manufacturing Inc., warrants this product to be free of defects in material and/or workmanship at the time of retail purchase by the original purchaser. If the product is found to be defective, Curt Manufacturing Inc., may repair or replace the product, at their option, when the product is returned, prepaid, with proof of purchase. Alteration to, misuse of, or improper installation of this product voids the warranty. Curt Manufacturing Inc.'s liability is limited to repair or replacement of products found to be defective, and specifically excludes liability for incidental or consequential loss or damage.