

11212

00-03 HONDA S2000 ROADSTER

3/1/10

GROSS LOAD CAPACITY WHEN USED AS A WEIGHT CARRYING HITCH: 2,000 LBS. TRAILER WEIGHT & 200 LBS. TONGUE WEIGHT.

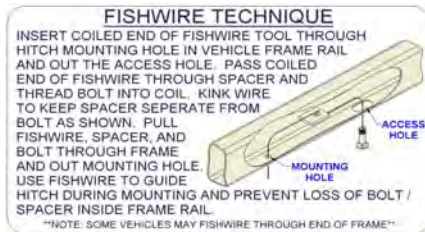
DO NOT EXCEED VEHICLE MANUFACTURER'S RECOMMENDED TOWING CAPACITY.

WARNING: ALL NON-TRAILER LOADS APPLIED TO THIS PRODUCT MUST BE SUPPORTED BY 18050 STABILIZING STRAPS.

** FAILURE TO PROPERLY SUPPORT NON-TRAILER LOADS WILL VOID PRODUCT WARRANTY**

HAVING INSTALLATION QUESTIONS? CALL TECHNICAL SUPPORT AT 1-800-798-0813

Parts List				
ITEM	QTY	PART NUMBER	DESCRIPTION	
1	4	3/8 - 16 x 1 1/4	HEX BOLT	
2	4	3/8"	FENDER WASHER	
3	4	3/8"	LOCK WASHER	
4	4	3/8 - 16	HEX NUT	
5	1	CM-438-FW	7/16" FISHWIRE TOOL	
6	2	7/16-14 x 1 1/2	CARRIAGE BOLT	
7	2	CM-SP108	2.00 X 0.88 X .125 SPACER	
8	2	7/16	HELICAL LOCK WASHER	
9	2	7/16-14	HEX NUT	



HITCH WEIGHT: 23 LBS.

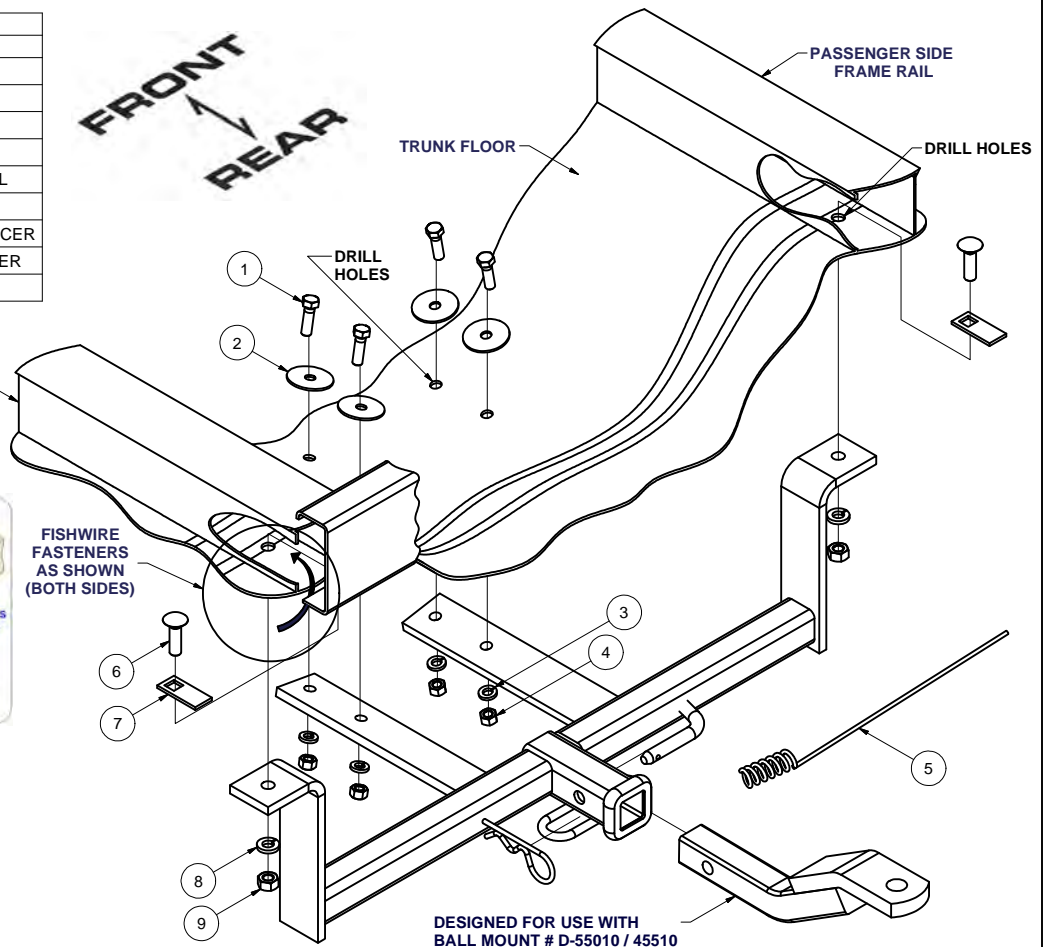
INSTALL TIME

PROFESSIONAL: 45 MINUTES

NOVICE (DIY): 90 MINUTES

INSTALL NOTES:

- DRILLING REQUIRED
- FISHWIRE FASTENERS
- SILICONE FASTENERS
- EMPTY TRUNK

**INSTALLATION STEPS**

1. This hitch mounts to the vehicle at the bottom surface of the frame rails above the exhaust tips and to the bottom of the trunk floor.
2. Place hitch in position centered on the vehicle and mark the bottom surface of the frame rail for holes.
3. Centerpunch and drill holes 1 1/2" diameter through the the bottom surface of the frame rails. Using the fishwire method, pull 7/16" carriage bolt, with CM-SP108 spacers into hole as shown.
4. Using washers and nuts called out, bolt the hitch into position being careful to not push carriage bolts back into the frame.
5. Clear the trunk area for drilling. Using the hitch as a template, drill the trunk floor (4) places for 3/8" diameter bolts. Fasten the hitch to the trunk floor using fasteners as shown. Bolts are placed from inside with a fender washer.
6. Silicone around fasteners in trunk to seal out water and exhaust fumes.
7. Torque all 3/8" fasteners to 30 lb-ft, and all 7/16" fasteners to 50 lb-ft.

PERIODICALLY CHECK THIS RECEIVER HITCH TO ENSURE THAT ALL FASTENERS ARE TIGHT AND THAT ALL STRUCTURAL COMPONENTS ARE SOUND.

Curt Manufacturing Inc., warrants this product to be free of defects in material and/or workmanship at the time of retail purchase by the original purchaser. If the product is found to be defective, Curt Manufacturing Inc., may repair or replace the product, at their option, when the product is returned, prepaid, with proof of purchase. Alteration to, misuse of, or improper installation of this product voids the warranty. Curt Manufacturing Inc.'s liability is limited to repair or replacement of products found to be defective, and specifically excludes liability for incidental or consequential loss or damage.