

11397

1997-2000 ACURA CL

11/19/2012

GROSS LOAD CAPACITY WHEN USED AS A WEIGHT CARRYING HITCH: 2,000 LBS. TRAILER WEIGHT & 200 LBS. TONGUE WEIGHT.

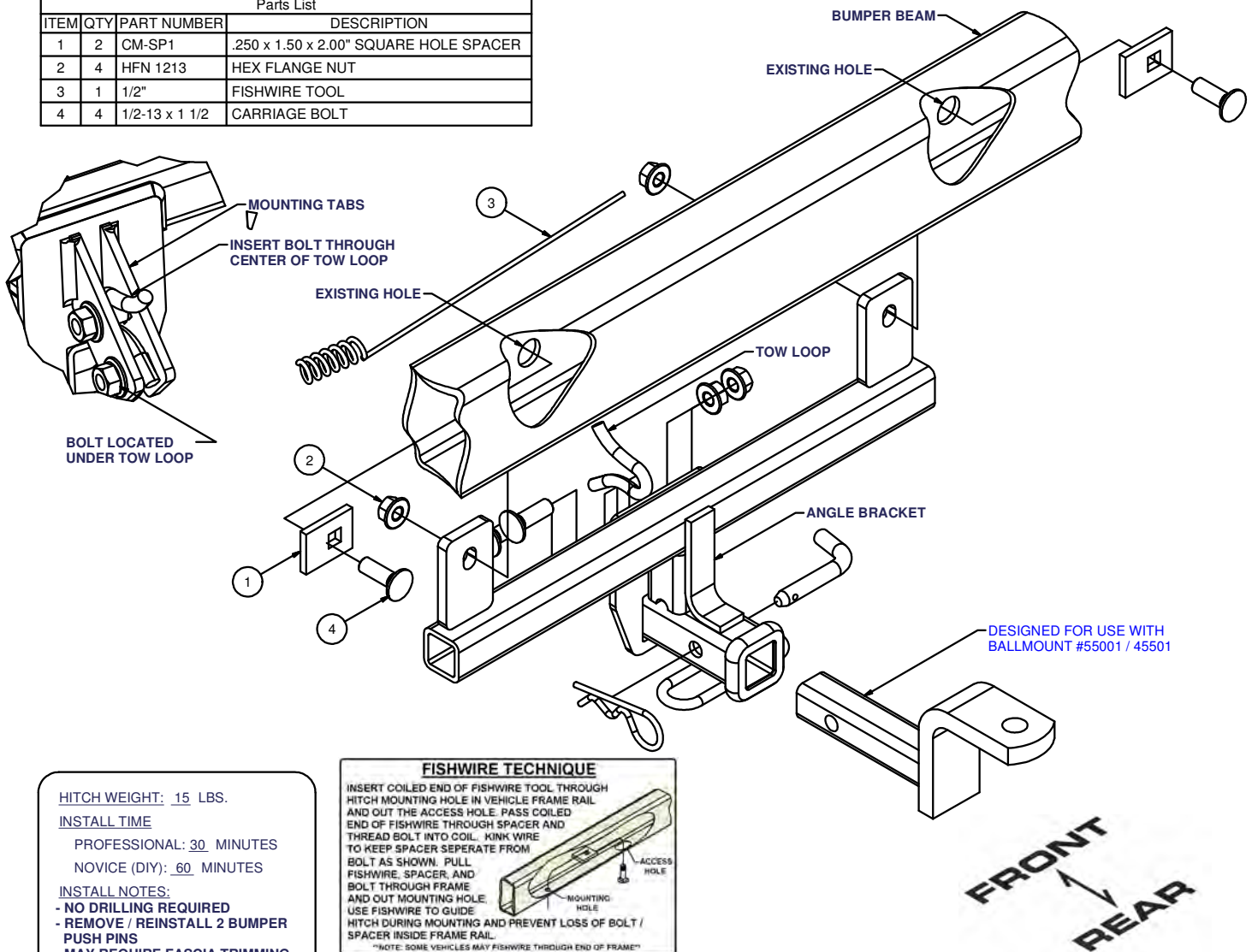
*****DO NOT EXCEED VEHICLE MANUFACTURER'S RECOMMENDED TOWING CAPACITY.*****

WARNING: ALL NON-TRAILER LOADS APPLIED TO THIS PRODUCT MUST BE SUPPORTED BY 18050 STABILIZING STRAPS.

**** FAILURE TO PROPERLY SUPPORT NON-TRAILER LOADS WILL VOID PRODUCT WARRANTY****

HAVING INSTALLATION QUESTIONS? CALL TECHNICAL SUPPORT AT 1-800-798-0813

| Parts List | | | |
|------------|-----|----------------|--|
| ITEM | QTY | PART NUMBER | DESCRIPTION |
| 1 | 2 | CM-SP1 | .250 x 1.50 x 2.00" SQUARE HOLE SPACER |
| 2 | 4 | HFN 1213 | HEX FLANGE NUT |
| 3 | 1 | 1/2" | FISHWIRE TOOL |
| 4 | 4 | 1/2-13 x 1 1/2 | CARRIAGE BOLT |



HITCH WEIGHT: 15 LBS.

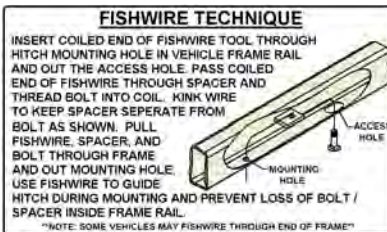
INSTALL TIME

PROFESSIONAL: 30 MINUTES

NOVICE (DIY): 60 MINUTES

INSTALL NOTES:

- NO DRILLING REQUIRED
- REMOVE / REINSTALL 2 BUMPER PUSH PINS
- MAY REQUIRE FASCIA TRIMMING



INSTALLATION STEPS

1. Remove (2) pins to separate bumper fascia away from bumper fascia tabs.
2. Pull bumper fascia away and raise hitch into position. Hang the hitch from tow loop by inserting carriage bolts through hitch mounting tabs and tow loop. Secure with flange nuts as shown.
2. Fishwire carriage bolts and spacers from end of bumper beam on both sides, through existing holes and hitch. Secure hitch with flange nuts as shown.
3. Torque all 1/2" fasteners to 110 ft-lbs.
4. Reinstall bumper fascia pins removed in Step 1. Lower fascia trimming may be required for angle bracket clearance.

PERIODICALLY CHECK THIS RECEIVER HITCH TO ENSURE THAT ALL FASTENERS ARE TIGHT AND THAT ALL STRUCTURAL COMPONENTS ARE SOUND.

Curt Manufacturing Inc., warrants this product to be free of defects in material and/or workmanship at the time of retail purchase by the original purchaser. If the product is found to be defective, Curt Manufacturing Inc., may repair or replace the product, at their option, when the product is returned, prepaid, with proof of purchase. Alteration to, misuse of, or improper installation of this product voids the warranty. Curt Manufacturing Inc.'s liability is limited to repair or replacement of products found to be defective, and specifically excludes liability for incidental or consequential loss or damage.