

**11528**89-91 DODGE COLT / 89-92 EAGLE SUMMIT /  
92-98 MITSUBISHI MIRAGE SEDAN

12/17/2012

GROSS LOAD CAPACITY WHEN USED AS A WEIGHT CARRYING HITCH: 1,000 LBS. TRAILER WEIGHT &amp; 100 LBS. TONGUE WEIGHT.

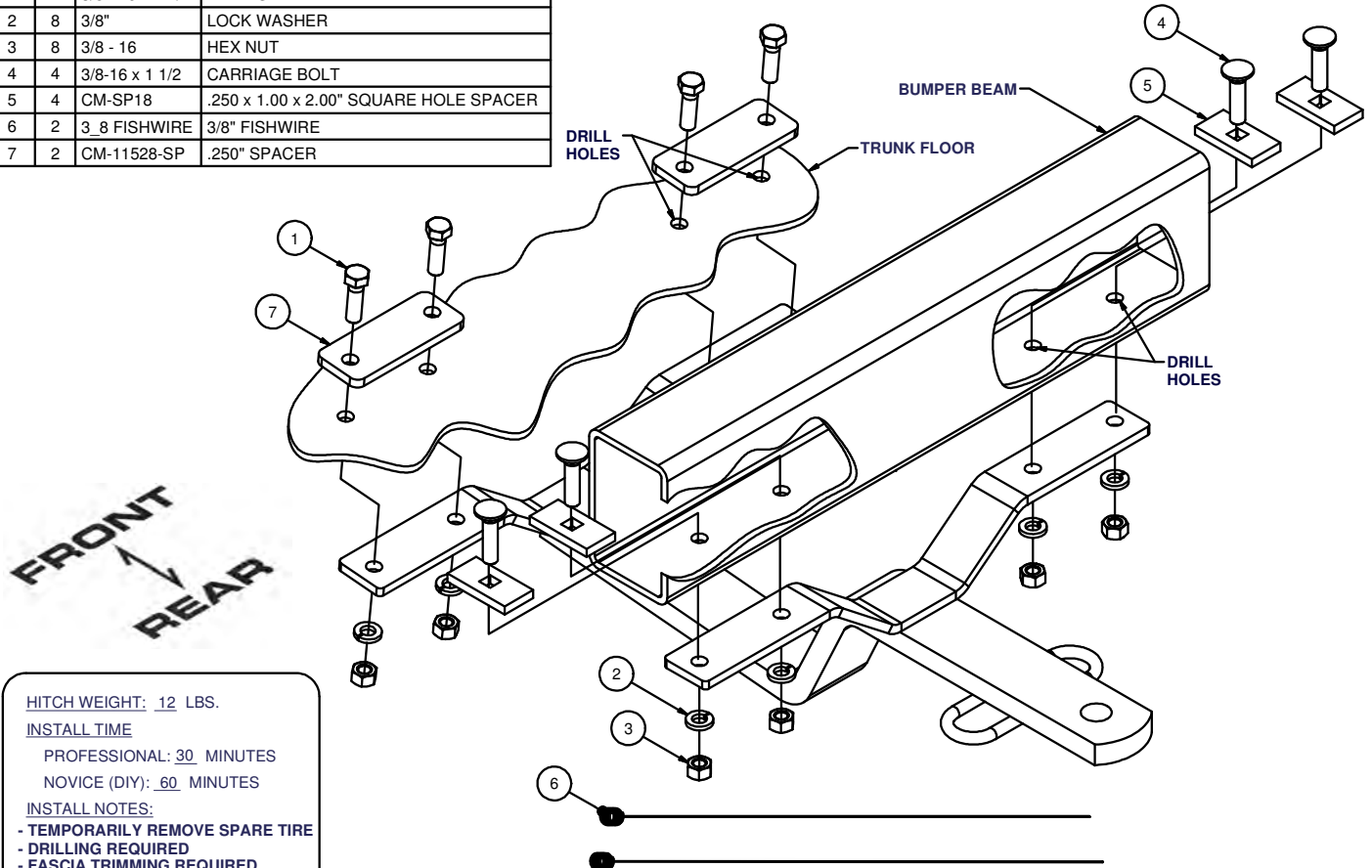
**\*\*\*DO NOT EXCEED VEHICLE MANUFACTURER'S RECOMMENDED TOWING CAPACITY.\*\*\***

WARNING: ALL NON-TRAILER LOADS APPLIED TO THIS PRODUCT MUST BE SUPPORTED BY 18050 STABILIZING STRAPS.

**\*\* FAILURE TO PROPERLY SUPPORT NON-TRAILER LOADS WILL VOID PRODUCT WARRANTY\*\***

HAVING INSTALLATION QUESTIONS? CALL TECHNICAL SUPPORT AT 1-800-798-0813

Parts List			
ITEM	QTY	PART NUMBER	DESCRIPTION
1	4	3/8 - 16 x 1 1/4	HEX BOLT
2	8	3/8"	LOCK WASHER
3	8	3/8 - 16	HEX NUT
4	4	3/8-16 x 1 1/2	CARRIAGE BOLT
5	4	CM-SP18	.250 x 1.00 x 2.00" SQUARE HOLE SPACER
6	2	3_8 FISHWIRE	3/8" FISHWIRE
7	2	CM-11528-SP	.250" SPACER



HITCH WEIGHT: 12 LBS.

**INSTALL TIME**

PROFESSIONAL: 30 MINUTES

NOVICE (DIY): 60 MINUTES

**INSTALL NOTES:**

- TEMPORARILY REMOVE SPARE TIRE
- DRILLING REQUIRED
- FASCIA TRIMMING REQUIRED
- SILICONE FASTENERS

**INSTALLATION STEPS**

1. Clear the spare tire well for drilling. Locate the center line of the vehicle and cut away rear bumper fascia at the bottom, to clear hitch bumper bracket. Mark the steel bumper beam and spare tire well for all fasteners.
2. Centerpunch for holes and drill bumper holes 7/16" diameter, and 13/32" diameter holes in the spare tire well.
3. Install (4) 3/8" x 1 1/2" carriage bolts and square hole spacers in bumper from inside the bumper using existing access holes. Access holes may need to be drilled to fishwire bolts into position.
4. Carefully place hitch over bolts and secure as shown.
5. Fasten hitch to tire well as shown. Make certain CM-11528-SP plates are installed on inside of tire well.
6. Use silicone caulk to seal fasteners installed in trunk to keep water and exhaust fumes from entering vehicle.
7. Torque all 3/8" fasteners to 45 lb-ft.
8. Reinstall spare tire and trunk contents.

**PERIODICALLY CHECK THIS RECEIVER HITCH TO ENSURE THAT ALL FASTENERS ARE TIGHT AND THAT ALL STRUCTURAL COMPONENTS ARE SOUND.**

Curt Manufacturing Inc., warrants this product to be free of defects in material and/or workmanship at the time of retail purchase by the original purchaser. If the product is found to be defective, Curt Manufacturing Inc., may repair or replace the product, at their option, when the product is returned, prepaid, with proof of purchase. Alteration to, misuse of, or improper installation of this product voids the warranty. Curt Manufacturing Inc.'s liability is limited to repair or replacement of products found to be defective, and specifically excludes liability for incidental or consequential loss or damage.