

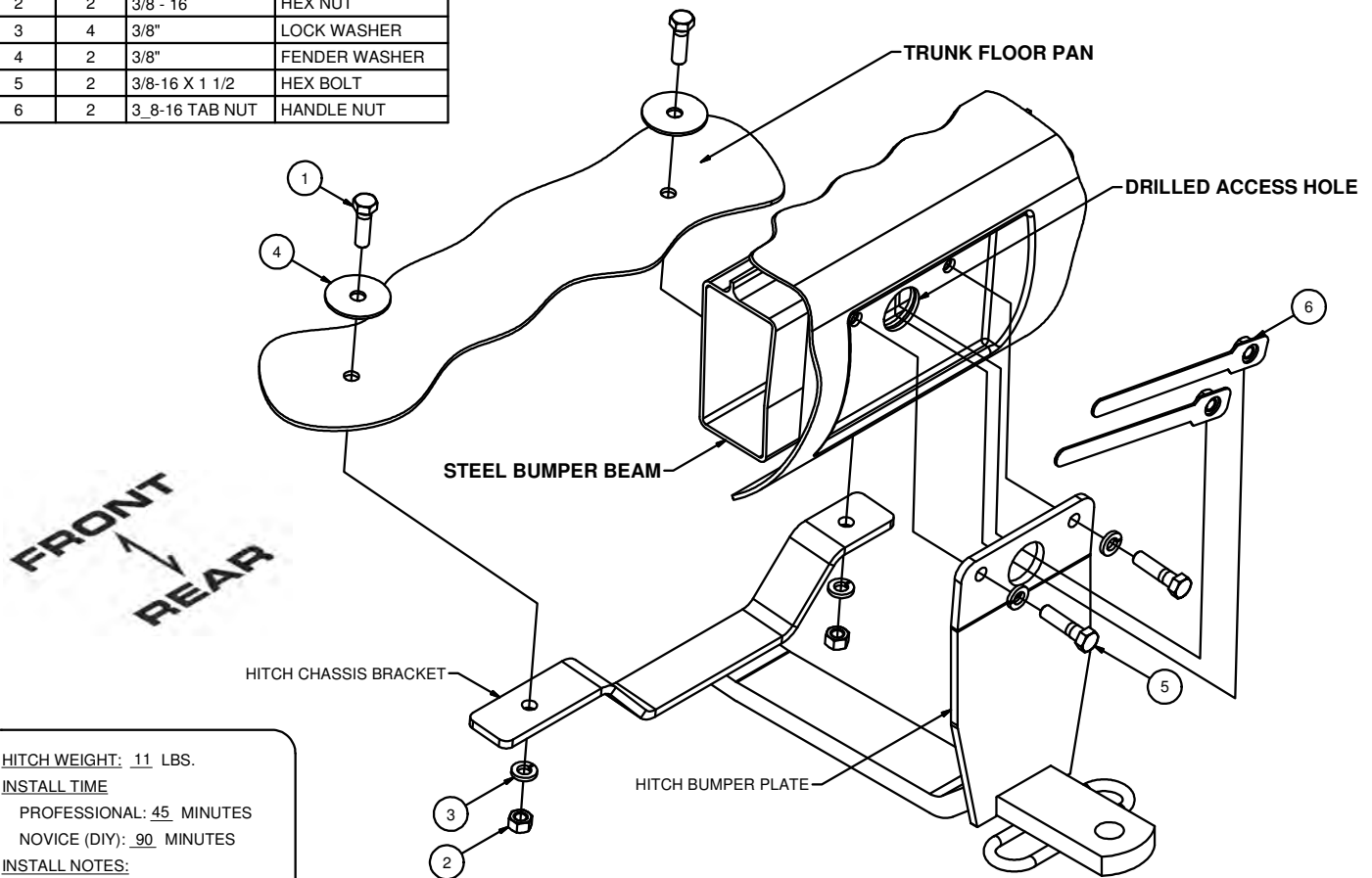
11544**1991-1993 NISSAN NX 1600 AND 2000 COUPE**

12/10/2012

GROSS LOAD CAPACITY WHEN USED AS A WEIGHT CARRYING HITCH: 1,500 LBS. TRAILER WEIGHT & 150 LBS. TONGUE WEIGHT.

*****DO NOT EXCEED VEHICLE MANUFACTURER'S RECOMMENDED TOWING CAPACITY.*******WARNING: ALL NON-TRAILER LOADS APPLIED TO THIS PRODUCT MUST BE SUPPORTED BY AUXILIARY STABILIZING STRAPS.****** FAILURE TO PROPERLY SUPPORT NON-TRAILER LOADS WILL VOID PRODUCT WARRANTY******HAVING INSTALLATION QUESTIONS? CALL TECHNICAL SUPPORT AT 1-800-798-0813**

| Parts List | | | |
|------------|-----|------------------|---------------|
| ITEM | QTY | PART NUMBER | DESCRIPTION |
| 1 | 2 | 3/8 - 16 x 1 1/4 | HEX BOLT |
| 2 | 2 | 3/8 - 16 | HEX NUT |
| 3 | 4 | 3/8" | LOCK WASHER |
| 4 | 2 | 3/8" | FENDER WASHER |
| 5 | 2 | 3/8-16 X 1 1/2 | HEX BOLT |
| 6 | 2 | 3_8-16 TAB NUT | HANDLE NUT |



HITCH WEIGHT: 11 LBS.

INSTALL TIME

PROFESSIONAL: 45 MINUTES

NOVICE (DIY): 90 MINUTES

INSTALL NOTES:

- DRILLING REQUIRED

INSTALLATION STEPS

1. Remove the rear license plate. The hitch bumper plate will bolt to the car's rear bumper beam (steel) in the license plate recess. The hitch chassis bracket bolts to the car's floor pan. Be certain to clear the interior of the car before drilling the floor pan.
2. Note how the hitch fits the car in the diagram. Locate the hitch on the car centered, square and level. Mark, center punch and drill the car's bumper beam and floor pan for 3/8" diameter screws using the hitch as a template. Also mark the bumper beam for single large access hole at the top of the hitch bumper plate.
3. Using a hole saw or equivalent, drill a 1-1/4" diameter access hole in the bumper beam matching the hole in in the bumper plate. These holes are clearance to place handle nuts inside the bumper beam.
4. Use fasteners called out in the diagram to mount the hitch. Place fasteners as shown with handle nuts placed inside the bumper through drilled access hole. The handles can be bent as necessary to allow nuts to engage the screws. Fasten the hitch at floor pan as shown making sure to use fender washers inside trunk pan; opposite the hitch.
5. Torque all 3/8" hardware to 45 ft-lbs.

PERIODICALLY CHECK THIS RECEIVER HITCH TO ENSURE THAT ALL FASTENERS ARE TIGHT AND THAT ALL STRUCTURAL COMPONENTS ARE SOUND.

Curt Manufacturing Inc., warrants this product to be free of defects in material and/or workmanship at the time of retail purchase by the original purchaser. If the product is found to be defective, Curt Manufacturing Inc., may repair or replace the product, at their option, when the product is returned, prepaid, with proof of purchase. Alteration to, misuse of, or improper installation of this product voids the warranty. Curt Manufacturing Inc.'s liability is limited to repair or replacement of products found to be defective, and specifically excludes liability for incidental or consequential loss or damage.