

13011**1984-1990 FORD BRONCO II**

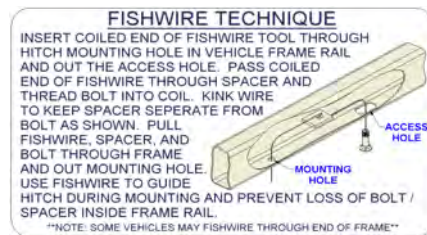
11/12/2012

GROSS LOAD CAPACITY WHEN USED AS A WEIGHT CARRYING HITCH: 3500 LBS. TRAILER WEIGHT & 350 LBS. TONGUE WEIGHT.
 GROSS LOAD CAPACITY WHEN USED AS A WEIGHT DISTRIBUTION HITCH: 5000 LBS. TRAILER WEIGHT & 500 LBS. TONGUE WEIGHT

*****DO NOT EXCEED VEHICLE MANUFACTURER'S RECOMMENDED TOWING CAPACITY.*****

HAVING INSTALLATION QUESTIONS? CALL TECHNICAL SUPPORT AT 1-800-798-0813

Parts List			
ITEM	QTY	PART NUMBER	DESCRIPTION
1	2	7/16-14 x 1 1/2	HEX BOLT
2	2	7/16"	CONICAL TOOTHED WASHER
3	2	7/16 WASHER	WASHER
4	2	7/16-14	HEX NUT
5	4	1/2-13 x 1 3/4	CARRIAGE BOLT
6	4	CM-SP12	.250 x 1.00 x 2.00" SQUARE HOLE SPACER
7	4	HFN 1213	HEX FLANGE NUT
8	1	1_2 FISHWIRE	1/2" FISHWIRE



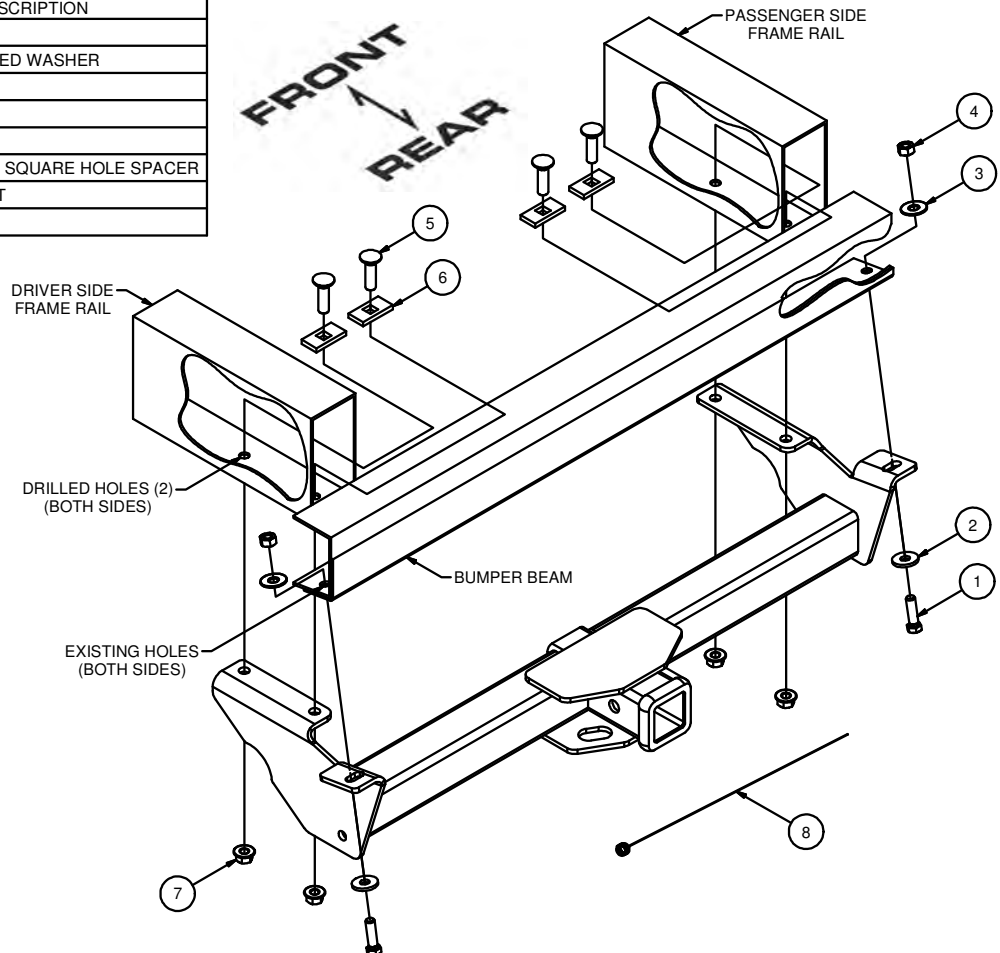
TOOLS REQUIRED	
RATCHET WRENCH	
3/4" SOCKET	
1/2" SOCKET	
15mm SOCKET	
DRILL	
17/32" DRILL BIT	
TORQUE WRENCH	

HITCH WEIGHT: 33 LBS.

INSTALL TIME: 30 MINUTES

INSTALL NOTES:

- DRILLING REQUIRED
- FISHWIRE HARDWARE
- RUB STRIP TRIMMING MAY BE REQUIRED

**INSTALLATION STEPS**

1. On some models remove the two bottom bolts from the bumper located 3" outward where the frame connects into the bumper. Return bolts to vehicle owner. (Note: Some models have an open bolt hole.)
2. On vehicles with rub strip, trim the rub strip at the bottom of the bumper where the hitch comes in contact. (Note: hitch must make direct contact with bumper when installed.)
3. Raise the hitch into position and center on vehicle, loosely secure hitch to the bumper using the 7/16" hardware as shown.
4. Using the hitch as a template mark and drill (4) 17/32" holes through the frame rails.
5. Fishwire a 1/2" carriage bolt and CM-SP12 spacer into each hole drilled in Step 4. (See Fishwire Technique)
6. Secure the hitch to the frames using (4) 1/2" hex flange bolts as shown.
7. Torque all 1/2" hardware to 110 ft-lbs and 7/16" hardware to 70 ft-lbs.

PERIODICALLY CHECK THIS RECEIVER HITCH TO ENSURE THAT ALL FASTENERS ARE TIGHT AND THAT ALL STRUCTURAL COMPONENTS ARE SOUND.

Curt Manufacturing Inc., warrants this product to be free of defects in material and/or workmanship at the time of retail purchase by the original purchaser. If the product is found to be defective, Curt Manufacturing Inc., may repair or replace the product, at their option, when the product is returned, prepaid, with proof of purchase. Alteration to, misuse of, or improper installation of this product voids the warranty. Curt Manufacturing Inc.'s liability is limited to repair or replacement of products found to be defective, and specifically excludes liability for incidental or consequential loss or damage.