



# 13057 INSTALLATION INSTRUCTIONS



Safety glasses should be worn at all times while installing this product.

YEARS: 2009-PRESENT

MAKE: AUDI

MODEL: Q5

STYLE: CROSSOVER

**WARNING: NEVER EXCEED YOUR VEHICLE MANUFACTURER'S RECOMMENDED TOWING CAPACITY**

**WEIGHT CARRYING:**  
TRAILER WEIGHT: 4,000 LBS.  
TONGUE WEIGHT: 400 LBS.

**WARNING:**  
WE RECOMMEND THE USE OF 18050 STABILIZING STRAPS FOR ALL NON-TRAILER (WHEEL-LESS) LOADS. PLEASE SEE THE CURT CATALOG OR VISIT US ONLINE AT [WWW.CURTMFG.COM](http://WWW.CURTMFG.COM) FOR FURTHER INFORMATION.

**INSTALLATION TIME: 120 MIN.**

THE INSTALL TIME LISTED IS FOR PROFESSIONAL INSTALLERS. IF YOU ARE HESITANT TO UNDERTAKE THIS TASK ON YOUR OWN, CONTACT AN AUTHORIZED CURT INSTALLER FOR ADDITIONAL ASSISTANCE.

### INSTALLATION TIPS:

- BEFORE YOU BEGIN INSTALLATION, READ ALL INSTRUCTIONS THOROUGHLY.
- TO EASE INSTALLATION, 2 PEOPLE MAY BE REQUIRED.
- USING PROPER TOOLS WILL GREATLY IMPROVE THE QUALITY OF THE INSTALL AND REDUCE THE TIME REQUIRED.
- NEED HELP OR HAVE SOME QUESTIONS? CALL TECHNICAL SUPPORT AT 800.798.0813

### VEHICLE PHOTO:



REPRESENTATIVE PHOTO

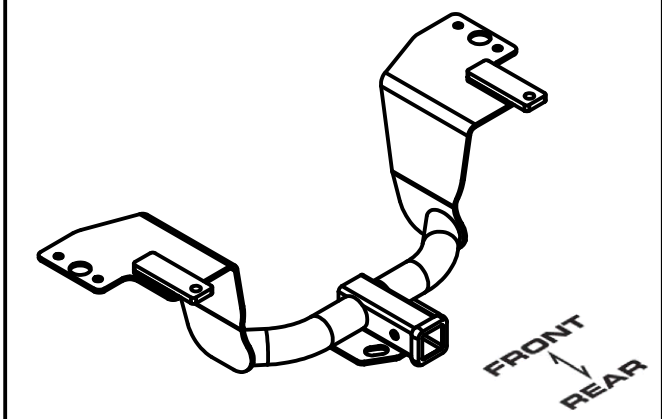
### INSTALLATION REQUIRES:

RATCHET	TORQUE WRENCH	9" SOCKET EXTENSION
13mm 10mm 3/4" SOCKET	T-25 TORXBIT SOCKET	POWER DRILL
DRILL BIT 17/32"	CENTER PUNCH	DIE GRINDER
AVIATION SHEARS	SAFETY GLASSES	MASKING TAPE

### LEVEL OF DIFFICULTY: HARD

EASY	MODERATE	HARD
	- LOWER EXHAUST	
	- DRILLING REQUIRED	
	- FISHWIRE	
	- REVERSE FISHWIRE	
	- HEAT SHIELD TRIMMING	

### HITCH ILLUSTRATION:



MAKE SURE YOUR HITCH MATCHES

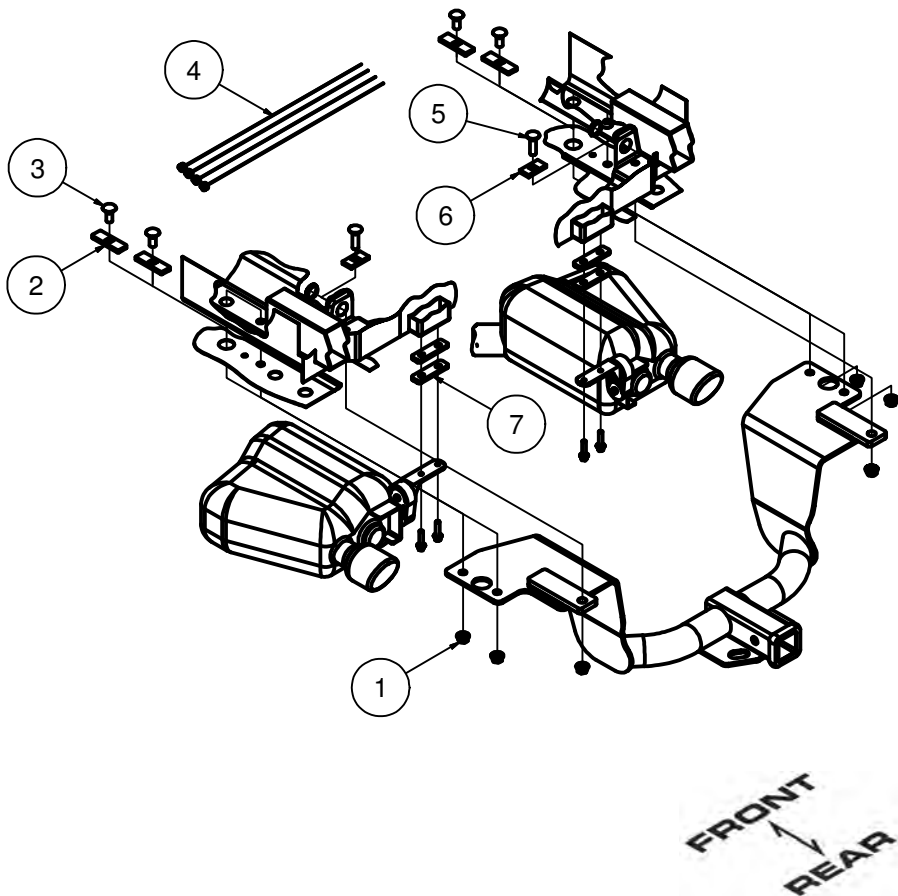
**PERIODICALLY CHECK THIS RECEIVER HITCH TO ENSURE ALL FASTENERS ARE TIGHT AND ALL STRUCTURAL COMPONENTS ARE SOUND**

CURT Manufacturing Inc. warrants this product to be free of defects in material and/or workmanship at the time of retail purchase by the original purchaser. If the product is found to be defective, Curt Manufacturing Inc. may repair or replace the product at their option, when the product is returned, prepaid, with proof of purchase. Alteration to, misuse of, or improper installation of this product voids the warranty. Curt Manufacturing Inc.'s liability is limited to repair or replacement of products found to be defective, and specifically excludes liability for incidental or consequential loss or damage.

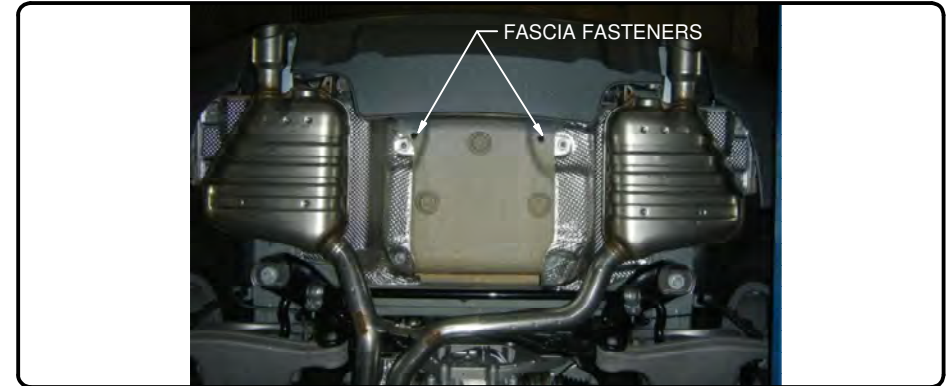
For more information log onto [www.curtmfg.com](http://www.curtmfg.com), & for helpful towing tips log onto [www.hitchinfo.com](http://www.hitchinfo.com)

## INSTALLATION WALKTHROUGH:

Parts List			
ITEM	QTY	PART NUMBER	DESCRIPTION
1	6	HFN 1213	HEX FLANGE NUT
2	4	CM-SP6	.250 x 1.00 x 3.00" SQUARE HOLE SPACER
3	4	1/2-13 x 1 1/4	CARRIAGE BOLT
4	4	1_2 FISHWIRE	1/2" FISHWIRE
5	2	1/2-13 x 1 3/4	CARRIAGE BOLT
6	2	CM-SP12	.250 x 1.00 x 2.00" SQUARE HOLE SPACER
7	4	CM-13057-ES	.250" EXHAUST SPACER



1. Remove the (2) rear most fascia fasteners. Retain fasteners they will be reinstalled later.



2. Remove fasteners from the rear most exhaust brackets and rubber hangers toward the center of the vehicle. Lower exhaust and support as needed to prevent damage. **NOTE: You may need to gently flex rear fascia to raise and lower exhaust.**



### RUBBER ISOLATOR REMOVAL DIAGRAM

This technique can be used if an Exhaust Hanger Removal Pliers is not available.

Using a 5/8" open end wrench, slide the wrench up to the rubber isolator, cradling the hanger rod as shown. Next place the flat edge of a pry bar between the wrench and the hanger stop or hanger rod. Then simply rotate the pry bar toward the wrench to remove the rubber isolator.

Note: Using a spray lubricant or soapy water on the hanger rod and the rubber isolator helps removal.

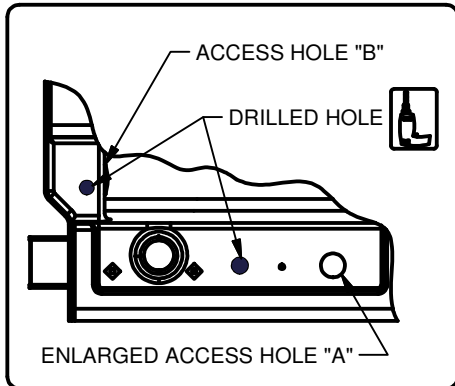
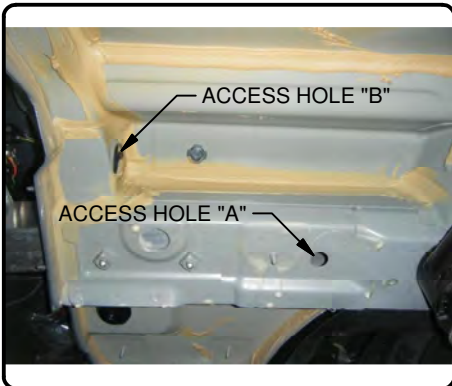


## INSTALLATION WALKTHROUGH:

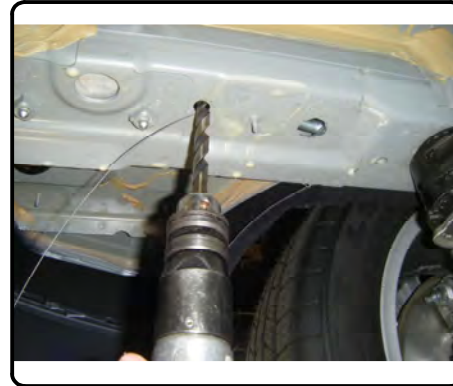
3. Remove heat shields from the driver and passenger sides.



4. Raise hitch into position aligning access hole "A" in frame rails. When hole is aligned and hitch is centered and square on vehicle, mark drill holes with center punch in frame rails and in cross member.



5. Drill holes in frame marked in Step (4) using 17/32" drill bit.



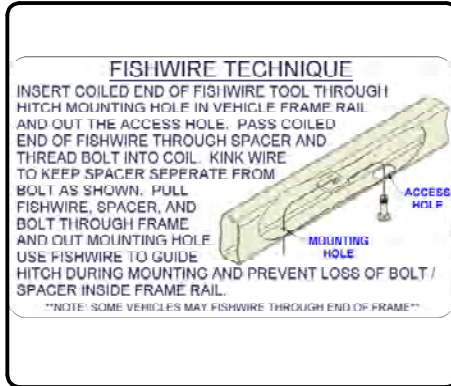
6. Enlarge access hole "A" in frame rails to allow 1/2-13 carriage bolts and SP6 spacers to pass through.



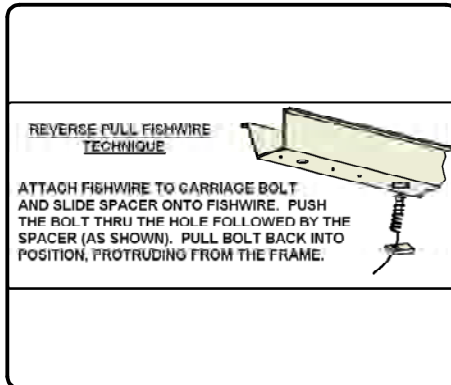


## INSTALLATION WALKTHROUGH:

7. Fishwire 1/2-13 x 1 1/4" carriage bolts and SP6 spacers through enlarged access hole "A" and out the hole drilled in the frame rail, both sides.



8. Reverse Fishwire 1/2-13 x 1 1/4" carriage bolts and SP6 spacers through enlarged access hole "A", both sides.



9. Remove hole plug from access hole "B" in cross members. **NOTE: Hole plug maybe covered with under coating and not easily visible. Cross member maybe filled with foam, foam will need to be removed to allow spacer to sit flat in cross member. Remove foam using a flat blade screw driver.**

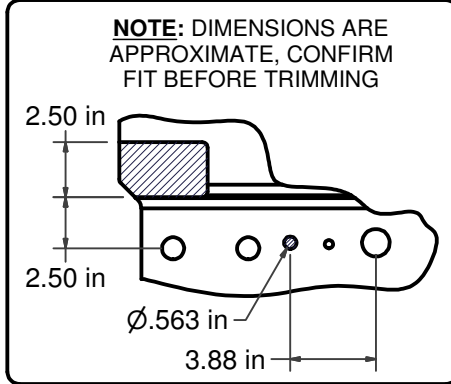
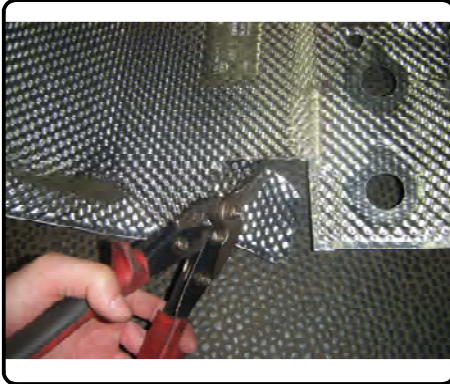


10. Fishwire 1/2-13 x 1 1/4" carriage bolts and SP6 spacers through enlarged access hole "A", both sides.



## INSTALLATION WALKTHROUGH:

11. Mark heat shield for trimming and confirm fit. Trim heat shield using tin snips and reattach.



12. Raise hitch into position and secure the side plates with 1/2" flange nuts, both sides. Remove fishwires from the bolts in the cross members and secure with 1/2" flange nuts.



13. Torque all 1/2" hardware to 75 ft-lbs. Raise exhaust and sandwich the .250" exhaust spacers between the exhaust brackets and exhaust mounting tabs. Secure using existing fasteners removed in Step (2).



14. Reinstall rear fascia with fasteners removed in Step (1). Installation is complete.



GROSS LOAD CAPACITY WHEN USED AS A WEIGHT CARRYING HITCH: 4,000 LBS. TRAILER WEIGHT & 400 LBS. TONGUE WEIGHT.

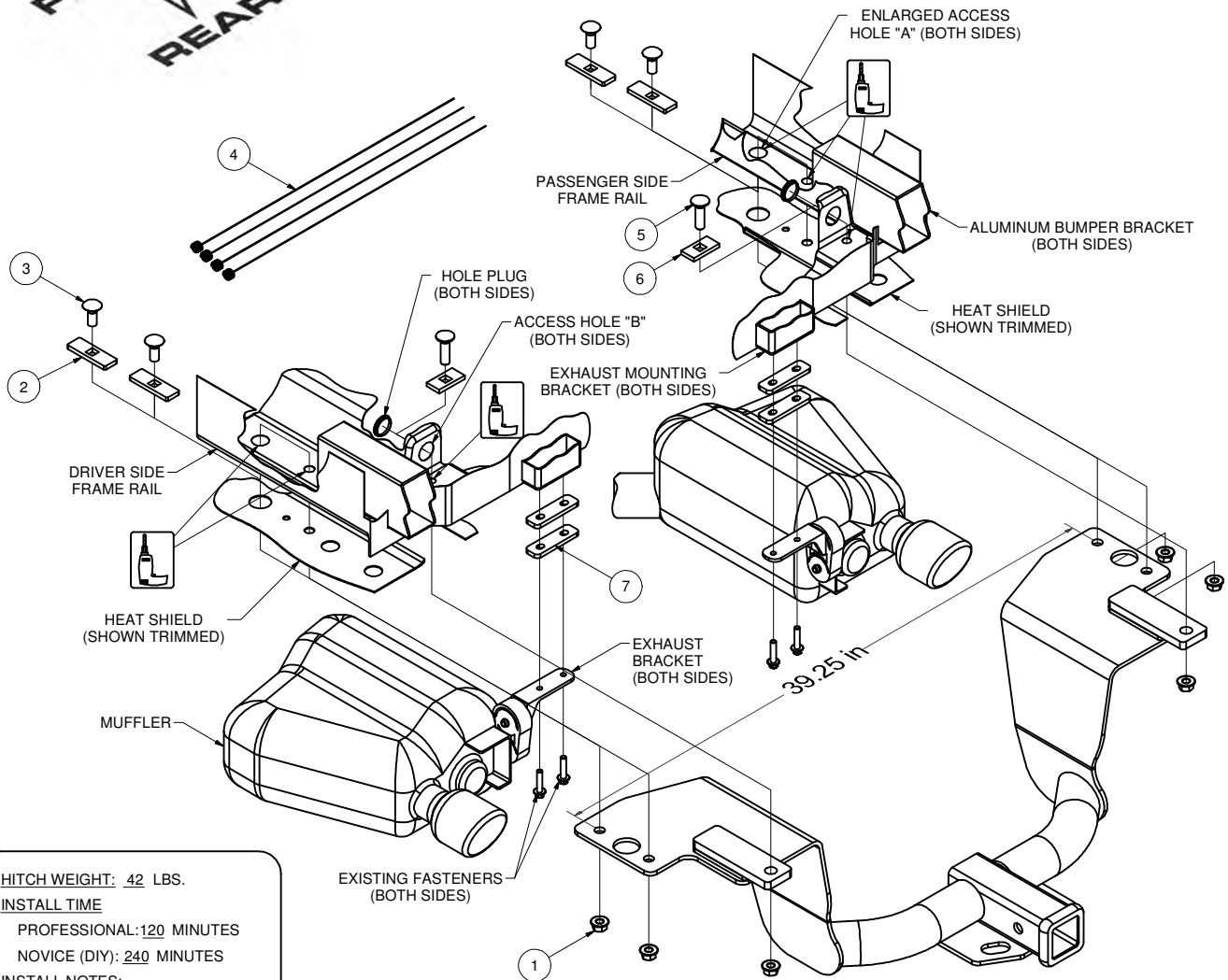
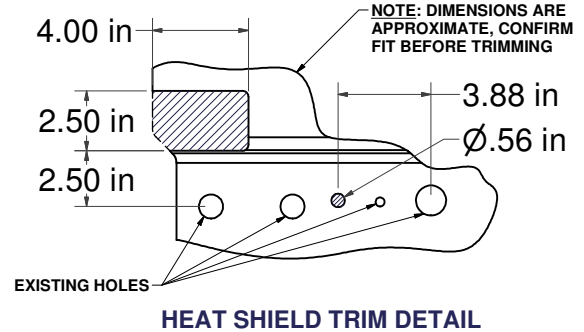
\*\*\*DO NOT EXCEED VEHICLE MANUFACTURER'S RECOMMENDED TOWING CAPACITY.\*\*\*

WARNING: ALL NON-TRAILER LOADS APPLIED TO THIS PRODUCT MUST BE SUPPORTED BY AUXILIARY STABILIZING STRAPS.

\*\* FAILURE TO PROPERLY SUPPORT NON-TRAILER LOADS WILL VOID PRODUCT WARRANTY\*\*

HAVING INSTALLATION QUESTIONS? CALL TECHNICAL SUPPORT AT 1-800-798-0813

Parts List			
ITEM	QTY	PART NUMBER	DESCRIPTION
1	6	HFN 1213	HEX FLANGE NUT
2	4	CM-SP6	.250 x 1.00 x 3.00" SQUARE HOLE SPACER
3	4	1/2-13 x 1 1/4	CARRIAGE BOLT
4	4	1_2 FISHWIRE	1/2" FISHWIRE
5	2	1/2-13 x 1 3/4	CARRIAGE BOLT
6	2	CM-SP12	.250 x 1.00 x 2.00" SQUARE HOLE SPACER
7	4	CM-13057-ES	.250" EXHAUST SPACER



HITCH WEIGHT: 42 LBS.  
 INSTALL TIME  
 PROFESSIONAL: 120 MINUTES  
 NOVICE (DIY): 240 MINUTES  
 INSTALL NOTES:  
 - DRILLING REQUIRED  
 - LOWER EXHAUST  
 - FISHWIRE HARDWARE  
 - TRIM HEAT SHIELD

**PERIODICALLY CHECK THIS RECEIVER HITCH TO ENSURE THAT ALL FASTENERS ARE TIGHT AND THAT ALL STRUCTURAL COMPONENTS ARE SOUND.**

Curt Manufacturing Inc., warrants this product to be free of defects in material and/or workmanship at the time of retail purchase by the original purchaser. If the product is found to be defective, Curt Manufacturing Inc., may repair or replace the product, at their option, when the product is returned, prepaid, with proof of purchase. Alteration to, misuse of, or improper installation of this product voids the warranty. Curt Manufacturing Inc.'s liability is limited to repair or replacement of products found to be defective, and specifically excludes liability for incidental or consequential loss or damage.



GROSS LOAD CAPACITY WHEN USED AS A WEIGHT CARRYING HITCH: 4,000 LBS. TRAILER WEIGHT & 400 LBS. TONGUE WEIGHT.

\*\*\*DO NOT EXCEED VEHICLE MANUFACTURER'S RECOMMENDED TOWING CAPACITY.\*\*\*

WARNING: ALL NON-TRAILER LOADS APPLIED TO THIS PRODUCT MUST BE SUPPORTED BY AUXILIARY STABILIZING STRAPS.

\*\* FAILURE TO PROPERLY SUPPORT NON-TRAILER LOADS WILL VOID PRODUCT WARRANTY\*\*

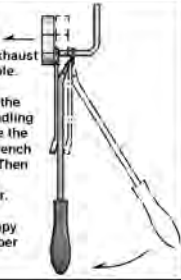
HAVING INSTALLATION QUESTIONS? CALL TECHNICAL SUPPORT AT 1-800-798-0813

#### RUBBER ISOLATOR REMOVAL DIAGRAM

This technique can be used if and Exhaust Hanger Removal Pliers is not available.

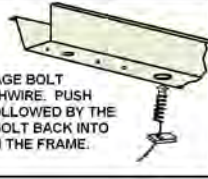
Using a 5/8" open end wrench, slide the wrench up to the rubber isolator, cradling the hanger rod as shown. Next place the flat edge of a pry bar between the wrench and the hanger stop or hanger rod. Then simply rotate the pry bar toward the wrench to remove the rubber isolator.

Note: Using a spray lubricant or soapy water on the hanger rod and the rubber isolator helps removal.



#### REVERSE PULL FISHWIRE TECHNIQUE

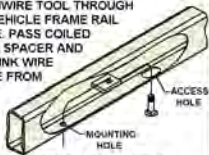
ATTACH FISHWIRE TO CARRIAGE BOLT AND SLIDE SPACER ONTO FISHWIRE. PUSH THE BOLT THRU THE HOLE FOLLOWED BY THE SPACER (AS SHOWN). PULL BOLT BACK INTO POSITION. PROTRUDING FROM THE FRAME.



#### FISHWIRE TECHNIQUE

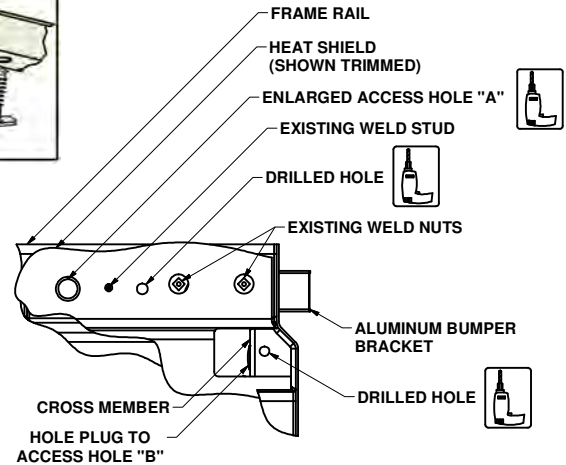
INSERT COILED END OF FISHWIRE TOOL THROUGH HITCH MOUNTING HOLE IN VEHICLE FRAME RAIL AND OUT THE ACCESS HOLE. PASS COILED END OF FISHWIRE THROUGH SPACER AND THREAD BOLT INTO COIL. KINK WIRE TO KEEP SPACER SEPARATE FROM BOLT AS SHOWN. PULL FISHWIRE, SPACER, AND BOLT THROUGH FRAME AND OUT MOUNTING HOLE. USE FISHWIRE TO GUIDE HITCH DURING MOUNTING AND PREVENT LOSS OF BOLT / SPACER INSIDE FRAME RAIL.

\*NOTE: SOME VEHICLES MAY FISHWIRE THROUGH END OF FRAME\*



#### TOOLS REQUIRED

RATCHET
TORQUE WRENCH
RATCHET EXTENSION
T-25 TORX
DRILL
TIN SNIPS
CENTER PUNCH
13mm SOCKET
10mm SOCKET
3/4" SOCKET
17/32" DRILL BIT



DRILL DETAIL (BOTH SIDES)

## INSTALLATION STEPS

1. Remove the (2) rear most fascia fasteners. Retain fasteners they will be reinstalled later.
2. Remove fasteners from the rear most exhaust brackets and lower exhaust, support as needed to prevent damage. (SEE RUBBER ISOLATOR REMOVAL DIAGRAM) **NOTE: You may need to gently flex rear fascia to raise and lower exhaust.**
3. Remove heat shields from the driver and passenger side.
4. Raise hitch into position aligning access hole "A" in frame rails. When hole is aligned and hitch is centered and square on vehicle, mark drill holes with center punch in frame rails and in cross member. (SEE DRILL DETAIL)
5. Drill holes in frame marked in Step (4) using 17/32" drill bit.
6. Enlarge access hole "A" in frame rails to allow 1/2-13 carriage bolts and CM-SP6 spacers to pass through.
7. Fishwire 1/2-13 X 1 1/4" carriage bolts and SP6 spacers through enlarged access hole "A" and out the hole drilled in the frame rail, both sides. (SEE FISHWIRE TECHNIQUE)
8. Reverse fishwire 1/2-13 X 1 1/4" carriage bolts and SP6 spacers through enlarged access hole "A", both sides. (SEE REVERSE FISHWIRE TECHNIQUES)
9. Remove hole plug from access hole "B" in cross members and fishwire 1/2-13 X 1 3/4" carriage bolts and SP12 spacers through access hole "B" and out drilled hole, both sides. (SEE FISHWIRE TECHNIQUES) Replace hole plug after hardware is fishwired. **NOTE: Hole plug maybe covered with under coating and not easily visible. Cross member maybe filled with foam, foam will need to be removed to allow spacer to sit flat in cross member. Remove foam using a flat blade screw driver.**
10. Mark heat shield for trimming and confirm the fit. Trim heat shield using tin snips and reattach. (SEE HEAT SHIELD TRIM DETAIL)
11. Raise hitch into position and secure the side plates with 1/2" flange nuts, both sides. Remove fishwires from the bolts in the cross members and secure with 1/2" flange nuts.
12. Torque all 1/2" hardware to 75 ft-lbs.
13. Raise exhaust and sandwich the .250" exhaust spacers between the exhaust brackets and exhaust mounting tabs. Secure using existing fasteners removed in Step (2).
14. Reinstall rear fascia with fasteners removed in Step (1).

**PERIODICALLY CHECK THIS RECEIVER HITCH TO ENSURE THAT ALL FASTENERS ARE TIGHT AND THAT ALL STRUCTURAL COMPONENTS ARE SOUND.**