

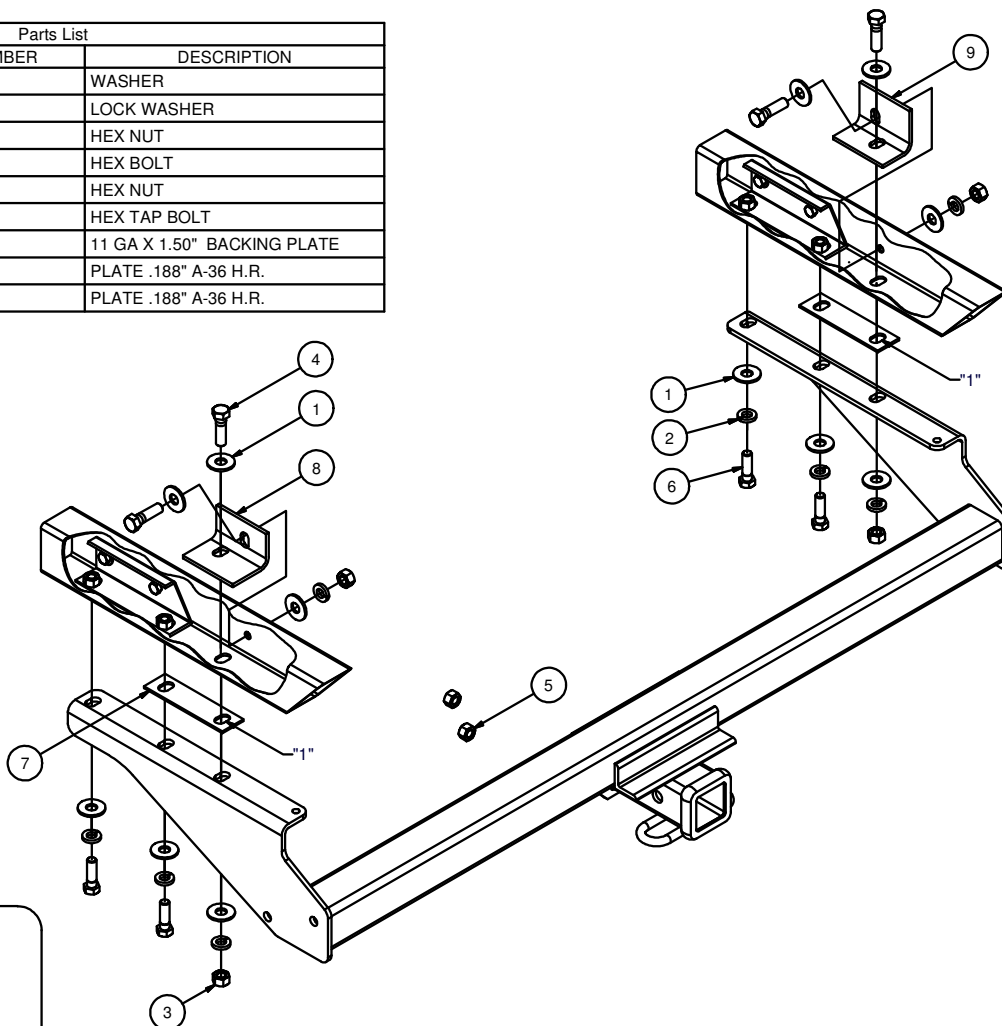
13196 / 757201**93-98 TOYOTA T-100**

10/19/2012

GROSS LOAD CAPACITY WHEN USED AS A WEIGHT CARRYING HITCH: 5,000 LBS. TRAILER WEIGHT & 500 LBS. TONGUE WEIGHT.
 GROSS LOAD CAPACITY WHEN USED AS A WEIGHT DISTRIBUTION HITCH: 5,500 LBS. TRAILER WEIGHT & 500 LBS. TONGUE WEIGHT

*****DO NOT EXCEED VEHICLE MANUFACTURER'S RECOMMENDED TOWING CAPACITY.*****

Parts List			
ITEM	QTY	PART NUMBER	DESCRIPTION
1	12	1/2"	WASHER
2	8	1/2"	LOCK WASHER
3	4	1/2-13	HEX NUT
4	4	1/2-13 x 1 3/4	HEX BOLT
5	2	M12 - 1.25	HEX NUT
6	4	M12 - 1.25 x 40	HEX TAP BOLT
7	2	CM-13196-BP	11 GA X 1.50" BACKING PLATE
8	1	CM-13196-BP2	PLATE .188" A-36 H.R.
9	1	CM-13196-BP3	PLATE .188" A-36 H.R.

HITCH WEIGHT: 47 LBS.INSTALL TIME: 45 MINUTES

INSTALL NOTES:

- NO DRILLING REQUIRED

INSTALLATION STEPS

- 1) For those vehicles equipped with a rear bumper, remove the rearmost fasteners joining the bumper bracket to the vehicle frame rails. (Hole "1" in diagram.)
(Note: Return the fasteners to the vehicle owner for use if the hitch is removed from the vehicle.)
- 2) Install frame reinforcement angles as shown using fasteners called out. Choose correct angle so the holes line up with the holes in the frame plate. Do not final tighten.
- 3) If the vehicle includes existing screws at the two rearmost locations, remove them and return them to the vehicles owner for reinstallation should the hitch ever be removed. These vehicles will include 12mm weld nuts inside the frame rails.
- 4) Position the hitch on the vehicle as shown, placing one spacer plate between each hitch bracket and the bottom of the vehicle frame holes. Mount the hitch using fasteners as shown. Those without weldnuts will have to use additional fasteners provided.
- 5) Torque all 1/2" fasteners to 110 lb-ft, and all 12mm bolts to 86 lb-ft.

PERIODICALLY CHECK THIS RECEIVER HITCH TO ENSURE THAT ALL FASTENERS ARE TIGHT AND THAT ALL STRUCTURAL COMPONENTS ARE SOUND.

Curt Manufacturing Inc., warrants this product to be free of defects in material and/or workmanship at the time of retail purchase by the original purchaser. If the product is found to be defective, Curt Manufacturing Inc., may repair or replace the product, at their option, when the product is returned, prepaid, with proof of purchase. Alteration to, misuse of, or improper installation of this product voids the warranty. Curt Manufacturing Inc.'s liability is limited to repair or replacement of products found to be defective, and specifically excludes liability for incidental or consequential loss or damage.