



YEARS: 2017-PRESENT

MAKE: GMC

MODEL: ACADIA

STYLE: SUV

**WARNING: NEVER EXCEED YOUR VEHICLE MANUFACTURER'S RECOMMENDED TOWING CAPACITY**  
 For more information log onto [www.curtmfg.com](http://www.curtmfg.com) & for helpful towing tips log onto [www.hitchinfo.com](http://www.hitchinfo.com)

**WEIGHT CARRYING:**  
 TRAILER WEIGHT: 5,000 LBS.  
 TONGUE WEIGHT: 750 LBS.

**WEIGHT DISTRIBUTION:**  
 TRAILER WEIGHT: 6,000 LBS.  
 TONGUE WEIGHT: 750 LBS.

**PRO INSTALL TIME: 20 MIN.**  
**NOVICE INSTALL TIME: 40 MIN.**

IF YOU ARE HESITANT TO UNDERTAKE THIS TASK ON YOUR OWN, CONTACT AN AUTHORIZED CURT INSTALLER FOR ADDITIONAL ASSISTANCE.

- INSTALLATION TIPS:**
- BEFORE YOU BEGIN INSTALLATION, READ ALL INSTRUCTIONS THOROUGHLY.
  - TO EASE INSTALLATION, 2 PEOPLE MAY BE REQUIRED.
  - USING PROPER TOOLS WILL GREATLY IMPROVE THE QUALITY OF THE INSTALL AND REDUCE THE TIME REQUIRED.
  - NEED HELP OR HAVE SOME QUESTIONS? CALL TECHNICAL SUPPORT AT 800.798.0813

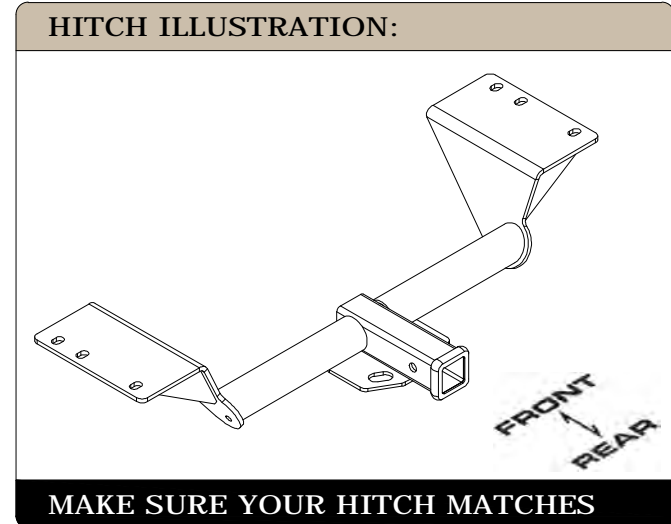


**INSTALLATION REQUIRES:**

RATCHET	TORQUE WRENCH	15mm 11/16" SOCKET
8" SOCKET EXTENSION	PLIERS	UTILITY KNIFE
AVIATION SHEARS	SAFETY GLASSES	

**LEVEL OF DIFFICULTY: EASY**

EASY	MODERATE	CHALLENGING
	-NO DRILLING	
	-FISHWIRE HARDWARE	
	-LOWER EXHAUST	
	-TEMPORARILY REMOVE HEAT SHIELDS	
	-TRIMMING REQUIRED	



SCAN FOR MORE INFO

**PERIODICALLY CHECK THIS RECEIVER HITCH TO ENSURE ALL FASTENERS ARE TIGHT AND ALL STRUCTURAL COMPONENTS ARE SOUND**

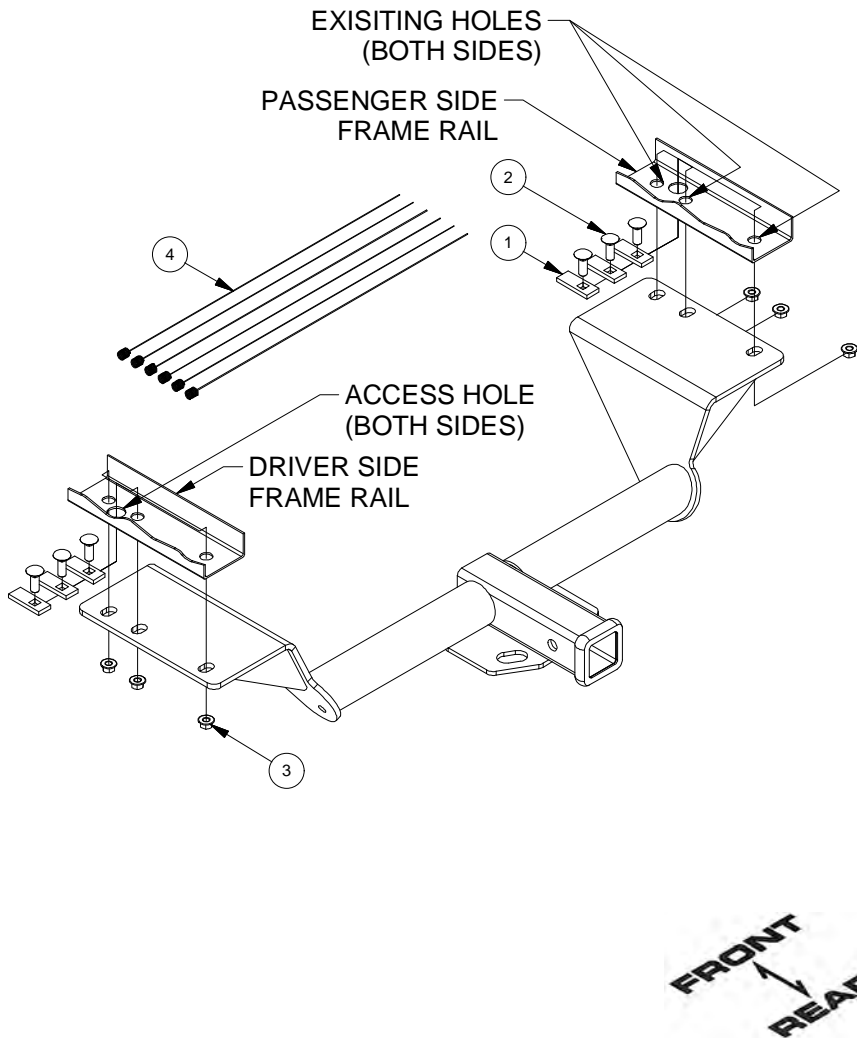
CURT Manufacturing LLC. warrants this product to be free of defects in material and/or workmanship at the time of retail purchase by the original purchaser. If the product is found to be defective, CURT Manufacturing LLC. may repair or replace the product at their option, when the product is returned, prepaid, with proof of purchase. Alteration to, misuse of, or improper installation of this product voids the warranty. CURT Manufacturing LLC.'s liability is limited to repair or replacement of products found to be defective, and specifically excludes liability for incidental or consequential loss or damage.

For more information log onto [www.curtmfg.com](http://www.curtmfg.com) , & for helpful towing tips log onto [www.hitchinfo.com](http://www.hitchinfo.com)

This product complies with safety specifications and requirements for connecting devices and towing systems of the state of New York, V.E.S.C.Regulation V-5 and SAE J684.

# INSTALLATION WALKTHROUGH:

Parts List				
ITEM	QTY	PART NUMBER	DESCRIPTION	
1	6	CM-SP2	.250 x .88 x 2.25" SQUARE HOLE SPACER	
2	6	7/16-14 x 1 1/4	CARRIAGE BOLT	
3	6	7/16-14	HEX FLANGE NUT	
4	6	7_16 FISHWIRE	7/16" FISHWIRE	



1. Lower exhaust by removing (3) rubber isolators as shown in the Rubber Isolator Removal Diagram.  
**NOTE:** Removing rearmost exhaust brackets from vehicle frame using a 15mm socket may ease in lowering exhaust.



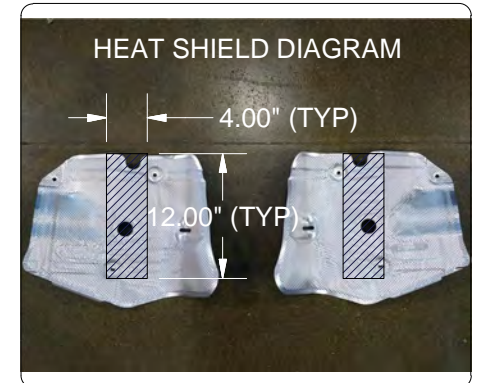
**RUBBER ISOLATOR REMOVAL DIAGRAM**

This technique can be used if an Exhaust Hanger Removal Pliers is not available.

Using a 5/8" open end wrench, slide the wrench up to the rubber isolator, cradling the hanger rod as shown. Next place the flat edge of a pry bar between the wrench and the hanger stop or hanger rod. Then simply rotate the pry bar toward the wrench to remove the rubber isolator.

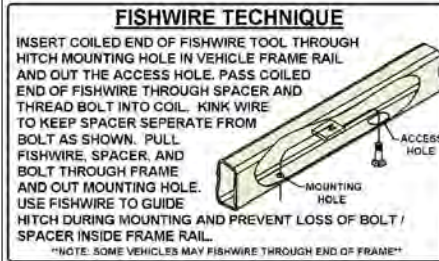
Note: Using a spray lubricant or soapy water on the hanger rod and the rubber isolator helps removal.

2. Remove heat shield by removing (4) speed nuts on each side using needle nose pliers. Trim heat shield as shown in the trim diagram using aviation shears. Reinstall heat shields after trimming.  
**NOTE:** All dimensions are approximate, confirm fit prior to trim.

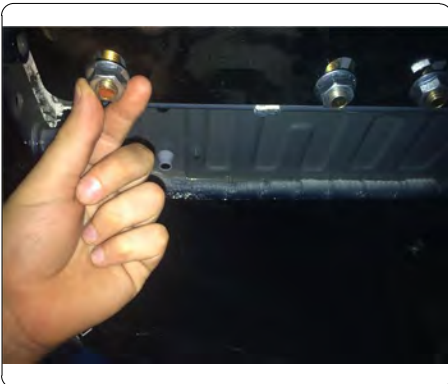


## INSTALLATION WALKTHROUGH:

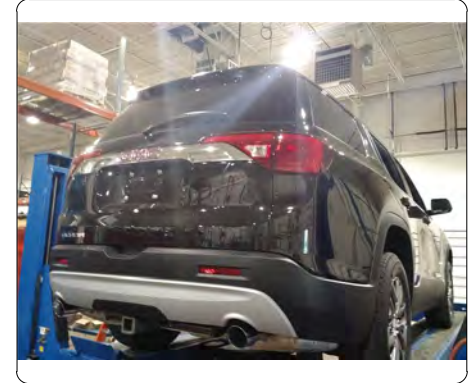
3. Fishwire (3) CM-SP2 spacers and (3) 7/16" carriage bolts through access holes and out mounting holes on each frame rail as shown in the Fishwire Technique Diagram.



4. Using pliers, remove (2) heat shield vehicle studs (1) on each side. Raise hitch into position and secure with (6) 7/16" flange nuts (3) on each side.  
**NOTE:** Scrape away excess caulk using a utility knife for proper installation.



5. Use an 11/16" socket and torque all 7/16" hardware to 70 ft-lbs. Raise exhaust back into position and reinstall rubber isolators removed in Step 1.



INSTALLATION COMPLETE



## TOWING SAFETY INFORMATION

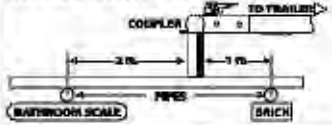
### Gross Trailer Weight / GTW

The Gross Trailer Weight is the weight of the trailer & cargo. Measure this by putting the fully loaded trailer on a vehicle scale.



### Tongue Weight / TW

The downward force that is exerted on the hitch ball by the coupler. The tongue weight will vary depending on where the load is positioned in relationship to the trailer axle(s). To measure the tongue weight, use either a commercial scale or a bathroom scale with the coupler at towing height. When using a bathroom scale with heavier tongue weights, use the method shown and multiply the scale reading by 3.



### Weight Carrying / WC

The total weight of both the trailer and the cargo inside. Never exceed the weight capacity of your trailer hitch.

### Weight Distribution / WD

Used to balance the weight of the cargo between the front and rear wheels throughout the trailer, allowing for better steering, braking, and level riding.



### Sway Control

A device used to reduce the lateral movements of the trailer that are caused by the wind. This works in conjunction with a weight distribution hitch. Do not use this on a class 1 or 2 hitch, or with surge brakes.

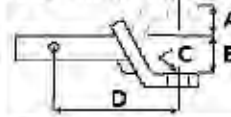
### How Much Can You Safely Tow?

TONGUE WEIGHT		TONGUE WEIGHT SHOULD BE ABOUT 10 TO 15 PERCENT OF THE GROSS TRAILER WEIGHT																				
TRAILER TYPE		CLASS 1					CLASS 2					CLASS 3										
Coupler	1100	1200	1300	1400	1500	1600																
	2100	2400	2700	3000	3300	3600	3900	4200	4500	4800												
	2800	3200	3600	4000	4400	4800	5200	5600	6000	6400												
<b>Refer to owner's manual for towing capabilities and limitations.</b>																						

### Ball Mount

The ball mount is placed inside the opening of the receiver hitch which is mounted to the vehicle. Make sure a hitch pin and clip is properly securing the ball mount to the receiver hitch before you begin towing.

• A: Rise. B: Drop. C: Hole Size. D: Length.



### Trailer Ball

The connection from the hitch to the trailer. There are many factors that determine the correct hitch ball:

- Number one is the hitch ball's gross trailer weight rating.
- The mounting platform must be at least 3/8" thick.
- The hole diameter must not be more than 1/16" larger than the threaded shank.
- Every time you tow, check the nut and lock washer to make sure they are fastened securely.
- A: Ball Dia. B: Shank Length. C: Shank Dia. D: Shank Rise.



### Coupler

The component that is placed over the trailer ball to connect the vehicle to the trailer. Be sure that the coupler size matches the size of the hitch ball and that the coupler handle is securely fastened. To determine what size hitch ball you need for your application you will need to know the size of coupler that is on the trailer. Be sure your coupler is properly adjusted to the ball you are using.

NOTE: For added security the use of safety devices such as Coupler Safety Pins and Locks is strongly recommended.

### Safety Chains

Safety chains are a requirement and should be crossed under the tongue of the trailer so that the tongue will not drop to the road if it becomes separated from the hitch. Always leave enough slack so you can turn. Never allow the safety chains to drag on the ground and never attach the chains to the bumper.

Trailer Classification: Safety Chain Breaking Force - Minimum

Class 1: 2,000 lbs. (8.9 kN)

Class 2: 3,500 lbs. (15.6 kN)

Class 3: 5,000 lbs. (22.2 kN)

The strength rating of each length of safety chain or its equivalent and its attachments shall be equal to or exceed in minimum breaking force the GVWR (Gross Vehicle Weight Rating) of the trailer.

### Electrical

Trailer lights, Electric Brakes, Break-away systems - Every time you tow, be sure to check that all components are working properly.

Wiring identification by color:



CURT DISCLAIMER: WIRING COLOR SHOWN WORK IN CONJUNCTION WITH CURT MANUFACTURING PRODUCTS.

13293

GMC ACADIA

7/12/2016

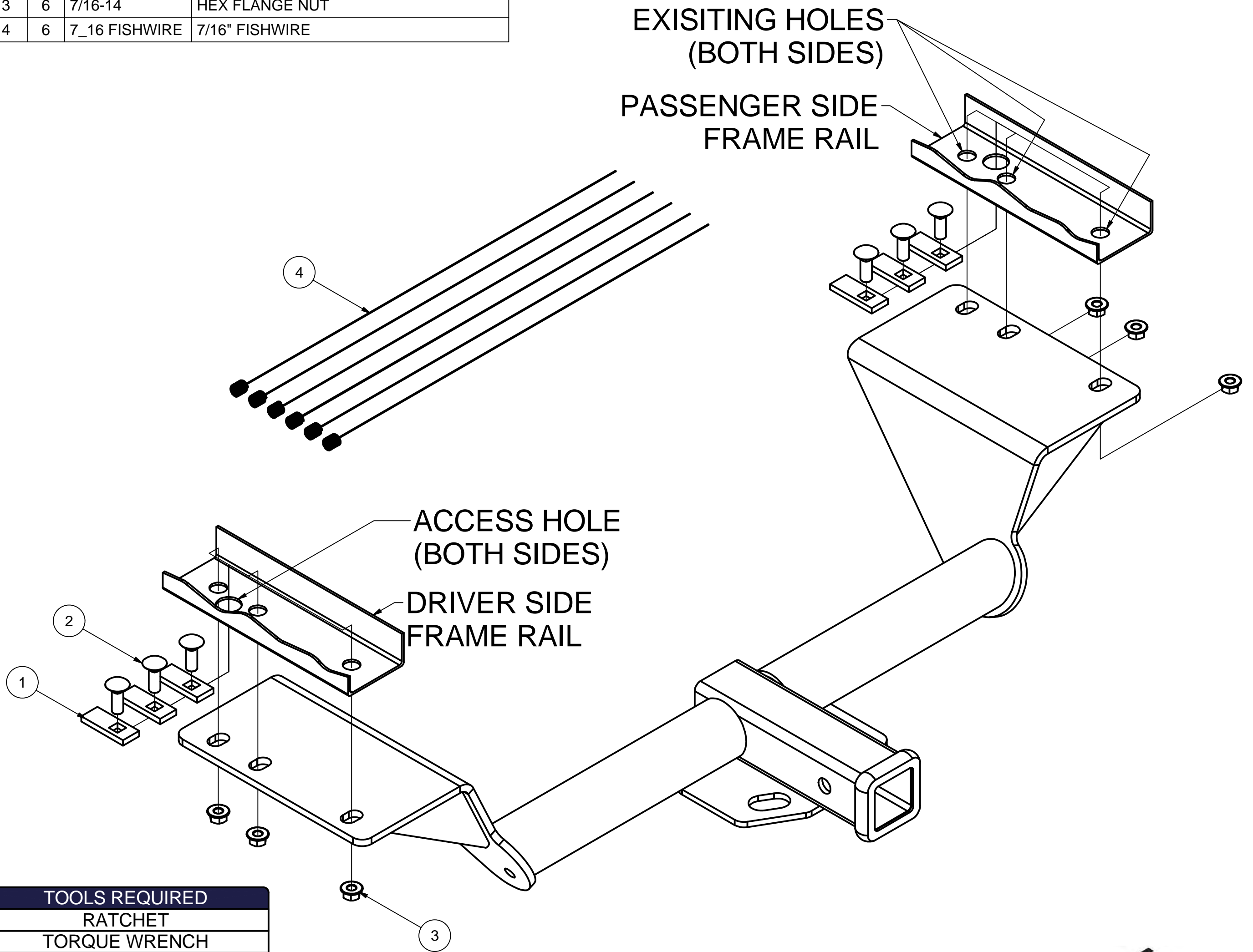
GROSS LOAD CAPACITY WHEN USED AS A WEIGHT CARRYING HITCH: 5,000 LBS. TRAILER WEIGHT & 750 LBS. TONGUE WEIGHT.  
 GROSS LOAD CAPACITY WHEN USED AS A WEIGHT DISTRIBUTION HITCH: 6,000 LBS. TRAILER WEIGHT & 750 LBS. TONGUE WEIGHT



WARNING: \*\*\* DO NOT EXCEED VEHICLE MANUFACTURER'S RECOMMENDED TOWING CAPACITY. \*\*\*  
 FOR MORE INFORMATION LOG ONTO WWW.CURTMFG.COM & FOR HELPFUL TOWING TIPS LOG ONTO WWW.HITCHINFO.COM  
 HAVING INSTALLATION QUESTIONS? CALL TECHNICAL SUPPORT AT 1-800-798-0813



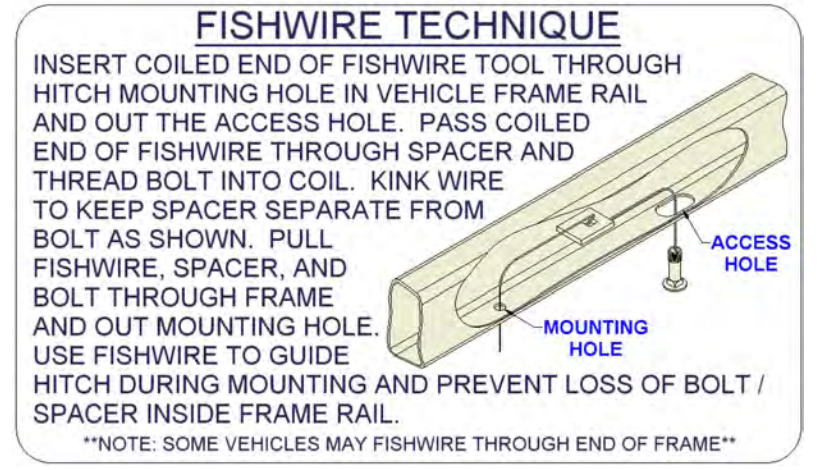
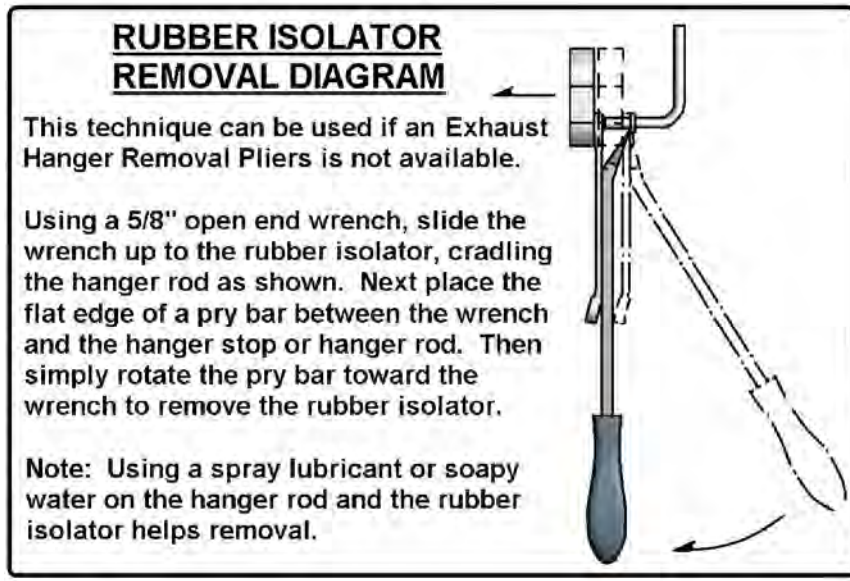
Parts List			
ITEM	QTY	PART NUMBER	DESCRIPTION
1	6	CM-SP2	.250 x .88 x 2.25" SQUARE HOLE SPACER
2	6	7/16-14 x 1 1/4	CARRIAGE BOLT
3	6	7/16-14	HEX FLANGE NUT
4	6	7_16 FISHWIRE	7/16" FISHWIRE



TOOLS REQUIRED
RATCHET
TORQUE WRENCH
15mm, 11/16" SOCKET
8" SOCKET EXTENSION
PLIERS
UTILITY KNIFE
AVIATION SHEARS
SAFETY GLASSES



HITCH WEIGHT: 37 LBS.  
 INSTALL TIME  
 PROFESSIONAL: 20 MINUTES  
 NOVICE (DIY): 40 MINUTES  
 INSTALL NOTES:  
 - TEMPORARILY REMOVE HEAT SHIELD  
 - NO DRILLING REQUIRED  
 - LOWER EXHAUST  
 - EXHAUST HEAT SHIELD TRIM REQUIRED

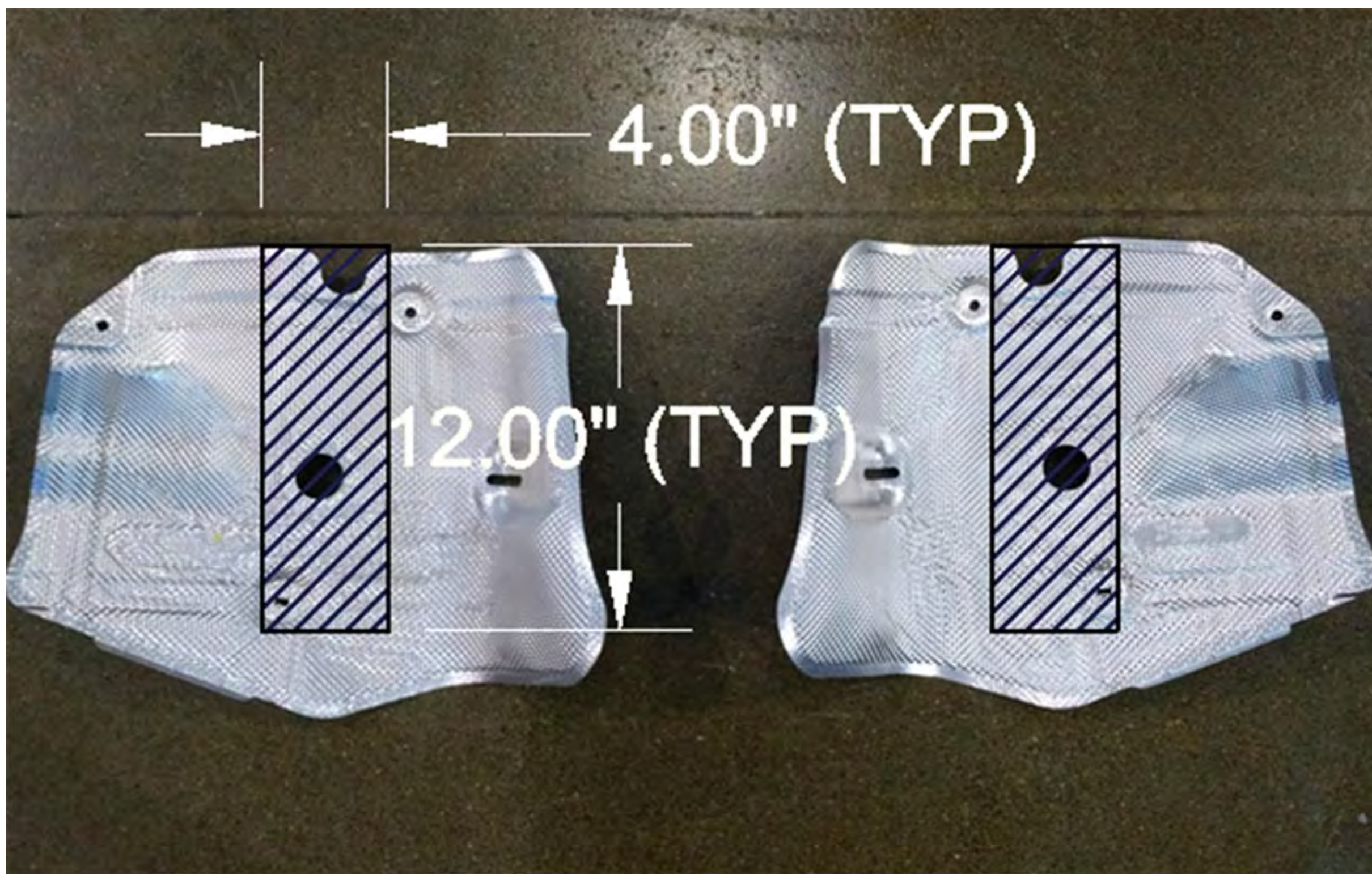


Scan for more information

PERIODICALLY CHECK THIS RECEIVER HITCH TO ENSURE THAT ALL FASTENERS ARE TIGHT AND THAT ALL STRUCTURAL COMPONENTS ARE SOUND.

CURT Manufacturing LLC., warrants this product to be free of defects in material and/or workmanship at the time of retail purchase by the original purchaser. If the product is found to be defective, CURT Manufacturing LLC., may repair or replace the product, at their option, when the product is returned, prepaid, with proof of purchase. Alteration to, misuse of, or improper installation of this product voids the warranty. CURT Manufacturing LLC.'s liability is limited to repair or replacement of products found to be defective, and specifically excludes liability for incidental or consequential loss or damage.

This product complies with safety specifications and requirements for connecting devices and towing systems of the state of New York, V.E.S.C.Regulation V-5 and SAE J684.



HEAT SHIELD TRIM DIAGRAM

### **INSTALLATION STEPS**

1. Lower exhaust by removing (3) rubber isolators as shown in the Rubber Isolator Removal Diagram.  
**NOTE:** Removing rearmost exhaust brackets from vehicle frame using a 15mm socket may ease in lowering exhaust.
2. Remove heat shield by removing (4) speed nuts on each side using needle nose pliers. Trim heat shields as shown in the trim diagram using aviation shears. Reinstall heat shields after trimming.  
**NOTE:** All dimensions are approximate, confirm fit prior to trim.
3. Fishwire (3) CM-SP2 spacers and (3) 7/16" carriage bolts through access holes and out mounting holes on each frame rail as shown in the Fishwire Technique Diagram.
4. Using pliers, remove (2) heat shield vehicle studs (1) on each side. Raise hitch into position and secure with (6) 7/16" flange nuts (3) on each side.  
**NOTE:** Scrape away excess caulk using a utility knife for proper installation.
5. Use an 11/16" socket and torque all 7/16" hardware to 70 ft-lbs. Raise exhaust back into position and reinstall rubber isolators removed in Step 1.

Installation Complete

PERIODICALLY CHECK THIS RECEIVER HITCH TO ENSURE THAT ALL FASTENERS ARE TIGHT AND THAT ALL STRUCTURAL COMPONENTS ARE SOUND.

CURT Manufacturing LLC., warrants this product to be free of defects in material and/or workmanship at the time of retail purchase by the original purchaser. If the product is found to be defective, CURT Manufacturing LLC., may repair or replace the product, at their option, when the product is returned, prepaid, with proof of purchase. Alteration to, misuse of, or improper installation of this product voids the warranty. CURT Manufacturing LLC.'s liability is limited to repair or replacement of products found to be defective, and specifically excludes liability for incidental or consequential loss or damage.

This product complies with safety specifications and requirements for connecting devices and towing systems of the state of New York, V.E.S.C.Regulation V-5 and SAE J684.