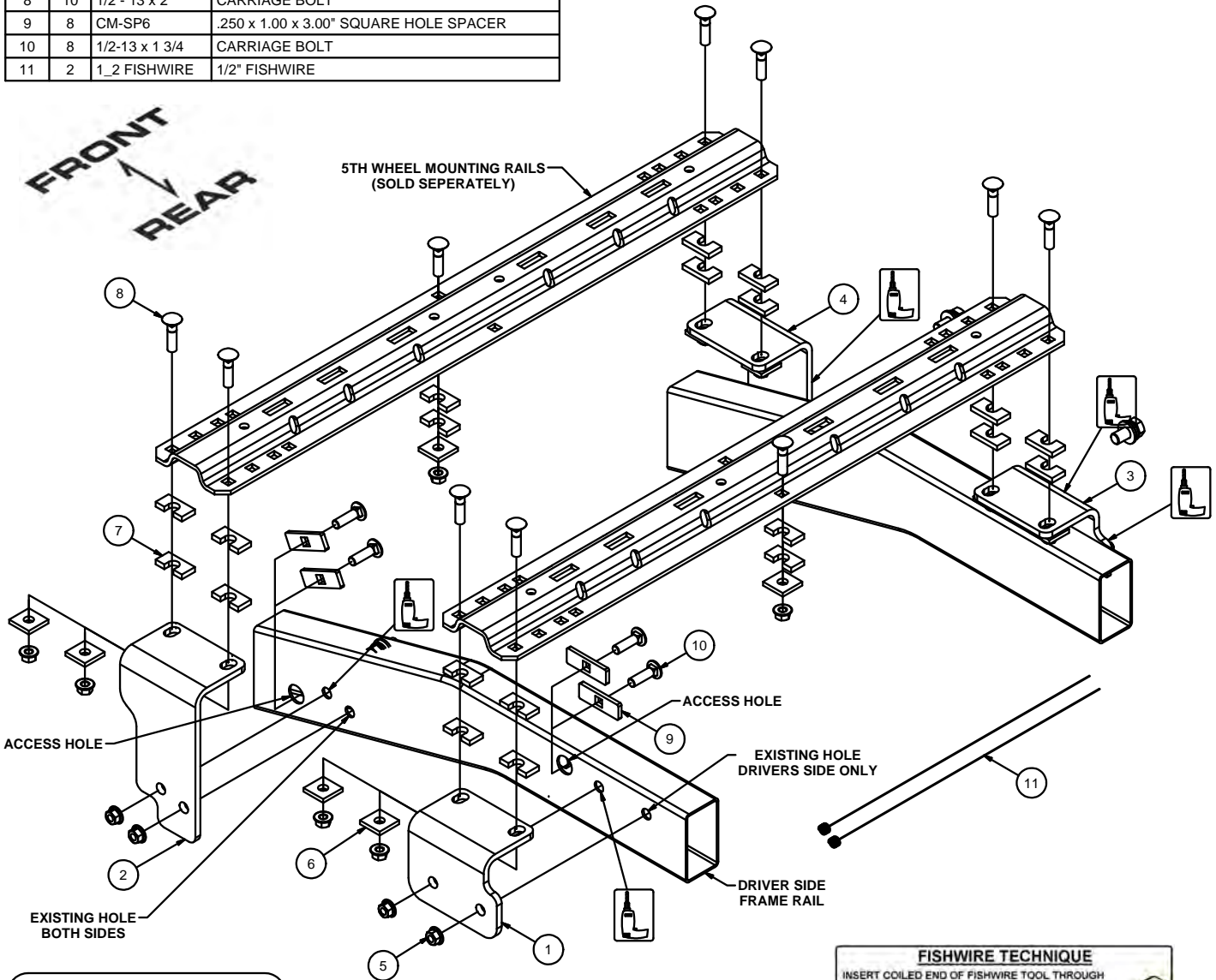


\*\*\*DO NOT EXCEED VEHICLE MANUFACTURER'S RECOMMENDED TOWING CAPACITY.\*\*\*  
 USE CURT 5TH WHEEL ROLLER ON 7' BED OR SHORTER TRUCKS

| Parts List |     |                |  |
|------------|-----|----------------|--|
| ITEM       | QTY | PART NUMBER    | DESCRIPTION                                |
| 1          | 1   | CM-16470-DSR   | DRIVER SIDE REAR PLATE .375" A-36 H.R.     |
| 2          | 1   | CM-16470-DSF   | DRIVER SIDE FRONT PLATE .375" A-36 H.R.    |
| 3          | 1   | CM-16470-PSR   | PASSENGER SIDE REAR PLATE .375" A-36 H.R.  |
| 4          | 1   | CM-16470-PSF   | PASSENGER SIDE FRONT PLATE .375" A-36 H.R. |
| 5          | 18  | HFN 1213       | HEX FLANGE NUT                             |
| 6          | 10  | CM-SP22        | .250 x 1.50 x 1.50" ROUND HOLE SPACER      |
| 7          | 20  | CM-SP136       | .313" x 1.00 x 2.00" U-SHAPE SPACER        |
| 8          | 10  | 1/2 - 13 x 2"  | CARRIAGE BOLT                              |
| 9          | 8   | CM-SP6         | .250 x 1.00 x 3.00" SQUARE HOLE SPACER     |
| 10         | 8   | 1/2-13 x 1 3/4 | CARRIAGE BOLT                              |
| 11         | 2   | 1_2 FISHWIRE   | 1/2" FISHWIRE                              |

| TOOLS REQUIRED   |
|------------------|
| RATCHET          |
| TORQUE WRENCH    |
| DRILL            |
| TAPE MEASURE     |
| 3/4" SOCKET      |
| CENTER PUNCH     |
| 17/32" DRILL BIT |
| 1/8" DRILL BIT   |



**FISHWIRE TECHNIQUE**

INSERT COILED END OF FISHWIRE TOOL THROUGH HITCH MOUNTING HOLE IN VEHICLE FRAME RAIL AND OUT THE ACCESS HOLE. PASS COILED END OF FISHWIRE THROUGH SPACER AND THREAD BOLT INTO COIL. KINK WIRE TO KEEP SPACER SEPARATE FROM BOLT AS SHOWN. PULL FISHWIRE, SPACER, AND BOLT THROUGH FRAME AND OUT MOUNTING HOLE. USE FISHWIRE TO GUIDE HITCH DURING MOUNTING AND PREVENT LOSS OF BOLT / SPACER INSIDE FRAME RAIL.

\*\*NOTE: SOME VEHICLES MAY FISHWIRE THROUGH END OF FRAME\*\*

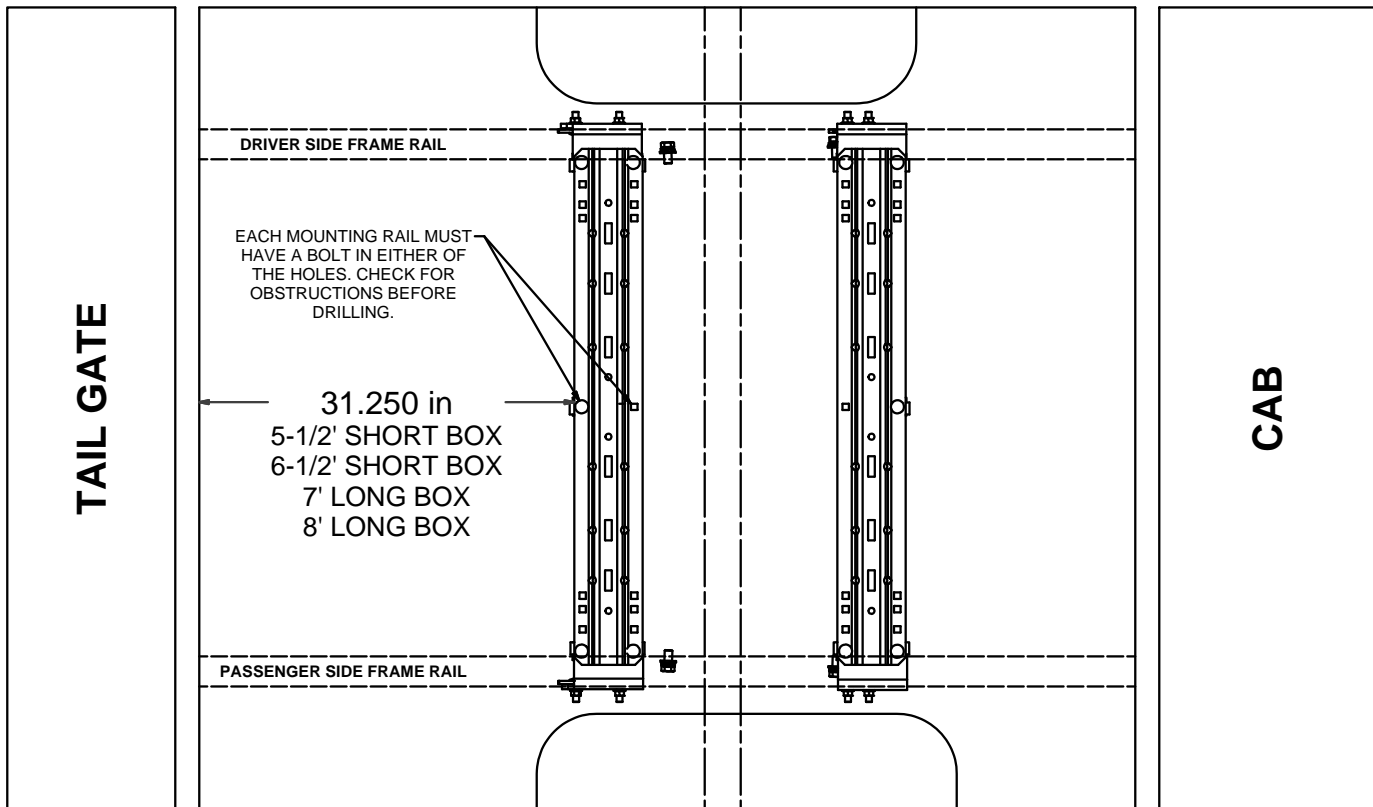
**HITCH WEIGHT:** .32 LBS.  
**INSTALL TIME**  
 PROFESSIONAL: 60 MINUTES  
 NOVICE (DIY): 120 MINUTES  
**INSTALL NOTES:**  
 - DRILLING REQUIRED

PERIODICALLY CHECK THIS HITCH TO ENSURE THAT ALL FASTENERS ARE TIGHT AND THAT ALL STRUCTURAL COMPONENTS ARE SOUND.

Curt Manufacturing Inc., warrants this product to be free of defects in material and/or workmanship at the time of retail purchase by the original purchaser. If the product is found to be defective, Curt Manufacturing Inc., may repair or replace the product, at their option, when the product is returned, prepaid, with proof of purchase. Alteration to, misuse of, or improper installation of this product voids the warranty. Curt Manufacturing Inc.'s liability is limited to repair or replacement of products found to be defective, and specifically excludes liability for incidental or consequential loss or damage.

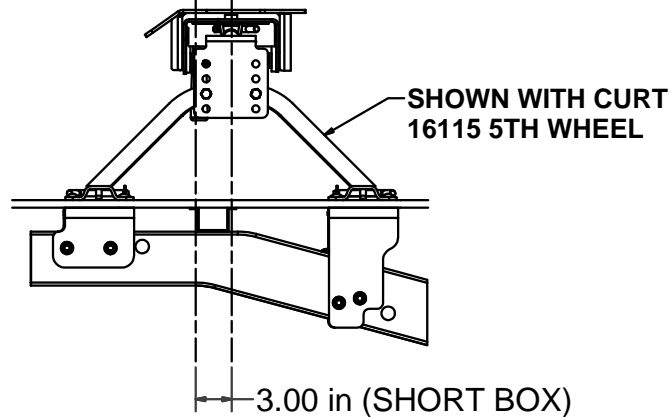
\*\*\*DO NOT EXCEED VEHICLE MANUFACTURER'S RECOMMENDED TOWING CAPACITY.\*\*\*  
 USE CURT 5TH WHEEL ROLLER ON 7' BED OR SHORTER TRUCKS

**RAIL LOCATION DIAGRAM**



CENTER LINE OF AXLE  
 CENTER LINE OF HITCH

**When installing kit on 7' beds or shorter, a Curt 5th Wheel Roller must be used to prevent cab damage when making sharp turns.**



PERIODICALLY CHECK THIS HITCH TO ENSURE THAT ALL FASTENERS ARE TIGHT AND THAT ALL STRUCTURAL COMPONENTS ARE SOUND.

Curt Manufacturing Inc., warrants this product to be free of defects in material and/or workmanship at the time of retail purchase by the original purchaser. If the product is found to be defective, Curt Manufacturing Inc., may repair or replace the product, at their option, when the product is returned, prepaid, with proof of purchase. Alteration to, misuse of, or improper installation of this product voids the warranty. Curt Manufacturing Inc.'s liability is limited to repair or replacement of products found to be defective, and specifically excludes liability for incidental or consequential loss or damage.

\*\*\*DO NOT EXCEED VEHICLE MANUFACTURER'S RECOMMENDED TOWING CAPACITY.\*\*\*  
USE CURT 5TH WHEEL ROLLER ON 7' BED OR SHORTER TRUCKS

**!WARNING!**

- Do not install mounting rails over plastic bed liners. Plastic liners must be trimmed for metal-to-metal contact. May be installed on spray in liner.
- Use only supplied fasteners for installation.
- Before installing hitch measure to be sure there will be enough clearance between the truck and trailer to allow for turns.
- Frame rail must be clear of any electrical or brake components where side plates attach.
- When drilling, protect the electrical and brake components from damage by placing a piece of metal between.

**INSTALLATION STEPS:**

1. Align the driver side rear plate over the existing hole in driver side frame rail. Push plate up to the bottom of the truck bed and mark the hole required for drilling. Remove plate and drill the hole for 1/2" bolt.
2. Locate the passenger side rear plate equal distance from the truck cross member as the driver side rear plate and mark the hole locations. Remove plate and drill holes for 1/2" bolts.
3. Place one mounting rail in the box of the truck, using your tape measure, center the rail on the truck box floor and the proper distance from the rear edge of the truck box as shown on the "**rail location diagram**" page.
4. Using a center punch, mark the holes as per the rail location diagram. Move the mounting rail out of the way and drill each position with a 1/8" drill bit.
5. Temporarily position the side plates on the side of the frame and check that the 1/8" drilled holes align with the slots of the side plates. Remove the side plates from the vehicle.
6. Enlarge the 1/8" drill holes to 9/16" with a step drill. Frame access holes may require enlargement as well.
7. Reposition the rear side plates on the frame rails. Fishwire 1/2-13 X 1 3/4" carriage bolts and SP6 spacers through the frame rails and side plates and secure with 1/2" flange nuts. (SEE FISHWIRE TECHNIQUES) Position the mounting rail over the holes and secure them to the side plates using the 1/2-13 X 2" carriage bolts and 1/2" flange nuts. Use the supplied SP136 spacers between the frame bracket or mounting rails and the truck box so as to ensure a metal to metal contact and to eliminate "rib crush" of the bed.
8. Place the unassembled 5th wheel / roller / gooseneck hitch into the already installed mounting rail. Position the second mounting rail with the 5th wheel / roller / gooseneck hitch by inserting the tabs into the mounting rail and pushing the mounting rail tight towards the other mounting rail. Ensure that the mounting rail is centered on the truck box floor. This will position the rail in the correct location and ensure that the 5th wheel will have a snug fit to the truck.

**NOTE: If more than one hitch product will be used with the mounting rails then both should be used at the same time to align the second mounting rail. This will ensure that one product does not compromise the fit of the other.**

9. Align the driver side front plate over the existing hole in driver side frame rail. Push plate up to the bottom of the truck bed and mark the hole required for drilling. Remove plate and drill the hole for 1/2" bolt.  
**NOTE: May need to flex plastic wheel well trim and remove wire clip to slide front plates in place.**
10. Locate the passenger side front plate equal distance from the truck cross member as the driver side rear plate and mark the hole locations. Remove plate and drill holes for 1/2" bolts.
11. Repeat steps 4, 5, 6, and 7 for mounting the front rail.
12. Starting with the carriage bolts that fastened the rails to the frame bracket, torque all the nuts. Torque all 1/2" fasteners to 110 ft-lbs.

PERIODICALLY CHECK THIS HITCH TO ENSURE THAT ALL FASTENERS  
ARE TIGHT AND THAT ALL STRUCTURAL COMPONENTS ARE SOUND.