



**Before returning this product  
to the store of purchase**

**Contact Dee Zee if you experience the following problems:**

- Missing Parts
- Installation Problems/Questions
- Warranty Questions

**1.800.779.2102**

Hours of operation: 8am - 5pm CST, Mon-Friday

Review complete warranty policy and register your product at:

**[www.deezee.com](http://www.deezee.com)**



## Dee Zee Hybrid Bed Cap Installation Instructions

***Congratulations on your purchase of a quality Dee Zee product. Dee Zee is recognized as having the highest quality running boards and accessories on the market today. We have earned this reputation by offering our customers a product they can be proud to place on their vehicles. Dee Zee meets all the criteria of manufacturing a custom-fit product which guarantees it to be the easiest product to install.***

**Note:** Please take time to read all of the instructions before beginning this installation.

**Note:** When drilling holes into the body panel of your vehicle, Dee Zee recommends putting a sealant or rust inhibitor around all drilled holes.

**Warning!** In order to ensure proper installation of this product it must be taped down and bolted onto the vehicle. Failure to do so could result in injury or vehicle damage.

**Cleaning instructions:** To maintain the bright finish of your Dee Zee bed cap, clean with a mild detergent and use a high grade automotive type wax. **DO NOT USE ABRASIVE CLEANERS ON THIS PRODUCT!**

If you should happen to have any questions with this product or you have an installation question, please feel free to call us at:

**1-800-779-8222**

If you would like to find out more information on Dee Zee's products, please feel free to visit our website at:

**WWW.DEEZEE.COM**

# Dee Zee Hybrid Bed Caps

**A**

Hybrid Plastic Bed Caps

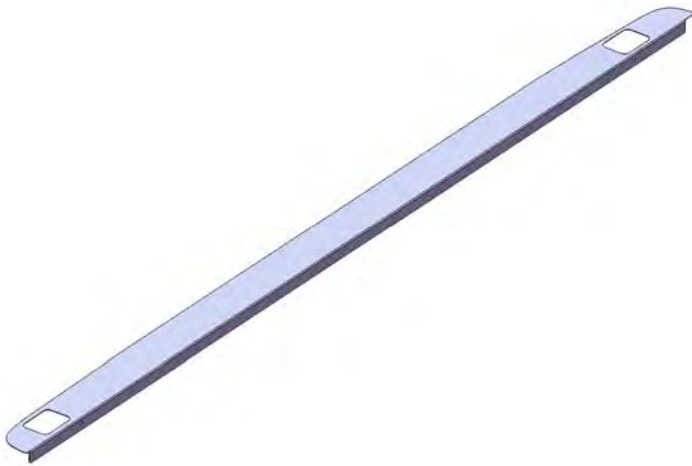
1LH / 1RH



**B**

Hybrid Brite-Tread Inserts

1LH / 1RH



**C**

1/4" X 1" Ribneck Carriage Head Bolt



PN 87

X4

**D**

1/4" Flat Washer

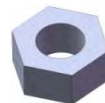


PN 72

X4

**E**

1/4" Hex Nut



PN 71

X4

**F**

Alcohol Pads

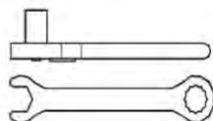


ALPAD

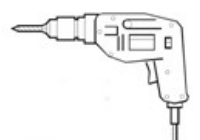
X4

Tools Required

Ratchet / Wrench  
7/16"



Drill  
Bit sizes  
1/4"

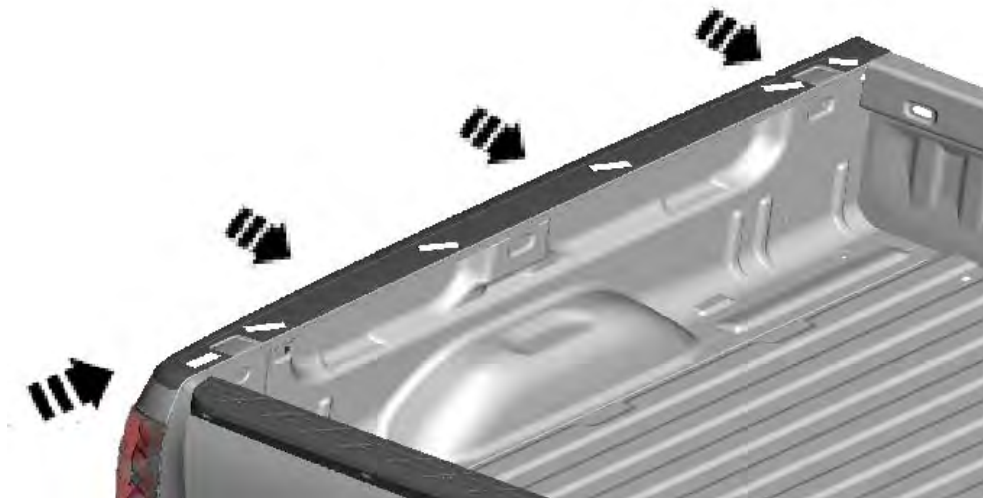


**1**

Clean the surface of the truck bed rail before installation in order to remove any dirt, then use the alcohol pads (F) to clean the surface of any further contaminants to promote better adhesion to the truck bed rail surface.

**2**

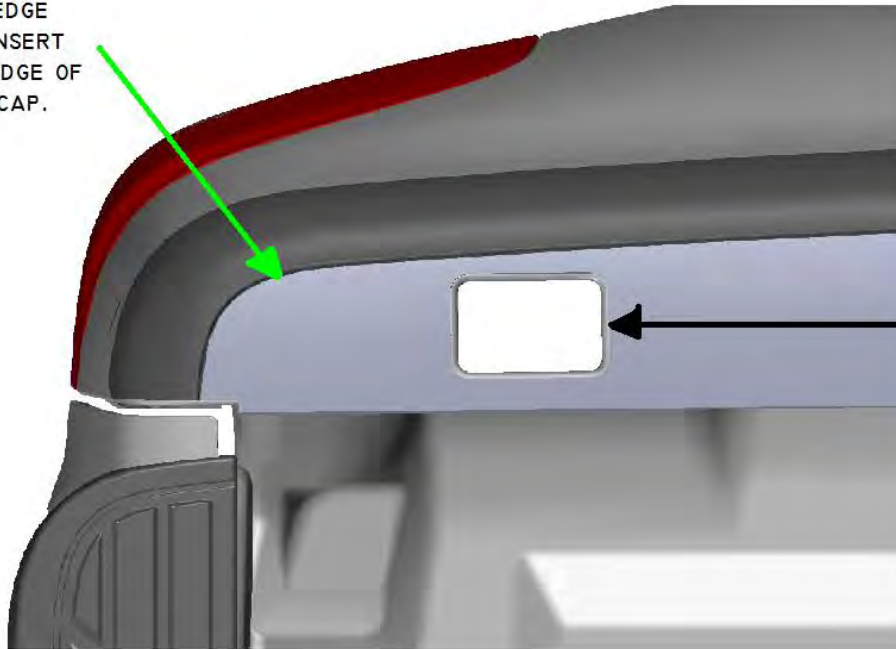
Take the driver's side hybrid plastic bed cap (A) and place it onto the bed rail, but do not remove the tape yet. Line up the bed cap with the truck bed rail making sure that none of the stake pocket holes are covered. Push the plastic bed cap forward and toward the inside of the bed until the wrap of the bed cap matches the wrap of the truck bed rail and the plastic bed cap is resting naturally on the truck bed rail.



### 3

With the plastic bed cap resting on top of the truck bed rail, take the brite-tread insert (B) and place it on top of the plastic bed cap (A). Move the brite-tread insert so that it's in a position where the profile of the plastic matches the profile of the brite-tread. Also make sure that the stake pockets are not covered and are centered (where applicable).

LINE UP OUTSIDE EDGE  
OF BRITE-TREAD INSERT  
WITH THE INSIDE EDGE OF  
THE PLASTIC BED CAP.



MAKE SURE STAKE  
POCKET HOLES LINE  
UP PROPERLY.

**Note:** There may be a gap between the plastic bed cap and the brite-tread insert where the two profiles meet. This gap will be taken care of in step 4.

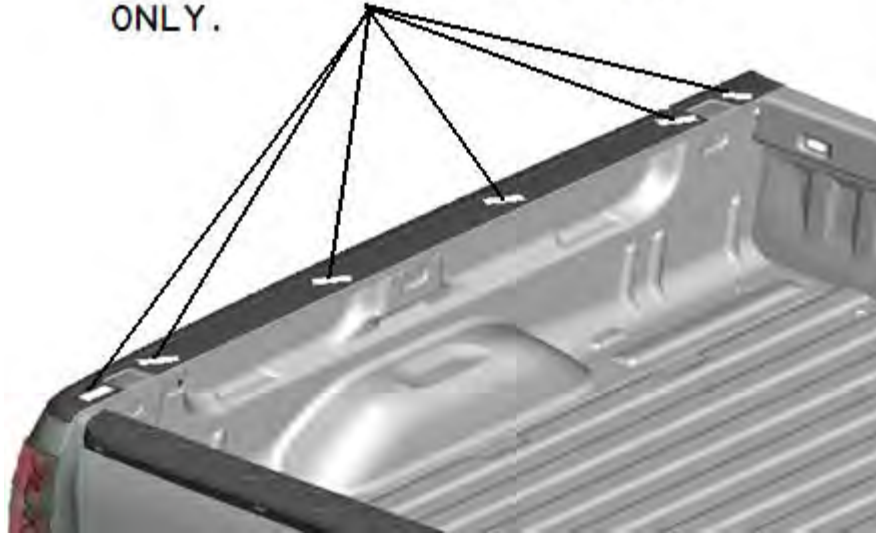
### 4

**Note:** This step may require a second person to help line up the brite-tread insert when taping it to the plastic bed cap.

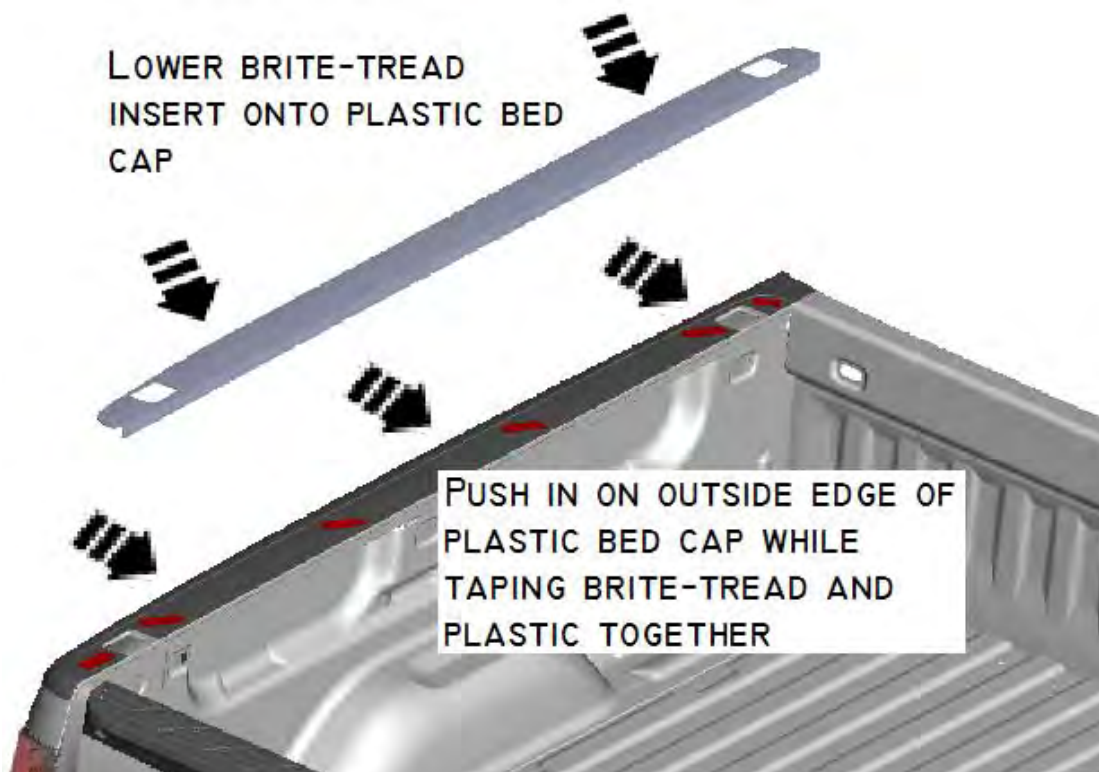
Now that the plastic bed cap and the brite-tread insert locations along the vehicle are known take the brite-tread insert off of the plastic bed cap and set it aside. Remove the backing off the tape on top of the plastic bed cap as shown in the picture on the next page.

**Note:** It's recommended that a 50/50 mixture of alcohol and water should be dabbed onto the tape after the backing is removed. This mixture will allow for the brite-tread insert to be moved around while lining it up with the plastic bed cap without the tape totally adhering the two pieces together upon contact.

REMOVE THE BACKING OFF THE  
TAPE IN THESE SIX LOCATIONS  
ONLY.

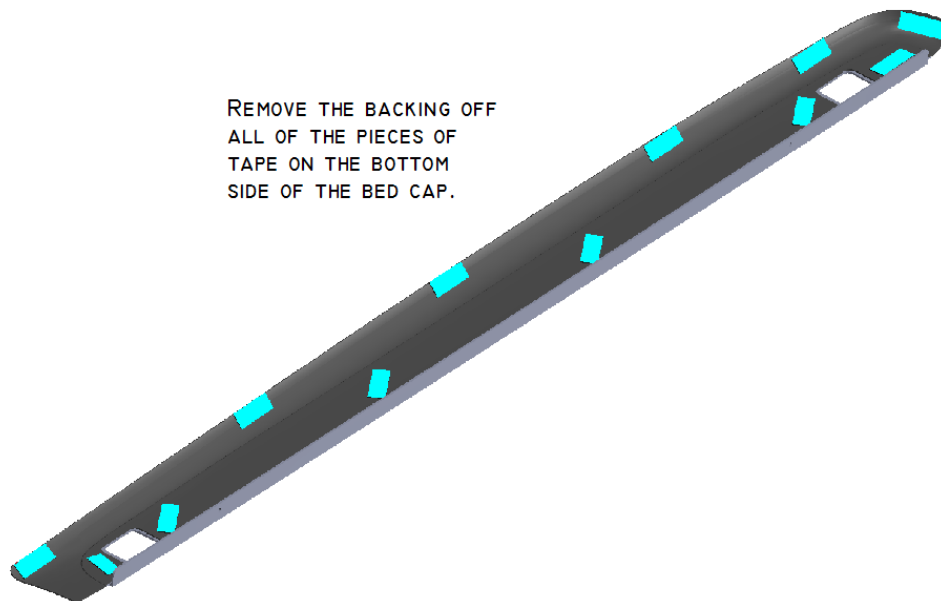


Recalling the location of the brite-tread insert from step 3, line up and slowly lower the brite-tread insert onto the plastic bed cap. Push in on the outside edge of the plastic bed cap to take out any gap between the plastic bed cap and the brite-tread insert while lowering the brite-tread insert onto the tape. Press down firmly onto the brite-tread insert for 30 seconds to ensure proper adhesion to the plastic bed cap.



**5**

With the brite-tread insert and the plastic bed cap taped together remove the bed cap from the truck bed rail, flip over, and remove the backing from the tape on the bottom side of the bed cap.



**6**

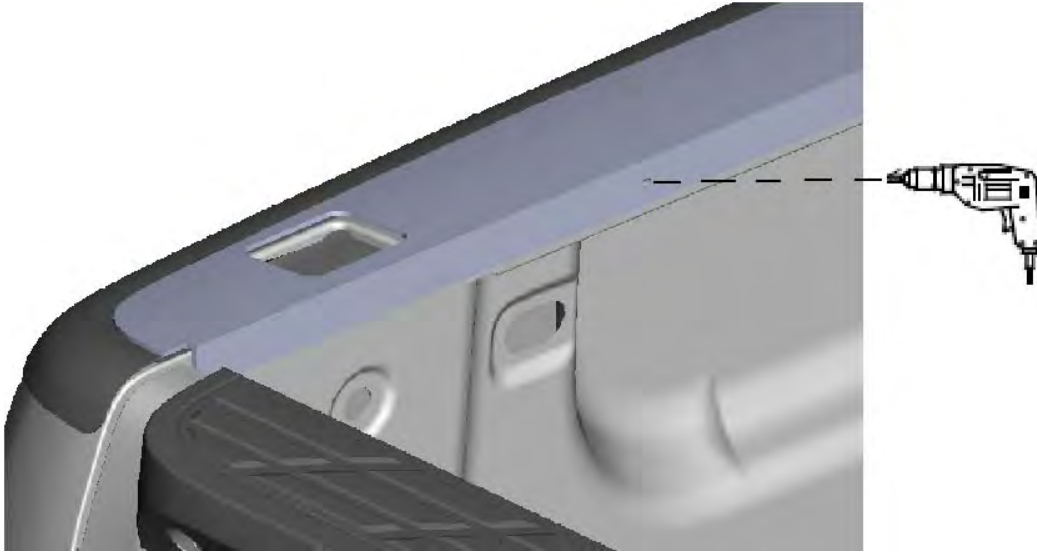
Recalling the location of the bed cap from step 3, line up and slowly lower the bed cap onto the truck bed rail.



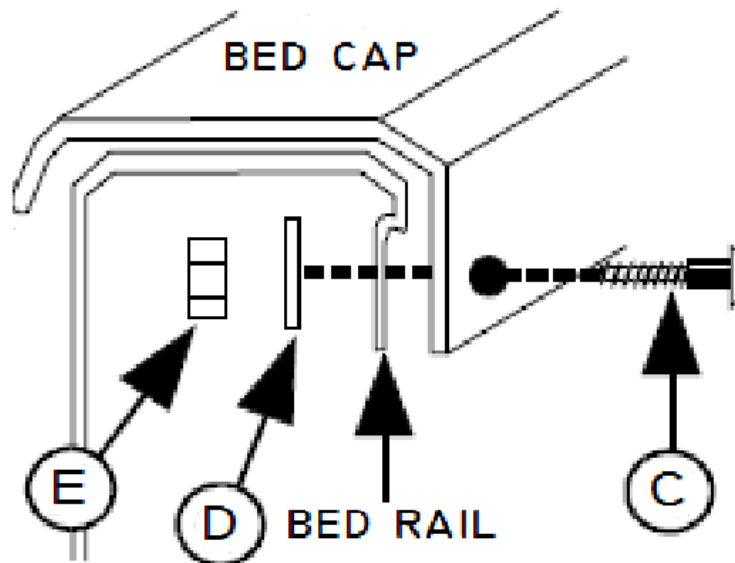
Once everything is lined up, firmly press down on the top and sides of the bed cap for 30 seconds to ensure that the bed cap properly adheres to the vehicle.

7

With the bed cap taped to the vehicle use the holes in the brite-tread insert at each ends of the truck bed as guides to drill two 1/4" holes into the vehicle bed rail.



Secure the bed cap to the vehicle bed rail using a 1/4" x 1" ribneck carriage bolt (C), a 1/4" flat washer (D), and a 1/4" hex nut (E) at the mounting locations drilled into the bed rail.



**Warning!** Failure to both tape and bolt the bed caps to the vehicle could result in injury or damage to the vehicle.

8

Repeat steps 1-7 for the passenger side of the vehicle.