



**Before returning this product
to the store of purchase**

Contact Dee Zee if you experience the following problems:

- Missing Parts
- Installation Problems/Questions
- Warranty Questions

1.800.779.2102

Hours of operation: 8am - 5pm CST, Mon-Friday

Review complete warranty policy and register your product at:

www.deezee.com



Dee Zee Running Board Installation Instructions

Congratulations on your purchase of a quality Dee Zee product. Dee Zee is recognized as having the highest quality running boards and accessories on the market today. We have earned this reputation by offering our customers a product they can be proud to place on their vehicles. Dee Zee meets all the criteria of manufacturing a custom-fit product which guarantees it to be the easiest product to install.

Note: Please take time to read all of the instructions before beginning this installation.

Warning! Please check for wiring or other obstructions before drilling any holes into the vehicle. If it is necessary to drill any holes into the vehicle, Dee Zee recommends putting a sealant or rust inhibitor around all holes drilled into the body of the vehicle.

Warning! It is unlawful and dangerous to ride on running boards or side box boards while vehicle is in motion.

Cleaning instructions: To maintain the bright finish of your Dee Zee running boards, clean with a mild detergent and use a high grade automotive type wax. DO NOT USE ABRASIVE CLEANERS ON THIS PRODUCT!








If you should happen to have any questions with this product or you have an installation question, please feel free to call us at:

1-800-779-8222

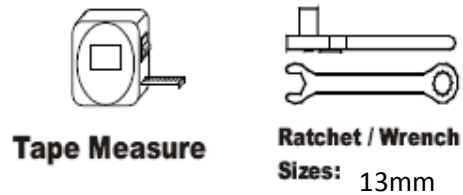
If you would like to find out more information on Dee Zee's products, please feel free to visit our website at:

WWW.DEEZEE.COM

DZ 16211 BUICK ENCLAVE BRACKET KIT

<p>A DZ 16201 / DZ 16202 / DZ 16203 *SOLD SEPARATELY FROM THIS KIT*</p>  <p>BD BRBOARDBB BD BRBOARDBVM BD BRBOARDSSB</p> <p style="text-align: right;">X2</p>	<p>B RUNNING BOARD BRACKET</p>  <p>B 1733P</p> <p style="text-align: right;">X4</p>	<p>C M8 X 20mm HEX HEAD BOLT</p>  <p>PN 527</p> <p style="text-align: right;">X12</p>
<p>D M8 HEX HEAD FLANGE NUT</p>  <p>PN 526</p> <p style="text-align: right;">X8</p>	<p>E M8 X 18 mm SQ HEAD BOLT</p>  <p>PN 524</p> <p style="text-align: right;">X8</p>	<p>F M8 - 1.25 2 TAB WELD NUT</p>  <p>PN 611</p> <p style="text-align: right;">X4</p>
<p>G M8 - 1.25 SINGLE TAB SPOT WELD NUT</p>  <p>PN 714</p> <p style="text-align: right;">X8</p>		

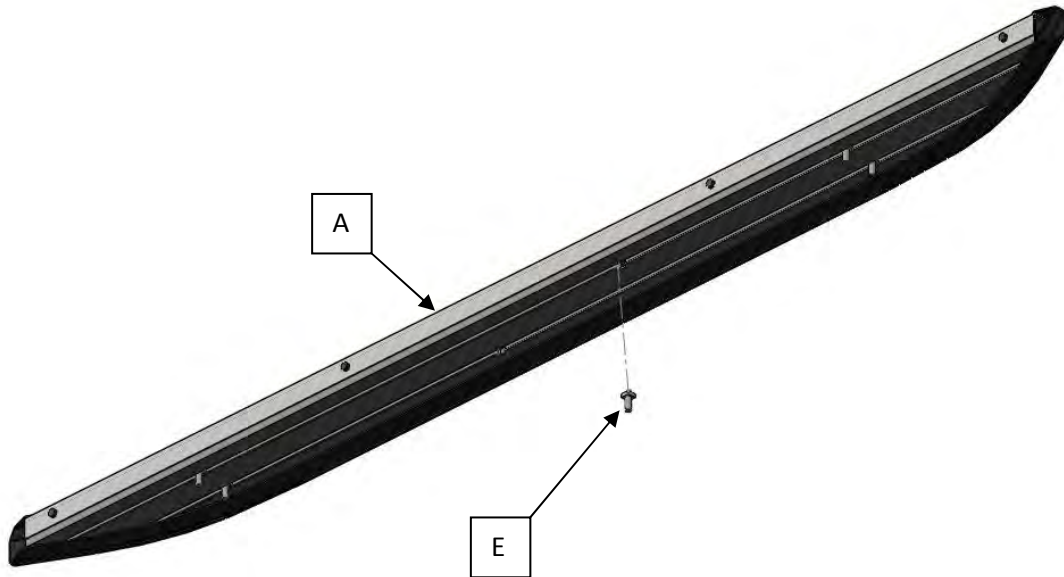
Tools required:



Note: Air tools recommended.

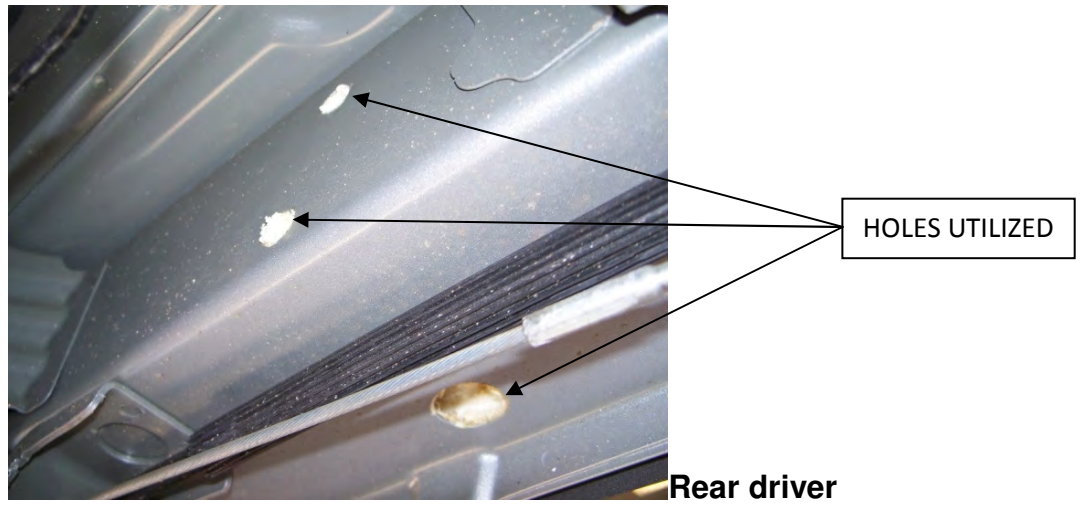
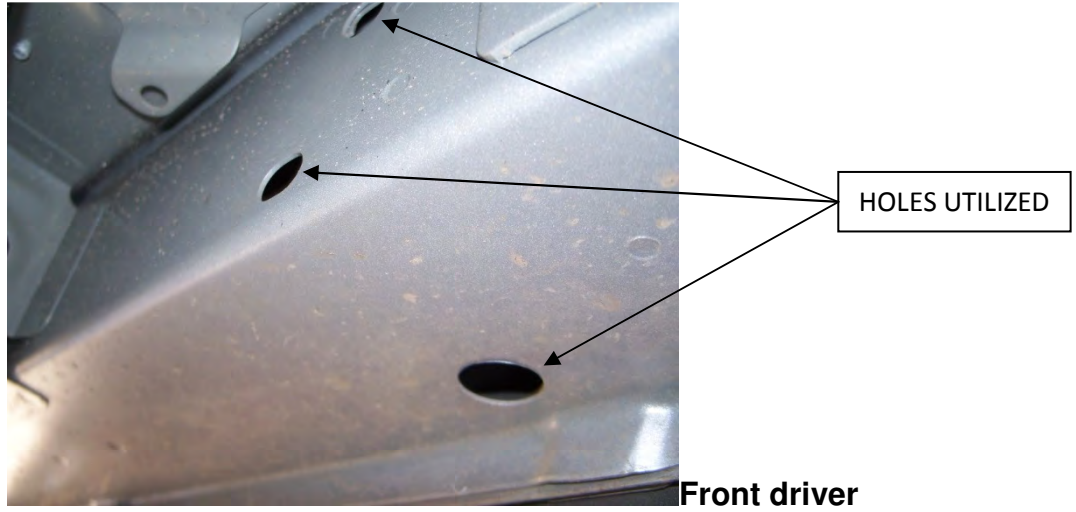
1

Place the 8mm square head bolts (E) into the two bolt channels of the running board (A) and slide toward either end of the board. For this application, there should be two bolts in each channel on opposite ends of the board.



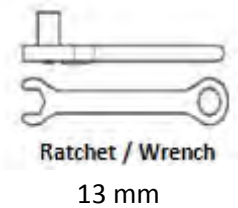
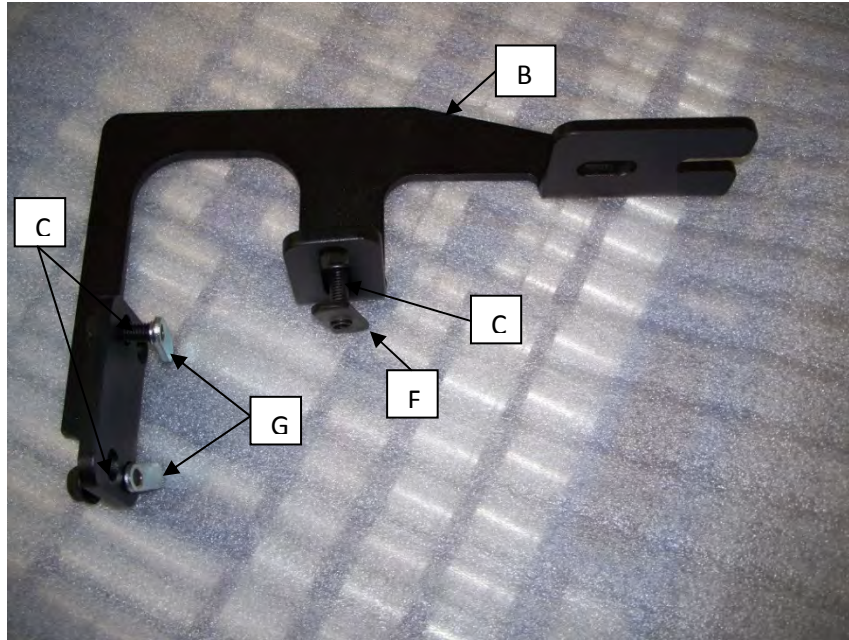
2

Locate the existing hole locations shown below. There will be two sets of hole locations (Front, Rear).



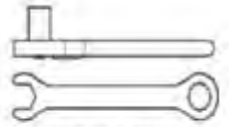
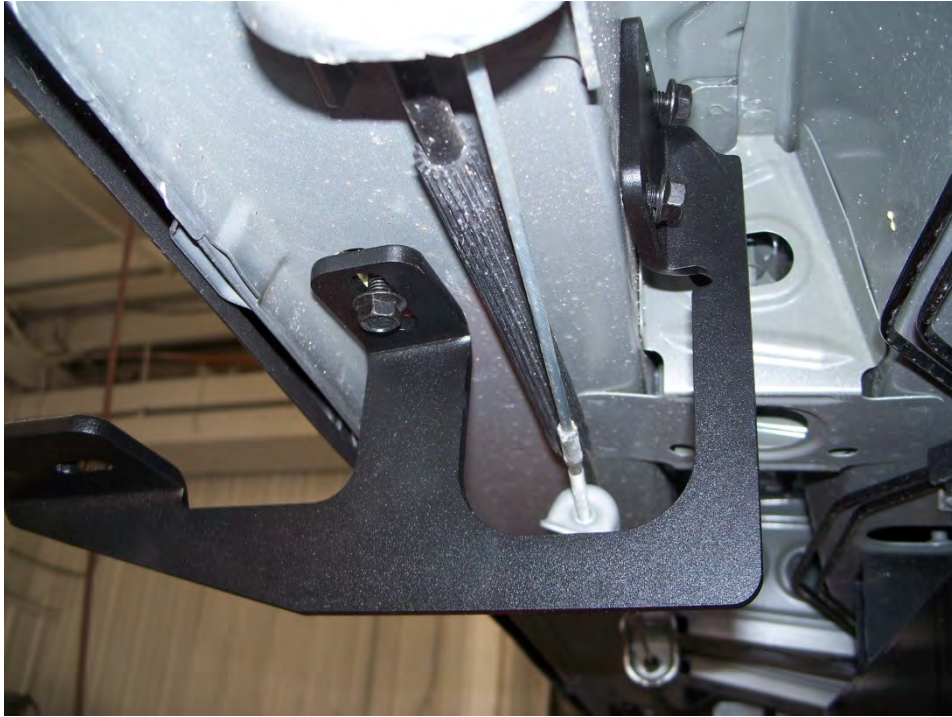
3

Place an 8mm x 20mm Hex Head bolt (C) through running board bracket (B) and start the bolt into a M8 – 1.25 2 tab weld nut (F) in the front hole location shown below. Then start the 2 rear hole location bolts (shown below) into a M8 – 1.25 single tab spot weld nut (G). Position bracket into front driver location with thread plates in vehicle openings and tighten, but do not tighten completely.



4

Repeat step 3 for the rear bracket. Position bracket into rear driver location with thread plates in vehicle openings and tighten, but do not tighten completely.

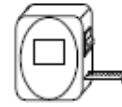
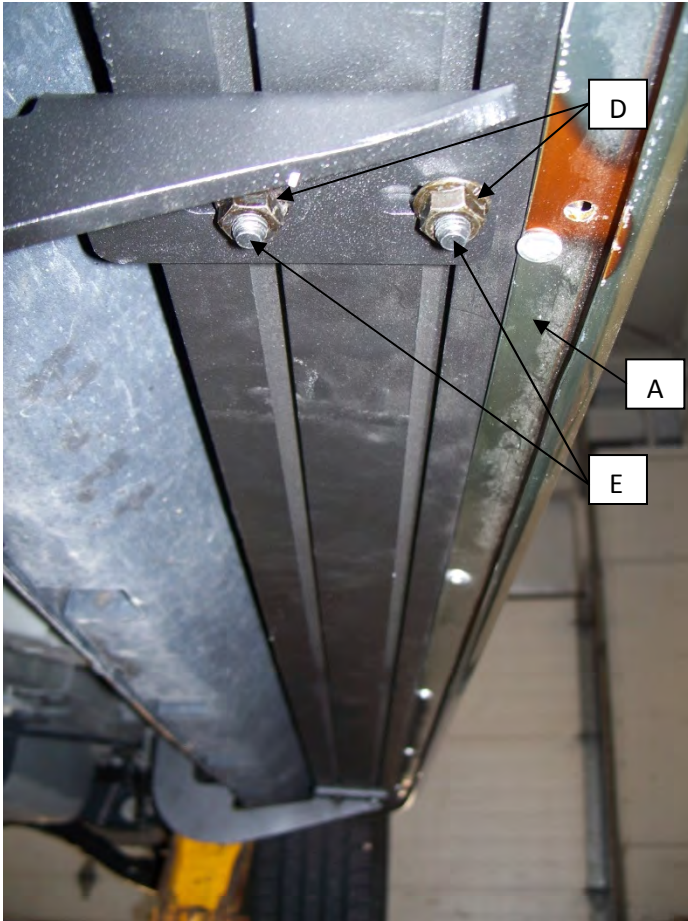


Ratchet / Wrench

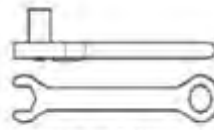
13 mm

5

Place running board (A) onto the brackets. Align 8mm square head bolts (E) in the bottom of the running board (A) with holes in the brackets. Completely tighten brackets to vehicle. Center board on vehicle between wheel well openings or until desired appearance is aquired. Adjust board in/out on vehicle until desired appearance is met. Secure board into palce using 8mm hex nuts (D).



Tape Measure



Ratchet / Wrench

13 mm

6

Repeat steps 1-5 for passenger side.