



**Before returning this product
to the store of purchase**

Contact Dee Zee if you experience the following problems:

- Missing Parts
- Installation Problems/Questions
- Warranty Questions

1.800.779.2102

Hours of operation: 8am - 5pm CST, Mon-Friday

Review complete warranty policy and register your product at:

www.deezee.com



Dee Zee Nerfstep Installation Instructions

Congratulations on your purchase of a quality Dee Zee product. Dee Zee is recognized as having the highest quality running boards and accessories on the market today. We have earned this reputation by offering our customers a product they can be proud to place on their vehicles. Dee Zee meets all the criteria of manufacturing a custom-fit product which guarantees it to be the easiest product to install.

Note: Please take time to read all of the instructions before beginning this installation.

Cleaning instructions: To maintain the bright finish of your Dee Zee nerfsteps, clean with a mild detergent and use a high grade automotive type wax. DO NOT USE ABRASIVE CLEANERS ON THIS PRODUCT!


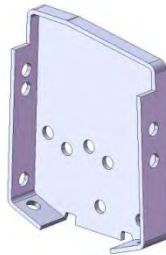




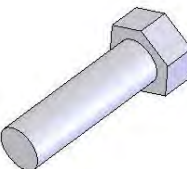
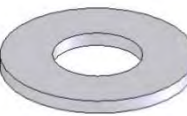
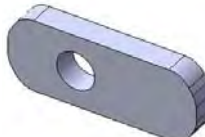






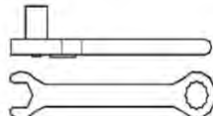

If you should happen to have any questions with this product or you have an installation question, please feel free to call us at:

1-800-779-8222

If you would like to find out more information on Dee Zee's products, please feel free to visit our website at:

WWW.DEEZEE.COM

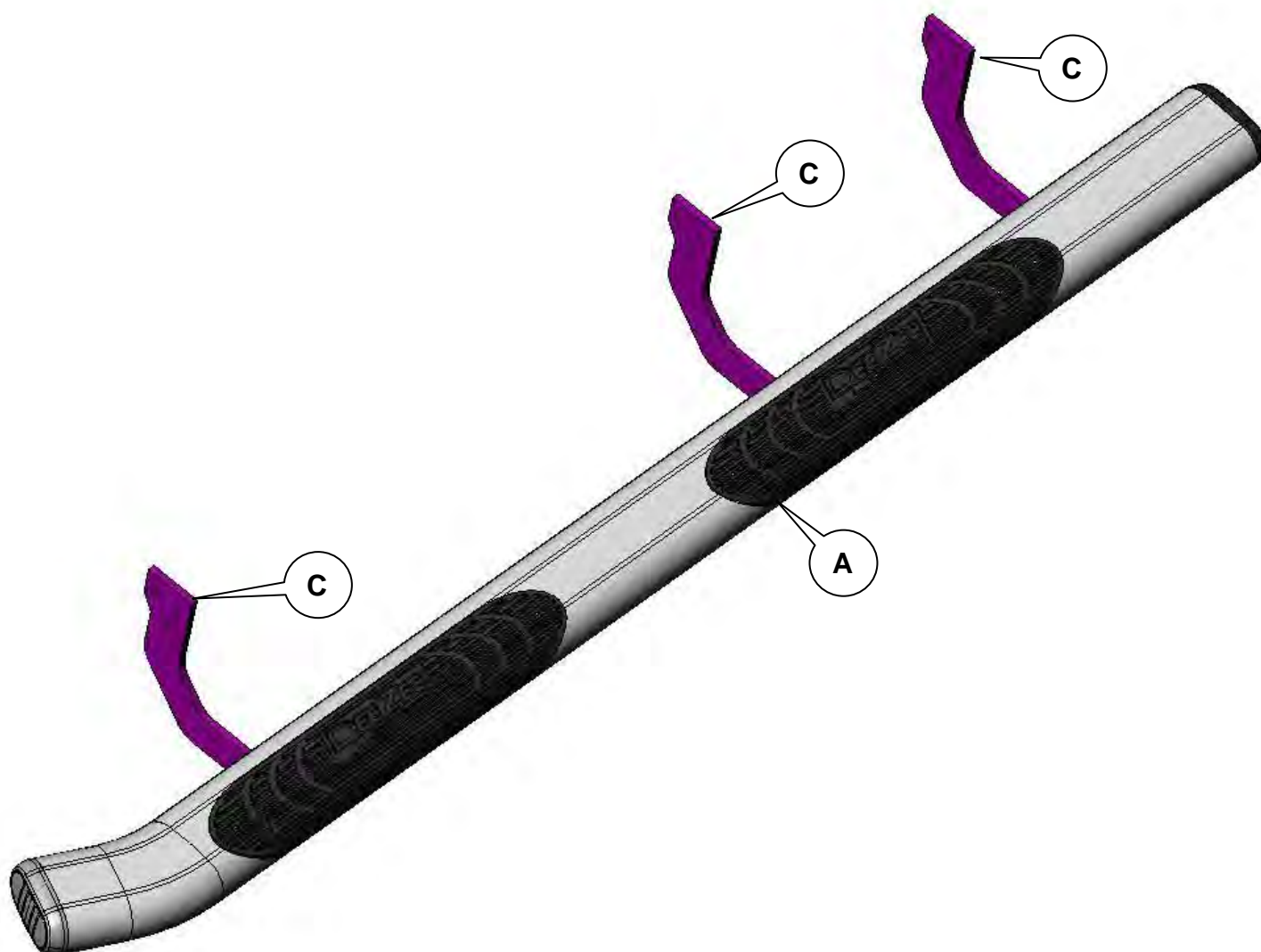
**DZ 17001 / DZ 17501
(1999 – Current) Chevy Extended Cab Pickup**

<div><div>A</div><div>Nerfstep</div><div></div><div>1LH / 1RH</div></div>	<div><div>B</div><div>Rocker Panel Mounting Bracket</div><div></div><div>X6</div></div>	<div><div>C</div><div>Driver Side Mounting Bracket</div><div></div><div>X3</div></div>	
<div><div>D</div><div>Passenger Side Mounting Bracket</div><div></div><div>X3</div></div>	<div><div>E</div><div>8mm X 25mm Flange Head Bolt</div><div></div><div>X12</div></div>	<div><div>F</div><div>8mm Hex Flange Nut</div><div></div><div>X12</div></div>	
<div><div>G</div><div>3/8" x 1 1/4" Hex Head Bolt</div><div></div><div>X4</div></div>	<div><div>H</div><div>3/8" Flat Washer</div><div></div><div>X4</div></div>	<div><div>I</div><div>Offset Threaded Plate</div><div></div><div>X4</div></div>	<div><div>J</div><div>1/4" X 1" Ribneck Carriage Head Bolt</div><div></div><div>X6</div></div>
<div><div>K</div><div>1/4" Flat Washer</div><div></div><div>X6</div></div>	<div><div>L</div><div>1/4" Hex Nut</div><div></div><div>X6</div></div>	<div><div>M</div><div>1/4" x 1" Sheet Metal Screw</div><div></div><div>X4</div></div>	<div><div>N</div><div>6mm Hex Flange Bolt</div><div></div><div>X12</div></div>
<div><div>O</div><div>6mm Washer</div><div></div><div>X12</div></div>	<div><div>Tools Required</div><div><div>Ratchet / Wrench 13mm / 10mm 3/8" 7/16" 9/16"</div><div></div><div><div>Drill Bit sizes 1/4" 3/16"</div><div></div></div></div></div>		

1**Driver Side Nerfstep:**

Place the Driver Side Mounting Brackets (C) onto the Driver Side Nerfstep (A) as shown below and secure into place with the 6mm Hex Flange Bolts (N) and 6mm Washer(O). Leave loose for later adjustment.

Note: Cradle will face towards the rear of the nerfstep.



2

Locate and remove the plastic plugs located at the front inside rocker panel and the middle inside rocker panel as shown below.



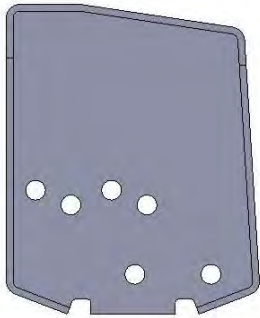
**Front
Location**



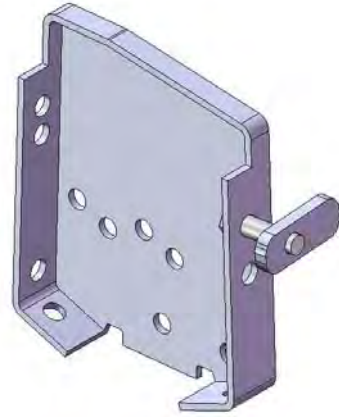
**Middle
Location**

3

Place a 3/8" x 1 1/4" hex head bolt (G) and 3/8" flat washer (H) through the top hole in the rocker panel brackets (B). Place a threaded plate (I) onto the end of the bolt as shown below.



**This side to
rocker panel**



Place the rocker panel bracket assembly up to the plug hole locations in the rocker panel. Slide the threaded plate into plug holes. Center the threaded plate in the hole and then tighten the bolt using a 9/16" wrench / or socket. (Front and Middle Locations Only)



4

Using the bottom hole in the bracket as a guide, drill a ¼" hole through the rocker panel lip as shown below.

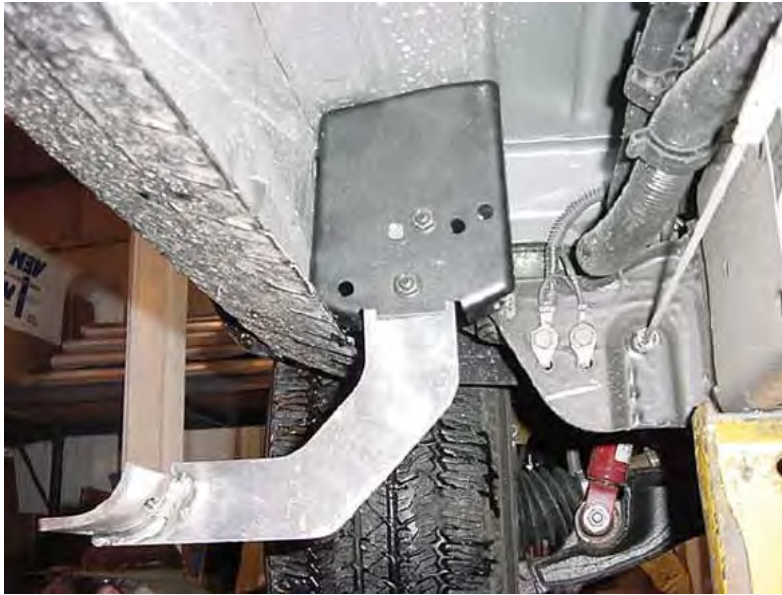


Drill hole here

Secure the bottom of the rocker panel bracket to the rocker panel lip using a ¼" x 1" ribneck carriage head bolt (J), ¼" flat washer (K), and ¼" hex nut (L). Tighten into place using a 7/16" wrench / or socket.

5

Place the nerfstep assembly up to the rocker panel brackets. Secure the mounting brackets to the rocker panel brackets using 8mm x 25mm hex flange bolts (E) and 8mm hex flange nuts (F). (Front and middle locations only)



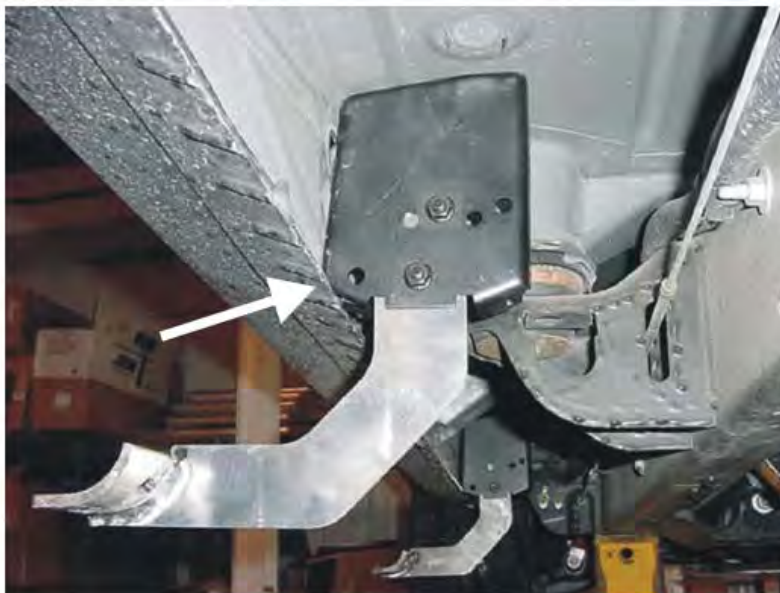
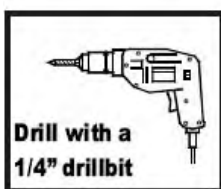
6

Place a rocker panel bracket (B) up to the rear mounting bracket (C) location on the nerfstep. Secure the rocker panel bracket to the nerfstep using 8mm x 25mm hex flange bolt (E) and 8mm hex flange nuts (F).



7

Make sure that the nerfstep is level and then tighten all of the fasteners until snug. The rear rocker panel bracket should be snug against the inside of the rocker panel. You will secure the rear rocker panel bracket to the inside rocker panel by first drilling a 1/4" hole through the rocker panel lip. Secure the bottom of the rocker panel bracket to the rocker panel using a 1/4" x 1" ribneck carriage head bolt (J), 1/4" flat washer (K), and 1/4" hex nut (L).

**8**

Use the top holes in the rocker panel bracket as a guide to drill two 3/16" holes through the inside of the rocker panel. Secure the top of the rocker panel bracket to the rocker panel using 1/4 x 1" sheet metal screws (M).

