

# Britetread Tough Step Installation Instructions

## DZ 26

### (1999 - Current) Ford Superduty Pickup

*Congratulations on your purchase of a quality Dee Zee product. Dee Zee is recognized as having the highest quality running boards and accessories on the market today. We have earned this reputation by offering our customers a product they can be proud to place on their vehicles. Dee Zee meets all the criteria of manufacturing a custom-fit product which guarantees it to be the easiest product to install.*

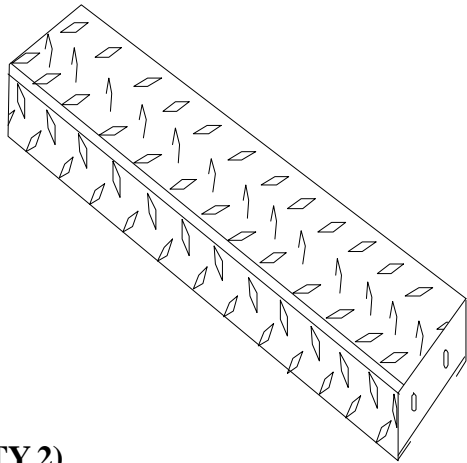
**TOOLS REQUIRED:**

- A Drill with a set of Bits
- A Tape Measure
- Two 9/16" Wrenches
- A Punch
- Locking Pliers
- A Level
- C-Clamps

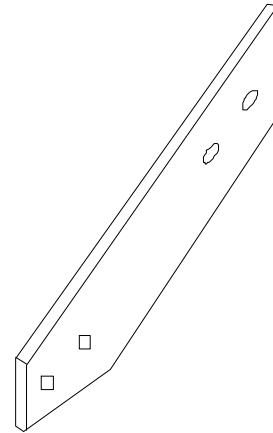
**PARTS LIST:**

	<b>QTY</b>
Tough Steps (T1) .....	2
Aluminum Flat Braces (A1) .....	4
Left Side T-Shaped Mounting Bracket (L1) .....	2
Right Side T-Shaped Mounting Bracket (R1) .....	2
Hardware Bag .....	1

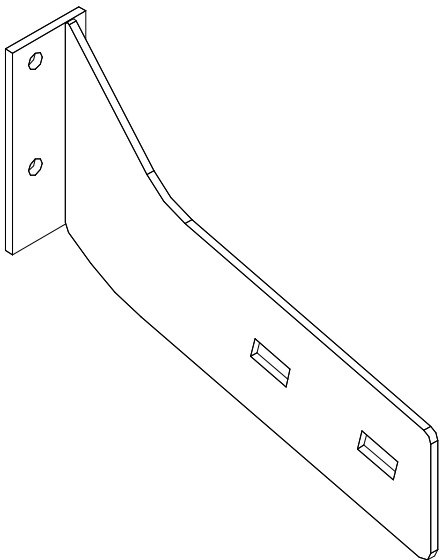
**INSTRUCTIONS:** Please take time to read all instructions carefully before beginning installation.



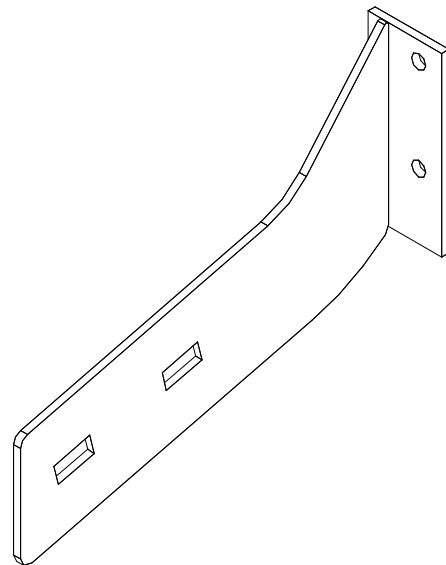
**T1: (QTY 2)**



**A1: (QTY 4)**



**R1: (QTY 2)**



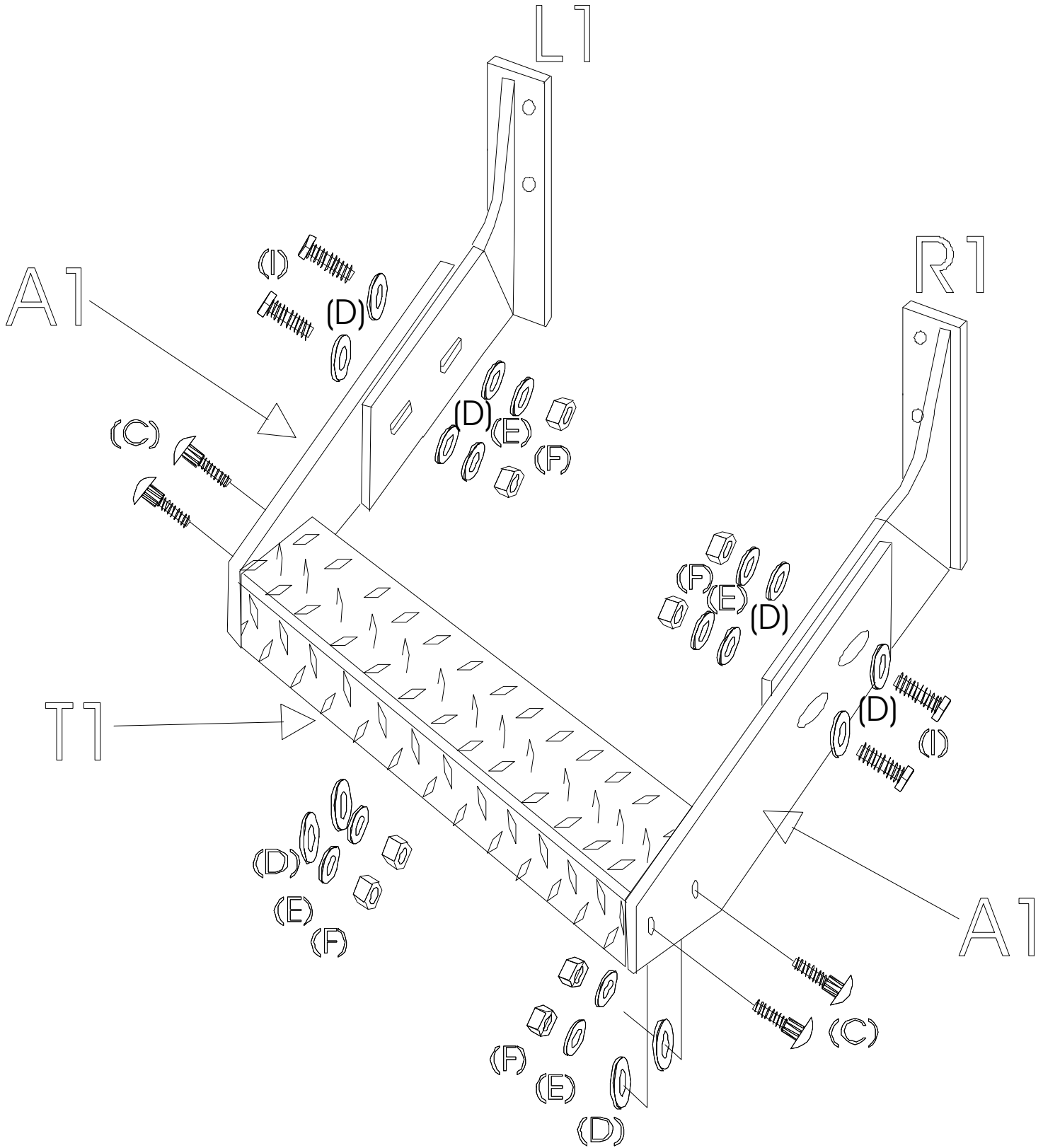
**L1: (QTY 2)**

**STEP 1**

A. Attach an aluminum flat brace (L1) to the left and right side of each step using two 3/8" x 1 1/2 carriage bolts (C), flat washers (D), lock washers (E) and nuts (F) in the pre-punched holes.

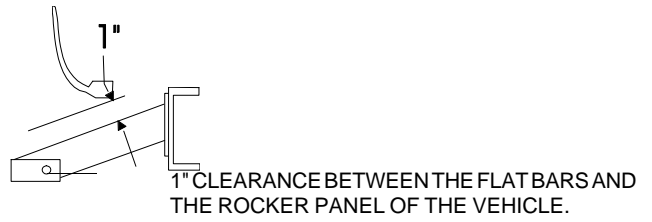
B. Attach one of each of the left and right side mounting brackets (L1 and R1) to each side of the step as shown below using two 1/4" x 1 1/4" hex head bolts (I), washers (D), lock washers (E) and nuts (F) in the slotted holes.

**NOTE: Refer to the drawing below for the proper placement of the brackets and mounting hardware during this installation. All mounting brackets should be attached to the inner faces of the flat bar braces.**



**STEP 2**

Measure the distance between the bottom of the vehicle rocker panel and the top of the aluminum flat bars. There should be a minimum of 1" clearance between the bottom of the rocker panel and the top of the flat bars and the distance should be the same for both the front and rear flat bars. Adjust the bracing as necessary.



**STEP 3**

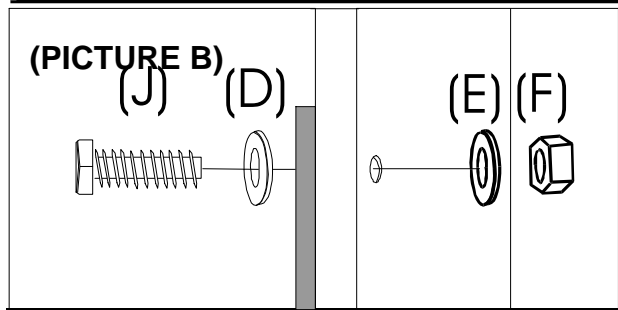
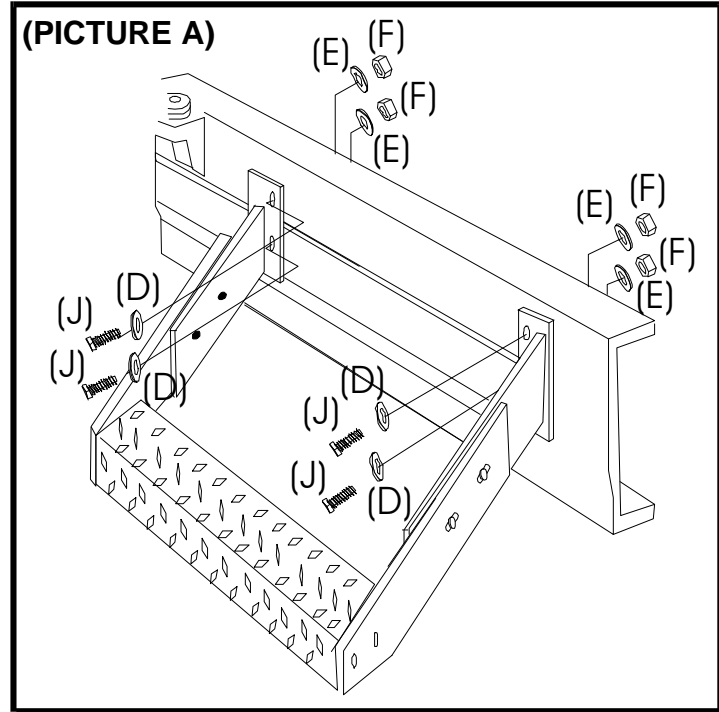
**CAUTION: Before drilling, check the inside of the frame for obstructions (lines, wires, etc.) that may interfere with mounting and then drill holes accordingly.**

(#1) Using (Picture A) on the driver side as a guide, hold the tough step assembly up to the vehicle frame, checking the step to make sure that it is square and level with the vehicle and in the position that you prefer.

(#2) Use a pencil or marker and trace the holes that are in both brackets. This will give you a guide in drilling the mounting holes for the tough step brackets. (Helpful hint: You can use a C-clamp or locking pliers to clamp the brackets to the frame.)

(#3) After marking the frame, move the step assembly out of the way and drill 3/8" holes through each of the marked hole locations.

(#4) Now place the tough step assembly back into place on the vehicle frame and bolt it into place using a 3/8" x 1 1/4" hex head bolt (J) with flat washers (D), lock washers (E) and nuts (F) per hole. {Refer to PICTURE B in the drawing below for the proper placement of the flat washer and the lock washer on the hex head bolt.} Tighten all fasteners until secure using a 9/16" wrench or socket.



**CLEANING INSTRUCTIONS:** To maintain the bright finish of your Dee Zee aluminum steps, clean with a mild detergent.

**WARNING:** It is unlawful and dangerous to ride on running boards or side box boards while vehicle is in motion. It is the sole responsibility of the owner to check for tire clearance.

*\*\*If you should incur any problems with the installation of this product, please feel free to call us at 1-800-779-8222. So that we may better serve you when you call, please have the W/O#, SEQUENCE#, and the DATE from the labels on the outside of the box.*