



**Before returning this product
to the store of purchase**

Contact Dee Zee if you experience the following problems:

- Missing Parts
- Installation Problems/Questions
- Warranty Questions

1.800.779.2102

Hours of operation: 8am - 5pm CST, Mon-Friday

Review complete warranty policy and register your product at:

www.deezee.com/warranty.php

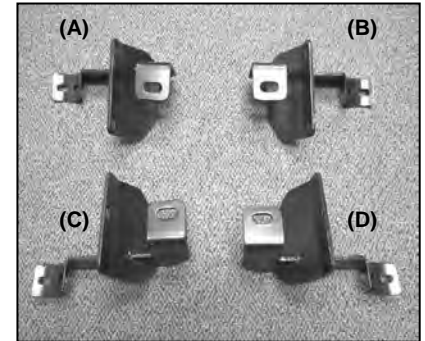
INSTALLATION INSTRUCTIONS

SIDE BARS - 3" ROUND AND 4" OVAL PART#DZ 370641/370643

07-08 JEEP WRANGLER 2 DOOR

PARTS LIST

1 Driver Side Bar	4 10mm Lock Washers
1 Passenger Side Bar	4 10mm Fender Washers
1 Passenger Side Front Mounting Bracket (B)	8 8mm X 20 Hex Bolts
1 Passenger Side Rear Mounting Bracket (D)	8 8mm Lock Washers
1 Driver Side Front Mounting Bracket (A)	8 8mm Flat Washers
1 Driver Side Rear Mounting Bracket (C)	6 6MM X 25MM Allen Bolts
1 4mm Allen Tool	6 6MM Nylock Nuts
4 10mm X 25mm Hex Head Bolts	12 6MM Fender Washers
4 10mm Nut Plates	



PROCEDURE:

- 1. REMOVE CONTENTS FROM BOX. VERIFY ALL PARTS ARE PRESENT. READ INSTRUCTIONS CAREFULLY.**
2. Insert a nut plate into the frame opening on the front driver side with the nut facing up (Figure 1).
3. Locate two factory holes on the front driver side pinch weld. Attach the Front Driver Side Mounting Bracket to the pinch weld using the included (2) 6-1.00mm x 25mm Allen Bolt, (2) 6mm Nylock Nut, and (4) 6mm Fender Washers (Figure 2). Do not tighten at this time.
4. Attach the Front Driver Side Mounting Bracket to the side panel using the included (1) 10-1.50mm x 35mm Hex Head Bolt, (1) 10mm Lock Washer, and (1) Fender Washer (Figure 2). Do not tighten at this time.
5. Repeat steps 2 & 4 for rear driver side, front and rear passenger side Mounting Brackets. **NOTE:** You will only use (1) 6-1.00mm x 25mm Allen Bolt to attach both rear brackets to pinch weld (Figure 3).
6. Position Driver Side Bar onto brackets. Attach Side Bar to Mounting Brackets using the included (4) 8-1.25mm x 25mm Hex Head Bolt, (4) 8mm Lock Washers, and (4) 8mm Fender Washers (Figure 4). Do not tighten at this time.
7. Level and adjust Side Bar and Brackets, then tighten all hardware at this time.
8. Repeat steps 6 & 7 for Driver Side Bar.
9. Do periodic inspections to the installation to make sure that all hardware is secure and tight.

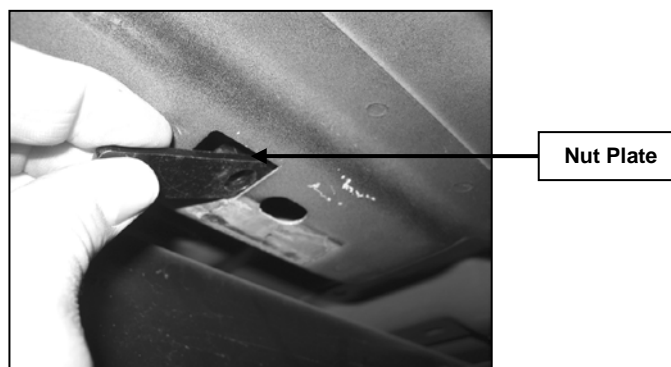
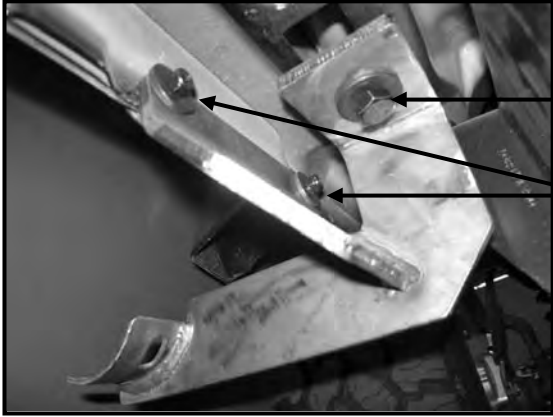


Figure 1

Front Driver Side Shown



(1)10mm x 25mm Hex Head Bolt, (1)10mm Fender washer, & (1)10mm Lock Washer

(2)6mm x 25mm Allen Bolts, (4)6mm Fender washers, & (2)6mm Lock Washers

Figure 2

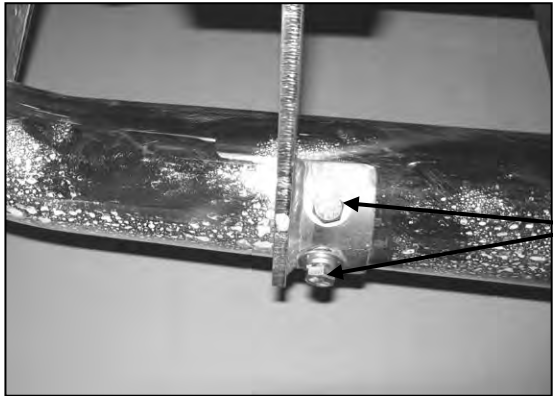
Rear Driver Side Shown



(1)10mm x 25mm Hex Head Bolt, (1)10mm Fender washer, & (1)10mm Lock Washer

(1)6mm x 25mm Allen Bolt, (2)6mm Fender Washer, & (1)6mm Lock Washer

Figure 3



8mm x 20mm Hex Head Bolts, 8mm Fender washers, & 8mm Lock Washers

Figure 4