



**Before returning this product
to the store of purchase**

Contact Dee Zee if you experience the following problems:

- Missing Parts
- Installation Problems/Questions
- Warranty Questions

1.800.779.2102

Hours of operation: 8am - 5pm CST, Mon-Friday

Review complete warranty policy and register your product at:

www.deezee.com/warranty.php

INSTALLATION INSTRUCTIONS

SIDEBAR

05-07 DODGE DAKOTA CLUB CAB

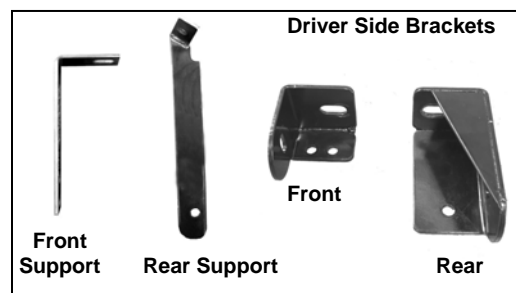
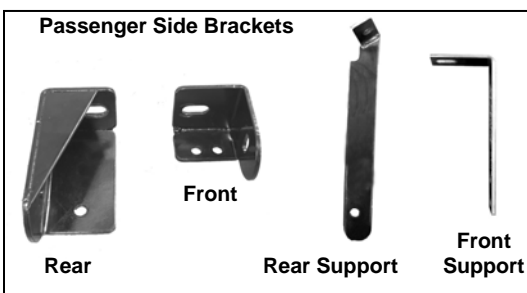
PART NUMBER DZ 37126x

PARTS LIST:

1	Driver/Left Sidebar	4	½" ID x 1 3/8" OD x 3/32" Flat Washers
1	Passenger/Right Sidebar	6	10-1.50mm x 25mm Hex Head Bolts
1	Driver/Left Front Mounting Bracket	12	10mm ID x 21mm OD x 1.5mm Flat Washers
1	Passenger/Right Front Mounting Bracket	6	10mm Nylock Nuts
1	Driver/Left Rear Mounting Bracket	2	12-1.75mm x 90mm Hex Head Bolts
1	Passenger/Right Rear Mounting Bracket	4	12mm ID x 29mm OD x 3mm Flat Washers
2	Front Support Brackets	2	12mm Nylock Nuts
1	Driver/Left Rear Support Bracket	2	8-1.25mm x 25mm Hex Head Bolts
1	Passenger/Right Rear Support Bracket	2	8mm Nylock Nuts
4	½" x 2" Hex Bolts	4	8mm ID x 22mm OD x 1.5mm Flat Washers
4	½" Lock Washers		

PROCEDURE:

1. REMOVE CONTENTS FROM BOX. VERIFY ALL PARTS ARE PRESENT. READ INSTRUCTIONS CAREFULLY BEFORE STARTING INSTALLATION.
2. Remove the passenger front body mount bolt. Locate passenger side front Mounting Bracket and partially hang it to body mount using the factory bolt (**Figure 1**).
3. Locate (1) Front Support Bracket and attach it to already installed front Mounting Bracket using (2) 10mm x 25mm Hex Head Bolts, (2) 10mm Nylock Nuts, and (4) 10mm Flat Washers (**Figure 2**). Attach opposite side of Support Bracket to smaller factory hole in the frame using (1) 12mm x 90mm Hex Head Bolt, (1) 12mm Nylock Nuts, (2) 12mm Flat Washers (**Figure 4 & 5**). Do not tighten at this time.
4. Remove the passenger rear body mount bolt. Locate passenger side rear Mounting Bracket and partially hang it to body mount using the factory bolt (**Figure 6**).
5. Locate (1) Rear Support Bracket and attach it to already installed rear Mounting Bracket using the included (1) 10mm x 25mm Hex Head Bolts, (1) 10mm Nylock Nuts, and (2) 10mm Flat Washers. Attach opposite side of Support Bracket to the factory hole on the inner side of body mount cavity and closer to the frame using (1) 8mm x 25mm Hex Head Bolt, (1) 8mm Nylock Nut, and (2) 8mm Flat Washers (**Figure 7**). Do not tighten at this time.
6. Position passenger Sidebar onto Mounting Brackets. Align holes on the Mounting Brackets with holes on the Sidebar. Secure Sidebar to Mounting Brackets using (2) ½" x 2" Hex Head Bolts, (2) ½" Lock Washers, and (2) 12mm Flat Washers (**Figure 5 & 9**). Do not tighten at this time.
7. Level and align Sidebar; then tighten all hardware at this time.
8. Repeat steps 2-7 for driver Sidebar.
9. Do periodic inspections to the installation to make sure all hardware is secure and tight.



(Passenger Side Front Mounting Bracket Installation Shown)

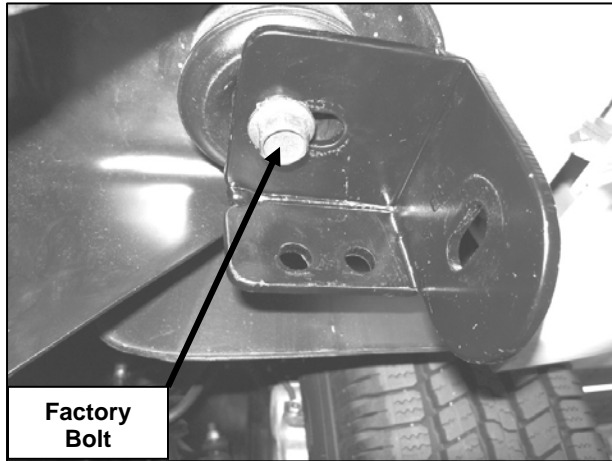


Figure 1

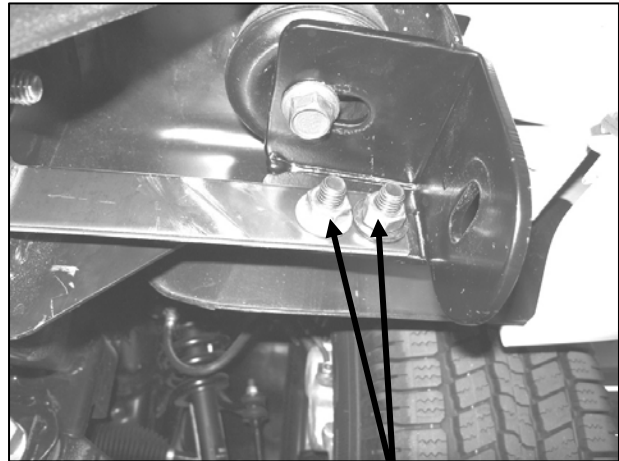
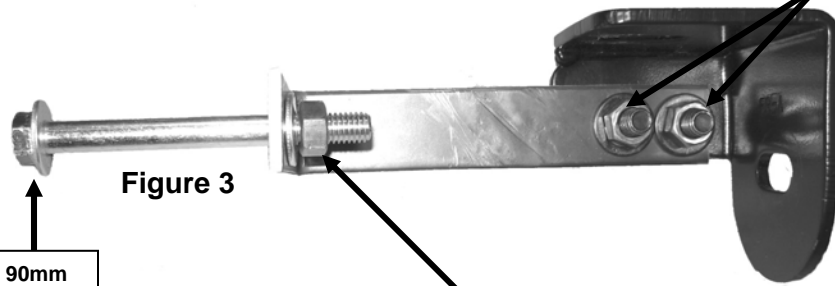


Figure 2



Insert (1) 12mm x 90mm Hex Head Bolt w/ (1) 12mm Flat Washer through inner side of frame

(12mm x 90mm Hex Head Bolt) 12mm Flat Washer & 12mm Nylock Nut

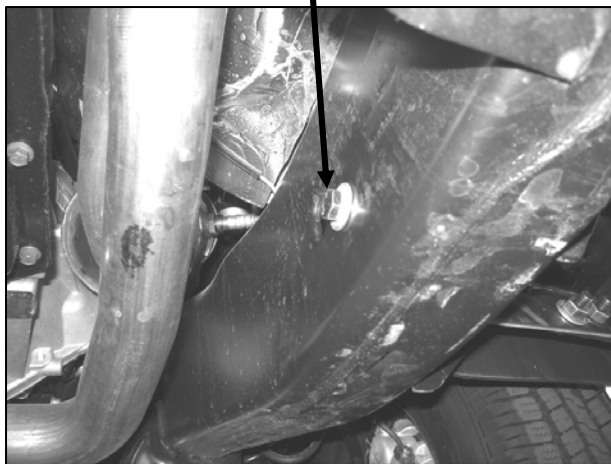


Figure 4

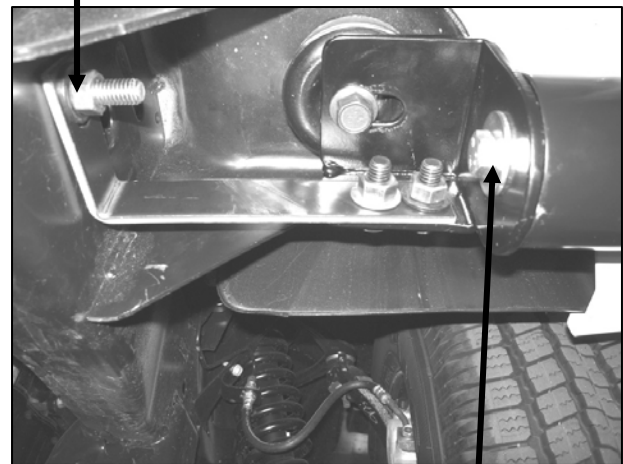


Figure 5

(Passenger Side Rear Mounting Bracket Installation Shown)

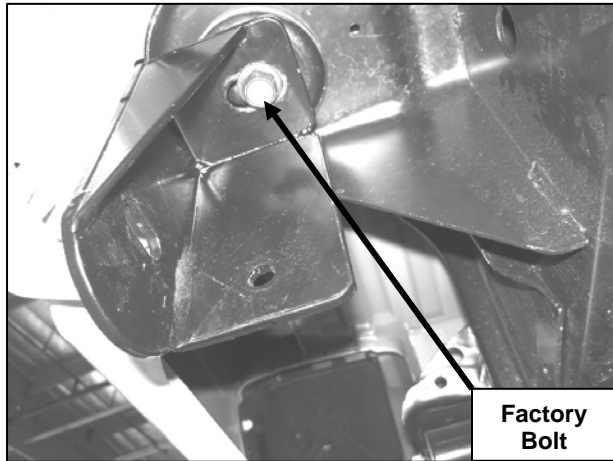


Figure 6

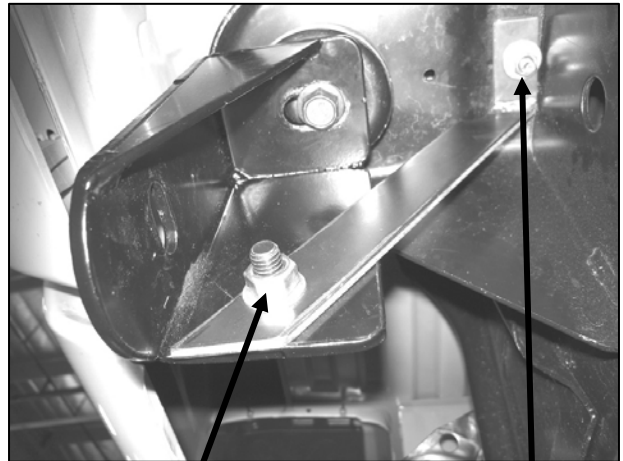


Figure 7

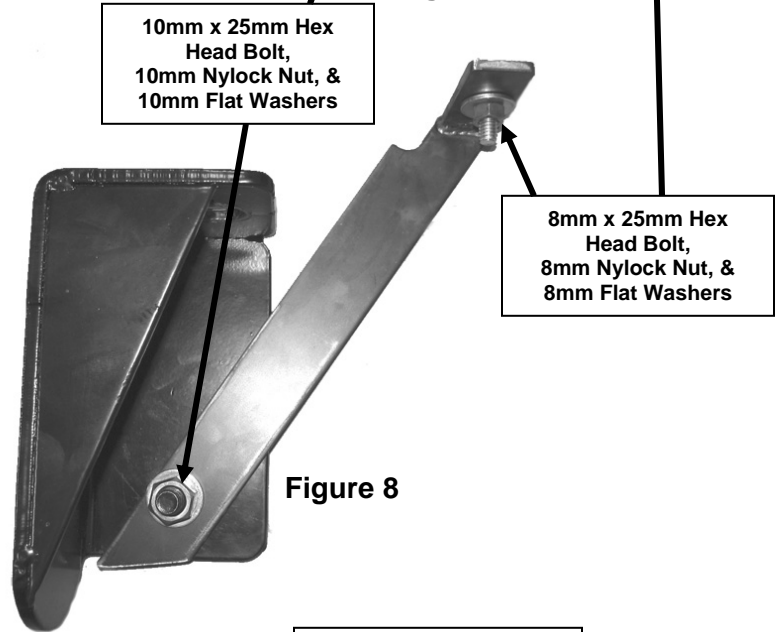


Figure 8

1/2" x 2" Hex Head Bolt, 1/2" Lock Washer, & 1/2" Flat Washer

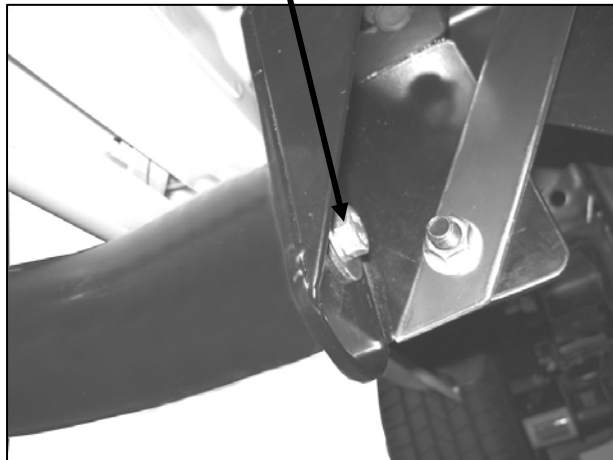


Figure 9

Installation Complete



Figure 10