



**Before returning this product  
to the store of purchase**

**Contact Dee Zee if you experience the following problems:**

- Missing Parts
- Installation Problems/Questions
- Warranty Questions

**1.800.779.2102**

Hours of operation: 8am - 5pm CST, Mon-Friday

Review complete warranty policy and register your product at:

**[www.deezee.com/warranty.php](http://www.deezee.com/warranty.php)**

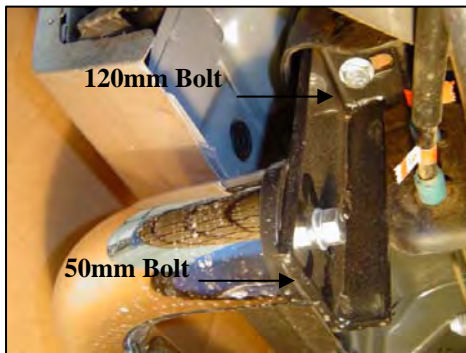
**INSTALLSTION INSTRUCTION**  
**Side Bars PART# DZ 371531/371532/371533**  
**07 Chevy/GMC Silverado/Sierra**  
**Crew Cab**

**NOTE:** Please read this information before installing. Check components received with components listed below.

QTY	DESCRIPTION
1	Side Bar, left side
1	Side Bar, right side
1	Front Support Bracket-left
1	Front Support Bracket-right
2	Center Support Bracket
1	Rear Support Bracket-left
1	Rear Support Bracket-right
4	3" Plastic Ring
6	12mm x 1.75 x 120mm Hex Bolt-zinc plated
14	12mm Flatwasher-zinc plated
10	12mm Split Lockwasher-zinc plated
4	12mm x 1.75 x 50mm Hex Bolt-zinc plated
2	10mm x 1.5 x 25mm Hex Bolt-zinc plated
4	10mm Flatwasher-zinc plated
2	10mm Splitwasher-zinc plated

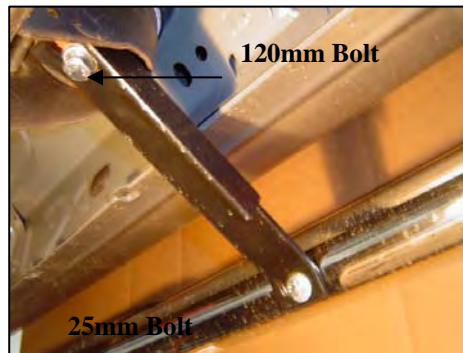
**Step One:** Locate left side brackets, 12mm x 120mm Hex Bolts, 12mm Lockwashers and 12mm Flatwashers. Remove front, center, and rear cab mount bolts located under the cab. Loosely attach brackets to the bottom of the cab mounts with the hardware listed in this step (Figure 1, 2 & 3).

**Rear Bracket**



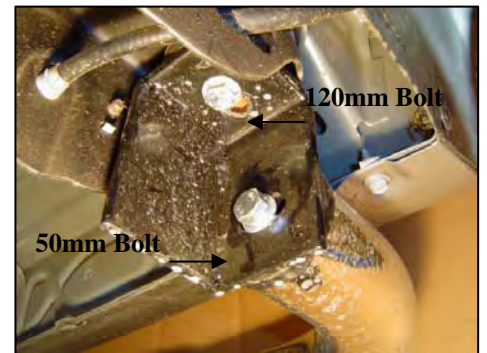
**Figure 1**

**Center Bracket**



**Figure 2**

**Front Bracket**



**Figure 3**

**Step Two:** Secure the side bar to the front and rear brackets using the 12mm x 50mm Hex Bolts, Lockwashers and Flat Washers provided. Secure the Center Bracket to the Side Bar using 8mm x 25mm Hex Bolts, Lockwashers and Flatwashers provided. After checking to make sure the sidebar is level and square with the side of the vehicle, completely tighten all hardware.

**Step Three:** Repeat steps one and two on opposite side of vehicle.