



**Before returning this product  
to the store of purchase**

**Contact Dee Zee if you experience the following problems:**

- Missing Parts
- Installation Problems/Questions
- Warranty Questions

**1.800.779.2102**

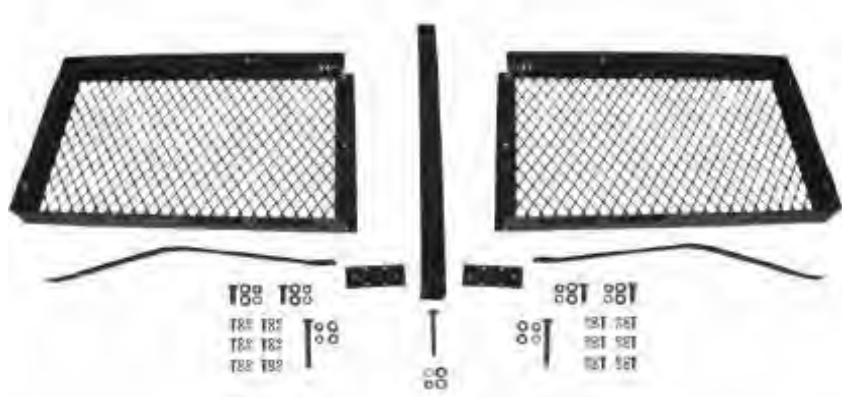
Hours of operation: 8am - 5pm CST, Mon-Friday

Review complete warranty policy and register your product at:

**[www.deezee.com/warranty.php](http://www.deezee.com/warranty.php)**

# Installation Instructions

## Rear Receiver Rack DZ 760082



### Included Components:

- (2) Rack Trays
- (1) 2" Receiver Center Bar
- (2) Brace Brackets – curved
- (24) M6 (10mm) Flat Washer
- (12) M6 (10mm) Lock Washer
- (12) M6 (10mm) Nylock® Nut
- (12) M6 (10mm) Hex Head Bolt
- (2) Rack Tray Connecting Plate
- (14) M10 (16mm) Flat Washer
- (7) M10 (16mm) Lock Washer
- (3) M10 X 75mm Hex Head Bolt
- (4) M10 X 25mm Med. Hex Head Bolt
- (3) M10 (16mm) Hex Head Nut

### Tools Needed:

- (1) 16mm socket
- (1) Adjustable Crescent wrench
- (1) 10mm socket
- (1) Socket Wrench

### Important Notice:

This rack has been supplied with all needed hardware for proper assemble. Rack can be installed into any standard 2" receiver. Please note that receiver pin is **NOT** supplied with rack and will needs to be purchased separately.

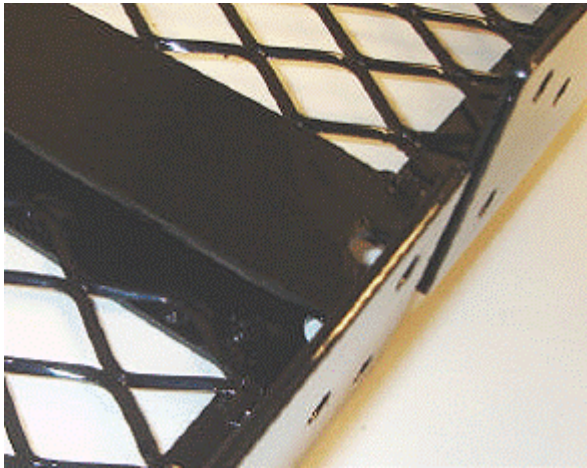
**CAUTION: NEVER EXCEED THE TONGUE WEIGHT CAPACITY OF YOUR HITCH – Receiver Rack is rated to 200Lbs evenly distributed.**



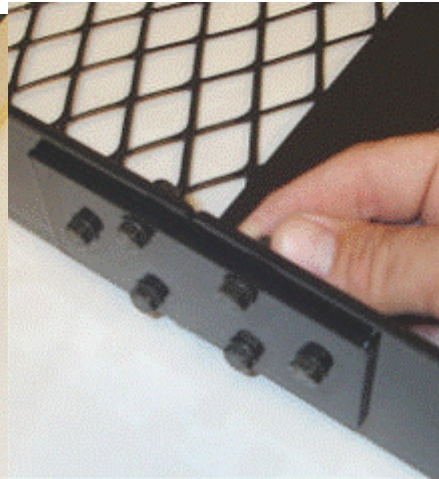
## Installation Instructions:

**(Step1):** Place Rack Trays onto level floor. Overlap Trays as shown in **(Fig.1)**. Position Rack Tray Connector plates using M6 (10mm) bolts, flat washers, lock washers and Nylock® nuts as shown in **(Fig.2)**. Insert bolt from the outside using one flat washer. From the inside place one flat washer; one lock washer and one nut onto bolt and hand tighten.

**(Fig.1)**



**(Fig.2)**



**(Step2):** With connector plates in position place rack on its side and place the 2” Receiver Bar to the bottom of the rack. Align the three mounting holes **(Fig.3)**. Install the one M10 X 75mm (Full Thread) Bolt and one M10 (16mm) Flat Washer from the inside of the rack through the center hole. Attach one M10 (16mm) Flat Washer, one 10M (16mm) Lock Washer, and one 10M (16mm) Hex Head Nut and hand tighten **(Fig.4-5)**.

**(Fig.3)**



**(Fig.4)**



**(Fig.5)**



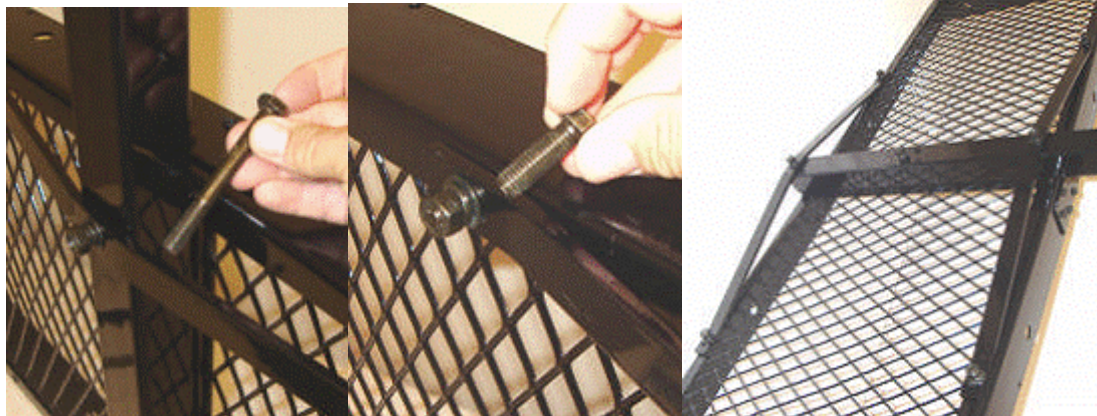
**(Step3):** Attach upper Brace Bracket to Receiver Center Bar using one M10 X 75mm (1/4 Thread) Bolt. Place washers and nuts in same sequence used in step 2. Lock Washer and Nut should be mounted to the bottom of the Receiver Tube. Repeat step for lower Brace Bracket **(Fig.6)**. Attach the Brace Bracket to the Rack Tray **(Fig.7)**. Each side of the Brace Bracket will require one M10 X 25mm Bolt with one Flat Washer inserted from the inside of Rack Tray and through Brace Bracket. One M10 (16mm) Flat Washer,

one M10 (16mm) Lock Washer and one M10 (16mm) Nut will be installed to the bottom of the Brace Bracket (**Fig.7**). Repeat steps for all Brace Bracket Tray mounts on the top and bottom (**Fig.8**). Hand tighten.

(**Fig.6**)

(**Fig.7**)

(**Fig.8**)

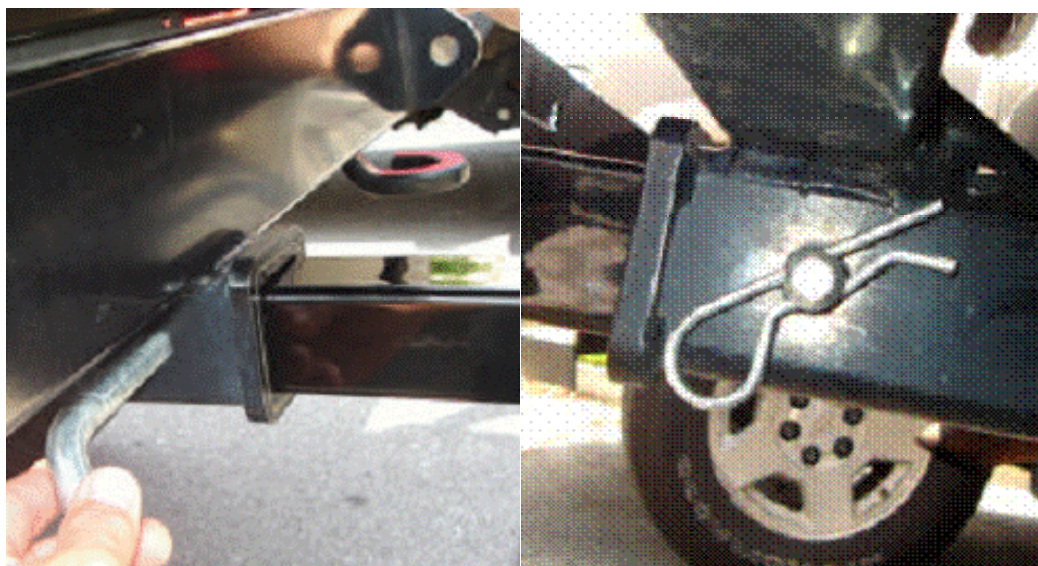


(**Step4**): With all bolts installed proceed to tighten all bolts until secure.

(**Step5**): Insert Receiver Rack into receiver hitch of the vehicle (**Fig.9-10**) using only a certified hitch pin (**NOT INCLUDED**). Failure to use a certified hitch pin may cause injury and or damage to your vehicle, other vehicles, and cargo.

(**Fig.9**)

(**Fig.10**)



**All bolts and nuts should be tightened and secured prior to installing, adding cargo or departing. Always secure your cargo with some type of tie down system to ensure that cargo does not fall off Receiver Rack. DO NOT place valuables or any other items on the Receiver Rack that could be damaged by adverse weather or road debris. CHECK EXHAUST location prior to adding cargo. Prolonged exposure to high temperature exhaust could result in damage to cargo or possible a fire hazard. It is the user's responsibility to properly secure cargo and check for listed hazards prior to use. NEVER exceed the weight limit of the Receiver Rack (200Lbs – evenly distributed).**