



MX-356-02
MX-356-02B
MX-391-02
MX-391-02B

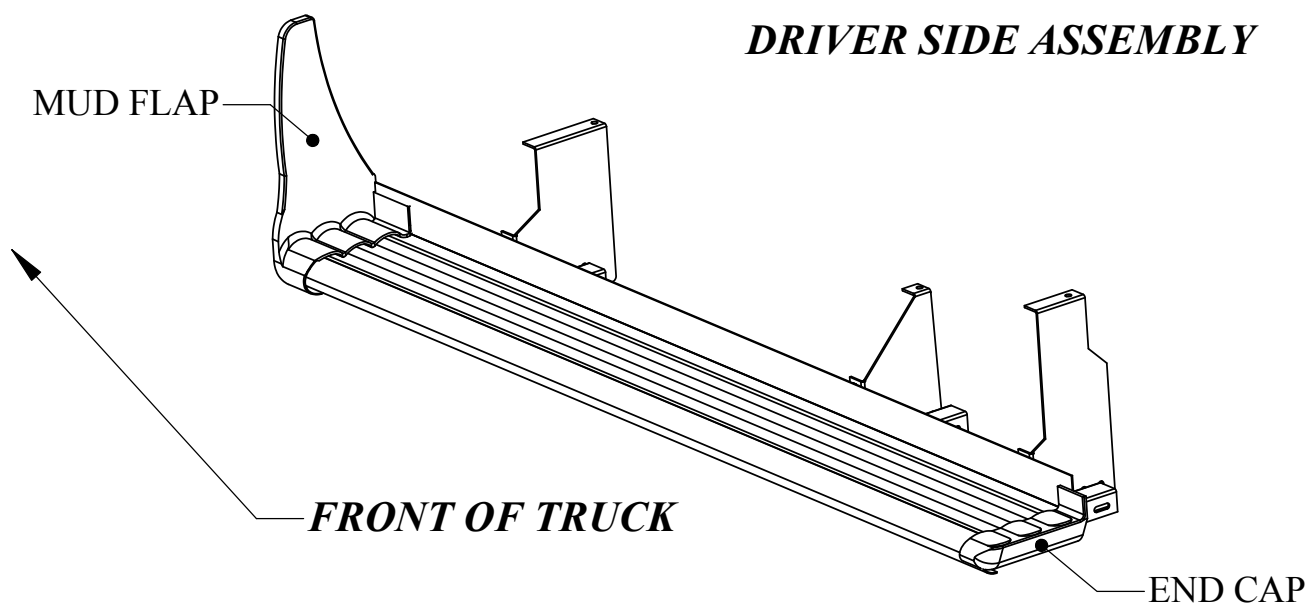
2002 Dodge Ram
Installation Instructions
Read Carefully before Installing
Std. Cab and Crew Cab

Section A
Bracket installation.

1. Measure back from the front of the pinch weld using the measurements noted below and mark the pinch weld at these locations.
2. Hold the brackets up to the pinch weld at these locations, they must be held up tight to the cab supports and tight to the pinch weld. Mark the pinch weld and the cab supports through the holes in the bracket, and then **drill a 9/32"** hole at each location. See figure A for bracket identification.
3. Bolt the brackets to the pinch weld with a 1/4" carriage bolts and nuts.
4. Bolt the top of the bracket to the cab supports with 5/16" thread cutter bolts.

Bracket location

	Front	Center	Rear
Std. Cab	11 1/2"	41 1/2"	56"
Crew Cab	11 1/2"	41 1/2"	74"



Section B

Running board setup

CAUTION Care must be taken not to scratch mud flaps on sharp objects.

1. Install one square head bolt for each bracket in each track on the underside of the running board.
2. Install a mud flap on one end of the board and an end cap on the other using the 5/16" x 1" black bolts. Thread the bolts through the holes and then into the track, the bolts will cut their own threads in the track, do not over tighten these bolts.

Bolt the horizontal channels to the bottom of boards using the square head bolts already placed in the track with 1/4" nuts. Do not tighten at this time; leave loose enough to be able to slide the channel.

Section C

Installing the boards to the vehicle.

1. If the vehicle has flares, check to see if there is enough clearance for the board, trim with a utility knife if necessary.
2. Position the board on the vehicle with the mud flap tight to the wheel well, **(CAUTION do not slide the mud flap across the screw heads inside the wheel well as this will scratch them)**, use locking pliers to hold it in place by clamping the channels to the vertical brackets.
3. Bolt the channels to the vertical brackets with 5/16"x 3/4" bolts and 5/16" nuts. Do not tighten these bolts at this time leave finger tight.
4. Set the board level with the vehicle and make sure that the mud flap is tight to the wheel well. Also check the board to see if it is parallel with the pinch weld, now tighten the bolts. Tighten the bolts holding the channels to the board first, then the bolts holding the channels to the vertical brackets. Note not all bolts are used in every set of running boards.

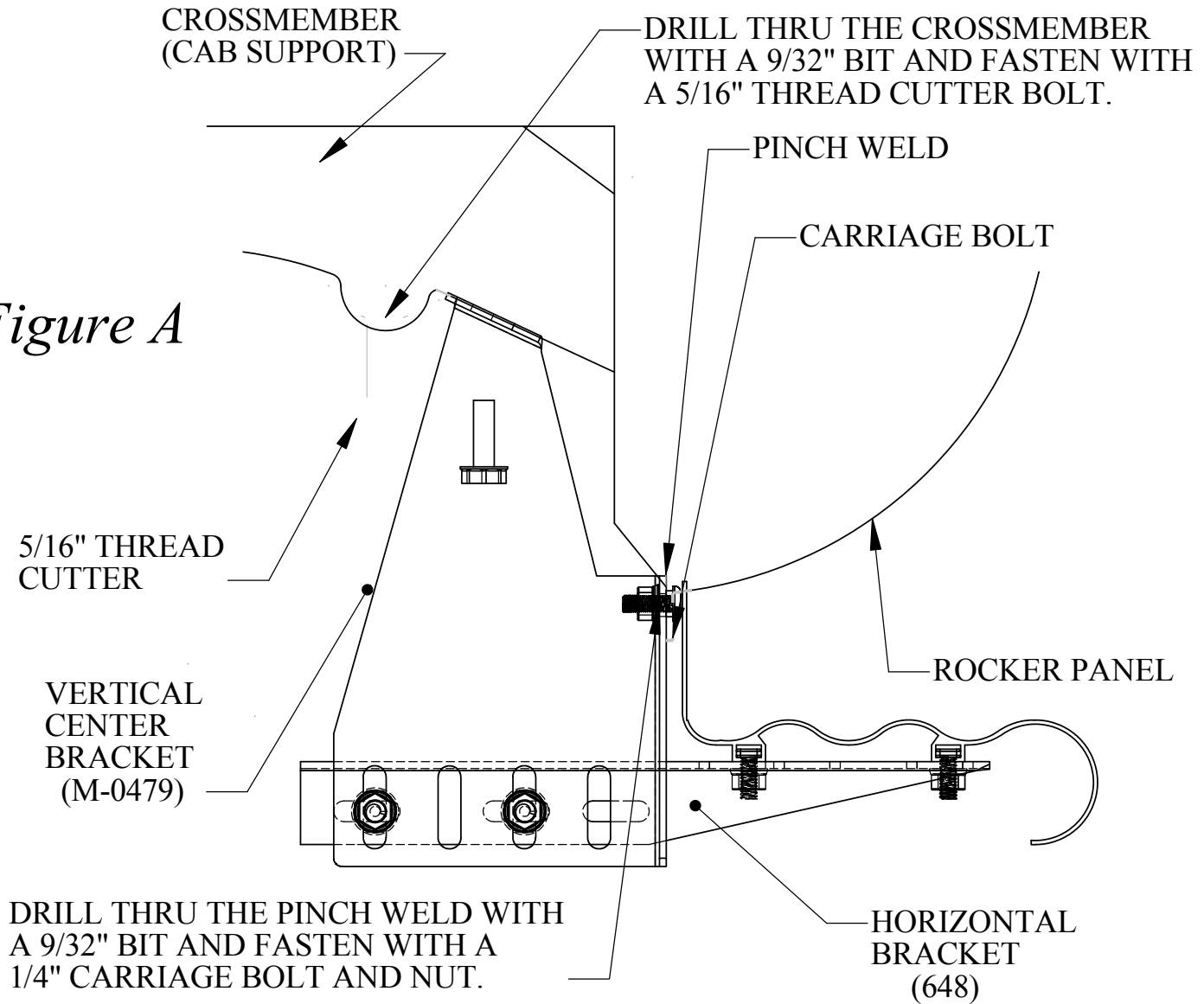
Section D

Securing the mud flap to the wheel wells.

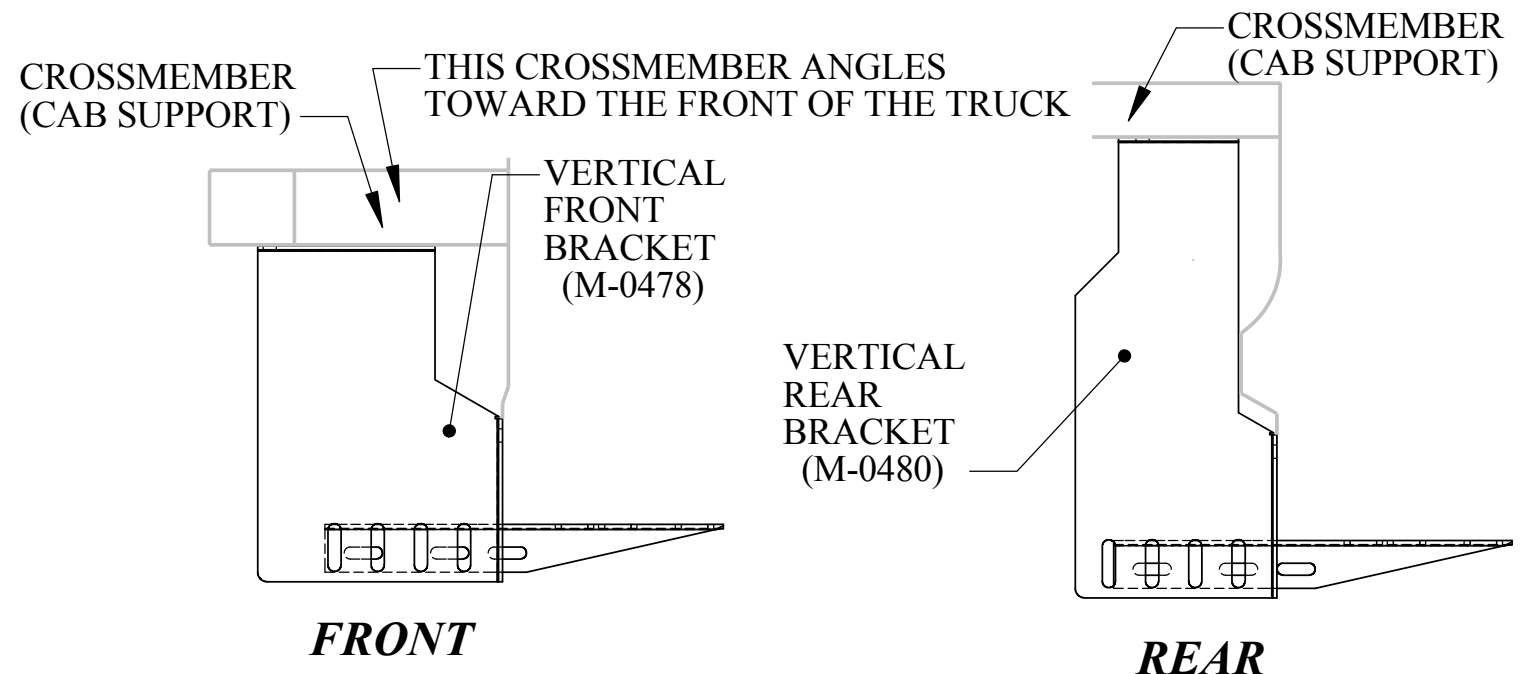
1. Starting at the bottom drill a 1/8" hole in three places through the mud flap and the wheel well. Drill and secure each location with a # 8 sheet metal screw before drilling next location.

CENTER BRACKET ASSEMBLY

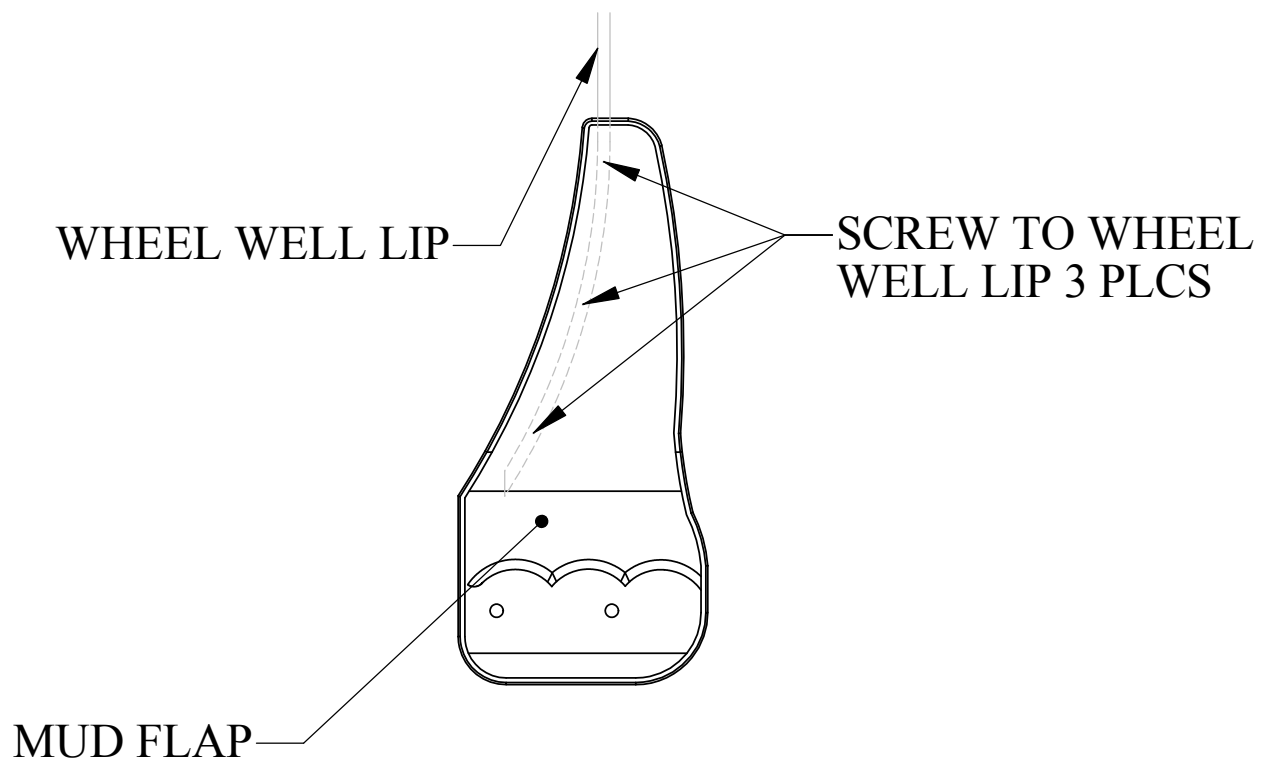
Figure A



THE FRONT AND REAR ASSEMBLIES WILL BE IDENTICAL EXCEPT FOR THE VERTICAL BRACKETS AND THE SHAPE OF THE CROSSMEMBER



BOM MX RUNNING BOARDS BRITE & BLACK					
PART#	DESCRIPTION	MX-356-02	MX-356-02B	MX-391-02	MX-391-02B
DEM-131-164	58" BOARD	2			
DEM-131-164B	58" BOARD		2		
DEM-131-164	77 3/4" BOARD			2	
DEM-131-164B	77 3/4" BOARD				2
8134	STEP PAD	2	2	4	4
8130R	MUD FLAP	1	1	1	1
8130L	MUD FLAP	1	1	1	1
8132R	END CAP	1	1	1	1
8132L	END CAP	1	1	1	1
M-0478	VERTICAL BRACKET	2	2	2	2
M-0479	VERTICAL BRACKET	2	2	2	2
M-0480	VERTICAL BRACKET	2	2	2	2
648	CHANNEL	6	6	6	6
1116	BOLT PACK	1	1	1	1
1114	BOLT PACK	3	3	3	3
P-0050	BOLT PACK	3	3	3	3
10274	INSTRUCTIONS	1	1	1	1



7225 N. State Rd. 9
Howe, Indiana. 46746
Phone # 1-800-334-4447 Fax # 1-800-368-4341