



## ***Installation Instructions***

### **FTS51001 99-up GM K1500 Multiple Frt. Shock System**

#### **FTS51001 PARTS LIST-**

1	FT20041	Upper Hoop- DRV
1	FT20042	Upper Hoop- PASS
2	FT20043	Lower Mount
1	FT20046	Hardware Kit

#### **SHOCKS REQUIRED- (NOT INCLUDED)**

4- Fabtech FTS7052 Shocks

#### **TOOL LIST- (NOT INCLUDED)**

Assorted Metric & SAE Sockets & Wrenches  
Drill, 3/8" Drill Bit, Torque Wrench

#### **FT20046 HARDWARE LIST**

4	1/2-13 x 6" Hex Cap Bolt
4	1/2"-13 Nyloc Lock Nut
8	1/2" SAE Flat Washer
8	1/2" USS Washer
8	3/8-16 x 1-1/4" Hex Cap Bolt
4	3/8-16 x 2" Hex Cap Bolt
4	3/8-16 x 2-3/4" Hex Cap Bolt
4	3/8"-16 x 1-1/2" Hex Cap Bolt
20	3/8-16 Steel Lock Nut
40	3/8" SAE Flat Washer
1	Thread Locking Compound

**READ ALL INSTRUCTIONS THOROUGHLY FROM START TO FINISH BEFORE BEGINNING INSTALLATION! IF THESE INSTRUCTIONS ARE NOT PROPERLY FOLLOWED, SEVERE FRAME, DRIVELINE AND / OR SUSPENSION DAMAGE MAY RESULT. CHECK FOR FRAME AND SUSPENSION DAMAGE PRIOR TO INSTALLTION. THIS KIT DOES NOT REQUIRE WELDING FOR INSTALLATION. DO NOT WELD ANY OF THESE COMPONENTS. THE INSTALLATION OF THIS KIT SHOULD BE PERFORMED BY A PROFESSIONAL MECHANIC.**

**NOTE: THIS SHOCK SYSTEM IS ONLY COMPATABLE WITH A VEHICLE WITH A FABTECH SUSPENSION SYSTEM OR STOCK SUSPENSION**

#### ***INSTALLATION-***

1. With the vehicle on flat ground, set parking brake and block rear tires. Jack up front of vehicle and support under frame with jack stands. Remove driverside tire and wheel.
2. Working from the driver side of the vehicle, locate and remove the steering box bolt on the outside of the frame rail closest to the upper control arm.
3. Locate and remove the nut and washer that retains the stock lower control arm pivot bolt towards the rear of the vehicle. Do not remove the bolt, only the nut and washer.

4. Locate the driverside upper shock hoop and place the rear leg mount over the stock rear lower control arm bolt and attach with the stock nut and washer. Leave loose. SEE BELOW PHOTO



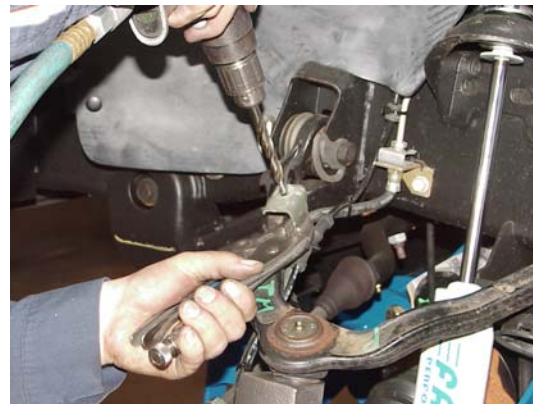
5. Place the front leg of the hoop over the removed steering box bolt hole and reinstall the stock steering box bolt, nut and washer. Leave loose.

6. Pushing on the top of the hoop mate the upper mounting tabs to the top of the upper control arm pocket and centerpunch holes. Drill out to 3/8" diameter. Install 3/8" x 1-1/4" bolts, nuts and washers. Torque to 25LBS. SEE BELOW PHOTOS

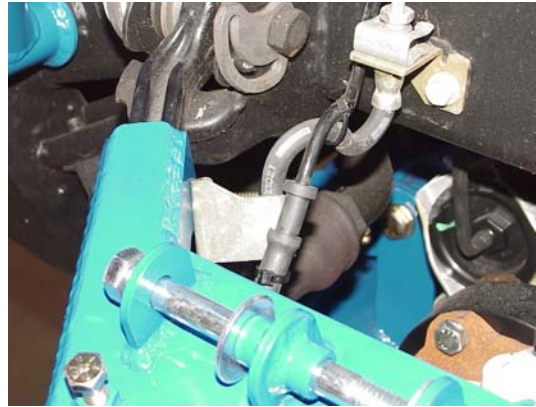
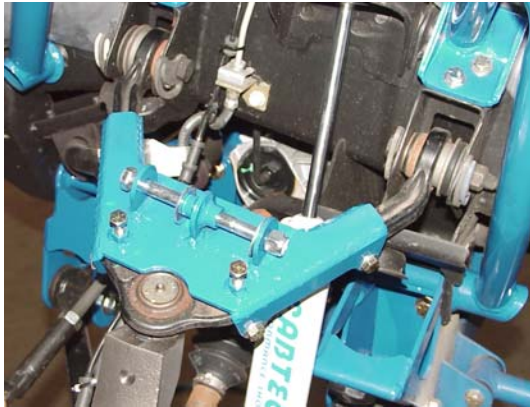


7. Tighten the steering box bolt to 90LBS and the lower control arm rear bolt to 90LBS

8. Locate the brake hose retaining clamp on the upper control arm and remove from arm. Clamp the bracket securely and drill out bolthole to 3/8" diameter. SEE BELOW PHOTOS

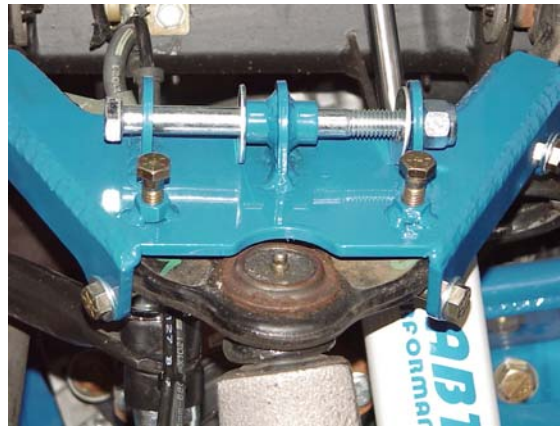


9. Locate the lower shock mount and place over the factory upper control arm. Using 3/8" x 2" cross bolts, nuts and washers attach arm with the brake hose retaining clamp to the inside of the control arm. Note must use 3/8" x 2" bolts on the mount eyes closest to frame to allow for shock clearance. Use 3/8" x 2-3/4" bolts, nuts and washers for the mount holes to the outside of the vehicle under the control arm. Leave all bolts loose. SEE BELOW PHOTOS



10. Locate and thread 3/8" x 1-1/2" bolt with thread locking compound into the welded nuts on the top of the lower shock mount and tighten against the stock control arm. Snug up bolts only, do not over tighten.

11. Torque the 3/8" cross bolts to 25LBS



12. Locate and install Fabtech shocks part number FTS7052 using 1/2" x 5-3/4" bolts, nuts and washers. Torque bolt to 35LBS.



13. Repeat same procedure for passenger side. Except step 2, remove the factory differential mounting bolt on the side of the frame rather than the steering box bolt. For ease of installation cut 5/8" off the end of the rear differential mounting bolt that protrudes through the frame. Follow all other steps the same as the driverside.

**RETORQUE ALL NUTS, BOLTS AND LUGS AFTER 50 MILES AND PERIODICALLY THEREAFTER.**

For technical assistance call: 714-990-8850

Fabtech Motorsports Suspension Products

Fabtech Motorsports warrants to the original retail purchaser who owns the vehicle on which the product was originally installed. Fabtech Motorsports does not warrant the product for finish, alterations, modifications and/or installation contrary to Fabtech Motorsports' instructions. Fabtech Motorsports suspension products are not designed nor intended to be installed on vehicles used in race applications or for racing purposes or for similar activities. (A "RACE" is defined as any contest between two or more vehicles, or any contest of one or more vehicle against the clock, whether or not such contest is for a prize). This warranty does not include coverage for police or taxi vehicles, race vehicles, or vehicles used for government or commercial purposes. Also excluded from this warranty are sales outside of the United States of America. Fabtech suspension products that increase the vehicle's ride height may greatly increase the risk of vehicle roll over. Vehicles should be operated in a safe manner at all times as not to cause a roll over or an accident resulting in injury or death. Fabtech Motorsports' obligation under this warranty is limited to the repair or replacement, at Fabtech Motorsports option of the defective product. Any and all costs of removal, installation or re-installation, freight charges, incidental or consequential damages are expressly excluded from this warranty. This warranty is expressly in lieu of all other warranties expressed or implied. This warranty shall not apply to any product that has been subject to accident, negligence, alteration, abuse or misuse. Fabtech Motorsports does not warrant products not manufactured by Fabtech Motorsports. Please see Fabtech's Jobber Price Sheet for additional conditions and warnings.

Instruction Sheet Part #- FT51001i

04/03/02