



PERFORMANCE EXHAUST SYSTEMS

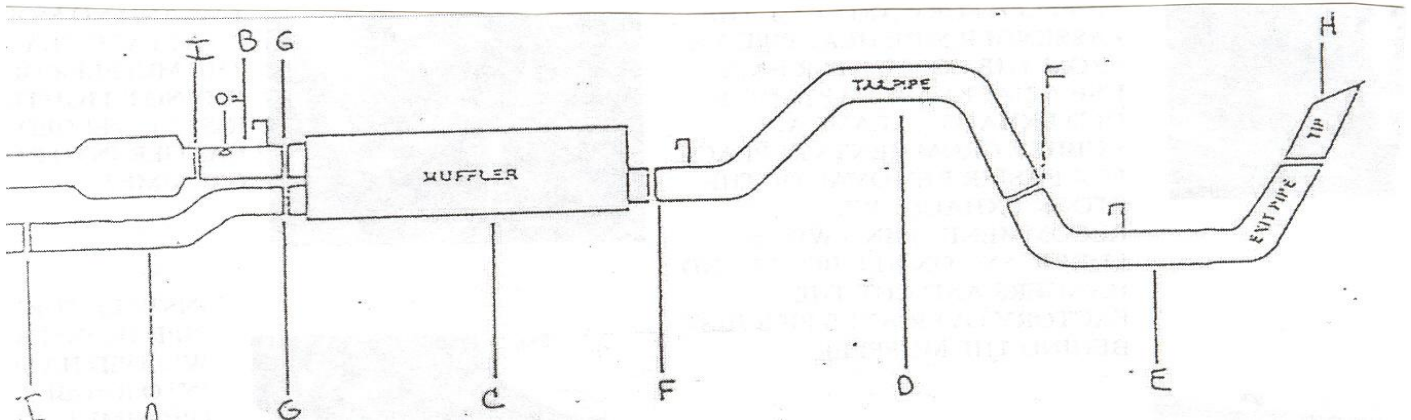
INSTRUCTION MANUAL

CAT-BACK SINGLE EXHAUST SYSTEM

CHEVY SILVERADO TRUCK 2500 6.0L 2/4WD

EXTENDED CAB, SHORT BED

PART # 315523



ITEM	PART #	QTY	DESCRIPTION
A	700168	1	2.5" DRIVERSIDE HEADPIPE
B	700169	1	2.5" PSGR. SIDE HEADPIPE W/ HANGER & O2
C	758255	1	SUPERFLOW MUFFLER
D	700158	1	3" OVERAXLE TAILPIPE
E	700159	1	3" EXIT PIPE
F	OHD300	2	3" CLAMP
G	5757	2	2-1/2" CLAMP
H	500360	1	3-1/2" STAINLESS TIP
I	5758	2	2-3/4" CLAMP

WILL NOT FIT A HEAVY DUTY.

Thank you for purchasing our GIBSON PERFORMANCE EXHAUST SYSTEM for your vehicle. If you need further assistance please do not hesitate to call our Technical Department at (800) 528-3044, Monday through Friday, 8:00 am to 5:00 pm.

EXHAUST INSTRUCTIONS #315523

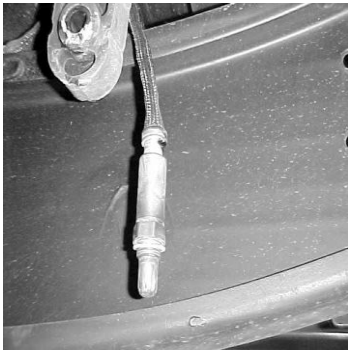
WHEN INSTALLING THIS EXHAUST SYSTEM MAKE SURE TO USE ALL THE PROPER SAFETY PRECAUTIONS. USE JACK STANDS WHEN UNDER TRUCK, SET PARKING BRAKE, BLOCK TIRES AND USE SAFETY GLASSES AND GLOVES. DO NOT WORK WITH HOT PIPES

SUGGESTED TOOLS

7/8 WRENCH, 9/16 SOCKET, 15MM SOCKET 1/2 SOCKET, HACKSAW, JACKSTAND, WD-40, ANTI-SEIZE

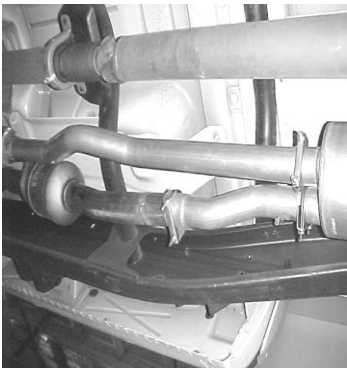
LAY OUT THE GIBSON EXHAUST SYSTEM ON THE FLOOR AND COMPARE ALL PART NUMBERS WITH THE MANUAL.

UNBOLT THE FACTORY O2 SENSOR BEHIND THE PASSENGER SIDE CONVERTER ON THE STOCK HEADPIPE. REMOVE YOUR STOCK EXHAUST BY UNBOLTING THE DRIVERSIDE HEADPIPE APPRX 36" FROM THE FRONT OF THE MUFFLER FORWARD. CUT THE PASSENGER SIDE HEADPIPE 3 1/2" FROM THE CONVERTER BACK. USE A HACKSAW TO REMOVE OLD EXHAUST. LEAVE ALL RUBBER GROMMETS IN PLACE. FOR EASIER REMOVAL OF THE STOCK EXHAUST WE RECOMMEND USING WD-40 LUBRICANT ON ALL BOLTS AND HANGERS AND CUT THE FACTORY OVER AXLE PIPE JUST BEHIND THE MUFFLER.



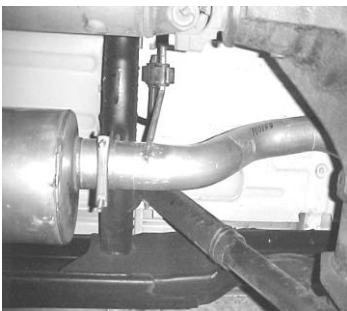
SLIP OVERAXLE TAILPIPE #D INTO THE OUTLET OF THE MUFFLER NO LESS THAN 1 1/2" AND NO MORE THAN 2". ATTACH CLAMP #F AT THE MUFFLER OUTLET (**DO NOT TIGHTEN**). INSERT WELDED HANGER INTO RUBBER GROMMET.

INSTALL DRIVERSIDE HEADPIPE #A AND PASSENGER SIDE HEADPIPE #B WITH O2 SENSOR, OVER THE FACTORY HEADPIPES NO LESS THAN 1 1/2" AND NO MORE THAN 2". INSERT WELDED HANGER INTO RUBBER GROMMET. USE CLAMPS #I TO CLAMP DOWN HEADPIPES.



INSTALL TURNOUT PIPE #E. INSERT WELDED HANGER INTO RUBBER GROMMET. ATTACH CLAMP #F TO CONNECT TAILPIPE TO TURN OUT PIPE. (**DO NOT TIGHTEN CLAMP**) ADJUST TURNOUT PIPE SO IT EXITS ON THE SIDE OF THE VEHICLE AT A LEVEL POSITION.

INSTALL MUFFLER #C WITH THE OUTLET LOCATED AT 12:00 O'CLOCK. ATTACH CLAMP #G AT THE MUFFLER INLETS (**DO NOT TIGHTEN**). USE A JACKSTAND TO SUPPORT MUFFLER. INSERT WELDED HANGER INTO RUBBER GROMMET.



INSTALL YOUR STAINLESS STEEL TIP. NOW TIGHTEN ALL CLAMPS AND RE-INSTALL THE O2 SENSOR INTO THE PASSENGER SIDE HEADPIPE. WE RECOMMEND USING ANTI-SEIZE ON ALL THREADS. USE ANY ALUMINUM OR STAINLESS STEEL CLEANER TO POLISH YOUR TIP.

MAKE SURE YOU HAVE AT LEAST A 1" CLEARANCE AROUND SPARE TIRE, SHOCKS, BRAKE & FUEL LINES, ETC.