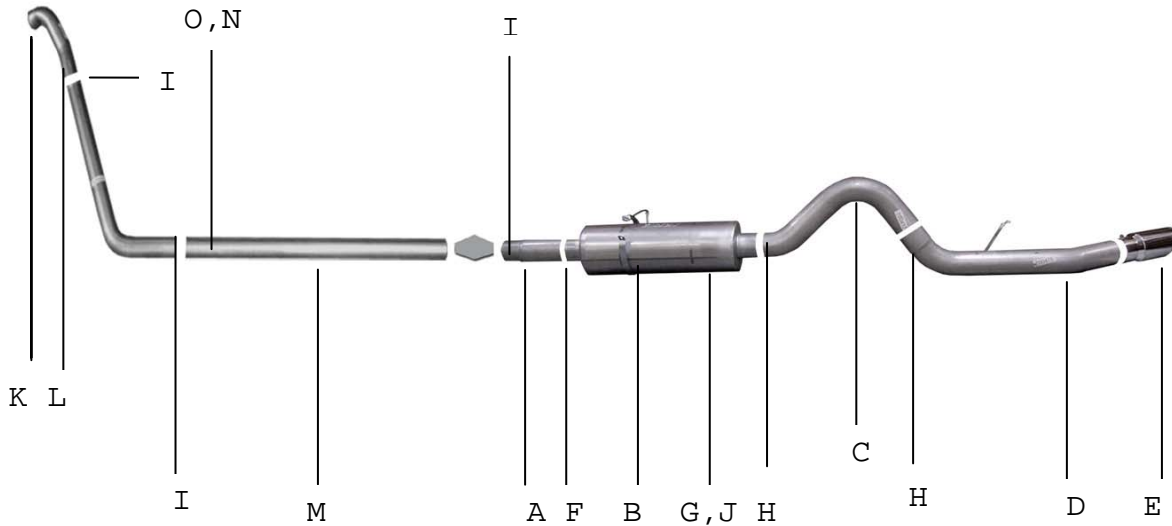


INSTRUCTION MANUAL

DOWN PIPE BACK EXHAUST

99-03 FORD POWER STROKE TRUCK 7.3L DIESEL 2/4WD
EXTENDED CAB, CREW CAB, SHORT&LONG BED

PART # 319505



ITEM	PART #	QUANTITY	DESCRIPTION
A	700355	1	4" HEADPIPE
B	788040	1	SUPERFLOW MUFFLER
C	700417	1	4" OVERAXLE TAILPIPE
D	700476	1	4" EXIT PIPE
E	500401	1	5" STAINLESS TIP
F	4169	1	FRONT MUFFLER HANGER
G	4168	1	BAND CLAMP
H	4171	2	4" CLAMP
I	4170	3	3 ½ CLAMP
J	BO-1015	1	BOLT KIT FOR BAND CLAMP
K	700477	1	3.5" DOWN PIPE W/FLANGE
L	700478	1	3.5" DOWN PIPE
M	700479	1	3.5" STRAIGHT DOWN PIPE
N	4211	1	3.5" HANGER
O	4212	1	3.5" HANGER

DOWNPIPE INSTALLATION

When installing this exhaust system make sure to use proper safety precautions. Use jack stands when under the truck, set parking brake, block tires and use safety glasses and gloves.

SUGGESTED TOOLS

12MM, 15MM SOCKET AND WRENCH, HACKSAW OR SAWZALL, 9/16" SOCKET AND WRENCH, WD-40, JACK STAND



LAY OUT THE EXHAUST ON THE FLOOR SO IT LOOKS LIKE THE DRAWING AND COMPARE PARTS WITH MANUAL. TO REMOVE THE STOCK EXHAUST REMOVE IT FROM THE CLAMP LOCATED JUST IN FRONT OF THE MUFFLER. YOU MAY NEED TO HEAT IT UP FOR EASIER REMOVAL. LEAVE ALL RUBBER GROMMETS IN PLACE. USE WD-40 TO AID IN THE REMOVAL OF EXHAUST AND HANGERS.



INSTALL DOWN PIPE #L ONTO PIPE #K. USE CLAMP #I TO SECURE PIPES TOGETHER. DO NOT TIGHTEN.

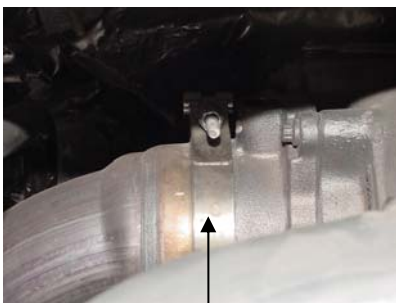


CROSS MEMBER

CUT YOUR STOCK DOWN PIPE OFF JUST IN FRONT OF YOUR CROSS MEMBER.



INSTALL THE STRAIGHT PIPE #M ONTO PIPE #L. USE CLAMP #I TO SECURE. DO NOT TIGHTEN.



STOCK CLAMP

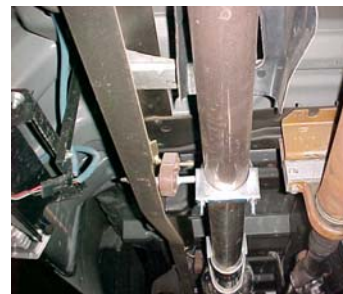
NEXT, REMOVE STOCK DOWN PIPE PIECE FROM THE TURBO USING A 12MM SOCKET OR WRENCH. DO NOT DISGAURD FACTORY CLAMP YOU WILL RE-USE IT.



NEXT INSTALL DOWN PIPE HANGERS #N AND #O. INSERT HANGERS INTO RUBBER GROMMETS. DO NOT TIGHTEN.



INSTALL DOWN PIPE #K ONTO TURBO USING YOUR FACORY CLAMP. LEAVE LOOSE. DO NOT TIGHTEN .



AFTER THIS STEP IS DONE, INSTALL YOUR CAT-BACK SYSTEM THEN YOU WILL ADJUST AND TIGHTEN ALL CLAMPS.

INSTALLATION OF EXHAUST



Install head pipe # A on to your new front pipe and secure with clamp # I Do not tighten.



Install the over axle tailpipe # C into the muffler 1-1/2" to 2". Secure to the muffler using clamp # H Do not tighten.



Install band clamp # G into rubber grommets located just above the axle. Do not tighten.



Next Install turnout pipe #D onto tailpipe. Insert welded hanger into rubber grommet. Use clamp #H to secure pipes together. Do not tighten.



Install muffler onto head pipe # A 1-1/2" to 2" with the louvers facing towards the converter. Use a jack stand to support the muffler. Use clamp# F to secure the muffler to the head pipe. Do not tighten. Insert hanger into rubber grommet. Muffler inlet is looking into the louvers.



Install stainless steel tip. Clamp down. When you have everything in place, firmly tighten all bolts and clamp down securely. To clean stainless steel tip use any stainless steel cleaner and Scotch Brite pad.

MAKE SURE YOU HAVE A 1" CLEARANCE ON ALL RUBBER BRAKE LINES, SHOCK BOOTS, TIRES, FUEL LINES, ETC..

THANK YOU FOR PURCHASING OUR GIBOSN EXHAUST SYSTEM FOR YOUR VEHICLE. IF YOU NEED ANY FURTHER ASSISTANCE, PLEASE DO NOT HESITATE TO CALL OUR TECHNICAL DEPARTMENT AT 1-800-528-3044 MONDAY THROUGH FRIDAY, 8:00 TO 5:00PM P.S.T. 1004

