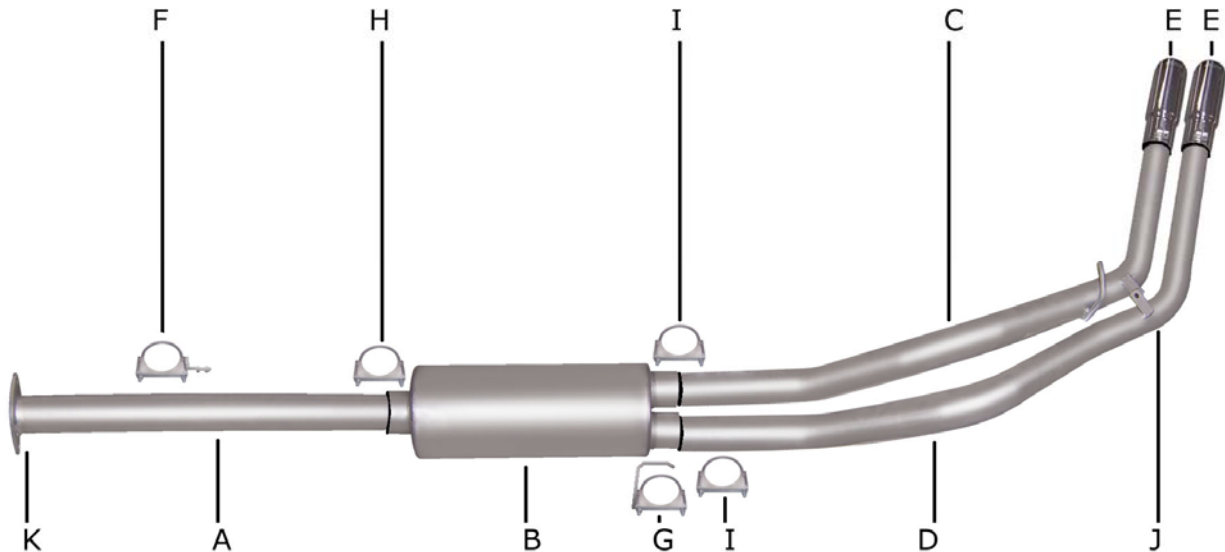




**INSTRUCTION MANUAL**  
**CAT-BACK STAINLESS DUAL SPORT EXHAUST**  
**96-99 CHEVY/GMC 1500 TRUCK 4.3L, 5.0L 2/4WD**  
**EXTENDED CAB, SHORT BED**  
**PART #65521**



ITEM	PART #	QUANTITY	DESCRIPTION
A	567-700332S	1	3" X 42" STAINLESS HEADPIPE W/FLANGE #GP-305
B	789800S	1	S/S SUPERFLOW MUFFLER
C	372-700238S	1	2-1/2" S/S PASS. OVERAXLE TAILPIPE
D	373-700239S	1	2-1/2" S/S DRIVER OVERAXLE TAILPIPE
E	500361	2	3-1/2" STAINLESS STEEL TIP
F	4160	1	3" S/S HANGER
G	4158	1	2-1/2" HANGER
H	OHD300	1	3" CLAMP
I	5757	2	2-1/2" CLAMP
J	BO-906	1	BOLT KIT FOR TAILPIPE
K	9688	1	GASKET FOR FLANGE

Thank you for purchasing our GIBSON PERFORMANCE EXHAUST SYSTEM for your vehicle. If you need further assistance please do not hesitate to call our Technical Department at (800) 528-3044, Monday through Friday, 8:00 am to 5:00pm. 0806

# EXHAUST INSTALLATION #65521

## SLIP FIT CONVERTER

WHEN INSTALLING THIS EXHAUST SYSTEM, MAKE SURE TO USE PROPER SAFETY PRECAUTIONS. USE JACK STAND WHEN UNDER TRUCK, SET PARKING BRAKE, BLOCK TIRES, AND USE SAFETY GLASSES AND GLOVES. **DO NOT WORK WITH HOT PIPES!**

### SUGGESTED TOOLS:

15mm SOCKET & WRENCH, 9/16" SOCKET & WRENCH, 1/2" SOCKET WRENCH, JACK STAND, WD-40, HACKSAW

LAY OUT THE EXHAUST ON THE FLOOR AND COMPARE PART NUMBERS WITH THE MANUAL.

#### 1.) TO REMOVE EXHAUST

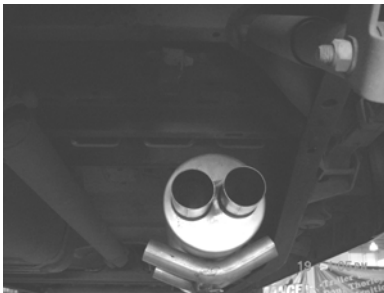
UNBOLT IT FROM THE 2-BOLT FLANGE LOCATED BEHIND THE CATALYTIC CONVERTER. **SAVE STOCK NUTS & BOLTS YOU WILL RE-USE THEM.** NOW CUT OFF YOUR STOCK TAILPIPE JUST BEHIND THE MUFFLER AND REMOVE. LEAVE ALL RUBBER GROMMETS ON THE HANGERS. USE WD-40 ON ALL RUBBER GROMMETS.



2.) BOLT HEADPIPE #A ONTO THE FACTORY FLANGE USING THE GASKET #K, NUTS & BOLTS. INSERT WELDED HANGER INTO RUBBER GROMMET. DO NOT TIGHTEN.



3.) SLIP MUFFLER #B ONTO THE HEADPIPE 1-1/2" TO 2" WITH INLET TOWARDS THE CONVERTER. USE A JACK STAND TO SUPPORT THE MUFFLER. USE CLAMP #H TO SECURE MUFFLER TO HEADPIPE. DO NOT TIGHTEN. ATTACH HANGER #F TO HEADPIPE.



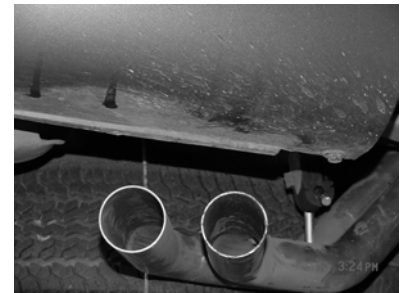
5.) INSTALL PASSENGER SIDE OVERAXLE TAILPIPE #C INTO MUFFLER 1-1/2" TO 2-1/2". SLIDE WELDED HANGER INTO RUBBER GROMMET. USE CLAMP #I TO SECURE PIPE TO MUFFLER. DO NOT TIGHTEN.



6.) INSTALL DRIVERSIDE OVERAXLE TAILPIPE #D INTO MUFFLER 1-1/2" TO 2-1/2" AND SECURE PIPE TO MUFFLER USING CLAMP #I. NOW, BOLT BOTH PIPES TO THE TOGETHER USING BOLT KIT #J. DRIVERSIDE TAB MOUNT GOES ON THE BOTTOM. SPARE TIRE MAY NEED TO BE LOOSENED UP AND PUSHED OVER TO THE DRIVERSIDE.



7.) INSTALL YOUR STAINLESS TIPS. TO CLEAN THE TIP USE A SCOTT BRITE OR ALUMINUM AND STAINLESS STEEL CLEANER. NOW TIGHTEN ALL BOLTS, CLAMPS, HANGERS, AND FLANGE.



**MAKE SURE YOU HAVE A 1" CLEARANCE ON ALL PIPES FROM ALL FUEL, BRAKE LINES, SHOCK BOOTS, TIRES, ETC.**