

INSTALLATION INSTRUCTIONS

DOMINATOR III SERIES SIDE STEPS PART NUMBER D361481 (B)
10 - 13 DODGE RAM 2500HD, 3500HD CREW CAB P/U 4DR 2/4WD SHORT BED
Do not attempt to install this product on any vehicle other than the one it is designed for and listed above!

PARTS LIST

<u>QTY</u>	<u>PART DESCRIPTION</u>	<u>QTY</u>	<u>PART DESCRIPTION</u>
26	3/8" X 1 1/4" HEX BOLT	1	DRIVER SIDE STEP
48	3/8" FLAT WASHER	3	DRIVER BRACKET
34	3/8" LOCK WASHER	1	DRIVER REAR AUXILIARY BRACKET
22	3/8" HEX NUT	1	PASSENGER SIDE STEP
8	VINYL GASKET	3	PASSENGER BRACKET
2	3/8" T-BOLT	1	PASSENGER REAR AUXILIARY BRACKET
6	3/8" T-PLATE		

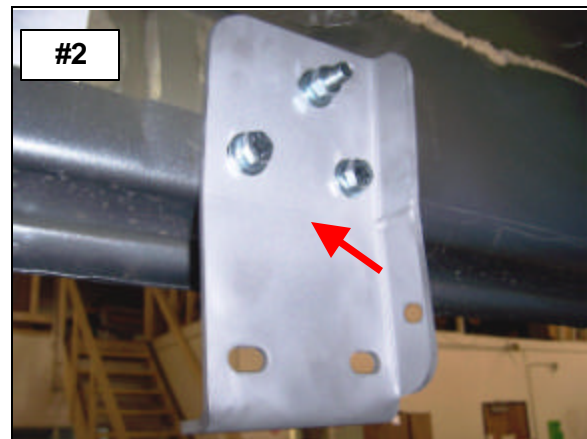
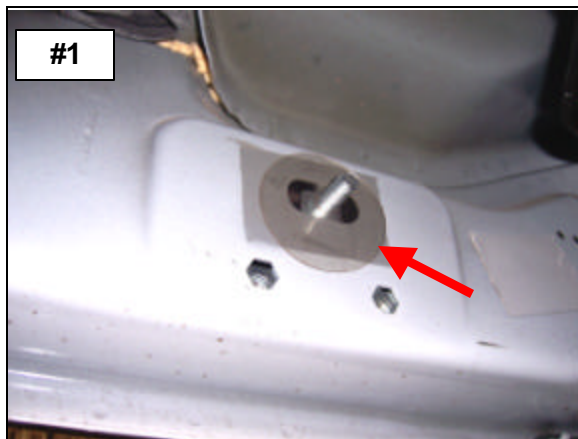
INSTALLATION INSTRUCTIONS

READ THE INSTRUCTIONS COMPLETELY BEFORE YOU BEGIN THE INSTALLATION

STEP-1 BEGIN THE INSTALLATION BY INSTALLING THE DRIVER SIDE BRACKETS.

LOCATE THE (2) HEXAGON SHAPED HOLES IN THE BODY PANEL AT THE FRONT OF THE CAB AND REMOVE THE TAPE COVERING THE OBLONG HOLE. INSTALL (1) 3/8" T-PLATE IN THE OBLONG HOLE AND INSTALL A VINYL GASKET OVER THE THREADS TO PREVENT THE T-PLATE FROM FALLING INTO THE BODY. **PHOTO #1**

STEP-2 ATTACH ONE OF THE D07D BRACKETS TO THE BODY PANEL USING THE T-PLATE (2) 3/8" X 1 1/4" HEX BOLTS, (3) 3/8" FLAT WASHERS, (3) 3/8" LOCK WASHERS AND (1) 3/8" HEX NUT. HAND TIGHTEN. **PHOTO #2**



STEP-3 LOCATE THE HEXAGON SHAPED HOLES IN THE BODY PANEL AT THE CENTER OF THE CAB AND REPEAT THE ABOVE STEPS TO INSTALL ONE OF THE D07D BRACKETS.

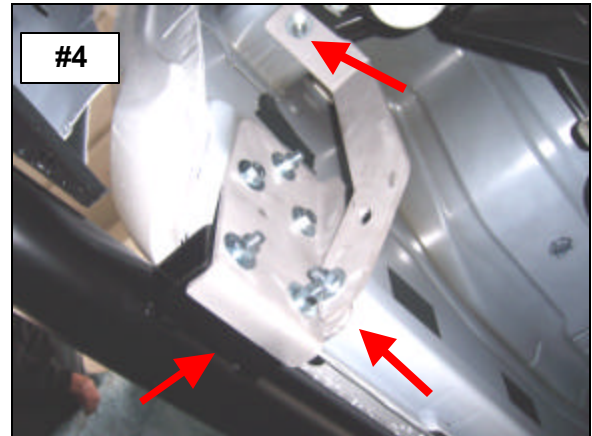
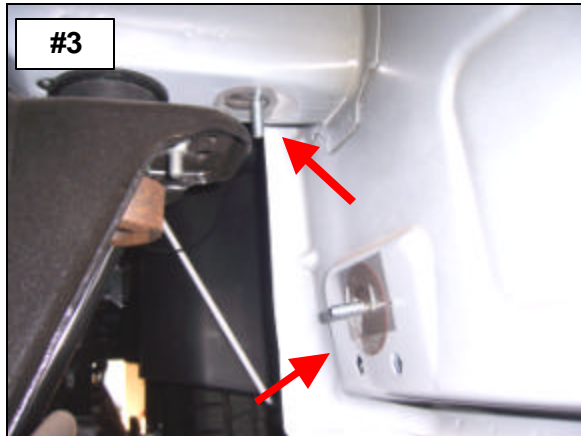
STEP-4 LOCATE THE SQUARE HOLE IN THE UNDERSIDE OF THE BODY AND (2) HEXAGON SHAPED HOLES IN THE BODY PANEL AT THE REAR OF THE CAB.

REMOVE THE TAPE COVERING THE OBLONG HOLE AND INSTALL (1) 3/8" T-PLATE IN THE OBLONG HOLE AND (1) 3/8" T-BOLT IN THE SQUARE HOLE. INSTALL VINYL GASKETS OVER THE THREADS. **PHOTO #3**

STEP-5 ATTACH THE REMAINING D07D BRACKET TO THE BODY PANEL USING THE T-PLATE (2) 3/8" X 1 1/4" HEX BOLTS, (3) 3/8" FLAT WASHERS, (3) 3/8" LOCK WASHERS AND (1) 3/8" HEX NUT. HAND TIGHTEN.

ATTACH THE REAR AUXILIARY BRACKET TO THE UNDERSIDE OF THE BODY USING THE T-BOLT, (1) 3/8" FLAT WASHER, (1) 3/8" LOCK WASHER, (1) 3/8" HEX NUT AND TO THE BRACKET USING (1) 3/8" X 1 1/4" HEX BOLTS, (2) 3/8" FLAT WASHERS, (1) 3/8" LOCK WASHER AND (1) 3/8" HEX NUTS. HAND TIGHTEN.

ATTACH THE DRIVER SIDE STEP TO EACH BRACKET USING (2) 3/8" X 1 1/4" HEX BOLTS, (4) 3/8" FLAT WASHER, (2) 3/8" LOCK WASHERS AND (2) 3/8" HEX NUTS. **PHOTO #4**



STEP-6 ALIGN THE SIDE STEP WITH THE VEHICLE AND TIGHTEN ALL BRACKETS AND SIDE STEP NUTS AND BOLTS.

REPEAT THE ABOVE STEPS TO INSTALL THE PASSENGER SIDE BRACKETS AND SIDE STEP.



**FOR TECHNICAL OR WARRANTY INFORMATION CALL:
TOLL FREE (888) 427-4466 FAX (714) 672-0278
GO RHINO! Products® 591 W. Apollo St. Brea, CA 92821**