

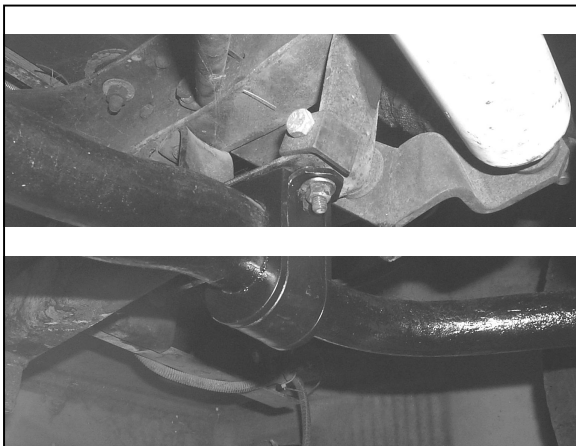
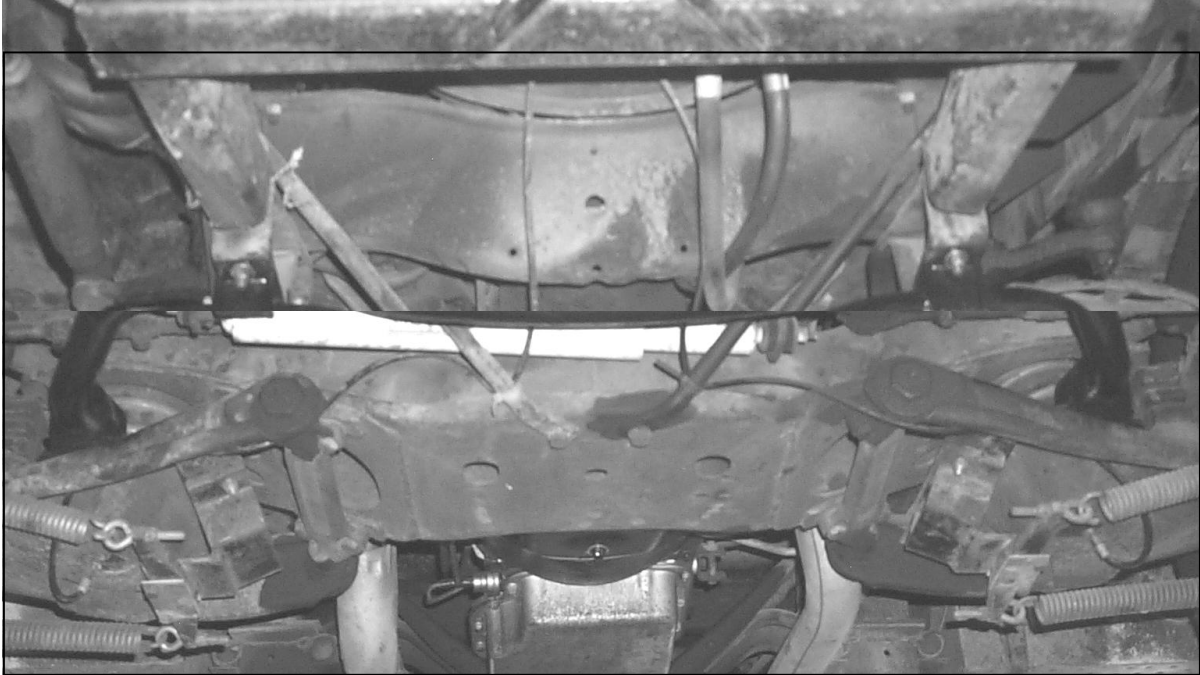
# Hellwig PRODUCTS.com

559-734-7451 800-367-5480 FAX 559-734-7460

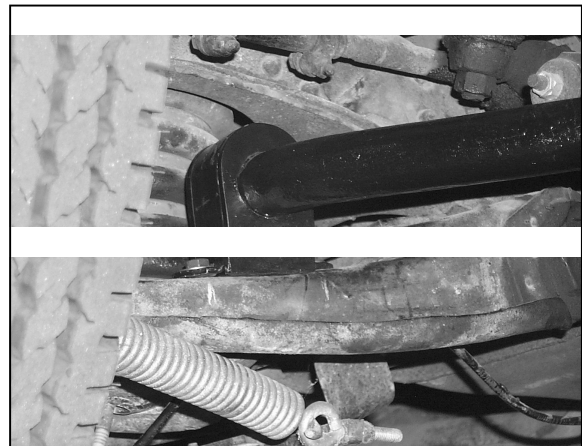
## INSTALLATION INSTRUCTIONS FRONT SWAY BAR P30 COMMERCIAL & MOTORHOME CHASSIS

Thank you for purchasing a quality Hellwig Product.

PLEASE READ THIS INSTRUCTION SHEET COMPLETELY BEFORE STARTING YOUR INSTALLATION.



FRAME MOUNTING  
FOR BOTH DRIVER &  
PASSENGER SIDE



LOWER CONTROL ARM  
MOUNTING BOTH DRIVER  
& PASSENGER SIDE

# Hellwig PRODUCTS.com

559-734-7451 800-367-5480 FAX 559-734-7460

## TORQUE TABLE

**BOLT SIZE:** 3/8" = 20-30 ft. lbs. – 7/16" = 35-45 ft. lbs. – 1/2" = 50-70 ft. lbs. – 9/16" = 70-90 ft. lbs.

**SAFETY: PARK YOUR VEHICLE ON A FLAT LEVEL SURFACE, SET THE PARKING AND CHOCK THE FRONT TIRES.**

**NOTE: THIS KIT CONTAINS THE REPLACEMENT FRONT SWAY BAR AS WELL AS REPLACEMENT POLY BUSHINGS FOR THE REAR SWAY BAR.**

1. Locate and remove the factory mounted front sway bar. Take note of the mounting positions of the D-shaped poly bushings.
2. Assemble the new front sway bar with the new (1-5/8") D-bushings in as close as possible position as on the old sway bar.
3. You may need an extra pair of hands to complete the next task. Raise the sway bar with the D-bushings to the frame. Install the U-plates, nuts and bolts that are provided to the frame brackets. **Leave loose at this time to allow for adjustment later.**
4. Replace the U-plates, nuts and bolts on the lower control arms. **Leave loose at this time to allow for adjustment later.**
5. First tighten the frame bracket bolts to 20-30 ft. lbs torque. Then torque the lower control arm bolts.
6. **(REAR SWAY BAR BUSHING REPLACEMENT).** Locate the rear sway bar mounted on the chassis under carriage. Locate and loosen all the mounting bolts which support the U-plates and bushings on the sway bar to the frame and the axle.
7. Loosen all the mounting bolts an all the U-plates (**but do not remove**).
8. Install one D-shaped bushing and U-plate at a time until all four (4) have been changed. (1-3/4" D-shaped poly bushings).
9. Tighten the axle U-plates first then the frames U-plates.
10. Recheck your installation be sure that all mounting hardware is tightened to 20-30 ft. lbs. after one week of driving recheck your installation and on a regular monthly basis thereafter.

**ATTENTION INSTALLER : BE SURE CUSTOMER RECIEVES THIS INSTUCTION SHEET, ALL IMPORTANT NOTE CARDS AND THE WARRANTY FORM.**

# Hellwig PRODUCTS.com

559-734-7451 800-367-5480 FAX 559-734-7460

## PARTS LIST

**KIT # 7162**

### **P30 COMMERCIAL & MH CHASIS**

<b>PART #</b>	<b>QTY</b>	<b>DESCRIPTION</b>
20217162	1	1-5/8" SWAY BAR
<b>20907162</b>	<b>1</b>	<b>COMPETION KIT # 7162</b>

### **FRONT SWAY BAR**

20800158	4	U-PLATE
111000868	4	1-5/8" POLY BUSHING

### **REAR SWAY BAR**

20800003	4	U-PLATE
111000889	4	1-3/4" POLY BUSHING
<b>125020162</b>	<b>1</b>	<b>SMALL PARTS BAG # BG-162</b>
101500244	8	3/8" X 1-1/2" CAP SCREW
107302003	16	3/8" LOCK NUT
102306001	32	3/8" FLAT WASHER
101500071	8	3/8" X 1-3/4" CAP SCREW
135007162	1	INSTRUCTION SHEET R-7162

**7162 ( R 7162)**

**06/02/04**