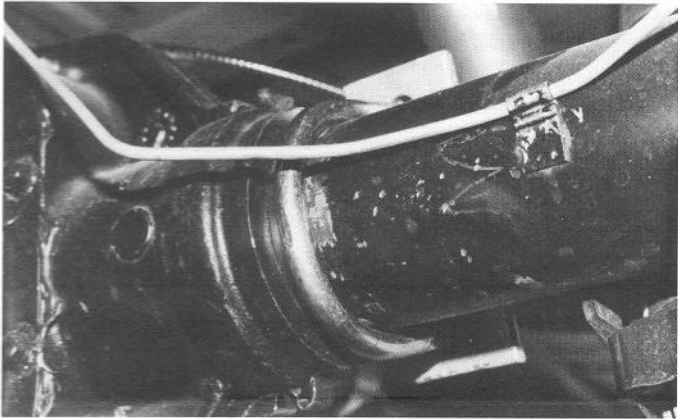




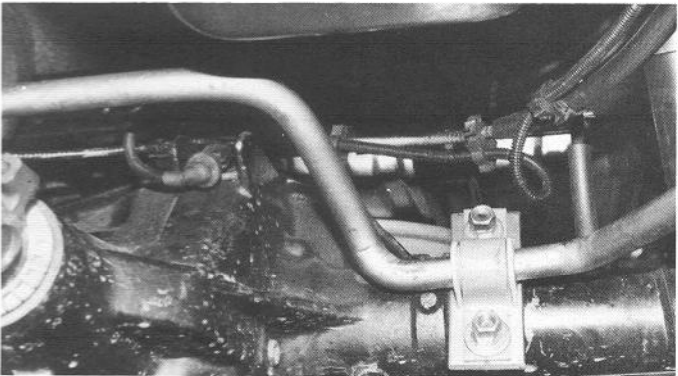
# HELLWIG INSTALLATION INSTRUCTIONS

FACTORY AND GENERAL OFFICES • 16237 AVENUE 296, VISALIA, CA 93291 • (209) 734-7451

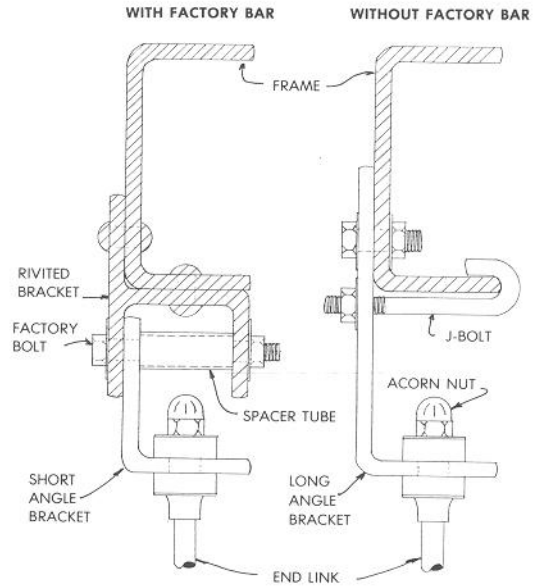
READ THIS INSTRUCTION SHEET COMPLETELY BEFORE STARTING YOUR INSTALLATION



1



2



### TORQUE RATINGS

3/8 Inch	...	35 ft. lbs.
7/16 Inch	...	45 ft. lbs.
1/2 Inch	...	75 ft. lbs.
9/16 Inch	...	90 ft. lbs.
5/8 Inch	...	120 ft. lbs.

**CAUTION**  
Stay Clear of Brake Lines

**NOTE: THIS UNIT IS DESIGNED TO REPLACE THE FACTORY INSTALLED REAR ANTI-SWAY BAR OR AS AN ADDITION IF ONE IS NOT FACTORY INSTALLED.**

1. Remove the factory installed rear anti-sway bar and all the mounting hardware.
2. As per Photo #1, place the U-bolts provided over the axle tubes just next to the differential housing. Be careful to put the U-bolts under any brake lines, wiring or hoses on the axles to avoid damage when tightened.
3. Place the flat plates with the welded tabs on the U-bolts so the welded tabs are on the axle tubes and the flat plate is on the differential housing.
4. Place the D-shaped bushings on the back of the bar to line up with the flat plates.
5. Place the U-plates over the D-shaped bushings and mount the bar to the axle U-bolts with the large flat washers and nuts. See Photo #2. LEAVE LOOSE AT THIS TIME.
6. As per the line drawings, attach the short angle brackets and spacer tubes to the riveted frame brackets on vehicles with a factory bar, use the nuts, washers and bolts removed in Step #1. Attach the long angle brackets with the lock nuts, washers and bolts provided. Use the J-bolts to secure the bracket to the frame on vehicles without a factory bar.
7. Mount the end links between the frame angle brackets and the ends of the bar as shown in the diagrams.
8. With the axle U-bolts still loose, adjust the bar on the axle to be as centered as possible and so the end links are as straight up and down as possible.
9. Torque all mounting hardware to the specified rate.
10. Bounce the vehicle checking for clearance on all undercarriage components, brake lines, fuel hoses, springs, etc.
11. Recheck your installation after one week of driving and every thirty (30) days thereafter.

**ATTENTION INSTALLER:** BE SURE THE CUSTOMER RECEIVES THIS INSTRUCTION SHEET, ALL IMPORTANT NOTE CARDS, WARNING CARDS, AND THE WARRANTY FORM.