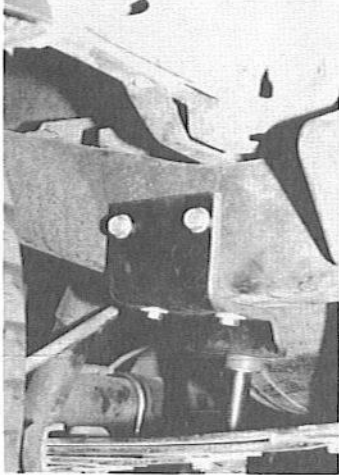




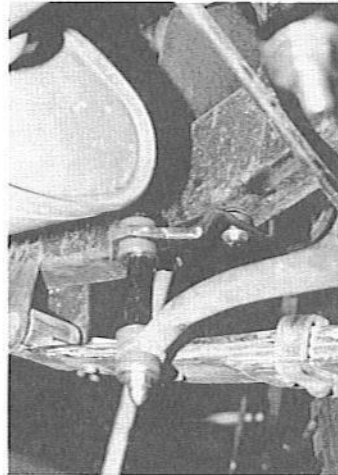
HELLWIG INSTALLATION INSTRUCTIONS

FACTORY AND GENERAL OFFICES • 16237 AVENUE 296, VISALIA, CA 93292 • (209) 734-7451

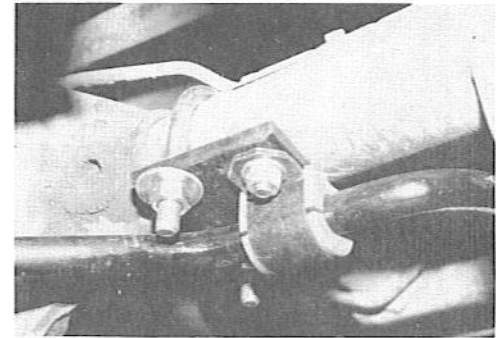
READ THIS INSTRUCTION SHEET COMPLETELY BEFORE STARTING YOUR INSTALLATION



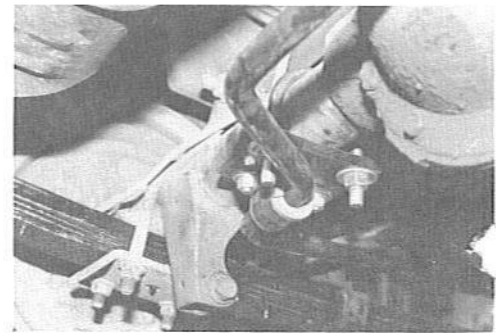
1. (Passenger Side From Front At Tire)



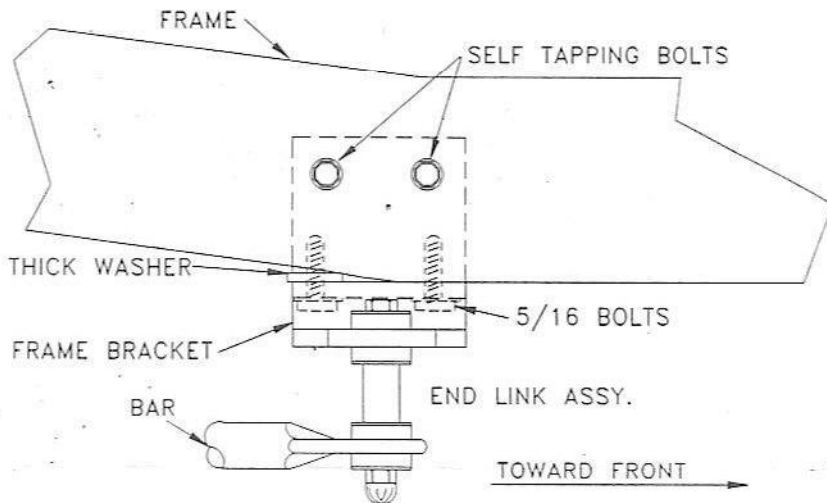
1A. (Passenger Side From Under Vehicle)



2. (Passenger Side From Rear)

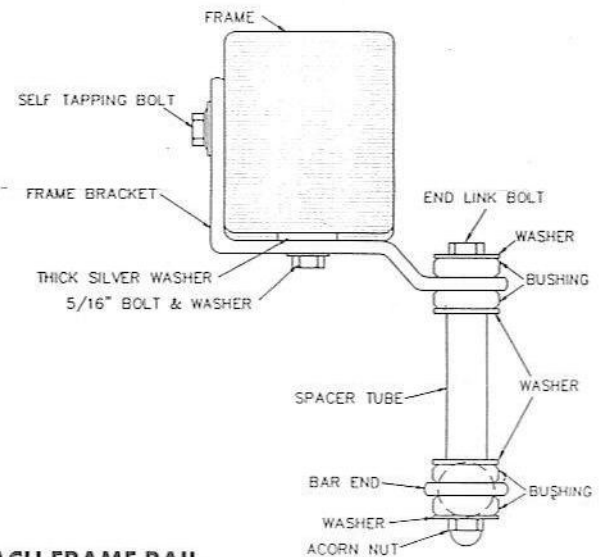


3. (Driver's Side From Rear)



TORQUE RATINGS

5/16 Inch	20 ft. lbs.
3/8 Inch	35 ft. lbs.
7/16 Inch	45 ft. lbs.
1/2 Inch	75 ft. lbs.
9/16 Inch	90 ft. lbs.
5/8 Inch	120 ft. lbs.



NOTE: THIS UNIT WILL REQUIRE DRILLING 2 HOLES IN THE SIDE OF EACH FRAME RAIL.

- As per Photo #1, remove the rubber travel stop pad from the frame located in the front half of the leaf spring.
- Use the 5/16" x 1 1/2" bolts, and washers provided, mount the frame bracket to the frame at the forward holes, place the thick silver washer above the rear hole between the frame bracket and the frame to compensate for the curve in the frame. LEAVE LOOSE to allow the end link room to be installed in the bracket.



HELLWIG INSTALLATION INSTRUCTIONS

FACTORY AND GENERAL OFFICES • 16237 AVENUE 296, VISALIA, CA 93292 • (209) 734-7451

READ THIS INSTRUCTION SHEET COMPLETELY BEFORE STARTING YOUR INSTALLATION

3. Place a flat washer and round end link bushing onto the 7/16" bolts and feed through the hole in the frame bracket so the threads are hanging downward. See Photo and Diagram.
4. As per Photos #2 and 3, place the U-bolts over the axle tubes near the differential. Be sure to put the U-bolts under the brake lines to avoid pinching the brake lines when the U-bolts are tightened later.
5. Place the D-shaped bushings on the bar on each side of the center hump area, place the U-plates over the D-bushing. See Photos #2 and 3.
6. Put the flat 4 hole plates onto the U-bolts so the narrow U-plate slots are outboard of the U-bolts. Attach the flat plates to the U-bolts with the flat washer and locknuts provided. LEAVE LOOSE to allow for adjustment later.
7. Using the 3/8" bolts, washers, and locknuts provided, mount the bar to the flat plates as shown in Photos #2 and 3. LEAVE LOOSE to allow for adjustment.
8. As per Photo #1 and the Diagram, Attach the ends of the bar to the end links hanging from the frame brackets, tighten only until the acorn nut bottoms, DO NOT OVERTIGHTEN or damage to the acorn nut and the bushings will result.
9. Tighten the 5/16" bolts on the bottom of the frame brackets to the specified rate. Be sure the bracket is up against the outside of the frame. Adjust as needed.
10. Rotate the U-bolts on the axle and move the bar side to side to center the bar between the shocks and so the end links are as straight between the frame brackets and the bar ends as possible. Torque the axle U-bolts and U-plate mount bolts to the specified rate. Be sure the U-bolts are under the brake lines to avoid damage.
11. With all adjustments made and the bar mounted properly, use the holes in the outside of the frame bracket as a guide and drill 5/16" holes in the frame rails. Screw the self tapping screws into the holes and tighten to the specified rate.
12. Bounce the vehicle checking for clearance on all under carriage components. Recheck your installation after one week of driving and every thirty (30) days thereafter

ATTENTION INSTALLER: BE SURE THE CUSTOMER RECEIVES THIS INSTRUCTION SHEET, ALL IMPORTANT NOTE CARDS, WARNING CARDS, AND THE WARRANTY FORM.