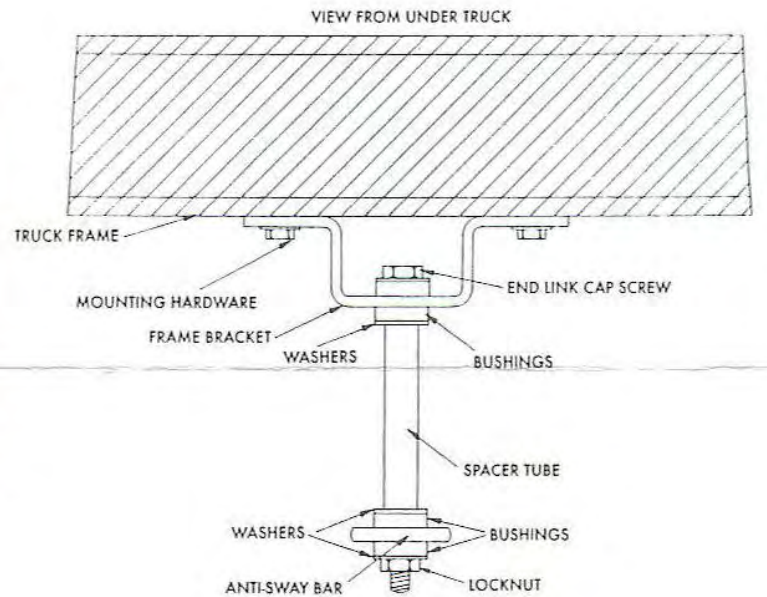
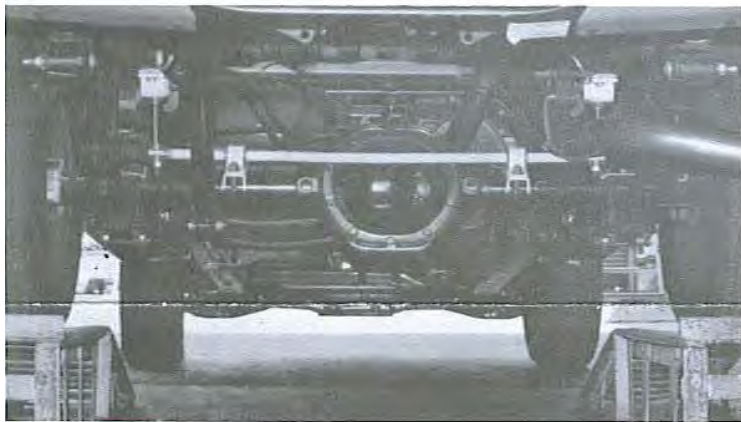
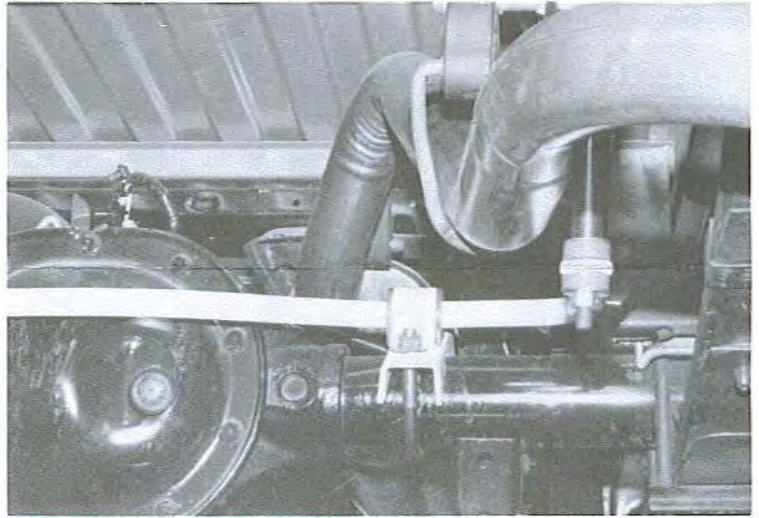
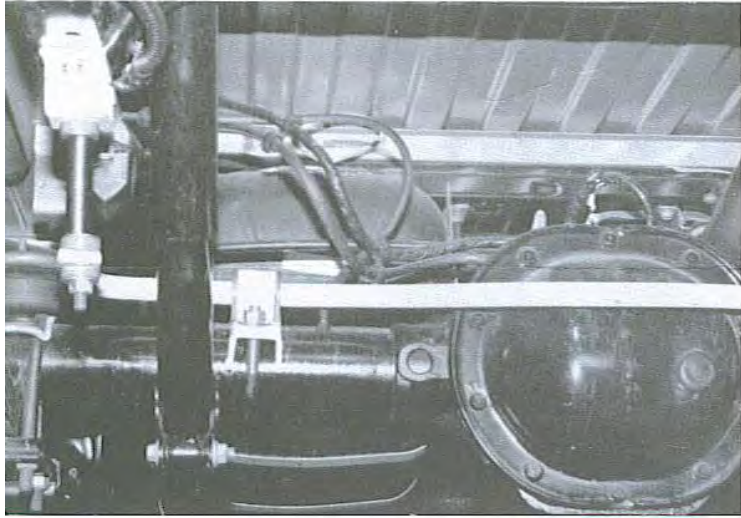




HELLWIG INSTALLATION INSTRUCTIONS

FACTORY AND GENERAL OFFICES • 16237 AVENUE 296, VISALIA, CA 93292 • (209) 734-7451

READ THIS INSTRUCTION SHEET COMPLETELY BEFORE STARTING YOUR INSTALLATION



TORQUE RATES

$\frac{3}{8}$ inch = 20-30 ft. lbs. $\frac{7}{16}$ inch = 35-45 ft. lbs. $\frac{1}{2}$ inch = 50-70 ft. lbs. $\frac{5}{8}$ inch = 70-90 ft. lbs.

NOTE: THIS UNIT IS DESIGNED TO MOUNT TO THE UPPER REAR OF THE AXLE TUBES WITH THE ARMS OF THE BAR TOWARD THE REAR OF THE VEHICLE.

ATTENTION INSTALLER: BE SURE THE CUSTOMER RECEIVES THIS INSTRUCTION SHEET, ALL IMPORTANT NOTE CARDS, WARNING CARDS, AND THE WARRANTY FORM.



HELLWIG INSTALLATION INSTRUCTIONS

FACTORY AND GENERAL OFFICES • 16237 AVENUE 296, VISALIA, CA 93292 • (209) 734-7451

READ THIS INSTRUCTION SHEET COMPLETELY BEFORE STARTING YOUR INSTALLATION

1. As per the Diagram, place the D-shaped poly bushings onto the straight areas of the bar on each side of the center hump.
2. Install axle hardware and bushings as per Photo with the threads of the U-bolts pointing up and slightly forward.
- ~~3. Be sure brake lines are outside the U-bolts and cannot be damaged when tightening U-bolts. Complete both sides. LEAVE LOOSE at this time to allow for adjustment.~~
4. Connect the end links to the frame brackets using the cap screws provided with the bolt down through the frame bracket so the nut is down (or on the bottom as per Photo). This must be done before you mount frame bracket to frame.
5. Frame bracket will mount under the frame in existing holes on each side of the crossmember. One of the existing holes is used for an exhaust pipe bracket. Remove this bolt, then connect frame bracket and exhaust pipe bracket to the frame using the hardware provided.
6. Align the bar side to side through the bushings to be centered as near as possible. Rotate the bar front to rear by rotating the U-bolts on the axle so the end links are as straight up and down as possible. Be sure the bar or end links do not contact the differential driver's side shock or the exhaust pipe. Torque all of the mounting hardware to the specified rate. Bounce the vehicle checking for clearance on all undercarriage components, ie, exhaust shocks, etc.

ATTENTION INSTALLER: BE SURE THE CUSTOMER RECEIVES THIS INSTRUCTION SHEET, ALL IMPORTANT NOTE CARDS, WARNING CARDS, AND THE WARRANTY FORM.