



DODGE RAM – WITH FENDER FLARES FRONT MUD GUARD - INSTALLATION INSTRUCTIONS

Please read instructions thoroughly before installation.

Tools Required

- 10mm Wrench or Socket

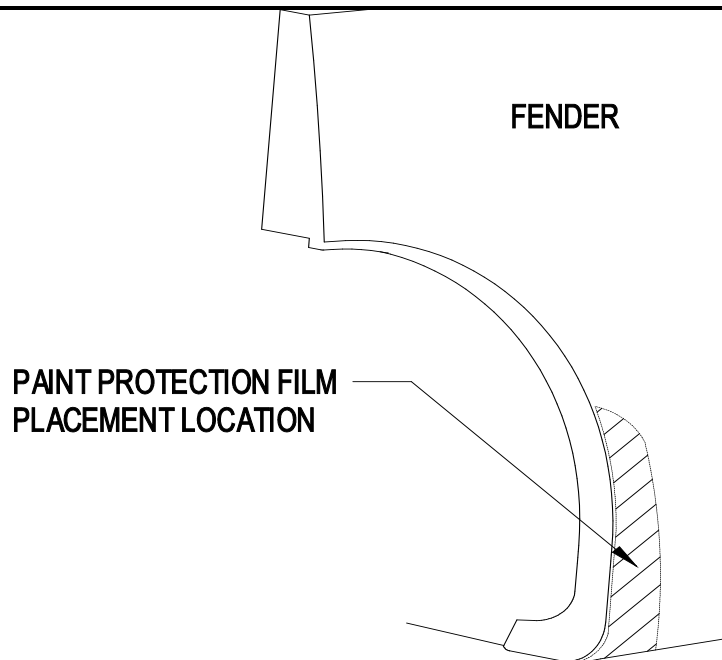
Package Contents

- Driver & passenger side front mud guards
- Paint Protection Film (1 set)
- Instruction sheet

PAINT PROTECTION FILM - INSTALLATION

NOTE: The Paint Protection Film is a precut template of film used to protect the mud guard mounting surfaces of your fenders against wear. The templates (left and right side) can be removed from the backing liner by folding the liner at the center cut of the template, separating the film sides and peeling the film templates from the backing liner.

1. Position mud guard on fender to indicate placement location of paint protection film.
2. Clean the placement area of fender with a clean cotton cloth and a petroleum distillate based cleaner such as DuPont Prep-Sol Brand Solvent Cleaner or 3M Brand Adhesive Cleaner and dry.
3. Mix a wetting solution of 1 pint of water with 4 drops of liquid dishwashing detergent.
4. Mark correct position of film by placing mud guard against fender.
5. Remove protection film from liner and flood adhesive side of film with wetting solution (use a spray bottle or sponge).
6. Thoroughly wet film placement location of fender with wetting solution.
7. Position the adhesive side of film on fender and flood with wetting solution.
8. Check location of film with mud guard and reposition as necessary.
9. Using a sponge, squeegee any air bubbles and wrinkles from film.
10. Allow film to dry before installing mud guard.



MUD GUARD INSTALLATION

NOTE: Turn wheels all the way left or right for easier installation. It may be necessary to remove the wheels before mud guard installation.

1. Remove the existing fasteners from locations A and b (Figure 1).
2. Attach the mud guard at locations A and B with the existing fasteners. Check the mud guard fit and appearance before tightening.

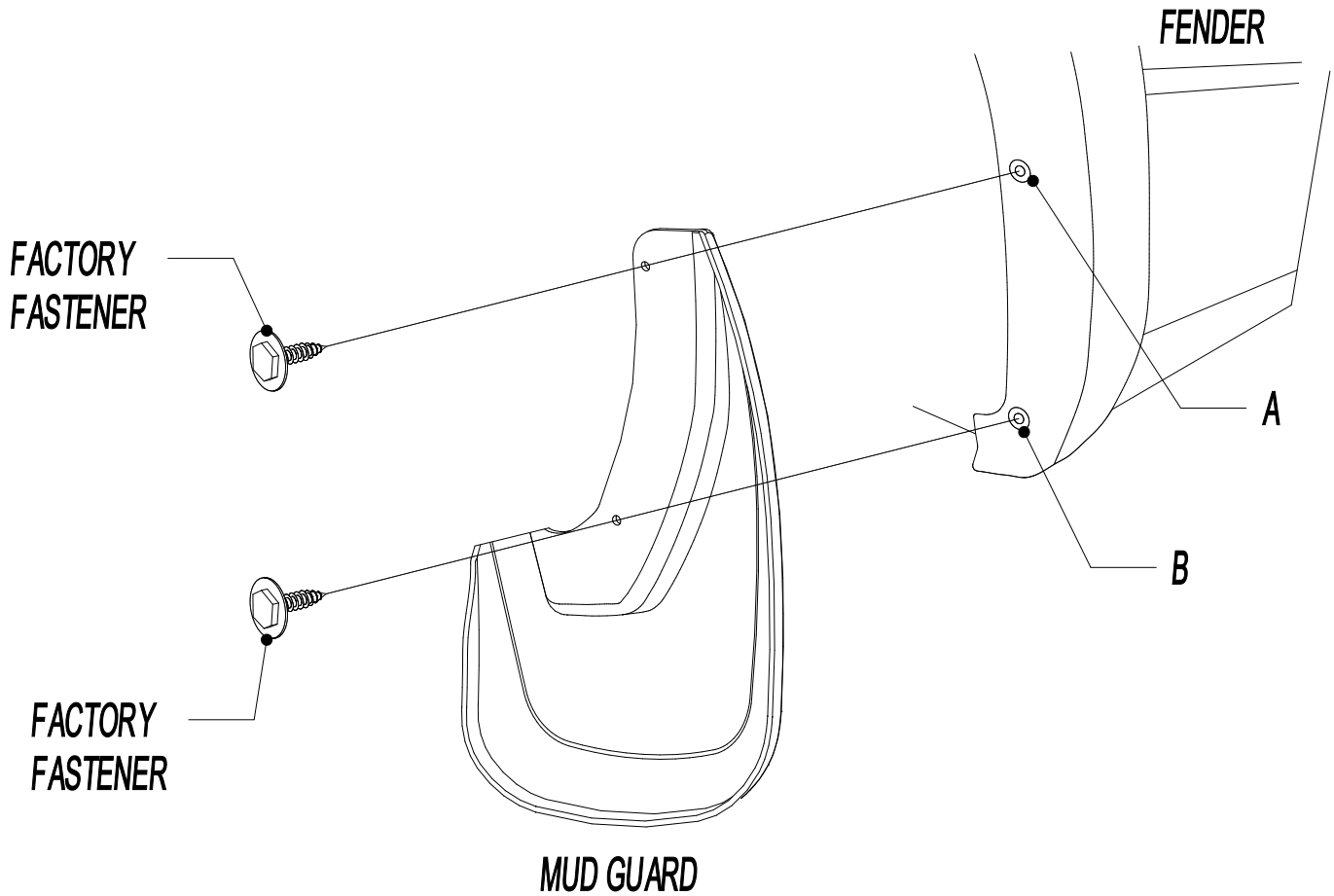


Figure 1

2013 CHROME TUBULAR STEP ADJUSTMENT

On some 2013 Ram models the optional "Chrome Tubular steps have to be adjusted to allow clearance for Husky Mudguards

NOTE: If your Chrome Tubular Step appears as in Figure 6 then proceed with Mudguard Install.



Figure 6

NOTE: If your Chrome Tubular Step appears as in Figure 7 than adjustment is needed.(See instructions below)



Figure 7

1. Remove the 4 bolts on the bottom of the tube step at each bracket (8 screws total per each side) Figure 8.



Figure 8

2. Remove the tube step from the brackets. Figure 9



Figure 9

3. Swap sides with the tube steps (Drivers side to the Passengers side, Passengers side to the Drivers side)
4. Reinstall 4 bolts on the bottom of the tube step at each bracket. (8 screws total per side) Figure 8
5. Proceed with mudguard install

PAINTING INSTRUCTIONS

1. Clean mud guard with soap and water to remove dirt and other contaminants.
2. Sand painting surface with 320 grit sand paper.
3. Apply a coating of flexible primer-adhesion promoter.
4. Apply a flexible paint as directed by the paint manufacturer.