

316.221.2268 – 800.344-8759 – (Fax) 316.221.7423 – P.O. Box 815 – Winfield, KS 67156

CONTRACTORS RACK INSTALLATION INSTRUCTIONS

Materials List: Contractors Rack (Con-Rack), (4) Nut and Bolt Sets, (2) Contractors Rack Feet,

* To install without a toolbox, you will need at least 3/8th inch nut and bolt sets.

Step #1

The Con-Rack feet may be positioned on the inside or outside of the support legs on the Con-Rack. The width of the truck bed will determine the foot position.

- Center the Con-Rack between the outside edges of the truck's cab.
- Place the Con-Rack's Feet on either side of the Con-Rack's Support Legs to determine the position, see *Contractors Rack Support Leg*.

Step #2

- After determining the position of the Con-Rack Feet, fasten each foot into position with the provided fasteners.
- Place the assembled rack on the front edge of your truck bed rail as shown in *Contractors Rack / Truck Side View*.
 - * Your J-Mac Con-Rack is designed to align with the front edge of the truck's bed rails. Note that some bed rail caps do not run all the way to the front edge of the bed rail, such as the factory bed rail caps on the 97-99 model Ford F-150. In these cases, it will be necessary to move the Con-Rack past the bed rail cap and align it with the front edge of the bed rail.

Step #3

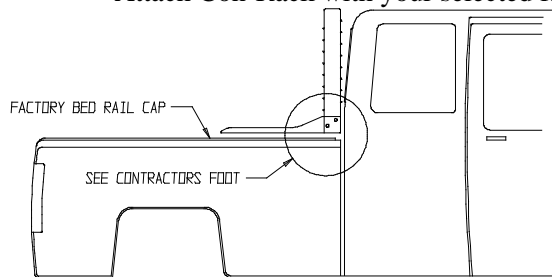
This Con-Rack is designed with 24 inch or 36 inch feet (optional). The two different lengths are provided to accommodate different widths of toolboxes. Before any holes are drilled check the clearance and accessibility of the fasteners.

Installation with toolbox:

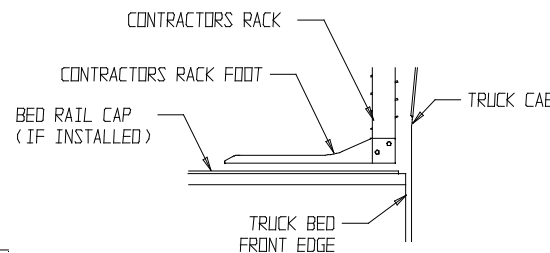
- Place toolbox directly on top of the Con-Rack's Feet and use the hole locations of the toolbox to mount the Con-Rack.
- Clamp toolbox and Contractors Rack into place on both sides of the truck bed.
- Mark all hole locations with center punch and drill holes through the toolbox, Con-Rack Feet, and bed rail.
- Attach Con-Rack and toolbox with your selected fasteners and remove clamps. J-Mac recommends 3/8th inch nuts and bolts.

Installation without toolbox:

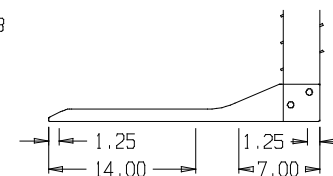
- Place the Contractors Rack into position described above and clamp into place. Select hole placement as shown in *Foot Hole Locations 24-inch / 36-inch*. Drill hole locations between the 1.25 inch - 7.00 inch marks at the front end and the 1.25 inch - 14.00 inch marks at back end of the foot. The measurements shown in will work with both 24-inch and 36-inch feet.
- Mark all hole locations with a center punch and drill holes through Con-Rack Feet and bed rail.
- Attach Con-Rack with your selected fasteners and remove clamps.



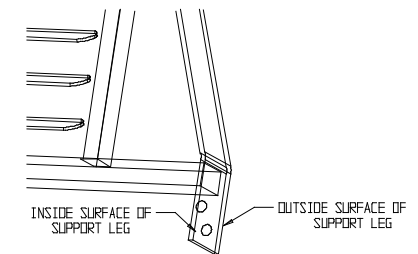
Contractors Rack / Truck Side View



Contractors Rack Foot Assembly



*Foot Hole Locations
24 Inch / 36 Inch*



*Contractors Rack Support
Leg*