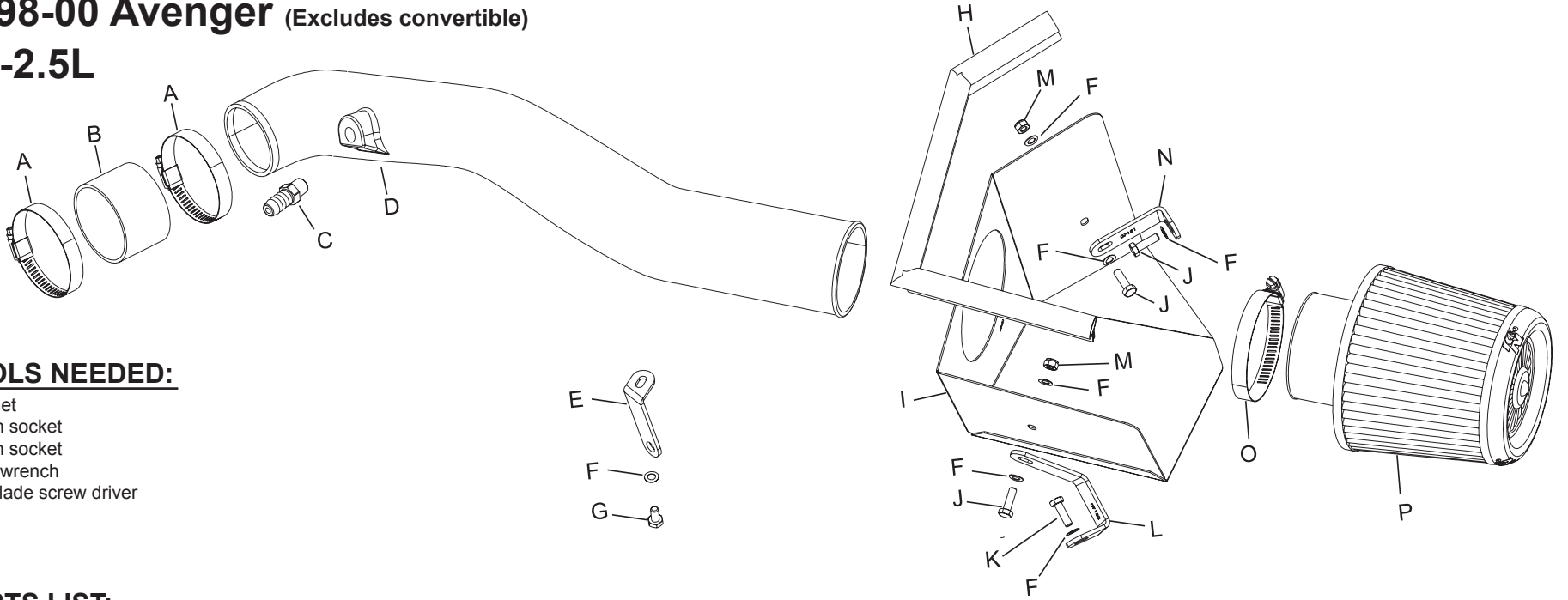




INTAKE SYSTEMS FOR VEHICLES LISTED ARE 50 STATE LEGAL. SEE KNFILTERS.COM FOR CARB STATUS ON EACH PART FOR A SPECIFIC VEHICLE.

# INSTALLATION INSTRUCTIONS

**57-1524**  
**DODGE**  
**1998-00 Avenger (Excludes convertible)**  
**V6-2.5L**



**TOOLS NEEDED:**

- Ratchet
- 10mm socket
- 12mm socket
- 9/16" wrench
- Flat blade screw driver

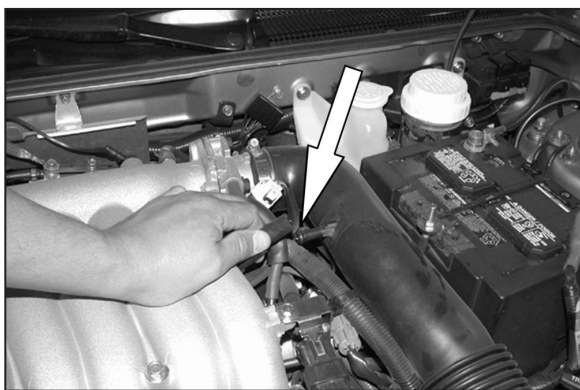
**PARTS LIST:**

Description	Qty.	Part #	Description	Qty.	Part #	Description	Qty.	Part #	Description	Qty.	Part #
A Hose Clamp, #40	2	08554	E "L" bracket	1	07130	I Heat Shield	1	07481	M 6mm Nylock Nut	2	07553
B Silicone Hose, 2-1/2" ID	1	084010	F Wave Washer	7	08174	J 6mm Hex Bolt, 20mm L.	3	07865	N "L" Bracket	1	07131
C 3/8" Vent, 1/4" NPT	1	08047	G 1/4-20 Hex Bolt	1	08317	K 6mm Hex Bolt, 25mm L.	1	07704	O Hose Clamp, #48	1	08601
D Intake tube	1	087044	H Edge Trim, 17" L.	1	102469	L "J" Bracket	1	07132	P Air Filter	1	RX-4990

**NOTE: FAILURE TO FOLLOW INSTALLATION INSTRUCTIONS AND NOT USING THE PROVIDED HARDWARE MAY DAMAGE THE INTAKE TUBE, THROTTLE BODY AND ENGINE.**

**TO START:**

1. Turn off the ignition and disconnect the negative battery cable.  
**NOTE: Disconnecting the negative battery cable erases pre-programmed electronic memories. Write down all memory settings before disconnecting the negative battery cable. Some radios will require an anti-theft code to be entered after the battery is reconnected. The anti-theft code is typically supplied with your owner's manual. In the event your vehicles' anti-theft code cannot be recovered, contact an authorized dealership to obtain your vehicles anti-theft code.**



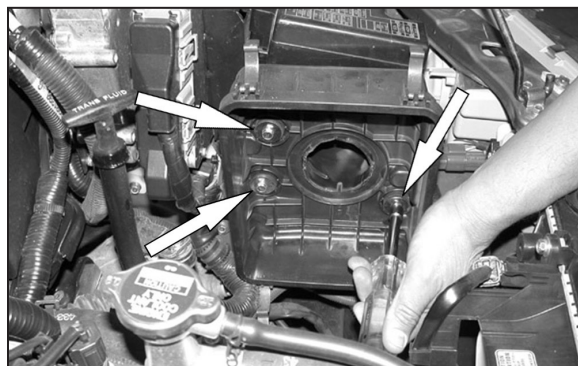
2. Disconnect the crank case vent hose from the stock intake tube as shown



3. Loosen the hose clamps at the throttle body and at the air cleaner assembly, then remove the stock intake tube as shown



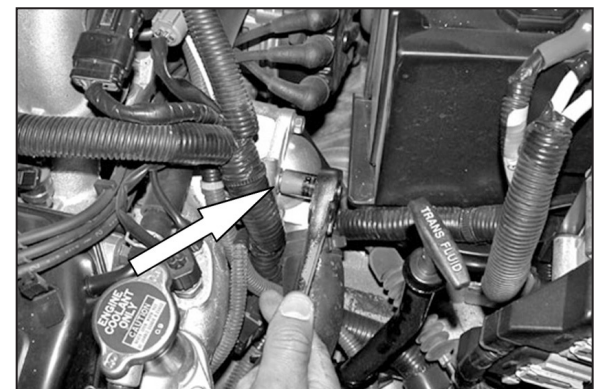
4. Unclip the four over-center clamps on the air cleaner, then remove the air cleaner lid as shown



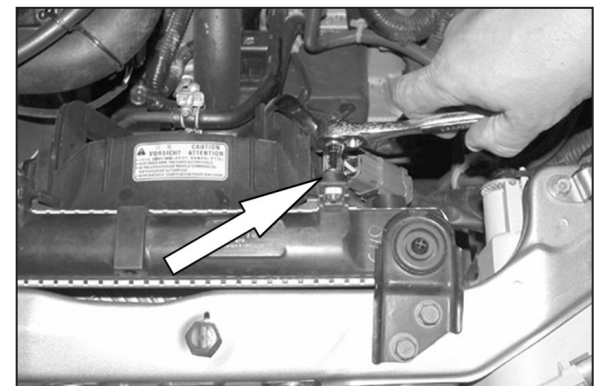
5. Loosen and remove the three bolts that secure the air cleaner base to the inner fender as shown.



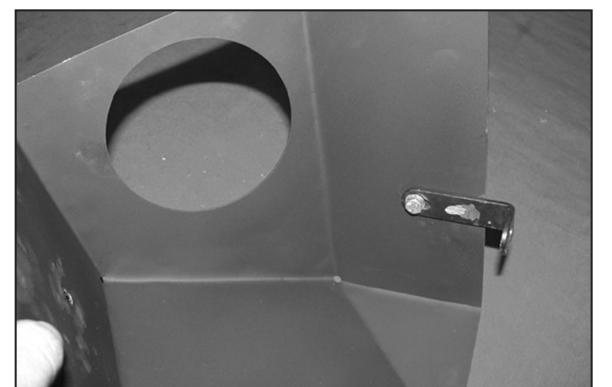
6. Using a flat blade screwdriver depress the tabs on the air inlet to release the air cleaner base, then remove the air cleaner base as shown.  
**NOTE: K&N Engineering, Inc., recommends that customers do not discard factory air intake.**



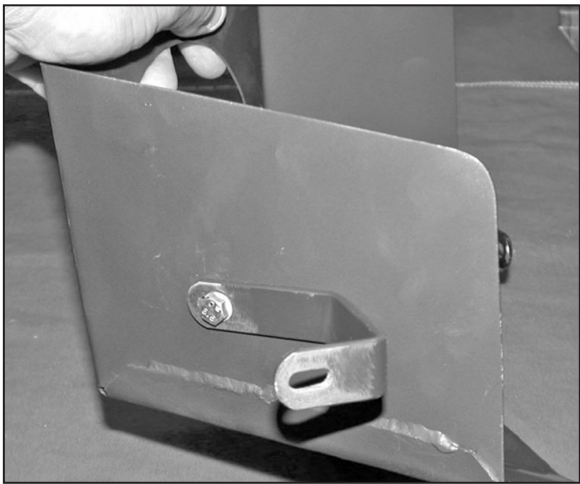
7. Loosen and remove the bolt that secures the wire harness bracket to the water neck as shown.



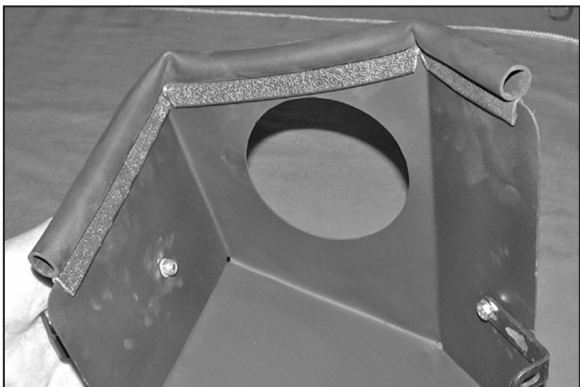
8. Loosen and remove the bolt that secures the electric fan to the radiator as shown.



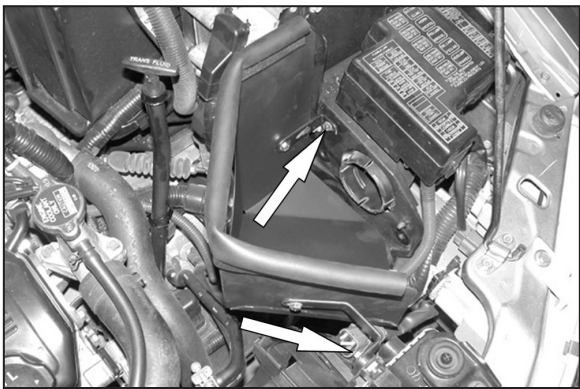
9. Secure the "L" bracket to the heat shield using the provided hardware as shown.



10. Secure the "J" bracket to the heat shield using the provided hardware as shown.



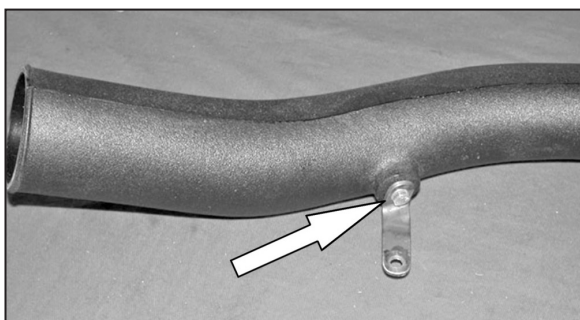
11. Apply the provided trim seal to the heat shield assembly as shown.



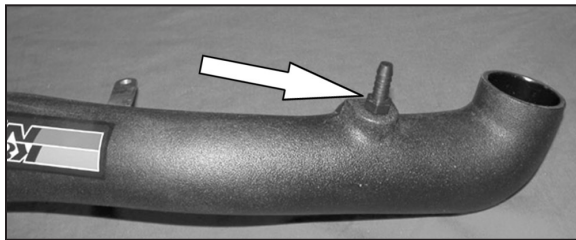
12. Install the heat shield assembly and line up the "L" bracket with the original air cleaner mounting point, then, line up the angled bracket with the mounting point on the electric fan and secure with the provide hardware.



13. Install the provided silicone hose and hose clamps onto the throttle body as shown.



14. Install the Angled "L" bracket onto the K&N® intake tube and secure with the provided hardware.



15. Install the provided vent into the threaded vent on the K&N® intake tube as shown.

**NOTE: Plastic NPT fittings are easy to cross thread. Install the vent fitting "hand" tight, then turn it two complete turns with a wrench.**

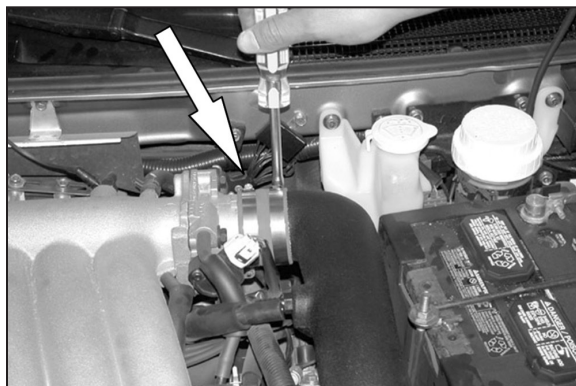


16. Install the K&N® intake tube into the hole on the heat shield, then slide the other end into the silicone hose at the throttle body.

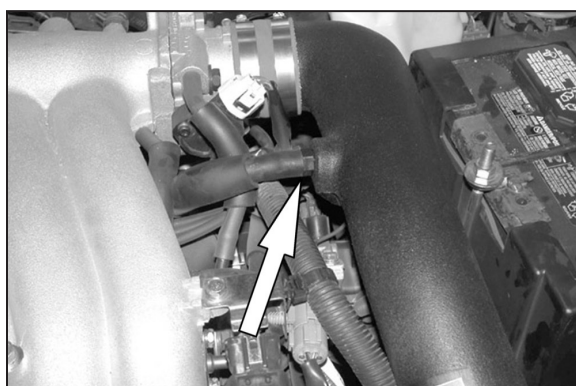
**NOTE: Do not tighten at this time**



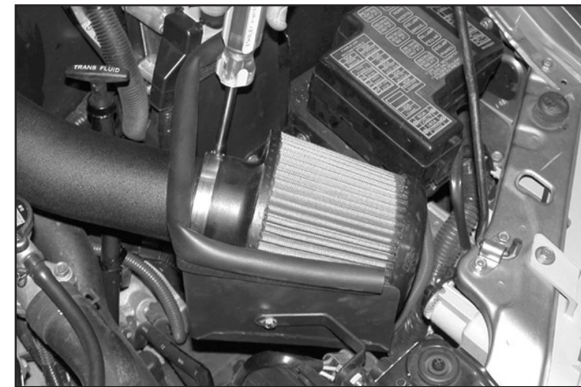
17. Using the bolt removed in step 7, secure the angled "L" bracket to the water neck as shown.



18. Tighten the hose clamp on the K&N® intake tube as shown.



19. Reconnect the crank case vent hose to the vent on the K&N® intake tube as shown.



20. Install the K&N® Filtercharger onto the K&N® intake tube and secure it with the provided hose clamp.

**NOTE: Drycharger® air filter wrap; part # RX-4990DK is available to purchase separately. To learn more about Drycharger® filter wraps or look up color availability please visit <http://www.knfilters.com>®.**



21. Reconnect the vehicle's negative battery cable. Double check to make sure everything is tight and properly positioned before starting the vehicle.

22. The C.A.R.B. exemption sticker, (attached), must be visible under the hood so that an emissions inspector can see it when the vehicle is required to be tested for emissions. California requires testing every two years, other states may vary.

23. It will be necessary for all K&N® high flow intake systems to be checked periodically for realignment, clearance and tightening of all connections. Failure to follow the above instructions or proper maintenance may void warranty.

#### ROAD TESTING:

1. Start the engine with the transmission in neutral or park, and the parking brake engaged. Listen for air leaks or odd noises. For air leaks secure hoses and connections. For odd noises, find cause and repair before proceeding. This kit will function identically to the factory system except for being louder and much more responsive.

2. Test drive the vehicle. Listen for odd noises or rattles and fix as necessary.

3. If road test is fine, you can now enjoy the added power and performance from your kit.

4. K&N Engineering, Inc., requires cleaning the intake system's air filter element every 100,000 miles. When used in dusty or off-road environments, our filters will require cleaning more often. We recommend that you visually inspect your filter once every 25,000 miles to determine if the screen is still visible. When the screen is no longer visible some place on the filter element, it is time to clean it. To clean and re-oil, purchase our filter Recharger® service kit, part number 99-5050 or 99-5000 and follow the easy instructions.

**INTAKE SYSTEMS FOR VEHICLES LISTED ARE 50 STATE LEGAL. SEE KNFILTERS.COM FOR CARB STATUS ON EACH PART FOR A SPECIFIC VEHICLE.**