



AIRCHARGER®

HIGH-FLOW INTAKE KITS

NOT LEGAL FOR SALE OR USE ON ANY POLLUTION CONTROLLED MOTOR VEHICLE IN CALIFORNIA OR STATES ADOPTING CALIFORNIA EMISSION PROCEDURES.
See knfilters.com for CARB status on each part for a specific vehicle

INSTALLATION INSTRUCTIONS

63-1570

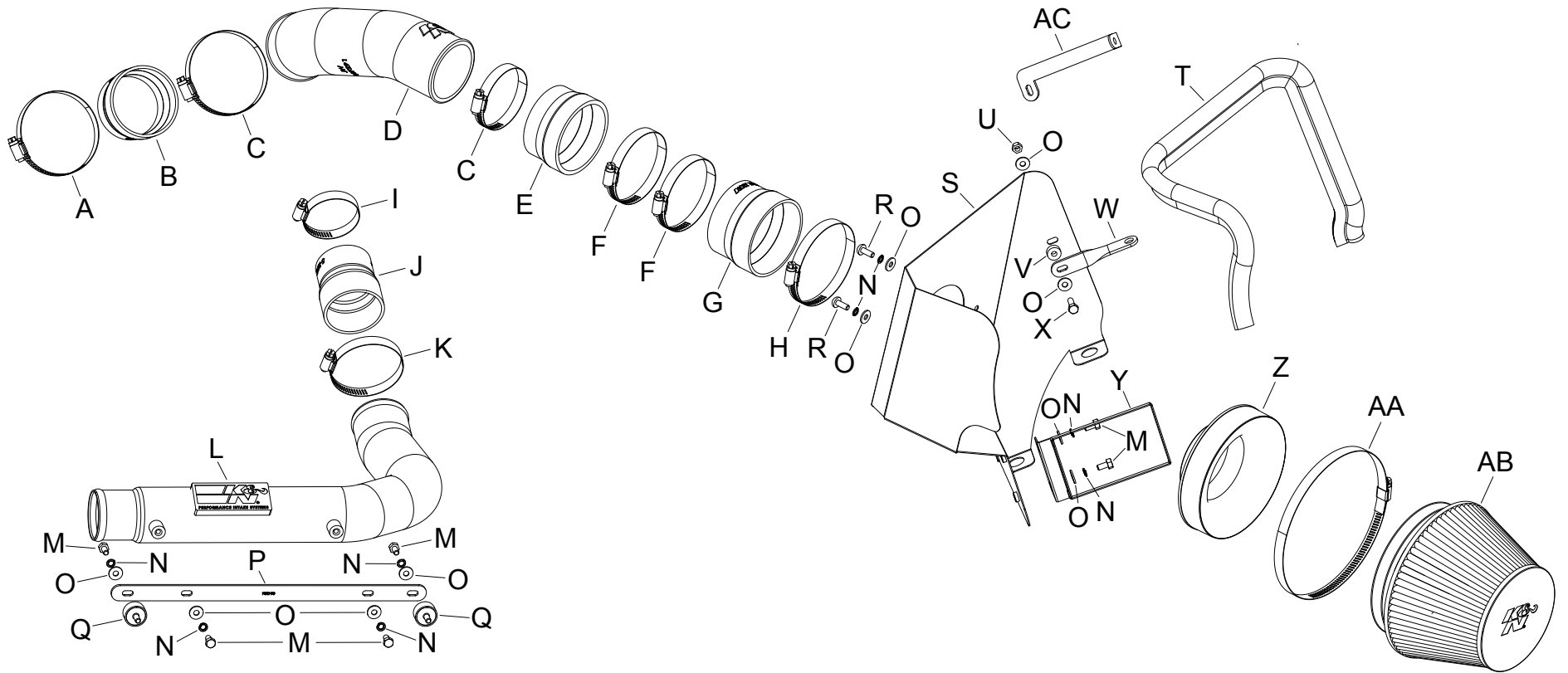
JEEP

2014-16 Grand Cherokee

V6-3.0L Turbo Diesel

TOOLS NEEDED:

- ratchet
- extension
- 13mm socket
- 10mm socket
- 4mm allen
- 13mm wrench
- 10mm wrench
- flat blade screw driver
- t25 torx



PARTS LIST:

Description	Qty.	Part #	Description	Qty.	Part #	Description	Qty.	Part #
A HOSE CLAMP #44 STAINLESS	1	08560	K HOSE CLAMP #40	1	08554	U NUT; 6MM NYLOCK, HEXHEAD	1	07512
B HOSE; 3" TO 2-3/4" ID X 2" L	1	084036	L TUBE; 2.5"OD TO 2.25"OD X 24"	1	27625	V SPACER: .625" OD X .250"ID	1	06555
C HOSE CLAMP #48	2	08601	M BOLT; M6 X 1.00 X 12MM, SS	6	07727	W BRACKET; 63-1015, SHORT	1	070702
D INTAKE TUBE (JW)	1	087291	N WASHER, M6 SPLIT LOCK ZINC	8	1-3025	X BOLT; M6 X 1.00" X 20MM HEX	1	07795
E HOSE; 3-1/4" TO 3" ID X 2" L	1	08186	O WASHER; 6MM FLAT, SS	10	08269	Y FRESH AIR DUCT MOUNT	1	073179
F HOSE CLAMP #52	2	08610	P BRACKET; STRT, 63-1570, STL	1	064324	Z ADAPTER; UNIVERSAL, 6"	1	21512-1
G HOSE; 3.5"ID TO 3.25"ID X 2.5"L	1	08496	Q STUD; RUBBER MNT, M/F, 1/2"L	2	070228	AA HOSE CLAMP #104	1	08697
H HOSE CLAMP #56	1	08620	R BOLT; M6 X 1.00 X 16MM, SS	2	07730	AB FILTER CHARGER	1	RC-2960
I HOSE CLAMP #32	1	08507	S HEAT SHIELD	1	073178	AC BRACKET	1	064343
J HOSE, ADAPTER 2.25/2.5" X3"	1	5-255	T EDGE TRIM (30")	1	102489			

If you need any assistance please call 1-800-858-3333 to speak with a representative in our Customer Service Center before returning the product.

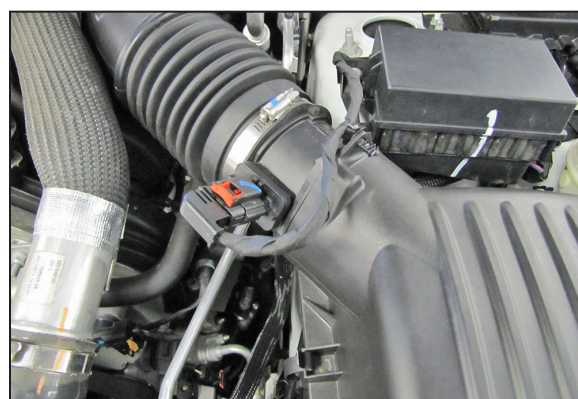
NOTE: FAILURE TO FOLLOW INSTALLATION INSTRUCTIONS AND NOT USING THE PROVIDED HARDWARE MAY DAMAGE THE INTAKE TUBE, THROTTLE BODY AND ENGINE.

TO START:

1. Turn off the ignition and disconnect the negative battery cable.
NOTE: Disconnecting the negative battery cable erases pre-programmed electronic memories. Write down all memory settings before disconnecting the negative battery cable. Some radios will require an anti-theft code to be entered after the battery is reconnected. The anti-theft code is typically supplied with your owner's manual. In the event your vehicles anti-theft code cannot be recovered, contact an authorized dealership to obtain your vehicles anti-theft code.



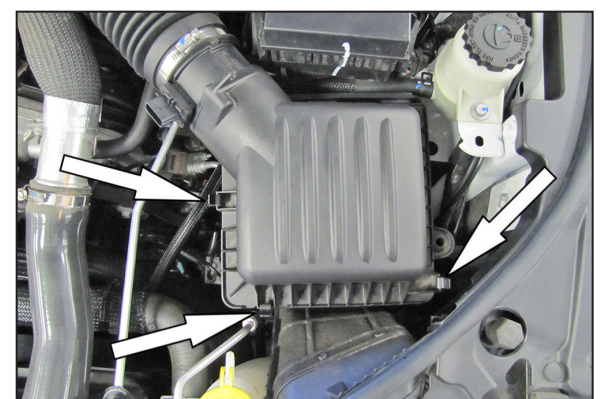
2. Lift up the decorative engine cover and remove it from the engine.



3. Disconnect the mass air sensor electrical connection.



4. Loosen the hose clamp securing the intake tube to the turbo inlet pipe.



5. Release the three clips securing the upper air filter housing.

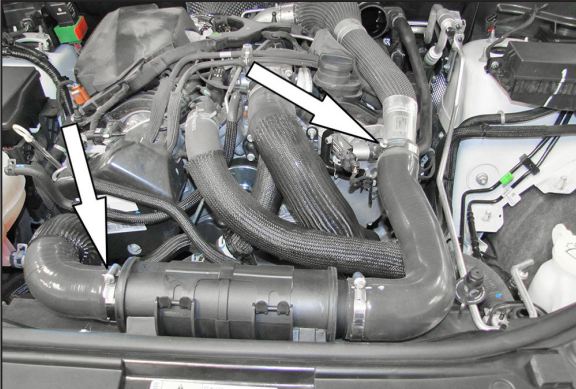


6. Unhook the edge trim from the fresh air intake scoop.



7. Lift up the lower air filter housing to dislodge it from the mounting grommets and then remove the housing from the vehicle.

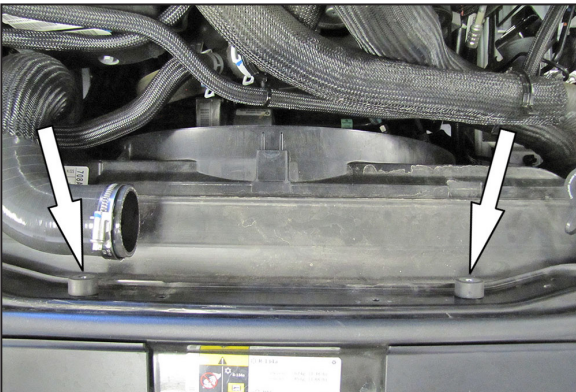
NOTE: K&N Engineering, Inc., recommends that customers do not discard factory air intake.



8. Loosen the inter cooler hose to pipe and hose to muffer chamber hose clamps,



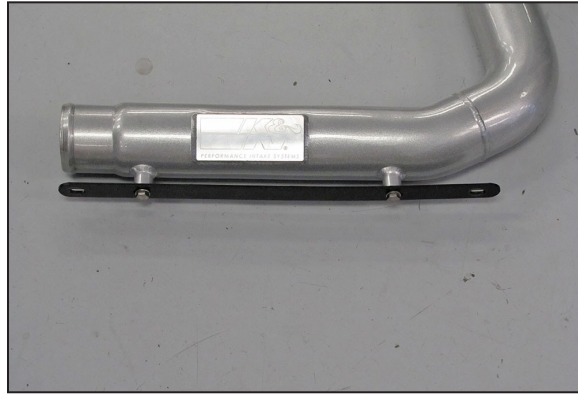
9. Loosen and remove the two bolts securing the intercooler muffer chamber to the core support then remove the muffer chamber and hose from the vehicle.



10. Install the two provided rubber mounted studs into the core support as shown. The studs will thread into the holes for the bolts which secure the muffer chamber.

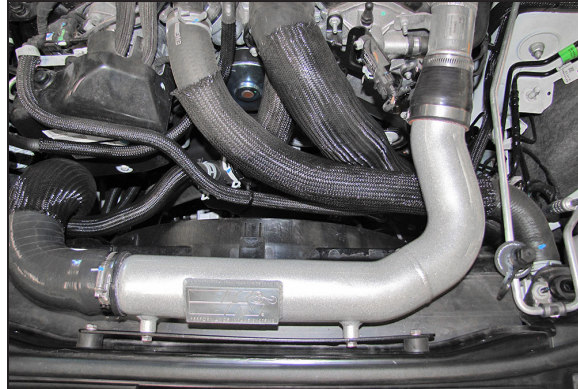


11. Install the provided step coupler (5-255) onto the K&N® intercooler pipe and secure with the provided hose clamp.

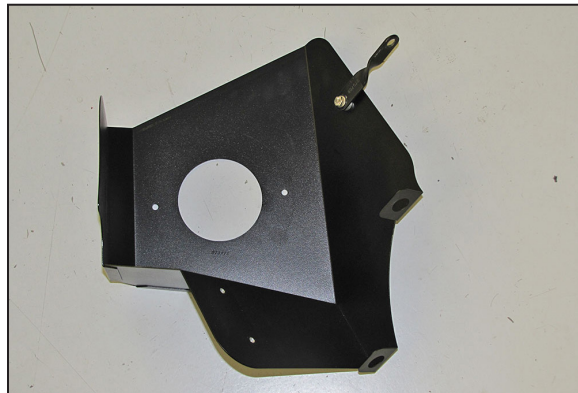


12. Install the provided bracket onto the K&N® intercooler pipe and secure with the provided hardware.

NOTE: Do not completely tighten the hardware at this time.

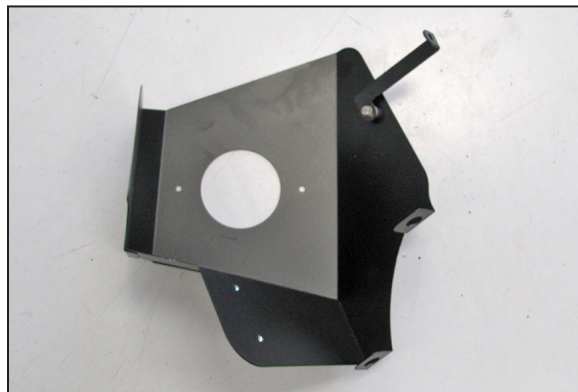


13. Install the intercooler pipe assembly and secure with the provided hose clamps and hardware, tighten the bracket mounting bolts at this time.



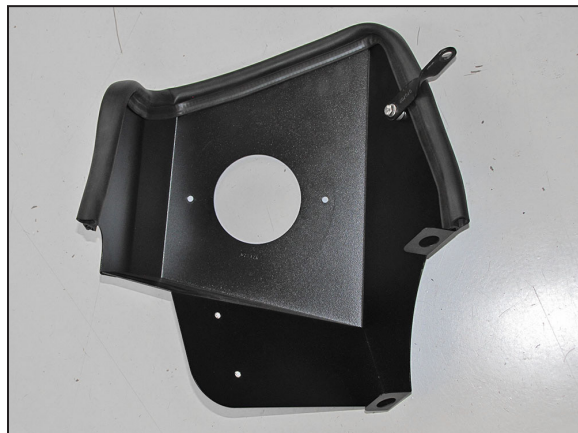
14a. On 2015 and earlier model vehicles, install bracket (070702) onto the heat shield as shown using the provided hardware and spacer.

NOTE: The spacer is to be placed between the bracket and heat shield.

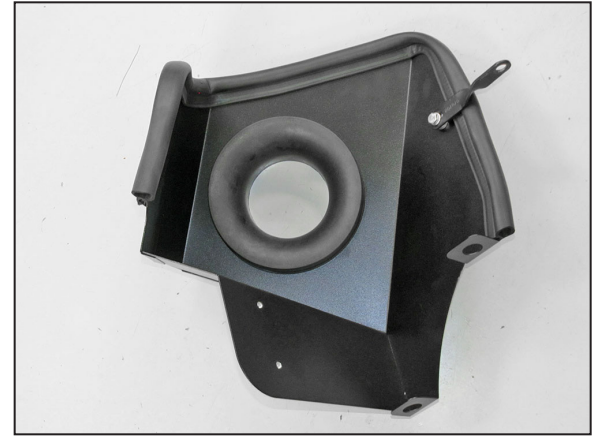


14b. On 2016 and later model vehicles, install bracket (064343) onto the heat shield as shown using the provided hardware and spacer.

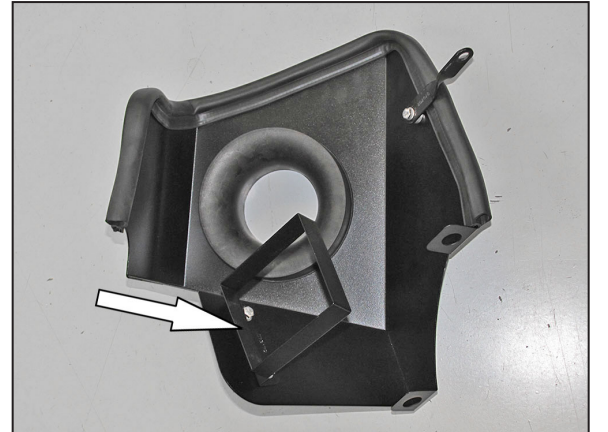
NOTE: The spacer is to be placed between the bracket and heat shield.



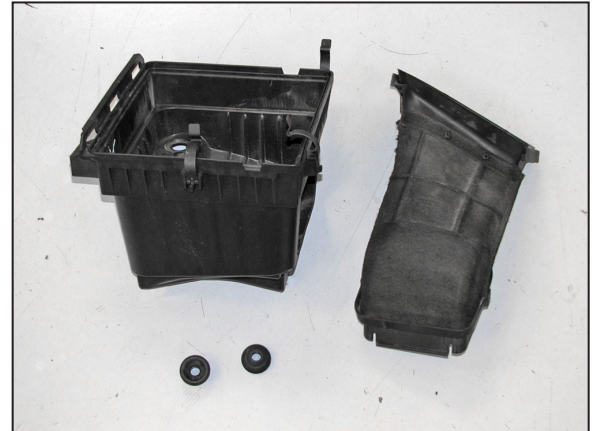
15. Install the provided edge trim onto the heat shield as shown.
NOTE: Some trimming of the edge trim will be necessary.



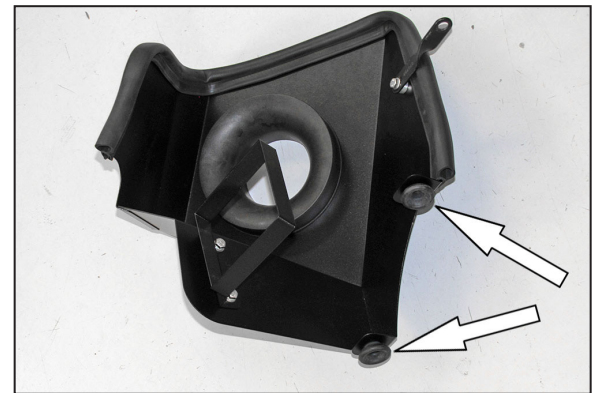
16. Install the filter adapter into the heat shield and secure with the provided hardware.



17. Install the fresh air intake scoop mounting bracket onto the heat shield and secure with the provided hardware.



18. Remove the fresh air intake scoop and two of the mounting grommets from the lower air filter housing.



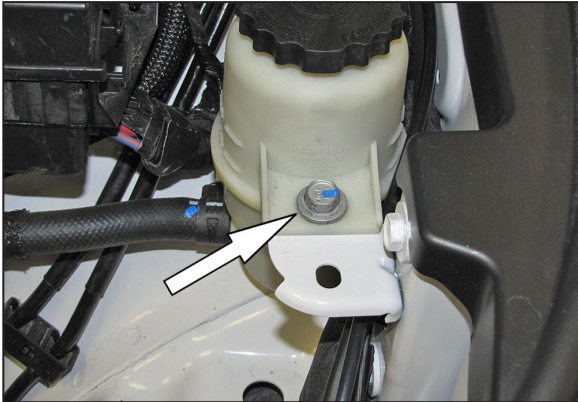
19. Install the air filter housing grommets into the heat shield as shown.



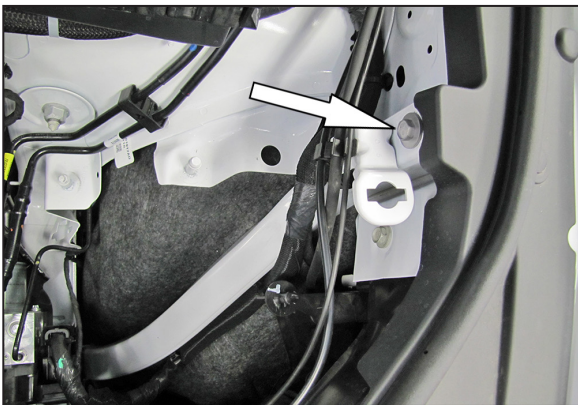
20. Install the K&N® air filter onto the filter adapter and secure with the provided hose clamp.
NOTE: Drycharger® air filter wrap; part # 22-8049DK is available to purchase separately. To learn more about Drycharger® filter wraps or look up color availability please visit <http://www.knfilters.com>®.



21. Install the fresh air intake scoop into the mounting bracket installed onto the heat shield assembly.



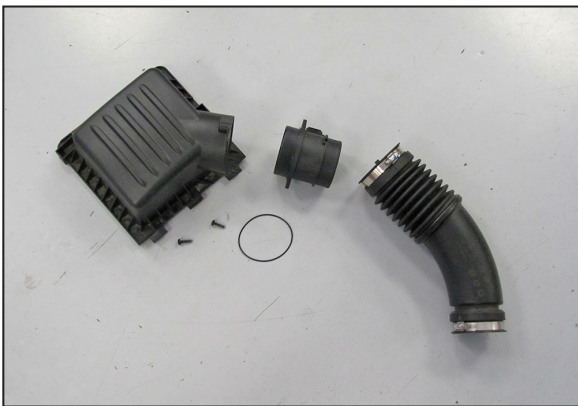
22a. On 2015 and earlier model vehicles, remove the P/S reservoir mounting bolt shown.
NOTE: This bolt will be reused in the next step.



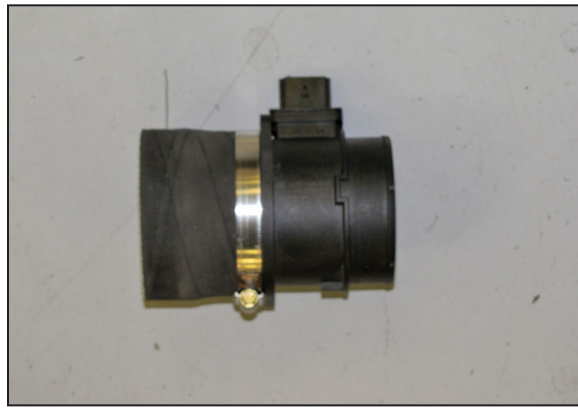
22b. On 2016 and later model vehicles, remove the fender mounting bolt shown.
NOTE: This bolt will be reused in the next step.



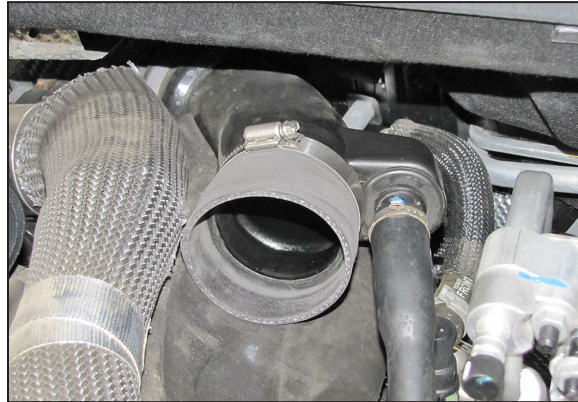
23. Install the heat shield assembly onto the air filter mounting studs and place the mounting bracket in position and secure with the factory bolt removed in step #22.



24. Remove the mass air sensor from the upper air filter housing and disconnect the intake tube.
NOTE: Remove the O-ring from the mass air sensor housing.



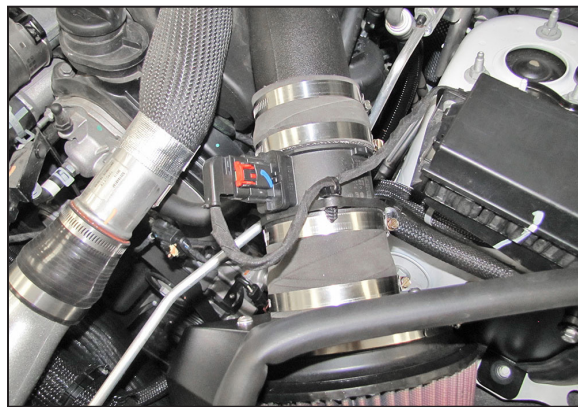
25. Install the provided coupling hose (08496) onto the air filter housing side of the mass air sensor and secure with the provided hose clamp.



26. Install the provided coupling hose (084036) onto the turbo inlet pipe and secure with the provided hose clamp.



27. Install the provided coupling hose (08186) onto the mass air sensor housing, and then install the K&N® intake tube into the hose. Install the tube and mass air sensor assembly onto the filter adapter and into the coupler at the turbo inlet. Adjust the mass air sensor and intake tube for best fit and then secure with the provided hose clamps.
NOTE: once everything is adjusted, secure all six of the hose clamps.



28. Reconnect the mass air sensor electrical connection and install the wiring harness retaining clip into the flange on the mass air sensor as shown.



29. Reinstall the decorative engine cover.



30. Reconnect the vehicle's negative battery cable. Double check to make sure everything is tight and properly positioned before starting the vehicle.

31. It will be necessary for all K&N® high flow intake systems to be checked periodically for realignment, clearance and tightening of all connections. Failure to follow the above instructions or proper maintenance may void warranty.

ROAD TESTING:

1. Start the engine with the transmission in neutral or park, and the parking brake engaged. Listen for air leaks or odd noises. For air leaks secure hoses and connections. For odd noises, find cause and repair before proceeding. This kit will function identically to the factory system except for being louder and much more responsive.

2. Test drive the vehicle. Listen for odd noises or rattles and fix as necessary.

3. If road test is fine, you can now enjoy the added power and performance from your kit.

4. K&N Engineering, Inc., requires cleaning the intake system's air filter element every 100,000 miles. When used in dusty or off-road environments, our filters will require cleaning more often. We recommend that you visually inspect your filter once every 25,000 miles to determine if the screen is still visible. When the screen is no longer visible some place on the filter element, it is time to clean it. To clean and re-oil, purchase our filter Recharger® service kit, part number 99-5050 or 99-5000 and follow the easy instructions.

NOT LEGAL FOR SALE OR USE ON ANY POLLUTION CONTROLLED MOTOR VEHICLE IN CALIFORNIA OR STATES ADOPTING CALIFORNIA EMISSION PROCEDURES.

See knfilters.com for CARB status on each part for a specific vehicle