



AIRCHARGER[®]

HIGH-FLOW INTAKE KITS

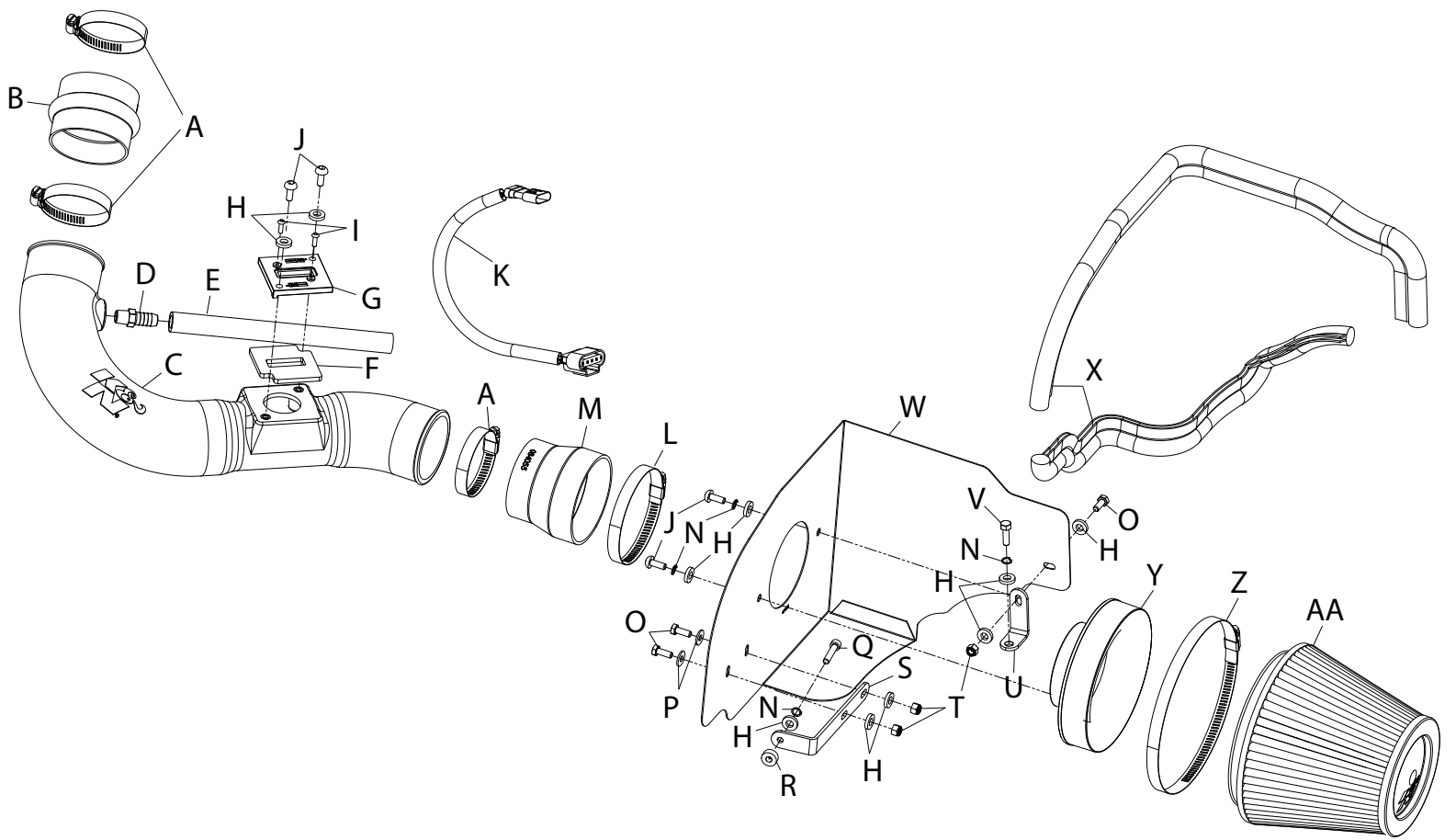
NOT LEGAL FOR SALE OR USE ON ANY POLLUTION CONTROLLED MOTOR VEHICLE IN CALIFORNIA OR STATES ADOPTING CALIFORNIA EMISSION PROCEDURES.
See knfilters.com for CARB status on each part for a specific vehicle

INSTALLATION INSTRUCTIONS

63-2577
FORD
2010 Mustang
V6-4.0L

TOOLS NEEDED:

- Ratchet
- Extension
- 10mm Socket
- T20 Torx
- Flat Blade Screwdriver
- 10mm Wrench
- 5mm Allen
- 4mm Allen
- 2.5mm Allen
- 5/8" Wrench.



PARTS LIST:

Description	Qty.	Part #	Description	Qty.	Part #	Description	Qty.	Part #
A Hose Clamp #44 Stainless	3	08560	J Bolt; M6 X 1.00 X 16MM , Bttnhd,	4	07730	S Bracket; "L", STL, TK/PC	1	083129
B Hose; 3" ID X 2-1/2" L Hump	1	087121	K MAF Extension Harness	1	21780	T Nut; 6MM Nylock, Hexhead, SS	3	07512
C Intake Tube	1	087237	L Hose Clamp #56	1	08620	U Bracket; L-Bend, FIN	1	070812
D Vent; Strt 1/2" Hose, 1/4"NPT	1	080022	M Hose; 3-1/2" TO 3"IDx3"L TPRD	1	084055	V Bolt; M6 X 1.00" X 20MM Hex, SS	1	07795
E Hose; 1/2"ID X 9"L	1	08401	N Washer; 1/4" Lock, ZN	4	08198	W Heat Shield	1	074055
F Gasket; 3/16 Poron	1	09069	O Bolt; 6MM-1.00 X 16MM, SS	3	07812	X Edge Trim (48")	1	102485
G Adaptor; #420, Nylon 6/6 GF	1	21515	P Washer; 6MM flat, SS	2	08269	Y Adapter; Coupler	1	21512-1
H Washer; 1/4"ID X 5/8"OD - SAE	10	08275	Q Bolt, M6-1 X 30MM	1	1-2020	Z Hose Clamp #104	1	08697
I Screw; M4- .7 X 12, Bttnhd SS	2	07726	R Spacer: .625"ODx.250"IDx.250"L	1	06555	AA Air Filter	1	RC-4381

NOTE: FAILURE TO FOLLOW INSTALLATION INSTRUCTIONS AND NOT USING THE PROVIDED HARDWARE MAY DAMAGE THE INTAKE TUBE, THROTTLE BODY AND ENGINE.

TO START:

1. Turn off the ignition and disconnect the negative battery cable.

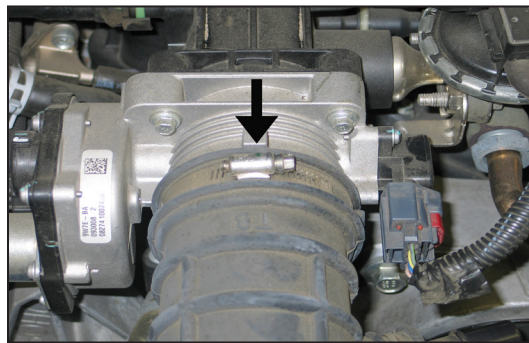
NOTE: Disconnecting the negative battery cable erases pre-programmed electronic memories. Write down all memory settings before disconnecting the negative battery cable. Some radios will require an anti-theft code to be entered after the battery is reconnected. The anti-theft code is typically supplied with your owner's manual. In the event your vehicles' anti-theft code cannot be recovered, contact an authorized dealership to obtain your vehicles anti-theft code.



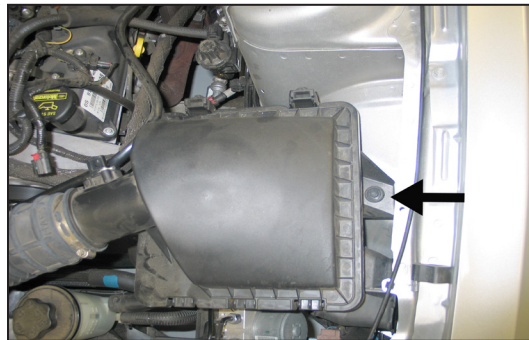
2. Release the red locking tab and then disconnect the mass air sensor electrical connection.



3. Release the locking ring and then disconnect the crank case vent tube.



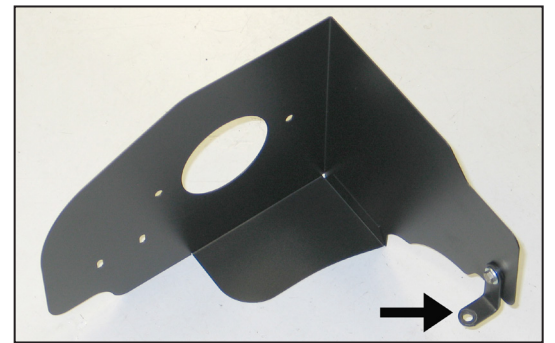
4. Loosen the hose clamp which secures the stock intake tube to the throttle body.



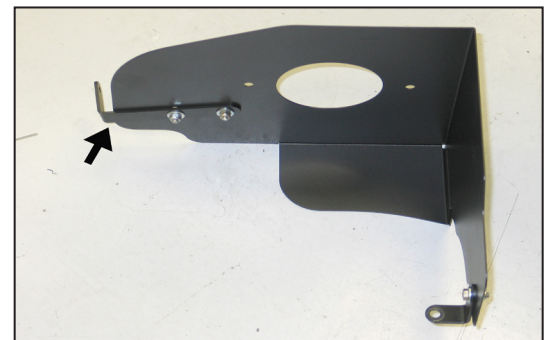
5. Remove the bolt which secures air box to the inner fender.



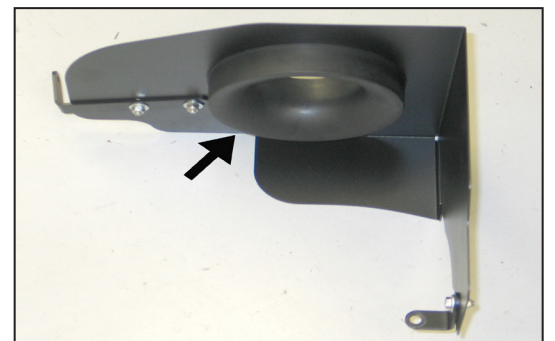
6. Remove the air box assembly from the vehicle.
NOTE: K&N Engineering, Inc., recommends that customers do not discard factory air intake.



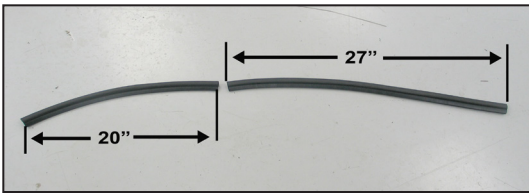
7. Install the small bracket (070812) onto the heat shield as shown and secure with the provided hardware.



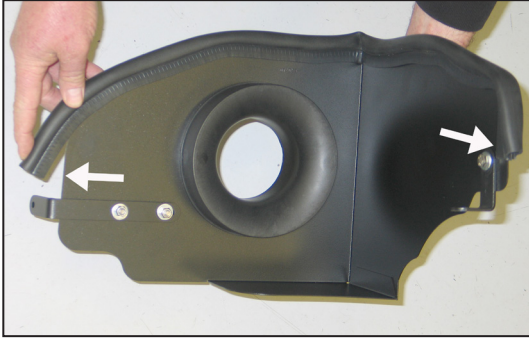
8. Install the large bracket (083129) onto the heat shield as shown and secure with the provided hardware.
NOTE: Do not completely tighten at this time.



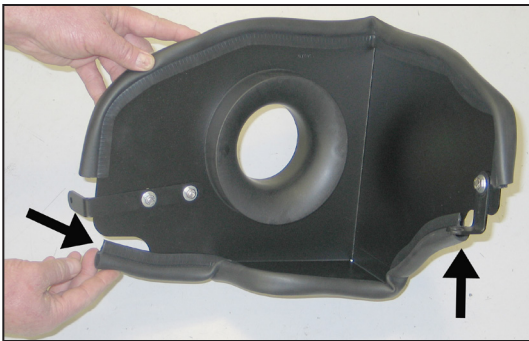
9. Secure the K&N® filter adapter to the heat shield as shown using the provided hardware.



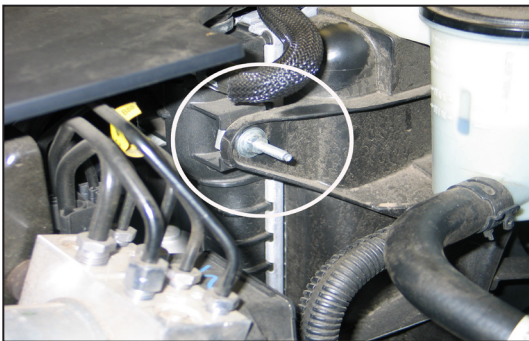
10. Cut the provided edge trim into two sections. The short section should be 20" long; the larger section should be 27" long.



11. Install the longer 27" section of edge trim onto the heat shield as shown.



12. Install the shorter 20" section of edge trim onto the heat shield as shown.



13. Remove the fan shroud mounting bolt shown.



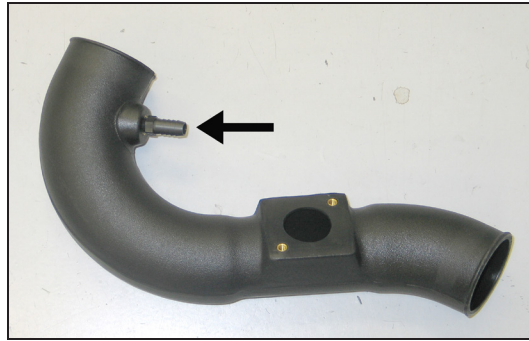
14. Set the heat shield into position on the inner fender and then secure to the inner fender and fan shroud with the hardware provided.



15. Install the provided hump hose (087121) onto the throttle body and secure with the provided hose clamp.

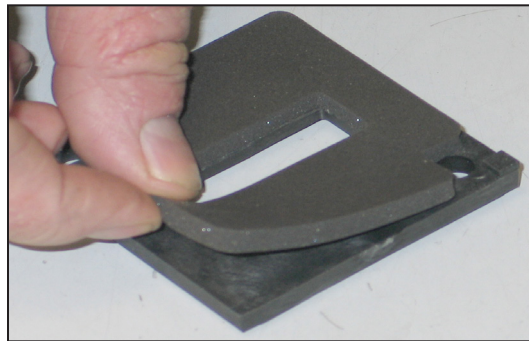


16. Install the provided step hose (084055) onto the filter adapter and secure with the provided hose clamp.

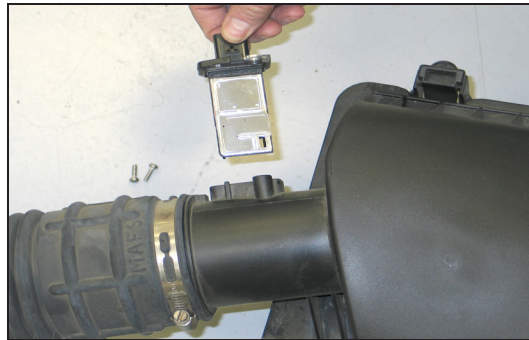


17. Install the provided 1/4npt fitting into the intake tube as shown.

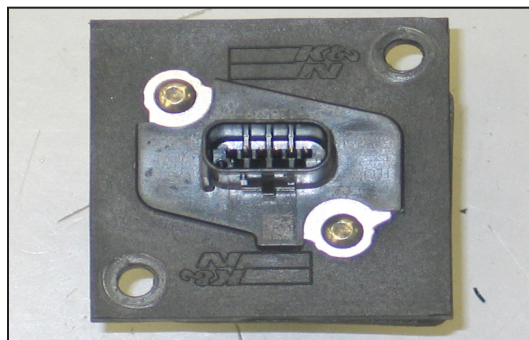
NOTE: Plastic NPT fittings are easy to cross thread. Install the vent fitting "hand" tight, then turn it two complete turns with a wrench.



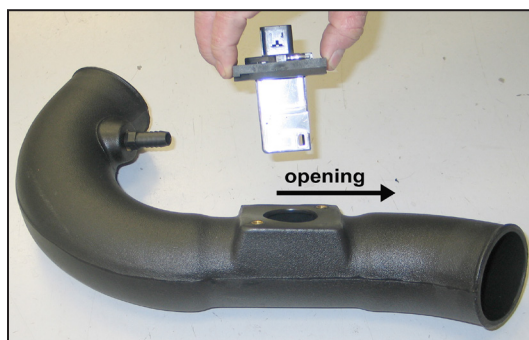
18. Install the provided gasket onto the mass air sensor adapter as shown.



19. Remove the two screws which secure the mass air sensor and then remove the mass air sensor from the stock air box.



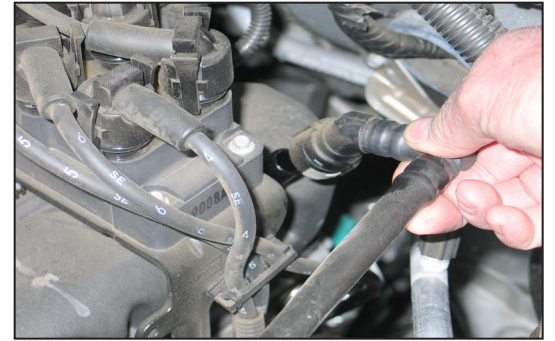
20. Install the mass air sensor into the mass air sensor adapter and secure with the provided hardware.



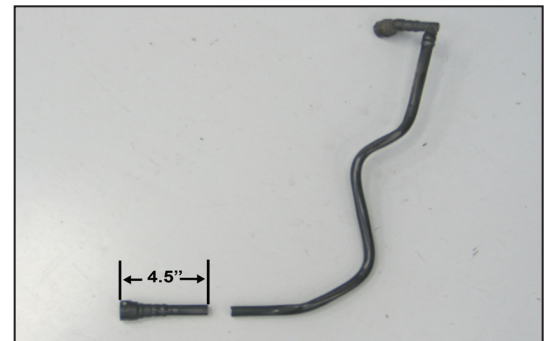
21. Install mass air sensor assembly into the intake tube and secure with the provided hardware.
NOTE: Be sure to install the sensor with the opening pointed towards the filter end of the intake tube.



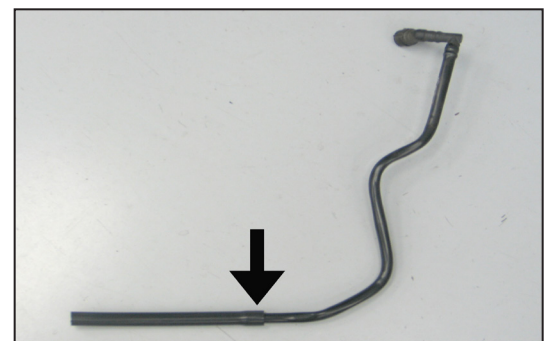
22. Install the intake tube into the silicone hose at the filter adapter and then into the hump hose at the throttle body and then secure with the provided hose clamps.



23. Remove the crank case vent tube assembly from the valve cover port.



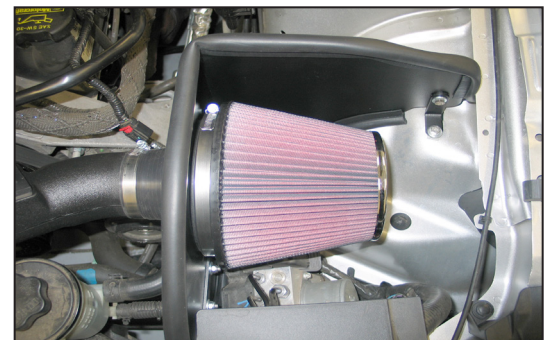
24. Cut the crank case vent tube as shown 4.5" from the end which attaches to the intake tube.



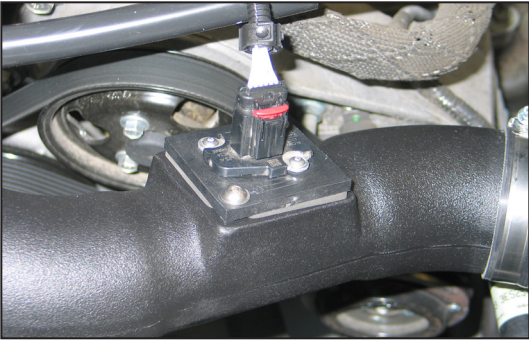
25. Install the 9" section of silicone hose provided onto the cut factory crank case vent tube as shown.



26. Reinstall the crank case vent hose assembly onto the valve cover and then connect the open end to the npt fitting installed into the intake tube.
NOTE: It will be necessary to trim the silicone vent hose.



27. Install the K&N® air filter and secure with the provided hose clamp.
NOTE: Drycharger® air filter wrap; part # RF-1036DK is available to purchase separately. To learn more about Drycharger® filter wraps or look up color availability please visit <http://www.knfilters.com>®.



28. Connect the provided mass air sensor extension harness into the factory harness and then connect the open end into the mass air sensor.



29. Reconnect the vehicle's negative battery cable. Double check to make sure everything is tight and properly positioned before starting the vehicle.

30. It will be necessary for all K&N® high flow intake systems to be checked periodically for realignment, clearance and tightening of all connections. Failure to follow the above instructions or proper maintenance may void warranty.

ROAD TESTING:

1. Start the engine with the transmission in neutral or park, and the parking brake engaged. Listen for air leaks or odd noises. For air leaks secure hoses and connections. For odd noises, find cause and repair before proceeding. This kit will function identically to the factory system except for being louder and much more responsive.

2. Test drive the vehicle. Listen for odd noises or rattles and fix as necessary.

3. If road test is fine, you can now enjoy the added power and performance from your kit.

4. K&N Engineering, Inc., requires cleaning the intake system's air filter element every 100,000 miles. When used in dusty or off-road environments, our filters will require cleaning more often. We recommend that you visually inspect your filter once every 25,000 miles to determine if the screen is still visible. When the screen is no longer visible some place on the filter element, it is time to clean it. To clean and re-oil, purchase our filter Recharger® service kit, part number 99-5050 or 99-5000 and follow the easy instructions.

NOT LEGAL FOR SALE OR USE ON ANY POLLUTION CONTROLLED MOTOR VEHICLE IN CALIFORNIA OR STATES ADOPTING CALIFORNIA EMISSION PROCEDURES.

See knfilters.com for CARB status on each part for a specific vehicle

* FREE K&N® decal To register your warranty, please see us online at knfilters.com/register. FREE K&N® decal *